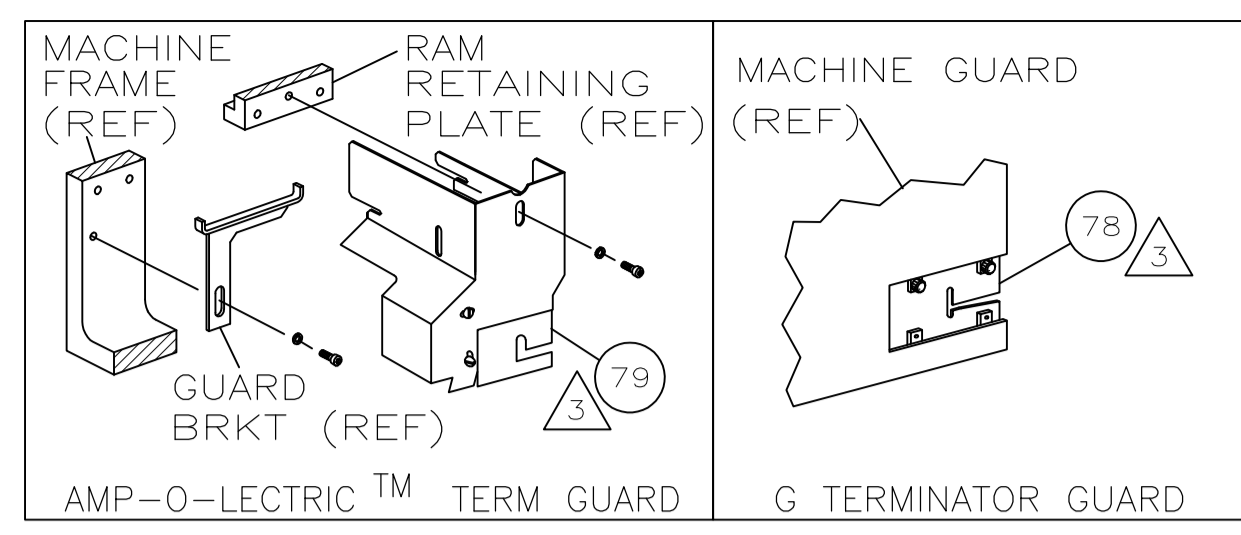
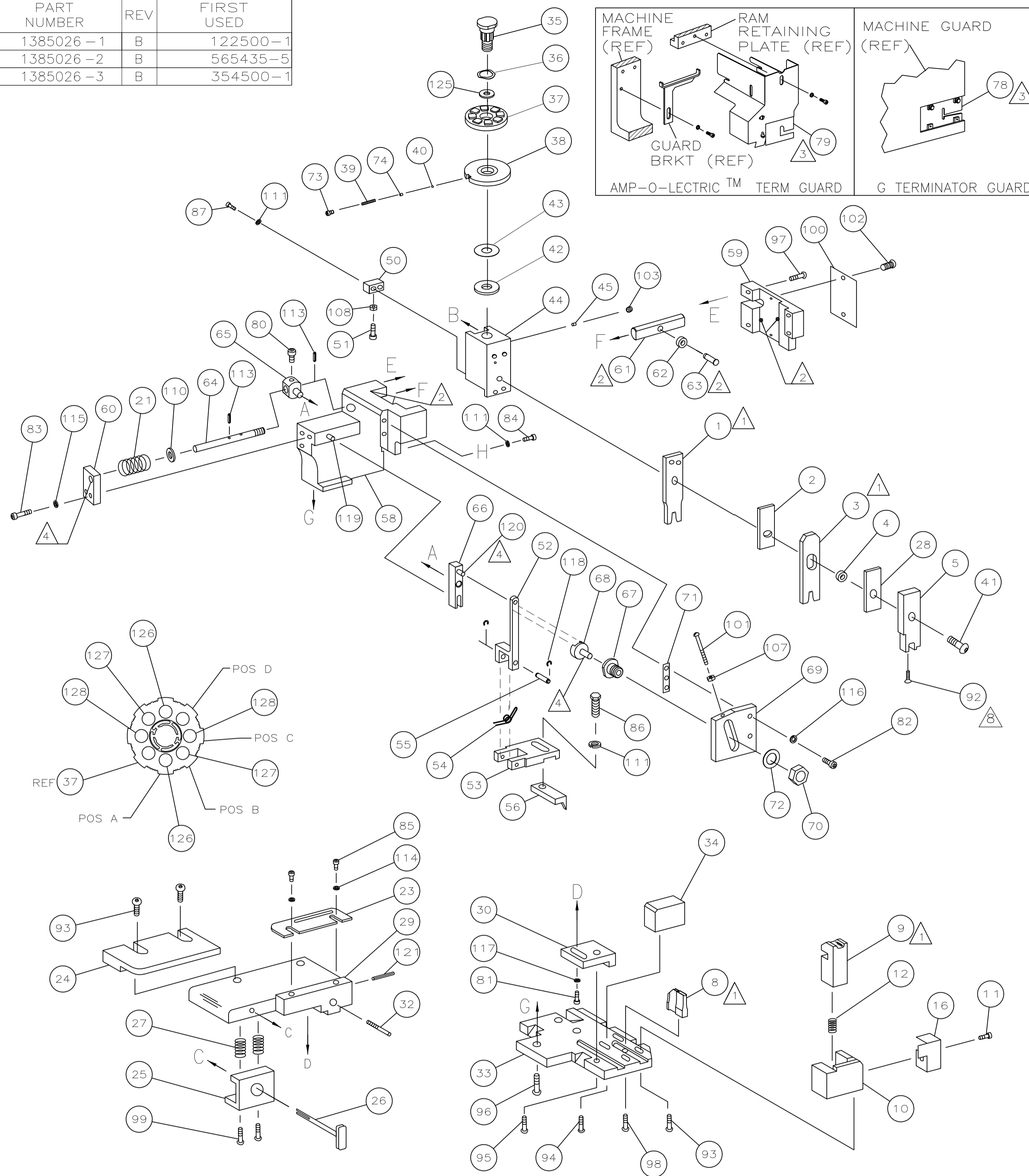
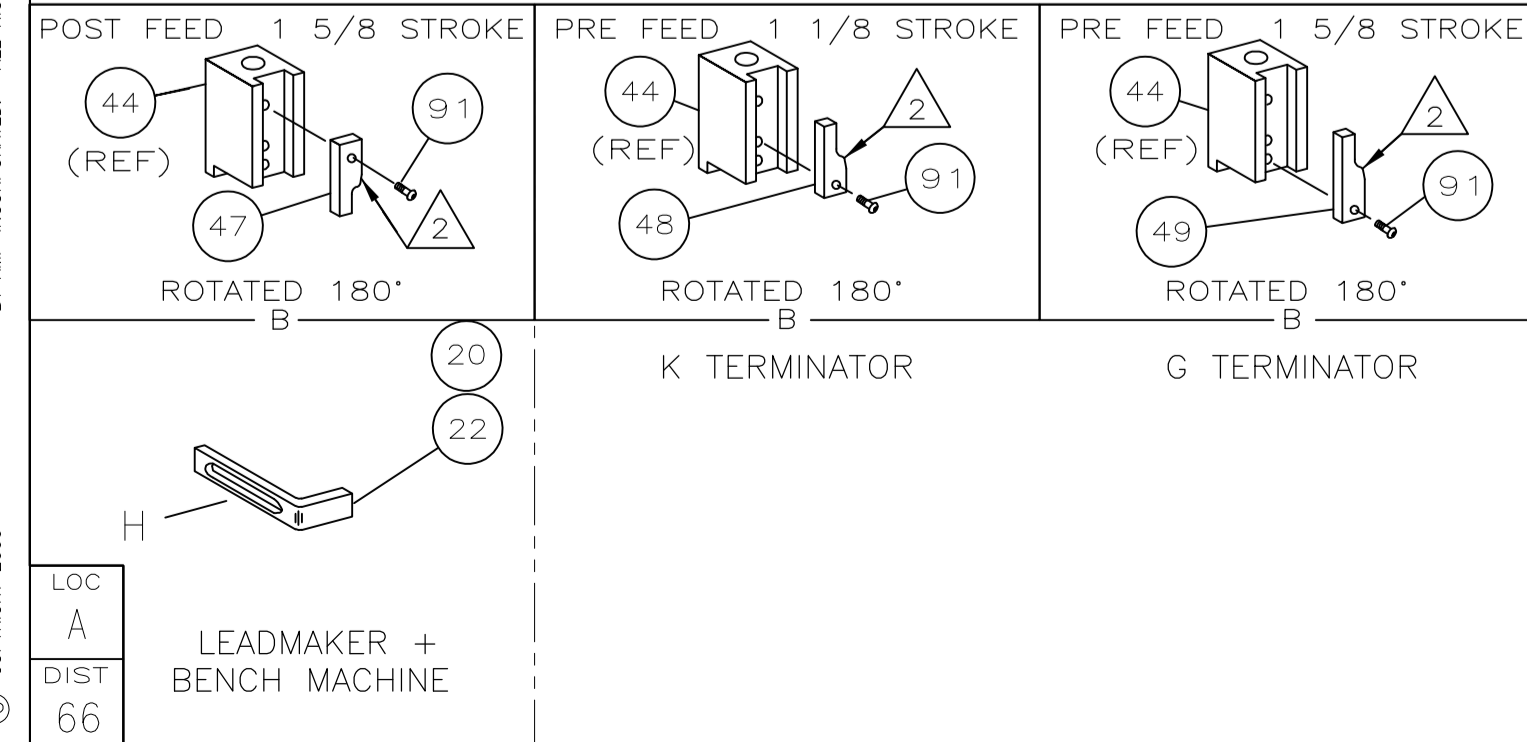


PART NUMBER	REV	FIRST USED
1385026 - 1	B	122500-1
1385026 - 2	B	565435-5
1385026 - 3	B	354500-1



TERMINAL NAME: MINI MIC RECEPTACLE CTC			
SEAL	TERMINAL	CRIMP DATA (AMP TERMINAL)	
963530	282438	PAD LTR	CRIMP HEIGHT
444049	444541	A	.059 ±.002 [1.50 ±0.05mm]
	353038	B	.054 ±.002 [1.37 ±0.05mm]
		C	.049 ±.002 [1.24 ±0.05mm]
		D	NOT USED
		CRIMP	SIZE
		WIRE	.070 [1.78mm]
		INSUL	.120 [3.05mm]
		FEED	.468
		WIRE STRIP LENGTH	.156-.188
		TERM APPL SPEC	NONE
		FEED	.468
		APPL INSTRUCTION	408-8040
		SET UP GAGE	458637-1
		LAYOUT	L2335

QTY	REQD	PER	ASSY	PARTS LIST	ITEM NO			
2	2	2	-	C	2-354779-4	PIN, WIRE DISC (.3110)C	129	
2	2	2	-	C	1-354779-4	PIN, WIRE DISC (.3060)B	127	
2	2	2	-	C	354779-2	PIN, WIRE DISC (.3000)A	126	
1	1	1	-	A	986950-1	WASHER, FLAT PRECISION	125	
1	1	1	-	A	217238-1	GENERAL INSTRUCTION PACKAGE	124	
1	1	1	-	-	4088040	SF APPL INST 408-8040	123	
1	1	1	-	-			122	
1	1	1	-	A	4-21028-0	PIN,SLT SPR(Ø.093x.75)ST GDE PL	121	
REF	REF	REF	-	A	1-21030-1	PIN,DOWEL(Ø.187x.50)LEVER	120	
REF	REF	REF	-	A	1-21030-6	PIN,DOWEL(Ø.187x1.25)HOUSING	119	
REF	REF	REF	-	A	21045-3	RING,RET "C"(Ø.187)FD FING PIN	118	
1	1	1	-	A	21024-5	WASHER, LOCK(#10)ADJ BLOCK	117	
REF	REF	REF	-	A	21024-5	WASHER,LOCK(#10)ADJ PLATE	116	
REF	REF	REF	-	A	21024-5	WASHER,LOCK(#10)FEED GDE ROD	115	
2	2	2	-	A	21024-2	WASHER,LOCK(#4)FRONT STP GUIDE	114	
REF	REF	REF	-	A	5-21028-1	PIN,SLT SPR(Ø.125x.50)ADJ ROD	113	
							112	
4	4	4	-	A	21024-4	WASHER,LOCK(#8)STRIPPER	111	
REF	REF	REF	-	A	21899-4	WASHER,FLAT(Ø5/16)SCREW ADJ	110	
							109	
1	1	1	-	A	21018-5	NUT,HEX(NO.6)HOLDDOWN	108	
REF	REF	REF	-	A	21068-5	NUT,HEX(6-32)FEED ADJ	107	
							106	
							105	
							104	
1	1	1	-	A	21009-2	SCR,SKT SET(1/4-20x.25 LW)RAM	103	
2	2	2	-	A	21017-2	SCR,DRIVE(#2x.19)ID PLATE	102	
REF	REF	REF	-	A	6-23715-5	SCR,PAN HD(6-32x1.50)FEED ADJ	101	
1	1	1	-	B	461264-1	PLATE, IDENTIFICATION	100	
2	2	2	-	A	5-21006-6	SCR,SET(10-32x.75)DRAG	99	
1	1	1	-	A	22733-8	SCR,BHC(8-32x.38 LW)ANVIL	98	
REF	REF	REF	-	A	2-21002-9	SCR,BHC(10-32x.75)CAP	97	
REF	REF	REF	-	A	2-22733-8	SCR,BHC(1/4-20x.62)HOUSING	96	
REF	REF	REF	-	A	2-21002-7	SCR,BHC(10-32x.50)SG ADJ BLOCK	95	
							94	
4	4	4	-	A	2-21002-2	SCR,BHC(8-32x.5)R STP GDE	93	
1	1	1	-	A	1-21003-9	SCR,FHC(6-32x.38)DEP	92	
1	1	1	-	A	1-21002-7	SCR,BHC(6-32x.38)CAM	91	
							90	
							89	
							88	
							87	
2	2	2	-	A	2-21000-7	SCR,SHC CAP (8-32)	86	
1	1	1	-	A	2-22603-0	SCR,HEX HD(8-32x.31)FEED FINGER	85	
2	2	2	-	A	1-21000-3	SCR,SHC(4-40x.25)F ST GUIDE	84	
1	1	1	-	A	2-21000-7	SCR,SHC(8-32x.50)STRIPPER	83	
REF	REF	REF	-	A	3-21000-7	SCR,SHC(10-32x.75)FEED ROD GD	82	
REF	REF	REF	-	A	3-21000-6	SCR,SHC(10-32x.62)FD ADJ BLK	81	
1	1	1	-	A	3-21000-4	SCR,SHC(10-32x.38)SG ADJ BL	80	
REF	REF	REF	-	A	3-21000-4	SCR,SHC(10-32x.38)PIVOT BLK	79	
-	REF	-	-	B	455749-1	GUARD, WINDOW	78	
REF	-	-	-	B	679532-1	INSERT, GUARD	77	
							76	
							75	
1	1	1	-	A	690603-1	SPRING, ASSIST	74	
1	1	1	-	A	23030-1	SCR,SHC(6-32x.25 SL)INS DISC	73	
REF	REF	REF	-	A	458109-1	WASHER, SPECIAL	72	
REF	REF	REF	-	A	690517-1	SPACER	71	
-3	-2	-1	U/M	DWG SIZE	PART NO	DESCRIPTION	ITEM NO	
QTY REQD PER ASSY				PARTS LIST				



- 1. RECOMMENDED SPARE PARTS.
- 2. GREASE LIGHTLY.
- 3. GUARD MUST BE IN PLACE WHEN OPERATING APPLICATOR IN A BENCH MACHINE.
- 4. LUBRICATE DAILY USING NO. 20 MACHINE OIL.
- 5. ITEMS WITH QTY OF REF SPECIFIED (EXCEPT ITEMS 78 AND 79) ARE USED ON ITEM 46.
- 6. CUT TO LENGTH AT ASSY
- 7. THIS APPLICATOR APPLIES TERMINAL WITH A SEAL
- 8. APPLY TORQ-SEAL IN ALLEN SOCKET TO FILL HOLE AFTER FLAT HD HAS BEEN ADJUSTED TO CORRECT HEIGHT AT QUALIFICATION. APPLY #1-23419-5 LOC-TITE TO THREADS.

QTY	REQD	PER	ASSY	U/M	DWG SIZE	PART NO	DESCRIPTION	ITEM NO	
1	1	1	-	A		690603-1	SPRING, ASSIST	74	
1	1	1	-	A		23030-1	SCR,SHC(6-32x.25 SL)INS DISC	73	
REF	REF	REF	-	A		458109-1	WASHER, SPECIAL	72	
REF	REF	REF	-	A		690517-1	SPACER	71	
-3	-2	-1	U/M	DWG SIZE	PART NO	DESCRIPTION	ITEM NO		
QTY REQD PER ASSY				PARTS LIST					

REV	REV	REV	REV	REV	REV	REV	REV	REV	REV	REV	REV	REV
-1	LEADMAKER											
-2	BENCH MODEL K											
-3	BENCH MODEL G											
REF	REF	REF	-	B	22594-8	NUT,HEX(1/2-20)	70					
REF	REF	REF	-	B	240628-1	PLATE, ADJUSTMENT	69					
REF	REF	REF	-	B	240626-1	SHAFT, PIVOT	68					
REF	REF	REF	-	B	240633-1	BUSHING	67					
REF	REF	REF	-	A	455680-1	LEVER, INTERMEDIATE	66					
REF	REF	REF	-	B	240629-1	BLOCK, PIVOT	65					
REF	REF	REF	-	A	240632-2	SCREW, ADJ FEED ROD	64					
REF	REF	REF	-	B	240659-3	PIN, CAM ROLLER	63					
REF	REF	REF	-	B	240658-1	ROLLER, CAM	62					
REF	REF	REF	-	B	454398-2	ROD, FEED	61					
REF	REF	REF	-	A	454178-1	GUIDE, FEED ROD	60					
REF	REF	REF	-	C	454220-1	CAP, RAM	59					
REF	REF	REF	-	D	454485-1	HOUSING	58					
							57					
							56					
1	1	1	-	B	458537-2	PAWL, FEED	56					
REF	REF	REF	-	B	240624-1	PIN, FEED FINGER	55					
REF	REF	REF	-	B	691499-1	SPRING, FEED FINGER	54					
REF	REF	REF	-	B	690541-1	HOLDER, FEED FINGER	53					
REF	REF	REF	-	A	455679-1	LEVER, TERMINAL FEED ARM	52					
REF	REF	REF	-	A	811242-2	BUMPER, HOLDDOWN	51					
1	1	1	-	A	690753-1	SPACER, TONKER	50					
1	-	-	-	B	690602-6	CAM, PRE-FEED 1 5/8 ST	49					
-	1	-	-	B	690602-5	CAM, PRE-FEED 1 1/8 ST	48					
-	-	1	-	B	690501-4	CAM, POST-FEED 1 5/8 ST	47					
1	1	1	-	B	459456-1	APPLICATOR, BASIC (SUBASSY)	46					
1	1	1	-	A	690191-1	PLUG, NYLON	45					
1	1	1	-	C	455673-1	RAM	44					
1	1	1	-	A	690125-1	WASHER, LAMINATED	43					
1	1	1	-	A	690124-1	WASHER, RAM	42					
1	1	1	-	A	7-21002-9	BOLT, CRIMPER(5/16x1.00)	41					
1	1	1	-	A	23241-6	BALL, STEEL	40					
1	1	1	-	A	690170-1	SPRING, COMPRESSION	39					
1	1	1	-	C	690142-1	DISC, INSULATION	38					
1	1	1	-	D	354777-1	WIRE DISC, PLASTIC	37					
1	1	1	-	A	22480-5	WASHER, SPRING	36					
1	1	1	-	B	690212-1	POST, RAM	35					
1	1	1	-	B	690786-1	SUPPORT, TERMINAL	34					
REF	REF	REF	-	D	455675-1	PLATE, BASE	33					
1	1	1	-	A	690432-3	SCREW, ADJUSTMENT	32					
							31					
REF	REF	REF	-	B	455689-1	BLOCK, STRIP GUIDE ADJ	30					
1	1	1	-	C	455671-1	PLATE, STRIP GUIDE	29					
1	1	1	-	C	455888-6	SPACER, FRONT SHEAR DEP	28					
2	2	2	-	A	1-22284-0	SPRING, DRAG	27					
1	1	1	-	B	690546-1	LEVER, DRAG RELEASE	26					
1	1	1	-	B	240792-1	DRAG, TERMINAL	25					
1	1	1	-	D	6-690504-2	GUIDE, STRIP (REAR)	24					
1	1	1	-	A	690438-1	GUIDE, STRIP (FRONT)	23					
-	-	1	-	B	690472-2	STRIPPER	22					
REF	REF	REF	-	A	4-22284-9	SPRING, FEED RETURN	21					
1	1	-	-	A	691353-1	STRIPPER WIRE STOP ASSY	20					
							19					
							18					
							17					
1	1	1	-	B	318563-1	GUARD, CHIP, FRONT	16					
							15					
							14					
							13					
1	1	1	-	A	3-22280-3	SPRING, SHEAR	12					
1	1	1	-	B	690461-2	STOP, SHEAR	11					
1	1	1	-	C	1-690459-0	HOLDER, SHEAR (FRONT)	10					
1	1	1	-	C	318707-1	SHEAR, FLOAT (FRONT)	9					
1	1	1	-	C	3-662185-5	ANVIL	8					
							7					
							6					
1	1	1	-	C	318701-1	DEPRESSOR, SHEAR (FRONT)	5					
1	1	1	-	B	2-238011-2	SPACER, BLOCK CRIMPER	4					
1	1	1	-	C	2-456135-4	CRIMPER, INSULATION	3					
1	1	1	-	C	1-455888-1	SPACER, CRIMPER	2					
1	1	1	-	C	456404-1	CRIMPER, WIRE	1					
-3	-2	-1	U/M	DWG SIZE	PART NO	DESCRIPTION	ITEM NO					
QTY REQD PER ASSY				PARTS LIST								

THIS DRAWING IS A CONTROLLED DOCUMENT.

17 FEB 2000
RELEASED FOR PUBLICATION
BY AMP INCORPORATED. ALL RIGHTS RESERVED.
COPYRIGHT 2000