

PART NUMBER	REV	FIRST USED	TERMINATOR	FEED TYPE	DESCRIPTION
1239049-1	B		BENCH & LEADMAKER	MECH POST FEED	HD-I APPLICATOR
7-1239049-1	B		BENCH & LEADMAKER	MECH POST FEED	-1 AND SPARE PARTS
7-1239049-7	A				SPARE PARTS KIT

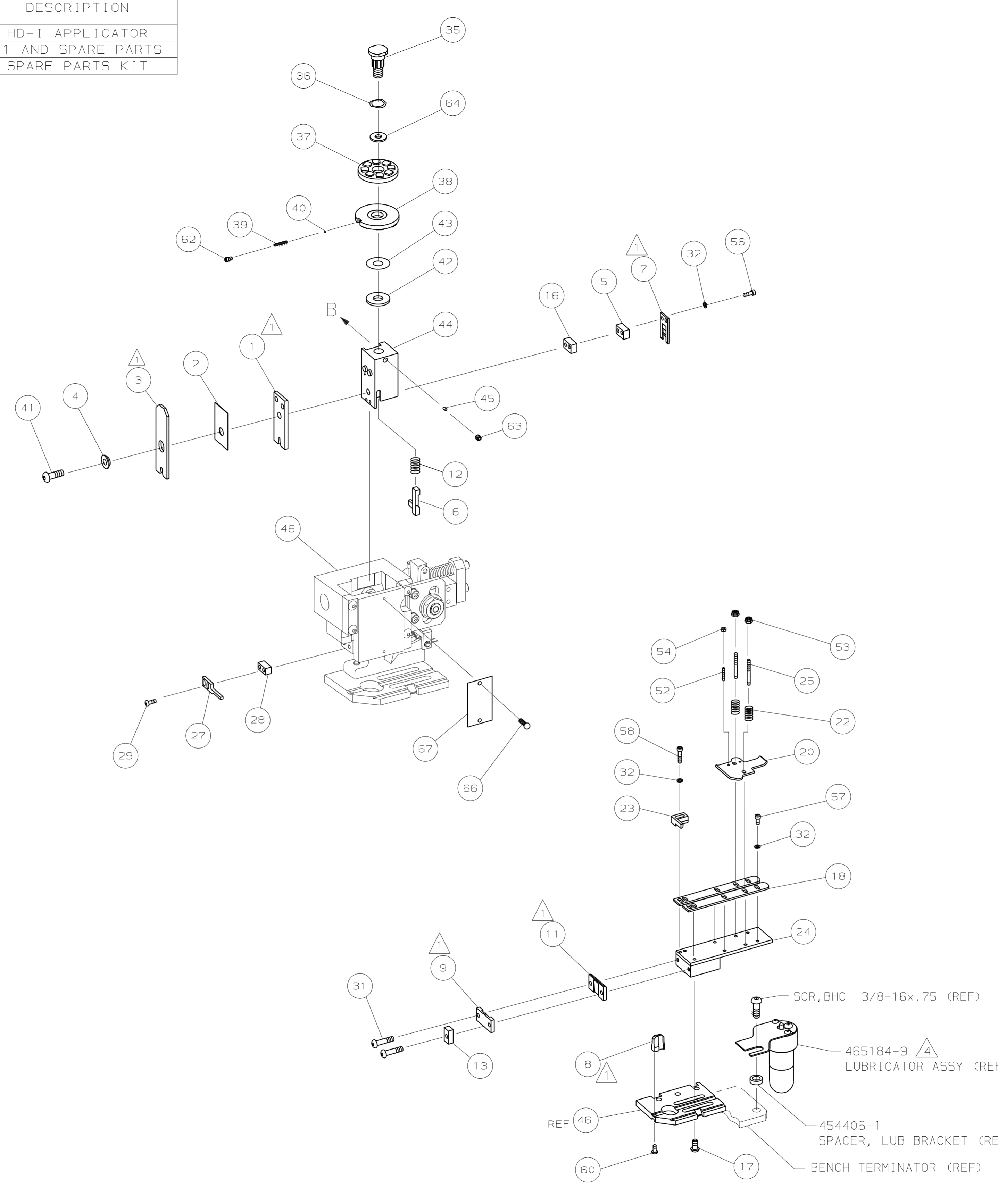
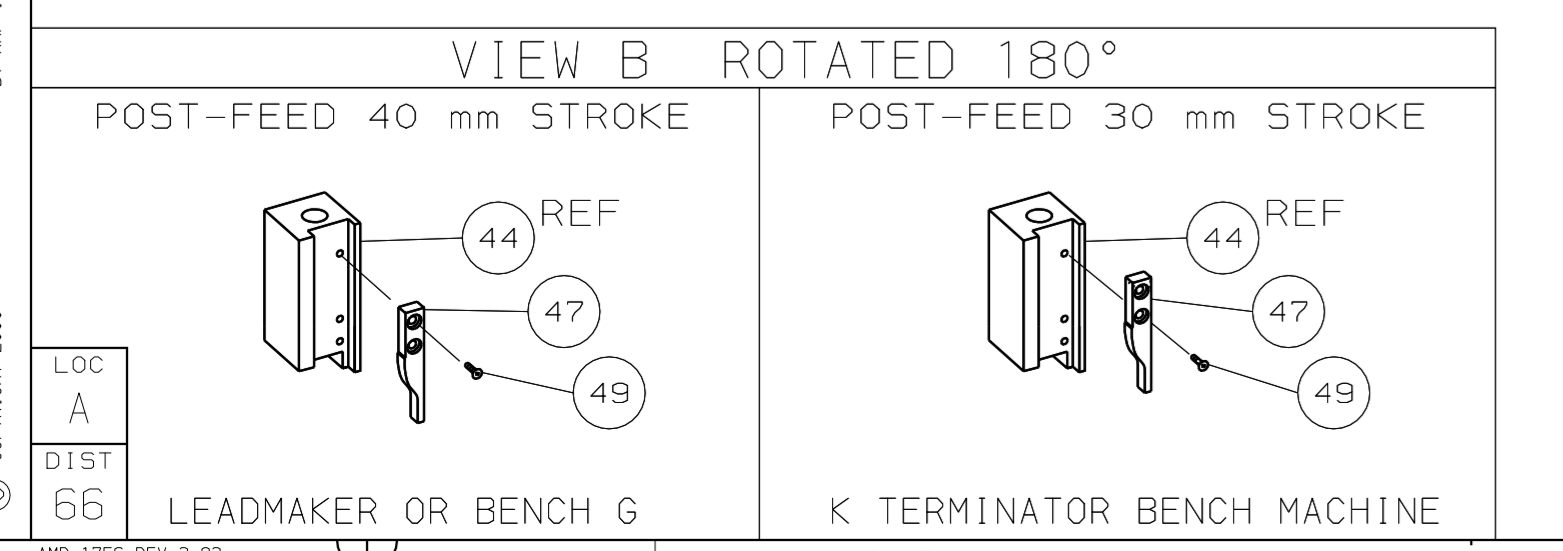
CRIMP DATA AMP TERMINAL AMP CRIMP SPECS			
TERMINAL NAME: FASTIN-FASTON CONNECTOR .250 SR REC CONTACT			
CRIMP	SIZE	TYPE	RANGE
WIRE	4.06 [1.160 IN]	F	(2) 1.5+1.5 (1)4 - (1)6
INSUL	4.32 [1.170 IN]	F	3.25-3.61 [1.128-.142 IN]
WIRE STRIP LENGTH	APPL INSTRUCTION		
3.25-3.61 [1.128-.142 IN]	408-8323		

TERMINAL	FEED
APPL SPEC 114-20021	21.44 [1.844 IN]

TERMINALS APPLIED				
180351	-	-	-	-
180560	-	-	-	-
-	-	-	-	-
-	-	-	-	-
-	-	-	-	-
-	-	-	-	-
-	-	-	-	-
-	-	-	-	-
-	-	-	-	-

WIRE SIZE	CRIMP HEIGHT	PIN PN & LENGTH [IN]
6mm ²	2.34 ±0.05 [0.092 ±0.002 IN]	5-354778-3 [1.2760]
5mm ²	2.16 ±0.05 [0.085 ±0.002 IN]	6-354778-8 [1.2835]
4.5mm ²	2.11 ±0.05 [0.083 ±0.002 IN]	7-354778-2 [1.2855]
4mm ²	1.96 ±0.05 [0.077 ±0.002 IN]	8-354778-6 [1.2925]
1.5mm ² + 1.5mm ²	1.83 ±0.05 [0.072 ±0.002 IN]	9-354778-6 [1.2975]

- RECOMMENDED SPARE PARTS.
- 2. GREASE RAM, CAM, CAM FOLLOWER AND FEED ROD LIGHTLY.
- 3. LUBRICATE DAILY PER THE APPLICATOR INSTRUCTION SHEET SUPPLIED WITH THE APPLICATOR.
- 4. CERTAIN TERMINALS REQUIRE LUBRICATION. REFER TO THE APPLICATOR INSTRUCTION SHEET FOR MORE INFORMATION.
- 5. INSULATION CRIMP WIDTH IS PER CUSTOMER REQUEST DO NOT REFER TO AMP SPEC. 114-20021



QTY	REQD	PER ASSY	PART NO	DESCRIPTION	ITEM NO
-	1	1	1239049	PRINT, APPLICATOR LOG SHEET	73
-	1	1	1338705-2	DOCUMENTATION PACKAGE	72
-	-	-	-	-	70
-	-	-	-	-	68
-	1	1	461264-1	PLATE, IDENTIFICATION	67
-	2	2	21017-2	SCR,DRIVE (#2X.19) ID PLATE	66
-	-	-	-	-	65
-	1	1	986950-1	WASHER, FLAT PRECISION	64
-	1	1	3-18031-0	SCR,SKT SET (M6X6) RAM	63
-	1	1	18023-9	SCR,SKT CAP (M4X6) CP DSC	62
-	-	-	-	-	61
-	1	1	18024-7	SCR,BHC (M4X10) ANVIL	60
-	-	-	-	-	59
-	2	2	1-18023-3	SCR,SHC (M4X.833)HOLD DOWN	58
-	5	5	1-18023-0	SCR,SHC (M4X.39)STRIP GUIDE	57
-	2	2	9-18023-6	SCR,SHC (M4X14)SLUG BLADE	56
-	-	-	-	-	55
-	2	2	18029-1	NUT, HEX (M3) DRAG	54
-	2	2	986965-1	NUT, HEX SL (M4) DRAG STUD	53
-	2	2	2-18032-2	SCR,SKT SET (M3X10) DRAG	52
-	-	-	-	-	51
-	-	-	-	-	50
-	1	1	18024-3	SCR,BHC (M3X10) CAM	49
-	-	-	-	-	48
-	1	1	1338676-1	CAM, POST-FEED 30 & 40 mm ST	47
-	1	1	1338662-2	APPLICATOR, BASIC (SUBASSY)	46
-	1	1	690191-1	PLUG, NYLON	45
-	1	1	1320998-1	RAM	44
-	1	1	690125-1	WASHER, LAMINATED	43
-	1	1	690124-1	WASHER, RAM	42
-	1	1	2-18024-6	SCREW,BHC (M8X25) CRIMPER	41
-	1	1	23241-1	BALL, STEEL	40
-	1	1	2-22278-7	SPRING, COMPRESSION	39
-	1	1	1320922-1	DISC, INSULATION	38
-	1	1	354777-1	WIRE DISC, PLASTIC	37
-	1	1	22480-5	WASHER, SPRING	36
-	1	1	690212-1	POST, RAM	35
-	-	-	-	-	34
-	-	-	-	-	33
-	9	9	18025-2	WASHER, LOCK (M4) SHEAR BL	32
-	2	2	1-18024-0	SCR,BHC (M4X20) SHEAR PL	31
-	-	-	-	-	30
-	2	2	18024-8	SCR,BHC (M4X12) STRIPPER	29
-	1	1	3-690451-2	SPACER, STRIPPER	28
-	1	1	690455-7	STRIPPER	27
-	-	-	-	-	26
-	2	2	1320906-1	DRAG, STUD	25
-	1	1	1-1320995-1	STRIP GUIDE	24
-	1	1	240825-8	PLATE, STRIP HOLD DOWN	23
-	2	2	3-22281-8	SPRING, DRAG	22
-	-	-	-	-	21
-	1	1	1338665-1	DRAG, STOCK	20
-	-	-	-	-	19
-	2	2	1338663-6	GUIDE, LOWER STRIP	18
-	4	4	1-18024-8	SCR,BHC (M6X12) STRIP GD PL	17
-	1	1	1338708-1	SPACER, SLUG BLADE	16
-	-	-	-	-	15
-	-	-	-	-	14
-	1	1	690481-2	SPACER, HOLD DOWN	13
-	1	1	23846-1	SPRING, HOLD DOWN	12
-	1	1	240833-3	PLATE, REAR SHEAR	11
-	-	-	-	-	10
-	1	1	690482-3	PLATE, FRONT SHEAR	9
-	1	2	1338700-1	ANVIL	8
-	1	1	690474-3	BLADE, SLUG	7
-	1	1	2-455892-7	HOLD DOWN, TERMINAL	6
-	1	1	5-240641-0	SPACER, SLUG BLADE	5
-	1	1	238009-1	SPACER, BLOCK CRIMPER	4
-	1	2	3-1213077-3	CRIMPER, INSULATION	3
-	1	1	455888-9	SPACER, CRIMPER	2
-	1	2	456427-2	CRIMPER, WIRE	1
-	-	-	-	-	-
-	-	-	-	-	-

DIMENSIONS: mm [INCHES]		MATL	HT TR	FIN
DO NOT SCALE PRINT.				
TOLERANCES UNLESS OTHERWISE SPECIFIED:				
1	PLC DEC ±			
2	PLC DEC ±			
3	PLC DEC ±			
ANGLES ±				
SURF TEXTURE: ✓				
REMOVE BURRS, BREAK SHARP EDGES RO.38 MAX				
SCALE		DWG NO		REV
-		1239049		B

THIS DRAWING IS A CONTROLLED DOCUMENT.

LAYOUT L2486
SET UP GAGE 458638-3

2000
RELEASED FOR PUBLICATION
BY AMP INCORPORATED. ALL RIGHTS RESERVED.
THIS DRAWING IS UNPUBLISHED.
COPYRIGHT 2000