

WIRE COMBINATIONS FOR NYLON-INSUALTED CLOSED END CONNECTORS

(D1)  
 MOLEX P/N: 191600012 (NC-2214), 191600130 (NC-2214BULK)  
 191600070 (NC-2214T), 191600091 (NC-2214BT)  
 (D1) (D1)

WIRE PREPARATION

NOTE: PRE-TWISTING NOT REQD FOR OEM APPLICATIONS  
 SOLID: (OEM ONLY)  
 A. STRIP LEADS TO .38(9.5)  
 B. INSERT INTO CONNECTOR & CRIMP  
 STRANDED:  
 A. STRIP LEADS TO APROX. .75(19.1)  
 B. TWIST WIRE COMBINATION EVENLY & TIGHT.  
 C. TRIM STRIPPED PRE-TWISTED ZONE TO .38(9.5).  
 D. INSERT INTO CONNECTOR AND CRIMP.

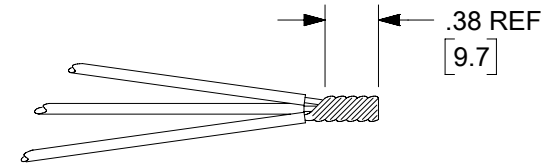
UL LISTED WIRE COMBINATIONS

STRANDED WIRE ONLY

16 AWG	18 AWG	20 AWG	22 AWG
			7
		1	6
	1		5
		2	4
	1		4
		2	3
1			3
		3	2
1			2
		4	1
	2		1
1			1
		4	
	1	3	
1		2	
	2	1	
1		1	
	3		

STRANDED WIRE ONLY

16 AWG	18 AWG	20 AWG	22 AWG
	2		
1	1		
1	1	1	
	1	2	
	2		2
	1		3
	1		1
	1	1	1
	1	2	1
	1	1	2
	1	1	3
		3	1
		2	2
		1	4
		1	5
			6
1	1	1	1



RATING 105°C 300 VOLT  
 FILE: E32244



RATING 125°C 300 VOLT  
 FILE: LR 18689

APPLICATION WITH HANDTOOL:

HOLD TOOL WITH LOCATOR PLATE FACING UP.  
 INSERT CLOSED END CONNECTOR IN HOLE.  
 INSURE THAT SHOULDER OF CONNECTOR IS RESTING ON LOCATOR PLATE.  
 CLOSE TOOL JAWS UNTIL CONNECTOR IS HELD SNUG IN PLACE.  
 LOAD CONNECTOR WITH DESIRED WIRE COMBINATION.  
 COMPLETE CRIMP BY CLOSING TOOL HANDLES UNTIL THEY RELEASE.

CRIMP TOOLING AVAILABLE

640010600 (RHT-7000) HANDTOOL  
 640053400 (AT-2214) CRIMP HEAD OR 640050600 (AT-7000) CRIMP HEAD  
 FOR 192790001 (AT-200) AIR HAND TOOL

(D1)

192280030 (ATP-301) AIR TAPE PRESS OR  
 638853500 MINI-MAC TAPE APPLICATOR WITH  
 192880242 (ATP-NC-2214) CRIMPING DIES

ADDITIONAL UL LISTED WIRE COMBINATIONS

- (3) 18 AWG SOLID
- (2) 18 AWG SOLID

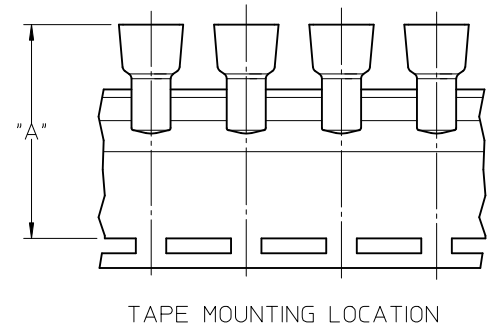
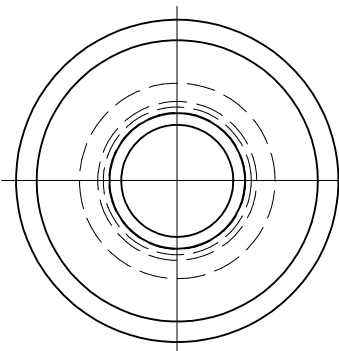
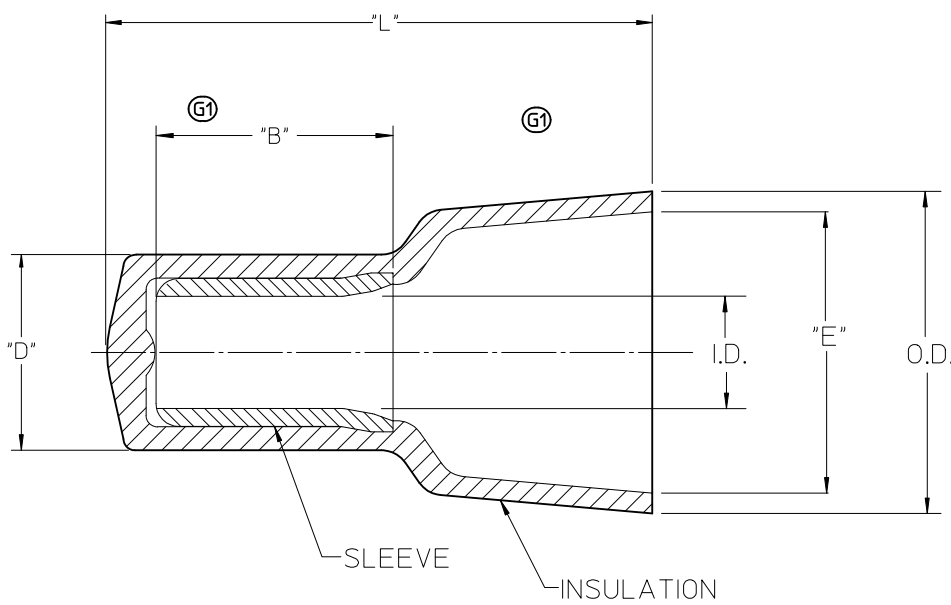
CSA CERTIFIED WIRE COMBINATIONS

- (7) 22 AWG STRANDED
- (4) 22 AWG STRANDED WITH (2) 20 AWG STRANDED
- (2) 20 AWG STRANDED WITH (1) 16 AWG STRANDED
- (2) 18 AWG STRANDED WITH (1) 20 AWG STRANDED
- (3) 18 AWG STRANDED
- (2) 18 AWG SOLID

NOTE: THIS DOCUMENT USED TO MAKE STUFFER SHEET  
 PART NO: 194080109  
 DOC NO'S: E-19160-009 & PK-19408-109

FUNCTIONAL SYMBOLS	THIS DRAWING CONTAINS INFORMATION THAT IS PROPRIETARY TO MOLEX ELECTRONIC TECHNOLOGIES, LLC AND SHOULD NOT BE USED WITHOUT WRITTEN PERMISSION									
	DIMENSION UNITS		SCALE		CURRENT REV DESC: P/N TYPO/ ERROR: 191600070 WAS 191600071, 191600130 WAS 190600129, 191600091 WAS 191600190. CRIMP TOOLING P/N'S UPDATED.					
	INCH/MM		NTS							
	GENERAL TOLERANCES (UNLESS SPECIFIED)									
DIVISIONAL SYMBOLS	4 PLACES ±		MM		INCH		EC NO: 704038		2022/04/07	
	3 PLACES ±						DRWN: DMYRICK		2022/05/04	
	2 PLACES ±						CHKD: JMACNEIL		2022/05/04	
	1 PLACE ±						APPR: JMACNEIL		2022/05/04	
0 PLACES ±						INITIAL REVISION:		1999/11/03		
ANGULAR TOL ± °						DRWN: JHACKNEY		2012/06/06		
APPR: JMACNEIL						THIRD ANGLE PROJECTION		DRAWING		
DRAFT WHERE APPLICABLE MUST REMAIN WITHIN DIMENSIONS						SERIES		MATERIAL NUMBER		
						B-SIZE		19160		
						CUSTOMER		SEE CHART		
						GENERAL MARKET		1 OF 1		

LOOSE PIECE		TAPE MOUNTED		"L" MAX.	"B" MIN (G1)	"D" MAX.	"E" MIN.	I.D. MIN.	O.D. MAX.	"A" DIM ±.02/0.5 (G1)
MATERIAL NO.	ENG. NO.	MATERIAL NO.	ENG. NO.							
191600012	NC-2214	191600070	NC-2214T	.62/15.7	.30/7.6	.19/4.8	.24/6.1	.09/2.3	.32/8.1	1.54/39.2
191600009	NC-2212	191600071	NC-2212T	.76/19.3	.30/7.6	.23/5.8	.27/6.9	.10/2.5	.36/9.1	1.63/41.4
191600002	NC-1610	191600083	NC-1610T	.90/22.8	.28/7.1	.28/7.1	.38/9.6	.15/3.8	.45/11.4	1.75/44.5
191600024	NC-8	191600028	NC-8T	1.10/27.9	.42/10.6	.36/9.1	.48/12.2	.21/5.3	.57/14.5	1.86/47.4



NOTES:

- MATERIAL: SLEEVE: TIN-PLATED COPPER  
INSULATION: 6/6 NYLON,  
NATURAL TRANSLUCENT
- PARTS ARE ROHS COMPLIANT.

SALES DRAWING

CORRECT TOLERANCES EC NO: WNA2010-0673 DRAWN BY: DR. W. H. THRODAHL 2010/05/07 CHKD. BY: R. DEROSS 04/02/23 APPR. BY: J. MACNEIL 2010/06/23	QUALITY SYMBOLS	GENERAL TOLERANCES (UNLESS SPECIFIED)	DIMENSION STYLE	SCALE	DESIGN UNITS	THIRD ANGLE PROJECTION	
	▽=0 ▽=0	mm INCH	IN/MM	5:1	INCH		
		4 PLACES ± --- ± --- 3 PLACES ± --- ± --- 2 PLACES ± --- ± --- 1 PLACE ± --- ± ---	DRAWN BY DATE H. BEITZE 04/02/23 CHECKED BY DATE R. DEROSS 04/02/23 APPROVED BY DATE R. DEROSS 04/02/23	TITLE	CLOSED END CONNECTORS NYLON INSULATED		
		ANGULAR ± ---°	MATERIAL NO.	SEE CHART	DOCUMENT NO.	MOLEX INCORPORATED SD-19160-001	
G1	DESCRIPTION	DRAFT WHERE APPLICABLE MUST REMAIN WITHIN DIMENSIONS	SIZE B	THIS DRAWING CONTAINS INFORMATION THAT IS PROPRIETARY TO MOLEX INCORPORATED AND SHOULD NOT BE USED WITHOUT WRITTEN PERMISSION			SHEET NO. 1 OF 1