

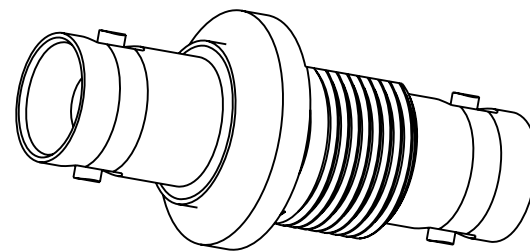
NOTES:

1. MATERIALS AND FINISHES:
 BODIES, LOCK RING - BRASS, NICKEL PLATING
 CONTACTS - BeCu, GOLD PLATING
 INSULATORS - PTFE
 GASKET - SILICONE RUBBER, RED
2. ELECTRICAL:
 A. IMPEDANCE: 50 OHM
3. MECHANICAL:
 A. DURABILITY: 500 CYCLES MIN.
 B. TEMPERATURE RANGE: -65° C TO +165° C
4. PACKAGING:
 A. QUANTITY: SINGLE PACK
 B. MARKING: BAG TO BE MARKED
 "AMPHENOL RF, 31-3220-1021, 1250-0161, AND DATE CODE"
5. MAX. PANEL THICKNESS=6.98mm — 2 SPACES

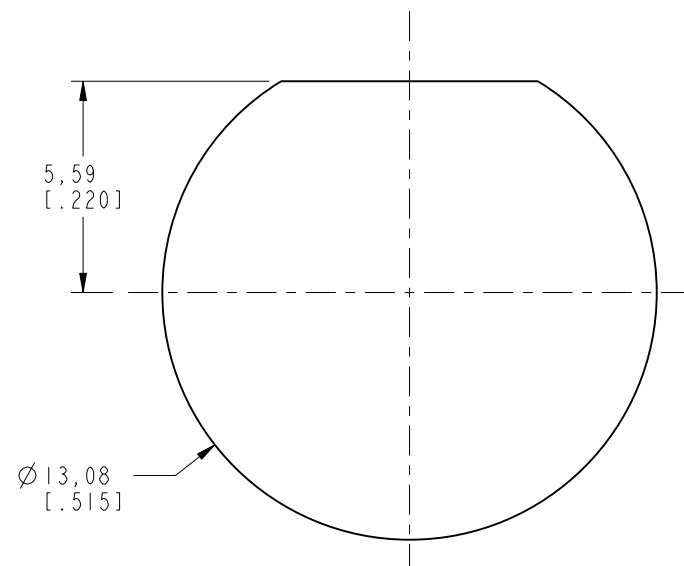
THIRD ANGLE PROJ.

REVISIONS

REV	DESCRIPTION	DATE	ECO	APPR
--	RELEASE TO MFG.	--	--	--
K	COD SHEET ADDED	17-Sep-14	49594	RM



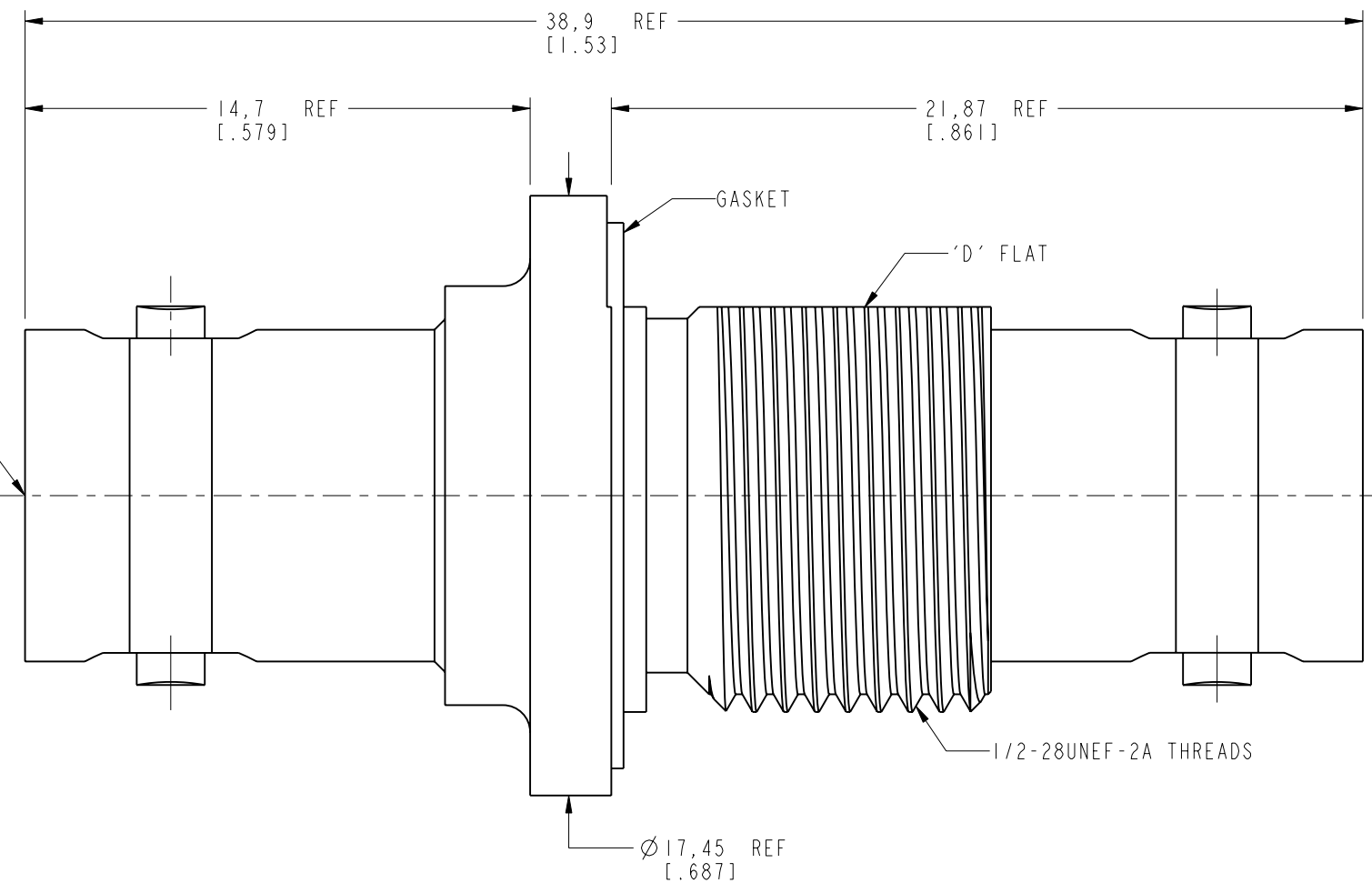
SCALE 1.800



SCALE 5.000

RECOMMENDED PANEL CUTOUT DIMENSIONS

INTERFACE PER
 MIL-STD-348
 SERIES: BNC JACK
 50 OHM
 TYP(2)



CUSTOMER OUTLINE DRAWING

ALL OTHER SHEETS ARE FOR INTERNAL USE ONLY

UNLESS OTHERWISE SPECIFIED, DIMENSIONS ARE IN METRIC AND TOLERANCES ARE:
 <0.5mm ±0.05mm 0.5 - 6mm ±0.1mm 6 - 30mm ±0.2mm 30 - 120mm ±0.3mm ANGLES ±1°

NOTICE - These drawings, specifications, or other data (1) are, and remain the property of Amphenol corp. (2) must be returned upon request; and (3) are confidential and not to be disclosed to any person other than those to whom they are given by Amphenol Corp. the furnishing of these drawings, specifications, or other data by Amphenol Corp., or to any other person to anyone for any purpose is not to be regarded by implication or otherwise in any manner licensing, granting rights to permitting such holder or any other person to manufacture, use or sell any product, process or design, patented or otherwise, that may in any way be related to or disclosed by said drawings, specifications, or other data.

MATERIAL	SEE NOTES
REFERENCE:	DOR 305553-51 AGILENT 1250-0161
CONFIGURATION LEVEL:	<input type="checkbox"/> <input type="checkbox"/> <input type="checkbox"/> <input type="checkbox"/>
FINISH	

DRAWN	A ARUN PRABU	DATE	10-Mar-14
ENGINEER	K.CAPOZZI	DATE	10-Mar-14
APPROVED	S.HSIEH	DATE	17-Sep-14
CAD FILE			

TITLE	
BNC ADAPTER (PRESSURIZED) JACK TO JACK	
SCALE: 5.0:1.0	SHEET 2 OF 2
DWG SIZE	REV
B	K

Amphenol RF	
www.amphenolrf.com	
DRAWING NO.	31-3220-1021
ITEM NO.	31-3220-1021
PART NO.	31-3220-1021