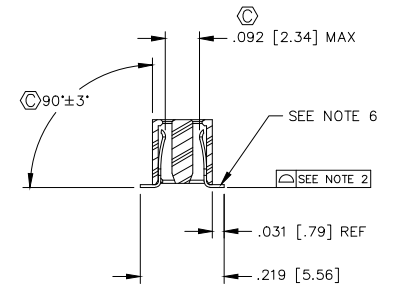
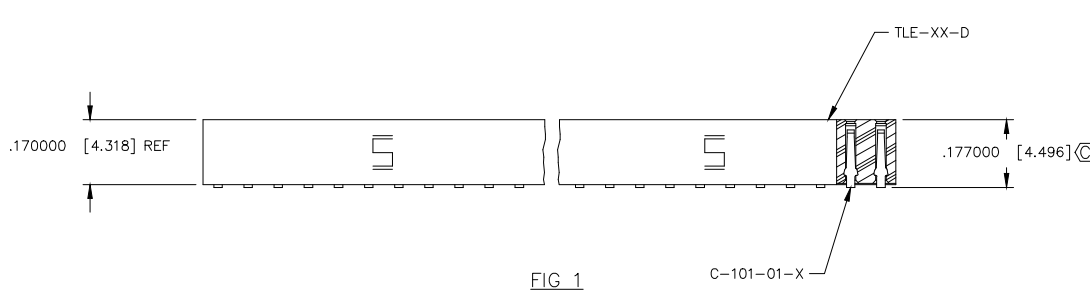
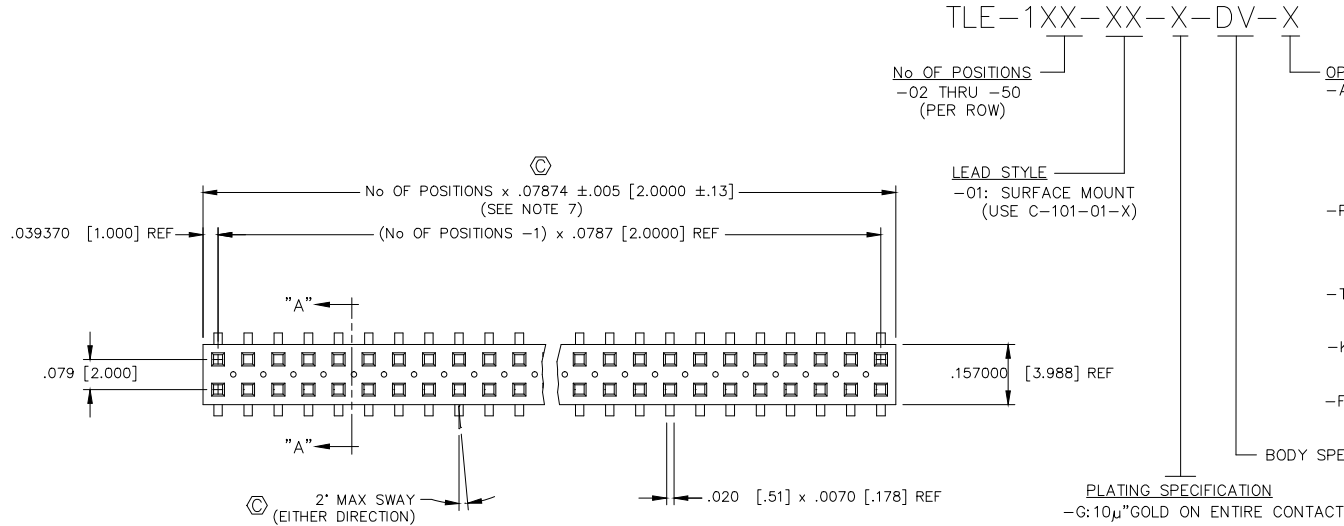


REVISION AI

DO NOT SCALE FROM THIS PRINT

DIMENSIONS ARE IN INCHES		TOLERANCES ARE:	
ONE PLACE DECIMALS ± .1	THREE PLACE DECIMALS ± .005	ANGLES ± 2°	
TWO PLACE DECIMALS ± .01	FOUR PLACE DECIMALS ± .0020		

TITLE: DUAL ROW 2mm x 2mm ASSEMBLY	DWG NO: TLE-1XX-XX-X-DV-X SHEET 1 OF 2
--	--



NOTES:

1. MINIMUM PUSHOUT FORCE: .4 lb.
2. COPLANARITY; POS -02 THRU -26: .004  
POS -27 THRU -50: .006
3. REPRESENTS A CRITICAL DIMENSION.
4. ALL POSITIONS TO BE PACKAGED IN TUBES.
5. FOR EVERY FINISHED PART, ONE POSITION WILL BE LOST WHEN CUTTING BODY TO LENGTH.
6. BURR ALLOWANCE: .003 [.08] MAX
7. CUT FLASH TO BE .010 [.25] MAX WITH NO FLASH ALLOWED IN HOLES OR EXTENDING BELOW LEADS.
8. END WALLS TO BE .027+/- .005 [.69+/- .13] AFTER CUT.
9. -TR OPTION ORDERS INVOLVING PARTIAL REEL QUANTITIES MAY BE PACKAGED ACCORDING TO THE SAMTEC PACKAGING EFFICIENCY STANDARDS (SPES) FOUND ON WWW.SAMTEC.COM.
10. -FR OPTIONS WILL BE SHIPPED AT THE MAX QUANTITY PER REEL, BASED ON OPTIONS SELECTED.

PATENT NUMBERS  
5713755 / 5961339

**\*PROPRIETARY NOTE\***

THIS DOCUMENT CONTAINS CONFIDENTIAL AND PROPRIETARY INFORMATION AND ALL RIGHTS AND SALES RIGHTS ARE EXPRESSLY RESERVED BY SAMTEC, INC. THIS DOCUMENT SHALL NOT BE DISCLOSED, REPRODUCED, TRANSFERRED OR INCORPORATED IN ANY OTHER PROJECT IN ANY MANNER WITHOUT THE EXPRESS WRITTEN CONSENT OF SAMTEC, INC.

MATERIAL:  
BODY:  
VECTRA E130i  
COLOR: BLACK  
TERMINAL:  
PHOSPHER BRONZE

**samtec**

520 PARK EAST BLVD. NEW ALBANY, INDIANA 47150  
PHONE (812) 944-6733 P.O. BOX 1147  
CODE 55322

MADE BY: D PURVIS 01-20-97 TLE-1XX-XX-X-DV-X  
SHEET 1 OF 2