



ELECTRONICS, INC.
 44 FARRAND STREET
 BLOOMFIELD, NJ 07003
 (973) 748-5089
<http://www.nteinc.com>

NTE30108 LED – Dual Color 5mm Super Red/Yellow Green

Features:

- RoHS Compliant
- White Diffused
- Common Anode Pin Configuration

Absolute Maximum Ratings: ($T_A = +25^\circ\text{C}$ unless otherwise specified)

Power Dissipation, P_d		
Super Red	110mW
Yellow Green	84mW
Continuous Forward Current, I_F		
Super Red	30mA
Yellow Green	25mA
Peak Forward Current (1/10 Duty Ratio, 0.1ms Pulse Width), I_{FM}	50mA
Reverse Voltage, V_R	5V
LED Junction Temperature, T_j	+100°C
Operating Temperature Range, T_{opr}	-25°C to +80°C
Storage Temperature Range, T_{stg}	-40°C to +100°C
DIP Soldering Temperature (During Soldering, 3mm from body, 5sec max), T_L	+260°C

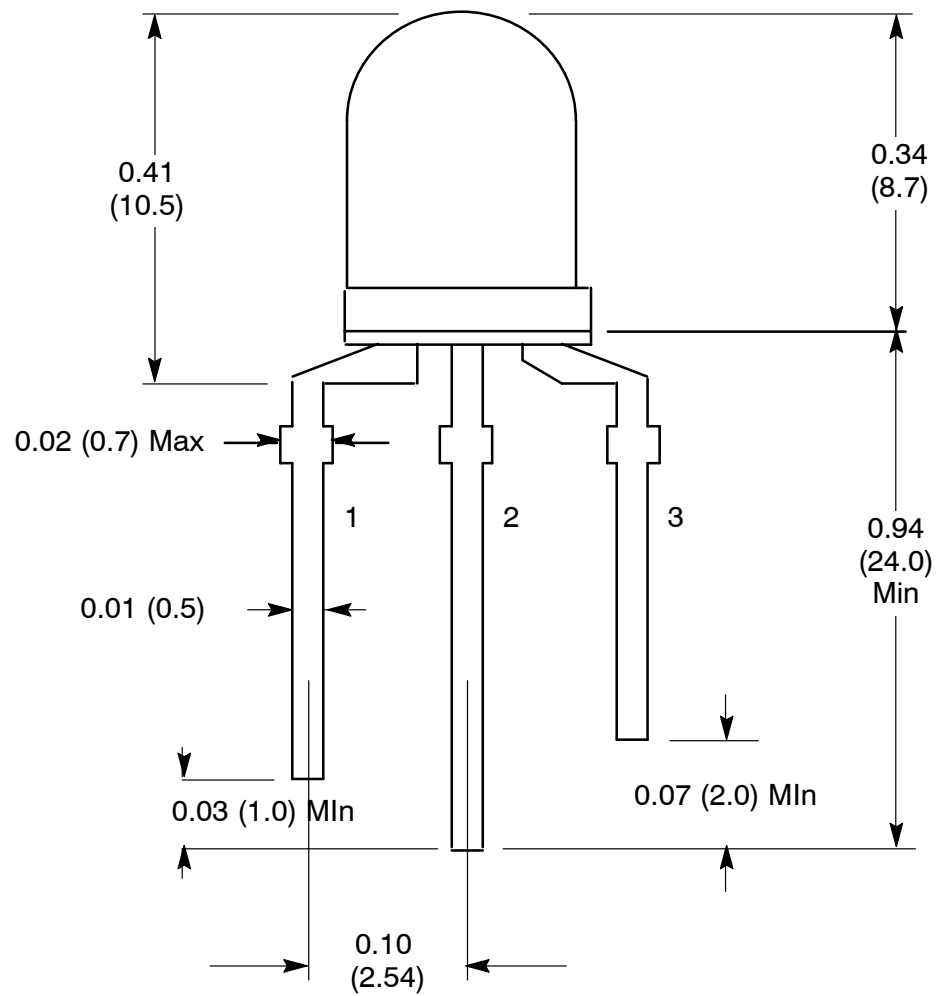
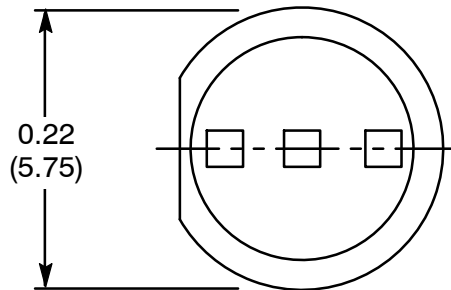
Electro-Optical Characteristics: ($T_A = +25^\circ\text{C}$ unless otherwise specified)

Parameter	Symbol	Test Conditions	Min	Typ	Max	Unit
View Angle of Half Power	$2\theta_{1/2}$	$I_F = 20\text{mA}$	-	40	-	deg
Forward Voltage	VF	$I_F = 20\text{mA}$	-	1.80	2.40	V
Super Red				2.15	2.80	V
Yellow Green						
Luminous Intensity (Note 1)	IV	$I_F = 20\text{mA}$	50	100	-	mcd
Super Red				20	40	-
Yellow Green						
Peak Emission Wavelength	λ_p	$I_F = 20\text{mA}$	-	660	-	nm
Super Red				570	-	nm
Yellow Green						
Dominate Wave Length (Note 2)	$\lambda_d(\text{HUE})$	$I_F = 20\text{mA}$	-	643	-	nm
Super Red				567	-	nm
Yellow Green						

Note 1. Luminous intensity is measured with an Exeltron 2001, Tolerance = 30%.

Note 2. The dominate wavelength, λ_d , is derived from the CIE Chromaticity Diagram and represents the color of the device.





- 1. Red -
- 2. Common Anode Lead +
- 3. Green -