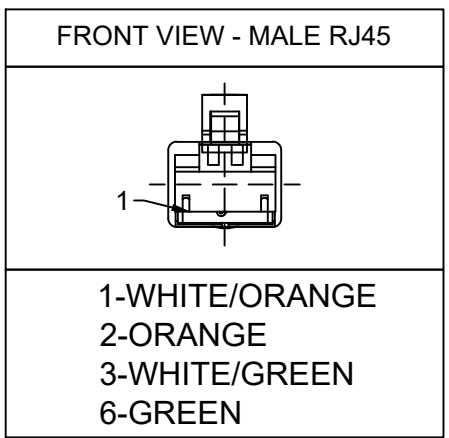
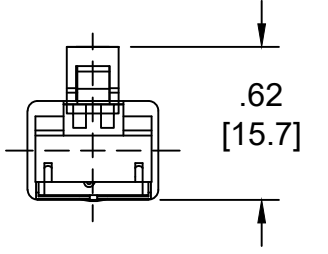
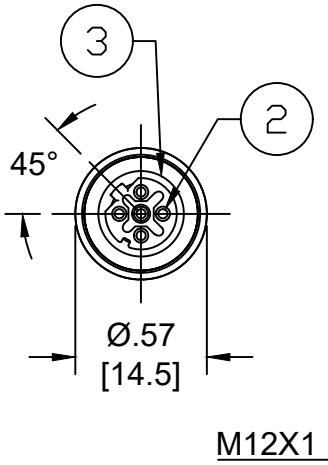
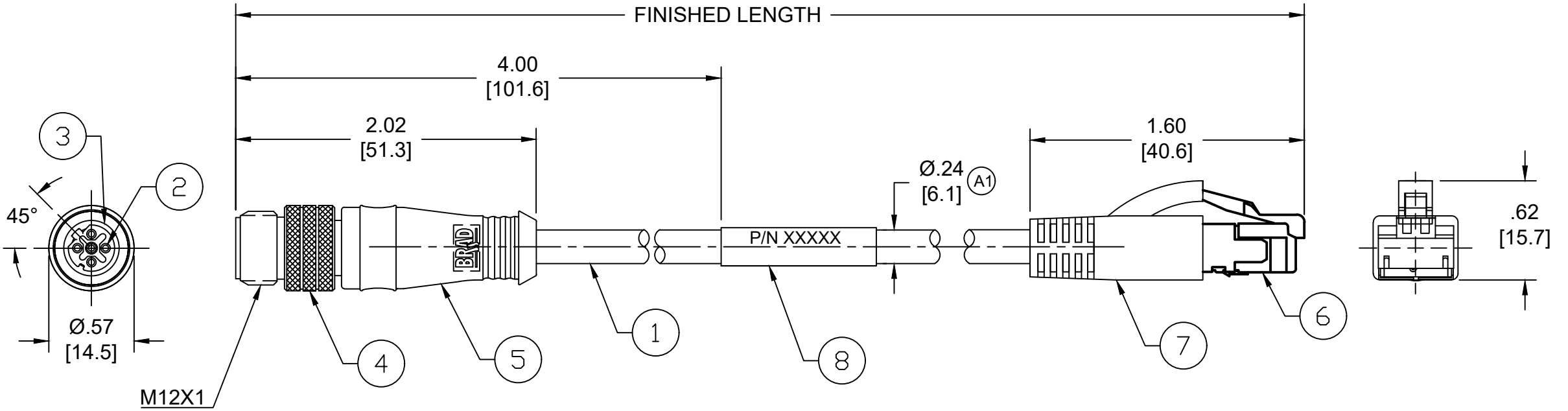


| PART NO    | ENGINEERING NO. | FINISHED LENGTH   |
|------------|-----------------|-------------------|
| 1300480309 | E16A06004M010   | 1M [ 3FT 3 IN ]   |
| 1300480406 | E16A06004M400   | 40M [131FT 3 IN]  |
| 1300480377 | E16A06004M850   | 85M [278FT 10 IN] |



NOTES:

- MATERIAL: SEE TABLE
- FINISH: SEE TABLE
- ELECTRICAL:  
VOLTAGE: 30V AC/DC  
CURRENT: 1.5A
- TEMP RATING: -20°TO +75°C
- PROTECTION: IP67/69K (WHEN MATED)
- UL RECOGNIZED FILE: E200650 (A1)
- ALL DIMENSIONS ARE FOR REFERENCE UNLESS TOLERANCED OR NOTED OTHERWISE



MECHANICAL CHARACTERISTICS: (A1)

|                 |                                                                                                                                             |
|-----------------|---------------------------------------------------------------------------------------------------------------------------------------------|
| FLEX LIFE:      | (126 CYCLES/MIN @ 20° C)<br>1 MILLION CYCLE TEST (10X CABLE O.D., MINIMUM RADIUS)<br>10 MILLION CYCLE TEST (20X CABLE O.D., MINIMUM RADIUS) |
| TORSIONAL FLEX: | (1 LB LOAD, 360°, 71 CYCLES/MIN @ 20° C)<br>3 MILLION CYCLE TEST                                                                            |

PART NUMBER LEGEND  
**E16A06004M005**  
FINISHED LENGTH  
M005 = 0.5 METER  
M010 = 1 METER  
M100 = 10 METER

(A1)

CABLE LENGTH TOLERANCES

|                          |                         |
|--------------------------|-------------------------|
| <.3M [1FT]:              | +19mm-0 [ +.75in-0]     |
| .3 - .9M [1 - 3FT]:      | +44.5mm-0 [+1.75in-0]   |
| .9 - 1.8M [3 - 6FT]:     | +55.6mm-0 [+2.19in-0]   |
| 1.8 - 3.7M [6 - 12FT]:   | +88.9mm-0 [+3.50in-0]   |
| 3.7 - 7.3M [12 - 24FT]:  | +165.1mm-0 [+6.50in-0]  |
| 7.3-14.6M [24 - 48FT]:   | +317.5mm-0 [+12.50in-0] |
| 14.6 - 30.5M [48-100FT]: | +622.3mm-0 [+24.50in-0] |
| OVER 30M [100FT]         | +2% OF FINISHED LENGTH  |

| ITEM | DESCRIPTION           | MATERIAL      | FINISH           |
|------|-----------------------|---------------|------------------|
| 8    | WRAP LABEL            | VINYL         | BLACK/WHITE      |
| 7    | RJ45 BOOT, HOODED     | PVC           | BLACK            |
| 6    | RJ45 PLUG             | POLYCARBONATE | TRANSPARENT      |
| 5    | OVERMOLD              | PUR           | BLACK            |
| 4    | COUPLING NUT          | BRASS         | NICKEL PLATED    |
| 3    | INSERT                | PUR           | BLACK            |
| 2    | CONTACT PIN           | COPPER ALLOY  | GOLD OVER NICKEL |
| 1    | CABLE, ETHERNET, 24-4 | TPE           | TEAL             |

|                                                      |                                                                                                                                               |                                   |                                                                                                  |                   |                       |                                 |
|------------------------------------------------------|-----------------------------------------------------------------------------------------------------------------------------------------------|-----------------------------------|--------------------------------------------------------------------------------------------------|-------------------|-----------------------|---------------------------------|
| FUNCTIONAL SYMBOLS                                   | THIS DRAWING CONTAINS INFORMATION THAT IS PROPRIETARY TO MOLEX ELECTRONIC TECHNOLOGIES, LLC AND SHOULD NOT BE USED WITHOUT WRITTEN PERMISSION |                                   | CURRENT REV DESC: ADDED BOM, UL NUMBER, CABLE DIA, MECH CHART, MATERIAL NUMBER TABLE & TOL CHART |                   |                       |                                 |
|                                                      | $F_A=0$<br>$F_C=0$<br>$F_P=0$                                                                                                                 | DIMENSION UNITS<br><b>INCH/MM</b> |                                                                                                  |                   |                       |                                 |
| DIVISIONAL SYMBOLS                                   | GENERAL TOLERANCES (UNLESS SPECIFIED)                                                                                                         |                                   | EC NO: 704134                                                                                    |                   | MIC D-CODE / ETHERNET |                                 |
|                                                      | 4 PLACES                                                                                                                                      | ±----                             | ±----                                                                                            | DRWN: ABENJAMINLW | 2021/10/01            | 4P M12 MALE/RJ45 MALE, STRAIGHT |
|                                                      | 3 PLACES                                                                                                                                      | ±----                             | ±----                                                                                            | CHK'D: RSTONE     | 2022/04/27            | #24-4 TPE HI-FLEX               |
|                                                      | 2 PLACES                                                                                                                                      | ±----                             | ±----                                                                                            | APPR: BWOODMAN    | 2022/05/04            | PRODUCT CUSTOMER DRAWING        |
| 1 PLACE                                              | ±----                                                                                                                                         | ±----                             | INITIAL REVISION:                                                                                |                   | DOCUMENT NUMBER       | DOC TYPE/DOC PART/REVISION      |
| 0 PLACES                                             | ±----                                                                                                                                         | ±----                             | DRWN: BARDEN                                                                                     | 2014/02/19        | SD-130048-009         | PSD 001 A1                      |
| ANGULAR TOL ± ---- °                                 |                                                                                                                                               | THIRD ANGLE PROJECTION            |                                                                                                  | APPR: JFMURPHY    | 2014/03/13            |                                 |
| DRAFT WHERE APPLICABLE MUST REMAIN WITHIN DIMENSIONS |                                                                                                                                               | DRAWING                           |                                                                                                  | SERIES            | MATERIAL NUMBER       | CUSTOMER                        |
|                                                      |                                                                                                                                               | B-SIZE                            |                                                                                                  | 130048            | SEE CHART             | GENERAL MARKET                  |
|                                                      |                                                                                                                                               |                                   |                                                                                                  |                   |                       | SHEET NUMBER                    |
|                                                      |                                                                                                                                               |                                   |                                                                                                  |                   |                       | 1 OF 1                          |