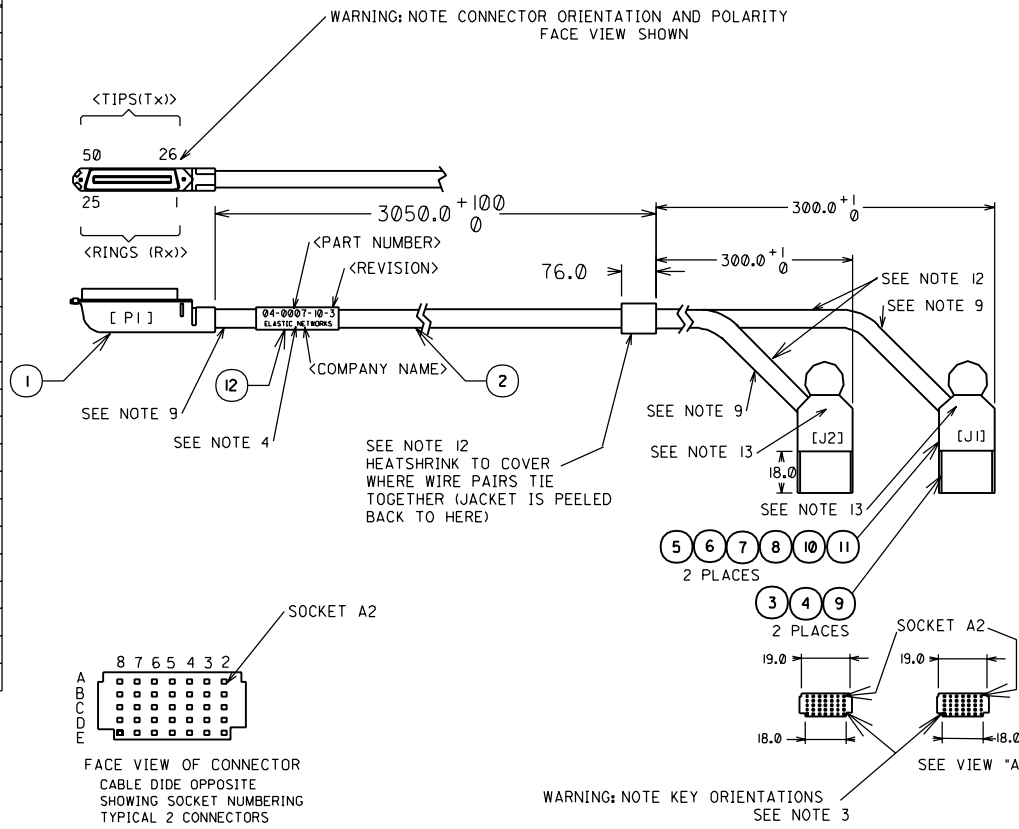


FROM CONN	FROM PIN NO.	WITH PAIR NO.	WITH WIRE COLOR	TO CONN	TO PIN NO.	FROM CONN	FROM PIN NO.	WITH PAIR NO.	WITH WIRE COLOR	TO CONN	TO PIN NO.
J1	B2	R1	BLU/WHT	P1	1	J1	A2	T1	WHT/BLU	P1	26
	E2	R2	ORN/WHT		2		D2	T2	WHT/ORG		27
	B3	R3	GRN/WHT		3		A3	T3	WHT/GRN		28
	E3	R4	BRN/WHT		4		D3	T4	WHT/BRN		29
	B4	R5	SLT/WHT		5		A4	T5	WHT/SLT		30
	E4	R6	BLU/WHT		6		D4	T6	RED/BLU		31
	B6	R7	ORN/RED		7		A6	T7	RED/ORG		32
	E6	R8	GRN/RED		8		D6	T8	RED/GRN		33
	B7	R9	BRN/RED		9		A7	T9	RED/BRN		34
	E7	R10	SLT/RED		10		D7	T10	RED/SLT		35
	B8	R11	BLU/BLK		11		A8	T11	BLK/BLU		36
	E8	R12	ORG/BLK		12		D8	T12	BLK/ORG		37
J2	B2	R13	GRN/BLK	P1	13	J2	A2	T13	BLK/GRN	P1	38
	E2	R14	BRN/BLK		14		D2	T14	BLK/BRN		39
	B3	R15	SLT/BLK		15		A3	T15	BLK/SLT		40
	E3	R16	BLU/YEL		16		D3	T16	YEL/BLU		41
	B4	R17	ORG/YEL		17		A4	T17	YEL/ORG		42
	E4	R18	GRN/YEL		18		D4	T18	YEL/GRN		43
	B6	R19	BRN/YEL		19		A6	T19	YEL/BRN		44
	E6	R20	SLU/YEL		20		D6	T20	YEL/SLT		45
	B7	R21	BLU/VIO		21		A7	T21	VIO/BLU		46
	E7	R22	ORG/VIO		22		D7	T22	VIO/ORG		47
	B8	R23	GRN/VIO		23		A8	T23	VIO/GRN		48
	E8	R24	BRN/VIO		24		D8	T24	VIO/BRN		49
NOT USED			SLT/VIO	25	NOT USED		T25	VIO/SLT		50	

NOTES:

- UNLESS OTHERWISE SPECIFIED ALL DIMENSIONS ARE IN MILLIMETERS;
2 DECIMAL PLACES +/- 0.254; ANGLES +/- 1°
- TO CONVERT INCHES TO MILLIMETERS USE 1 INCH= 25.40 MILLIMETERS.
- CONNECTOR FACE IS KEYED BY DIMENSIONS SHOWN.
- LOCATE PRODUCT ID LABEL APPROX. AS SHOWN. CABLE PART NUMER, REVISION AND COMPANY NAME SHALL BE PRINTED ON LABEL AS SHOWN.
- UNASSIGNED
- UNASSIGNED
- CABLE ASSEMBLY SHALL BE 100% TESTED FOR SHORTCUTS AND CONTINUITY.
- UNASSIGNED
- APPLY WRAP AROUND LABEL ITEM 12 IN LACATIONS SHOWN WITH CONNECTOR DESIGNATIONS STAMPED ON THE RESPECTIVE LABELS.
- USE HAND TOOL FOR AWG 22-26, MOLEX PART NUMBER 69008-1051 OR EQUIV
- SEE SEPERATE BILL OF MATERIAL E 85362-004
- APPLY HEATSHRINK ITEM 13 OVER EXPOSED TWISTED PAIR WIRING BETWEEN BREAK OUT POINT AND THE CONNECTOR BACKSHELL. ENDS OF HEATSHRINK SHALL BE ENCAPSULATED BY CONNECTOR BACKSHELL.
- APPLY LABEL ITEM 12 IN LOCATIONS SHOWN WITH THE FOLLOWING STAMPED ON LABEL: " RIGH SIDE "



EC NO. MC2000-0443 DRWN: DONDREJ 00/06/09 CHK: KN APPR: FB	QUALITY SYMBOLS MAJOR = CRITICAL = C =	GENERAL TOLERANCES: (UNLESS SPECIFIED)		SCALE : <input checked="" type="checkbox"/> mm <input type="checkbox"/> INCH	DESIGN UNITS <input checked="" type="checkbox"/> mm <input type="checkbox"/> INCH	THIRD ANGLE PROJECTION <input type="checkbox"/> mm <input checked="" type="checkbox"/> INCH <input type="checkbox"/> INCH <input type="checkbox"/> mm	SHT REV	
		4 PLACES ±0. ±. 3 PLACES ±0. ±. 2 PLACES ±0. ±. 1 PLACE ±0. ±. ANGULAR: ± 1/2°	DRAWN BY & DATE DONDREJ 00/06/09 CHECKED BY & DATE KN / / APPROVED BY & DATE FB / / CAD FILENAME	TITLE: OMNIGRID-CHAMP CABLE ASSY. 50 way CABLE		REVISE ON CAD ONLY		
A	REV	DRAFT WHERE APPLICABLE MUST REMAIN WITHIN DIMENSIONS		THIS DRAWING CONTAINS INFORMATION THAT IS PROPRIETARY TO MOLEX INCORPORATED AND SHOULD NOT BE USED WITHOUT WRITTEN PERMISSION.		MATERIAL NO. 85362-0002	DRAWING NO. SD-85362-002	SHEET NO. 1 OF 1