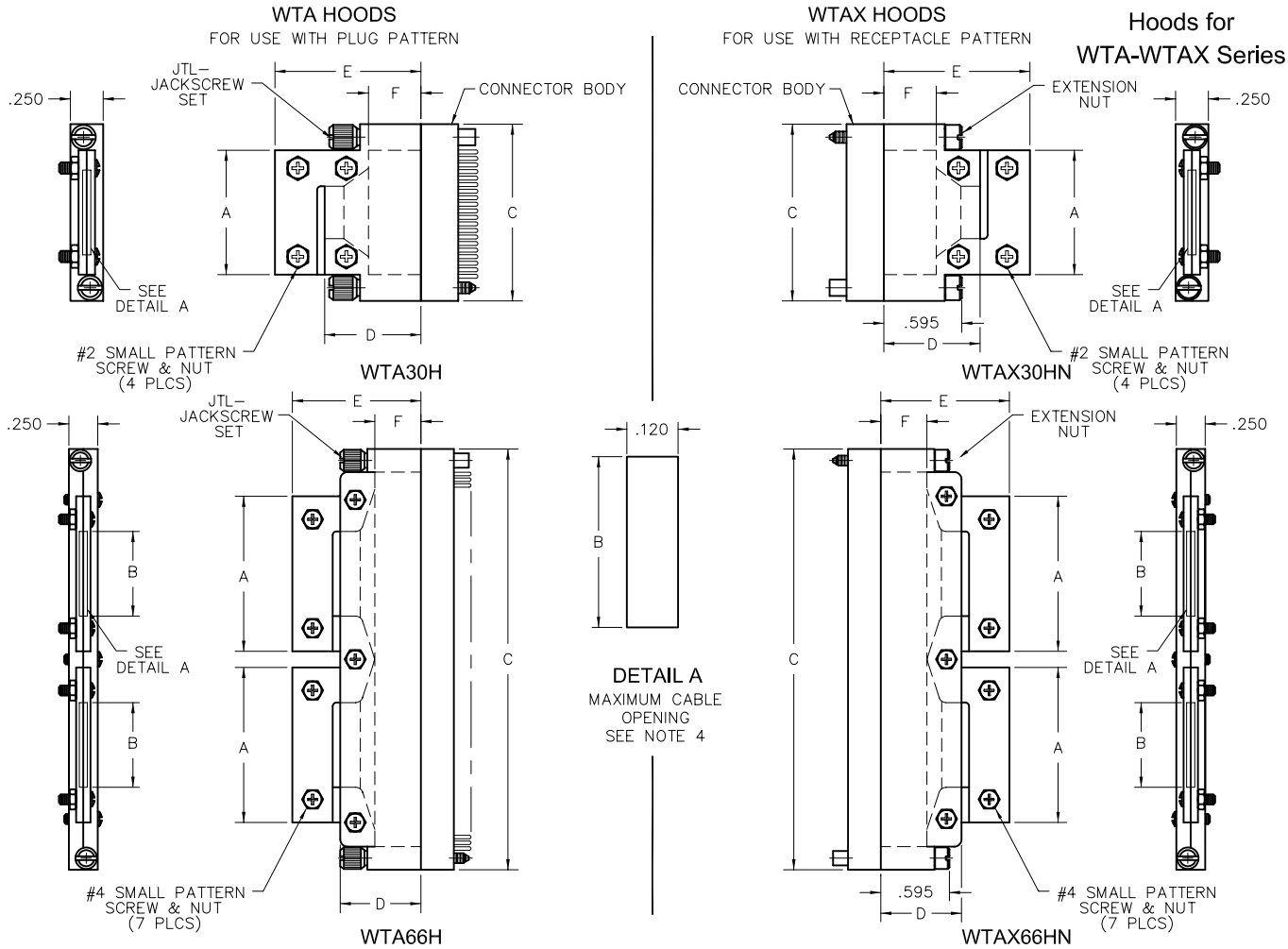


# Accessories



CODE CHART												PART NO. DESIGNATION						
WTA HOODS, PLUG IMAGE						WTAX HOODS, RECEPTACLE IMAGE						SERIES	SIZE	HOOD DESIGNATION	FOR HARDWARE TYPE			
PART NO.	A	B $\pm .015$ $-.025$	C	D	E	F	PART NO.	A	B $\pm .015$ $-.025$	C	D					E	F	
WTA20H	.950	.400	1.350				WTAX30H	1.450	.800	1.850				WTA	20 THRU 70	H	JTL - LONG TURNING JACKSCREW SET	
WTA30H	1.450	.800	1.850				WTAX36H	1.300	.750	2.150								
WTA36H	1.300	.750	2.150				WTAX40H	1.500	.950	2.350								
WTA40H	1.500	.950	2.350				WTAX44H	1.700	1.150	2.550								
WTA44H	1.700	1.150	2.550				WTAX50H	2.000	1.450	2.850	.700	1.115	.400	WTAX	30 THRU 70	HN	J - FIXED JACKSCREW SET SY - GUIDE SET	
WTA50H	2.000	1.450	2.850	.700	1.115	.400	WTAX54H	1.950	1.400	3.050								
WTA54H	2.200	1.650	3.050				WTAX56H	2.060	1.500	3.150								
WTA56H	2.060	1.500	3.150				WTAX60H	1.240	.700	3.350								
WTA60H	1.240	.700	3.350				WTAX66H	1.345	.735	3.650								
WTA66H	1.350	.735	3.650				WTAX70H	1.445	.885	3.850								
WTA70H	1.445	.885	3.850															

**NOTES:**

- DIMENSIONS ARE SYMMETRICAL ABOUT CENTER LINE.
- HOODS ARE SUPPLIED UNASSEMBLED.
- HOOD MATERIAL: POLYETHYLENE, HIGH DENSITY  
CLAMPING SCREWS AND NUTS: STAINLESS STEEL
- THE TOP CLAMPS ARE FLEXIBLE TO ACCOMMODATE MAXIMUM CABLE BUNDLE.
- CHECK WITH SALES DEPARTMENT FOR SIZES NOT LISTED.
- SCREWS SUPPLIED ARE CROSS-RECESS ONLY.
- TOLERANCES:  $\pm .015$
- SIZES 20-30 USE #2 SMALL PATTERN SCREW & NUT.  
SIZES 36-70 USE #4 SMALL PATTERN SCREW & NUT.
- HOODS CANNOT BE USED ON CONNECTORS SPECIFYING THE -C45 OPTION CODE.

**EXAMPLES:**

- WTA\*\*H = DESIGNATES HOOD USED WITH JTL HARDWARE
- WTA\*\*HN = DESIGNATES HOOD USED WITH J OR SY HARDWARE (INCLUDES EXTENSION NUTS).
- WTAHN = DESIGNATES EXTENSION NUTS ONLY.

\*\* = DESIGNATES CONNECTOR SIZE. SEE PAGE WA-7 FOR ADDITIONAL INFORMATION ON EXTENSION NUTS.