

RECOMMENDED LAND PATTERN DIMENSION OF P.C.B. (MOUNTING SIDE)

- NOTE 1. LEAD CO-PLANARITY SHALL BE 0.1mm MAX.  
 2. EMBOSSED CARRIER TAPE PACKAGING SHALL BE APPLIED FOR THIS PRODUCT.  
 SEE NEXT PAGE FOR DETAILS.  
 3. FOR MODIFICATION, ETC., PREVENTIVE HOLE FOR SINK MARK MAY BE ADDED ACCORDING TO CIRCUMSTANCES.  
 4. THE DIMENSIONS IN PARENTHESES ARE FOR REFERENCE.  
 5 NUMBER OF CONTACTS.

DIMENSION TABLE OF CONNECTOR AND P.C.B. LAND PATTERN.

PART No.	CODE No.	5	A	B	C	D	E
FX8-60P-SV1(92)	CL578-0041-0-92	60	24.6	23	20.7	17.4	22.2
FX8-80P-SV1(92)	CL578-0043-6-92	80	30.6	29	26.7	23.4	28.2
FX8-90P-SV1(92)	CL578-0044-9-92	90	33.6	32	29.7	26.4	31.2
FX8-100P-SV1(92)	CL578-0045-1-92	100	36.6	35	32.7	29.4	34.2
FX8-120P-SV1(92)	CL578-0046-4-92	120	42.6	41	38.7	35.4	40.2
FX8-140P-SV1(92)	CL578-0047-7-92	140	48.6	47	44.7	41.4	46.2

NO.	MATERIAL	FINISH	REMARKS	NO.	MATERIAL	FINISH	REMARKS
4	POLYESTER	(TOP COVER TAPE)		2	PHOSPHOR BRONZE		CONTACT AREA: GOLD 0.1μm min. LEAD AREA: TIN-PLATING 1μm min. UNDER PLATING: NICKEL 1μm min.
3	POLYSTYRENE	(EMBOSSED CARRIER TAPE)					
1	PPS	LIGHT BROWN (UL94V-0)					

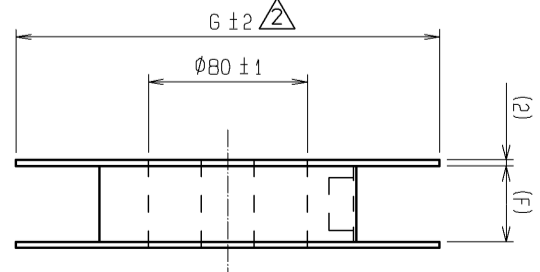
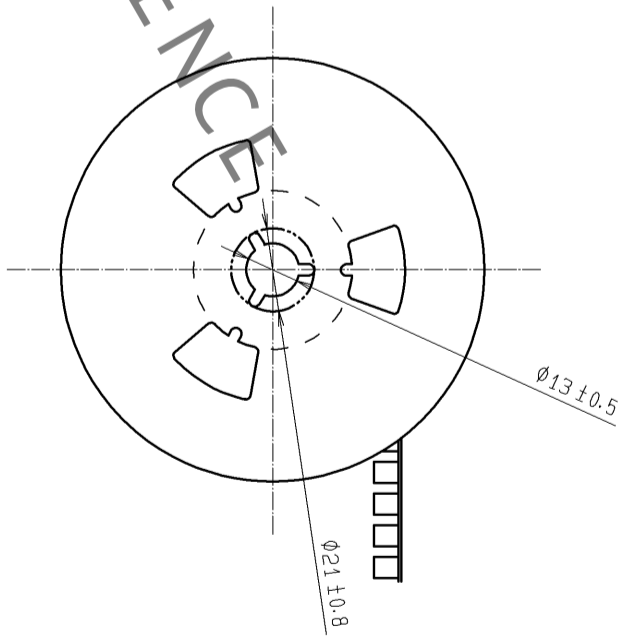
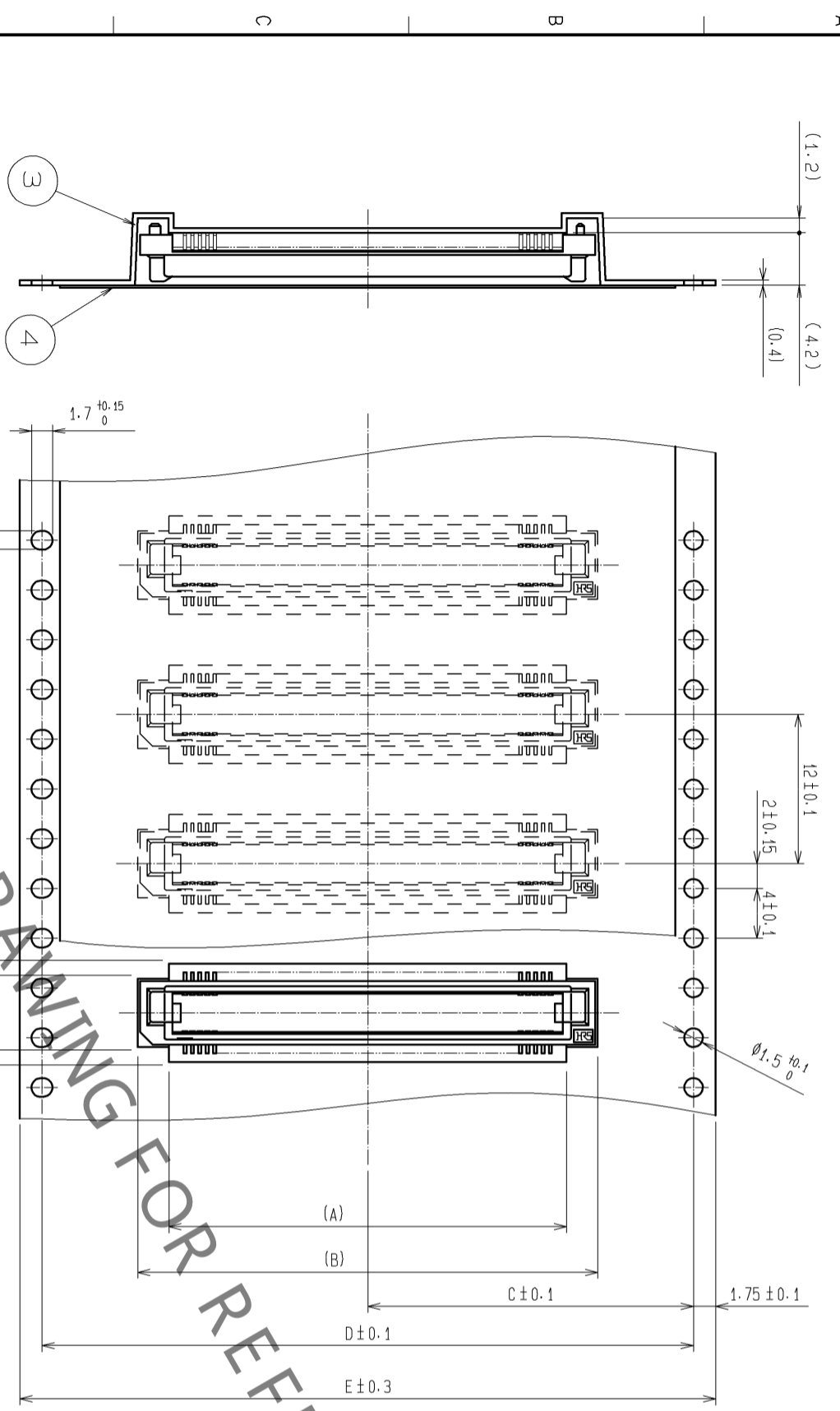
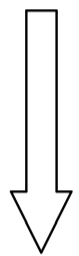
UNITS	SCALE	COUNT	DESCRIPTION OF REVISIONS	DESIGNED	CHECKED	DATE
mm	FREE	2	DIS-F-006743	CR. TAKESHIMA	HT. YAMAGUCHI	13.04.18



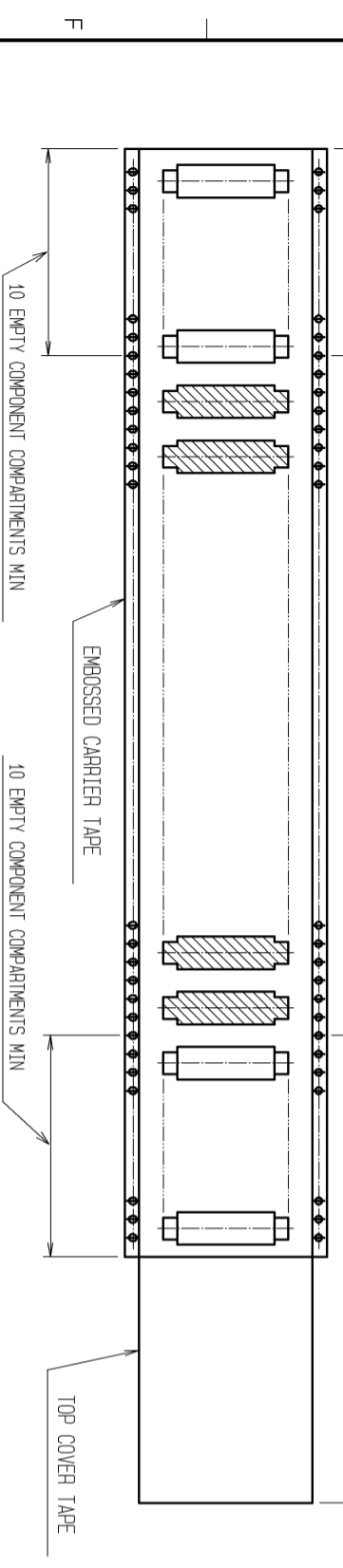
HIROSE ELECTRIC CO., LTD.  
 APPROVED: K.J. KATAYOSE 05.01.05 DRAWING NO. EDC3-150727-22  
 CHECKED: HS. OKAWA 05.01.05 PART NO. FX8-\*P-SV1(92)  
 DESIGNED: KT. DOI 05.01.05 CODE NO.  
 DRAWN: KT. DOI 05.01.05

DRAWING FOR PACKING(FREE)

UNREELING DIRECTION



TRAILER (1000 CONNECTORS)  
EQUIPPED (1000 CONNECTORS)  
LEADER(400mm MIN)



△ DIMENSION TABLE OF EMBOSSED CARRIER TAPE AND REEL.

PART NO.	CODE No.	2	A	B	C	D	E	F	G
FX8-60P-SV1(92)	CL578-0041-0-92	60	20	25	20.2	40.4	44	44.4	Φ330
FX8-80P-SV1(92)	CL578-0043-6-92	80	26	31	20.2	40.4	44	44.4	Φ330
FX8-90P-SV1(92)	CL578-0044-9-92	90	29	34	20.2	40.4	44	44.4	Φ330
FX8-100P-SV1(92)	CL578-0045-1-92	100	32	37	26.2	52.4	56	56.4	Φ360
FX8-120P-SV1(92)	CL578-0046-4-92	120	38	43	26.2	52.4	56	56.4	Φ360
FX8-140P-SV1(92)	CL578-0047-7-92	140	44	49	34.2	68.4	72	72.4	Φ360

NOTE 1 1 REEL : 1000 CONNECTORS

2 NUMBER OF CONTACTS

3 THE DIMENSIONS IN PARENTHESES ARE FOR REFERENCE.

FORM HC0011-5-8

**HRS**

DRAWING NO.	EDC3-150727-22
PART NO.	FX8-*P-SV1(92)
CODE NO.	

2/2