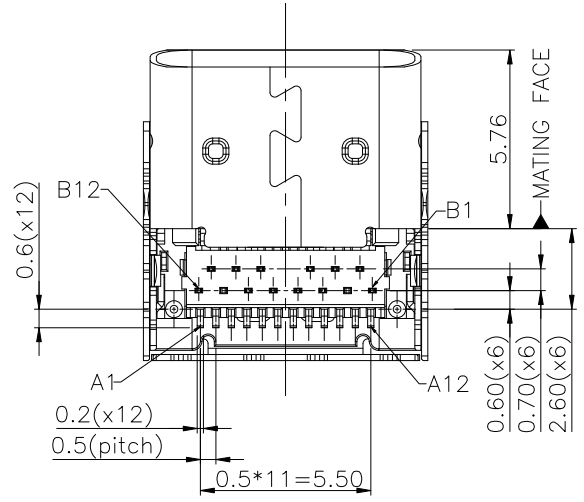
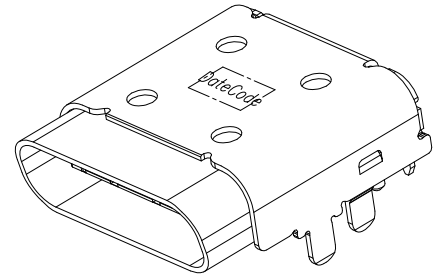
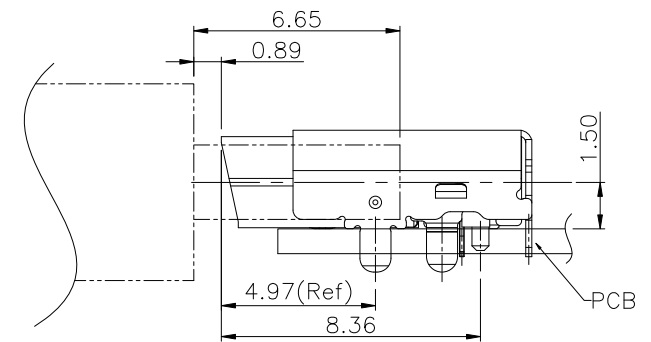
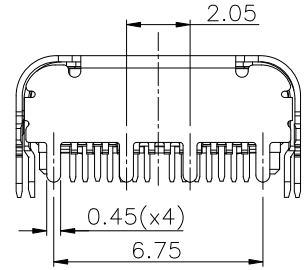
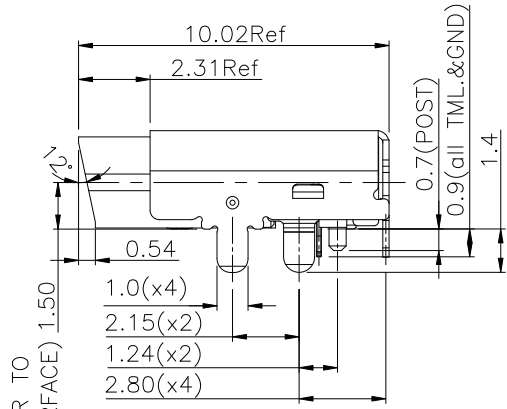
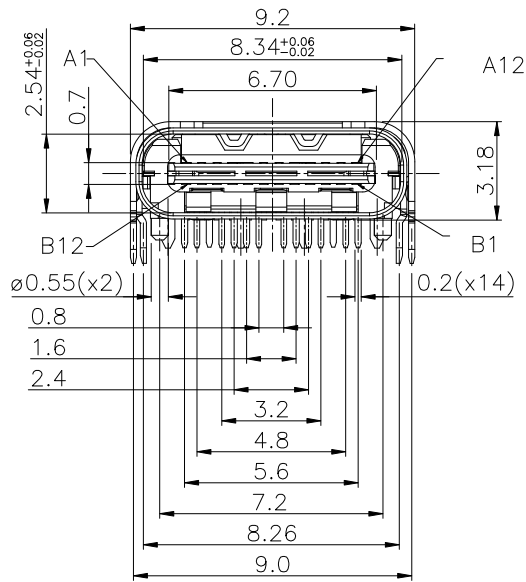


PRODUCT NUMBER
SEE PART NO. SCHEME



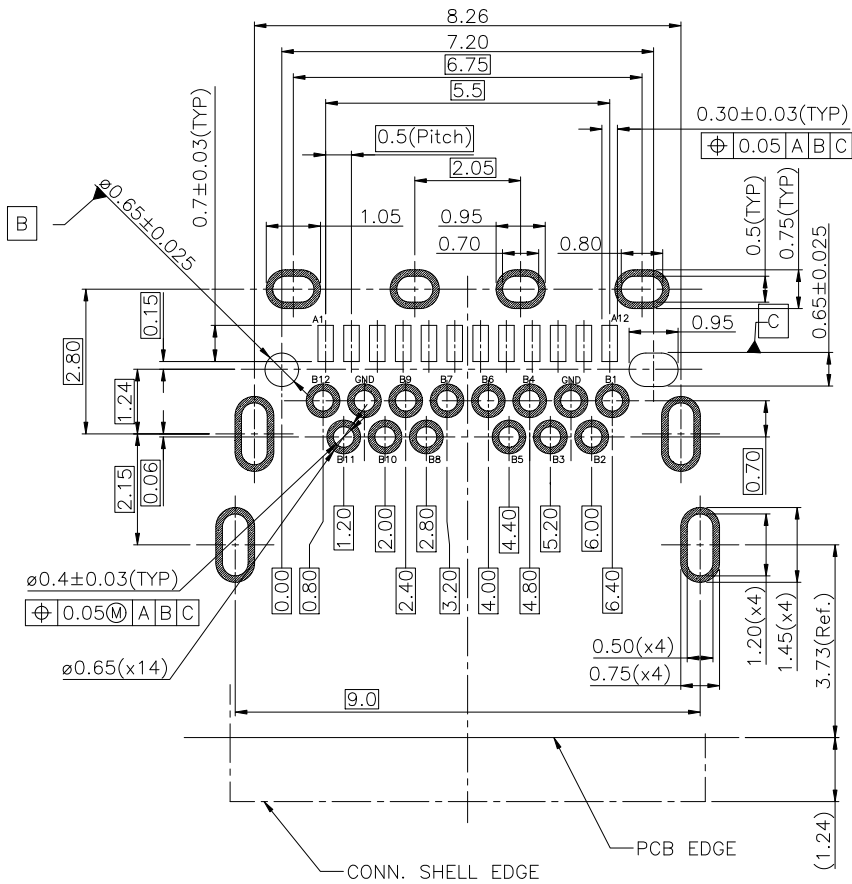
| | | | | |
|---|-----------------|-------|---------------|--|
| ⑥ | TOP CONTACT | 1 SET | COPPER ALLOY | Ni UNDER PLATING. MATTE TIN PLATING ON SOLDER AREA. |
| ⑤ | BOTTOM CONTACT | 1 SET | COPPER ALLOY | GOLD PLATING ON CONTACT AREA. (SEE P/N SCHEME) |
| ④ | SHIELDING PLATE | 1 PCS | STAINLESS | Ni PLATING OVERALL. |
| ③ | HOUSING | 1 PCS | THERMOPLASTIC | UL94V-0, BLACK |
| ② | SHELL | 1 PCS | STAINLESS | Ni PLATING OVERALL. |
| ① | TOP SHELL | 1 PCS | STAINLESS | Ni PLATING OVERALL. |

| ITEM | PART NAME | QTY | MATERIAL | REMARK |
|-------------|-----------|---------------------------------------|------------|---------------------------------------|
| mat'l. code | | surface | tolerance | projection |
| ltr | | ecn no | dr | date |
| A | | TAI | 2015-10-06 | 2015-09-21 |
| angles | | tolerances unless otherwise specified | ±0.3 | product family |
| X°±3° | | MM | MM | USB |
| dr | | KENNY TAI | 2015-09-21 | title |
| enr | | KENNY TAI | 2015-09-21 | USB 3.1 TYPE C REC., R/A, SMT AND DIP |
| chr | | KENNY TAI | 2015-09-21 | TAILS, FOR ANGLED OPENING CASE |
| appd | | PM ZHENG | 2015-10-06 | scale |
| sheet | | revision | A | A |
| index | | sheet | 1 | 2 |

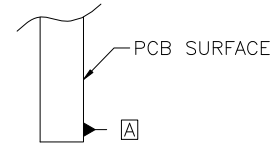


dwg no 10137066 sheet 1 of 2 size A4
type CUSTOMER Drawing

PRODUCT NUMBER
SEE PART NO. SCHEME



RECOMMENDED PCB LAYOUT
TOLERANCE ±0.05



| PIN | SIGNAL NAME | PIN | SIGNAL NAME |
|-----|-------------|-----|-------------|
| A1 | GND | B12 | GND |
| A2 | SSTXp1 | B11 | SSRXp1 |
| A3 | SSTXn1 | B10 | SSRXn1 |
| A4 | VBUS | B9 | VBUS |
| A5 | CC1 | B8 | SBU2 |
| A6 | Dp1 | B7 | Dn2 |
| A7 | Dn1 | B6 | Dp2 |
| A8 | SBU1 | B5 | CC2 |
| A9 | VBUS | B4 | VBUS |
| A10 | SSRXn2 | B3 | SSTXn2 |
| A11 | SSRXp2 | B2 | SSTXp2 |
| A12 | GND | B1 | GND |

NOTES :

- ELECTRICAL :
 - CONTACT CURRENT RATING :
5.0A FOR VBUS AND GND.
(i.e., Pins A4,A9,B4,B9)
1.25A FOR Vconn AND GND.
(i.e., Pins B5,A1,A12,B1,B12)
0.25A FOR ALL THE OTHERS CONTACTS.
 - INSULATION RESISTANCE :
100 MEGAOHMS MIN. AT 250VDC.
 - DIELECTRIC WITHSTANDING VOLTAGE :
100VAC MIN.
 - LOW LEVEL CONTACT RESISTANCE :
INITIAL 40mΩ MAX.
AFTER 50mΩ MAX.

2. MECHANICAL CHARACTERISTICS :

- INSERTION FORCE :
5N~20N .
- EXTRACTION FORCE :
8N~20N FROM 1 TO 1000 CYCLES
6~20N FROM 1001 TO 10000 CYCLE.
- DURABILITY :
10,000 MATING CYCLES.
- OPERATING TEMPERATURE :
-55°C TO +85°C

3. CAPABLE TO 260°C REFLOW SOLDER FOR 10 SEC.

4. PRODUCT SPECIFICATION: GS-12-1336

5. PACKAGE SPECIFICATION: GS-14-2487

PART NUMBER SCHEME:
10137066-000 X X LF

CONTACT PLATING
1. GOLD FLASH
2. 30u" Au

PACKAGING
1. TAPE AND REEL

| | | | | | | | | | |
|-------------|--|---|--|-----------|--|------------|--|--|--|
| mat'l. code | | surface <input checked="" type="checkbox"/> | | tolerance | | projection | | product family | |
| ltr | | ecn no | | date | | | | USB | |
| | | | | | | | | title | |
| | | | | | | | | USB 3.1 TYPE C REC., R/A, SMT AND DIP TAILS, FOR ANGLED OPENING CASE | |
| | | | | | | scale | | dwg no | |
| | | | | | | | | sheet 2 of 2 | |
| | | | | | | | | size | |
| | | | | | | | | A4 | |
| | | | | | | | | type | |
| | | | | | | | | CUSTOMER Drawing | |
| sheet index | | revision sheet | | A A | | | | | |
| | | | | 1 2 | | | | | |