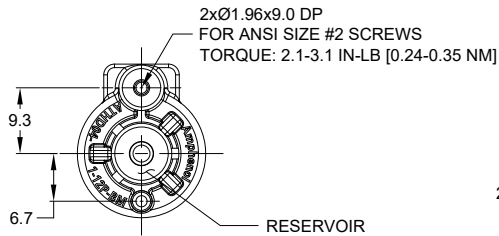
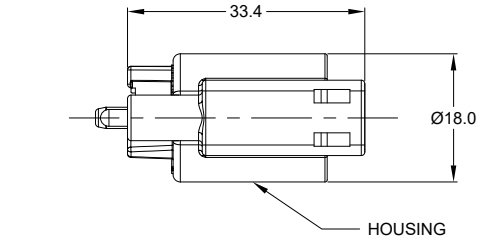


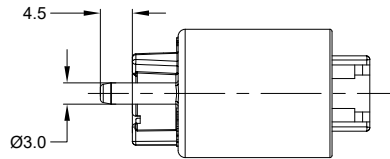
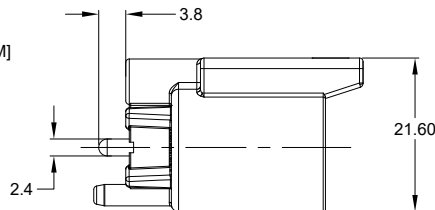
RECOMMENDED PCB LAYOUT



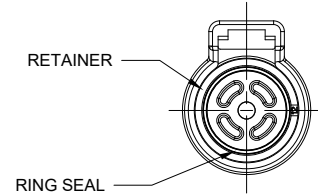
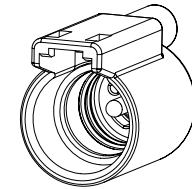
RESERVOIR



HOUSING



| REVISIONS | | | | | |
|-----------|-----|------------------|-----------|------|-------|
| REV | ECO | DESCRIPTION | DATE | BY | APPR |
| A1 | - | RELEASED DRAWING | JAN-04-22 | VITO | TOMMY |



| ATHD04-1-12P-BM1X VARIANTS | | | |
|----------------------------|-----------------------------|-------------------|----------------|
| CONTACT PLATING | POTTING OR NOT IN RESERVOIR | PART NUMBER | WEIGHT (GRAMS) |
| GOLD | NO POTTING | ATHD04-1-12P-BM11 | 6.7 |
| GOLD | POTTING | ATHD04-1-12P-BM12 | 7.8 |
| TIN | NO POTTING | ATHD04-1-12P-BM13 | 6.7 |
| TIN | POTTING | ATHD04-1-12P-BM14 | 7.8 |

NOTES: UNLESS OTHERWISE SPECIFIED

- MATERIAL:
HOUSING, RETAINER: THERMOPLASTIC; COLOR: BLACK
CONTACT: COPPER ALLOY
SEAL: SILICONE RUBBER
- MODIFICATIONS: BOARD MOUNT, SCREW BOSS
- SPECIFICATIONS:
3.1 CURRENT RATING: 25 AMPS
3.2 OPERATING TEMPERATURE: -55°C TO +125°C
3.3 DIELECTRIC WITHSTANDING VOLTAGE: LESS THAN 2 MILLIAMPS CURRENT LEAKAGE @ 1500 VOLTS AC.
3.4 INSULATION RESISTANCE: 1000 MEGOHMS MIN @ 25°C.
3.5 MOISTURE RESISTANCE:
IP68 (IM OF WATER FOR A PERIOD OF 24 HOURS, MATED CONDITION);
IP69K (MATED CONDITION)
3.6 MATING CYCLE DURABILITY: 100 CYCLES
3.7 RoHS COMPLIANT
- MATING PART: ATHD06-1-12S-XX PLUG (XX = MODIFICATIONS)
- ALL DIMENSIONS ARE FOR REFERENCE USE ONLY.

| ATHD04-1-12P-BM1X | | PART NUMBER | | DESCRIPTION | | ITEM |
|---------------------------------------|--|--|------|-------------------|--------------|--|
| QUANTITY | | | | | | |
| MATERIALS LIST | | | | | | |
| UNLESS OTHERWISE SPECIFIED | | | | | | |
| 1) All dimensions are in metric (mm). | | | | | | |
| 2) Tolerances are as follows: | | | | | | |
| 1 PL DEC ±0.30 Fractions ±1/64 | | | | | | |
| 2 PL DEC ±0.15 Angles ±1° | | | | | | |
| 3) Note reference = | | | | | | |
| MATERIAL SPECIFICATIONS: | | SIGNATURES | | DATE | | <p style="text-align: center;">Amphenol</p> <p style="text-align: center;">Sine Systems - www.amphenol-sine.com 44724 Morley Drive Clinton Township, MI 48036</p> <p style="text-align: center;">SINGLE POLE, RECEPTACLE, PIN, SIZE 12, BOARDLOCK ATHD SERIES, SCREW BOSS</p> |
| PROCESS SPECIFICATIONS: | | DRAWN: VITO LI | | JAN-04-22 | | |
| NEXT ASSY: | | CHECKED: ORION LI | | JAN-05-22 | | |
| | | ENGINEER: TOMMY XIE | | JAN-06-22 | | |
| | | APPROVAL: TOMMY XIE | | JAN-06-22 | | |
| | | CUSTOMER: | | | | |
| | | THIS DRAWING IS SUPPLIED FOR INFORMATION ONLY. DESIGN FEATURES, SPECIFICATIONS AND PERFORMANCE DATA SHOWN HEREON ARE THE PROPERTY OF THE AMPHENOL CORPORATION. NO RIGHTS OF REPRODUCTION ARE IMPLIED. ALL DIMENSIONS ARE SUBJECT TO NORMAL MANUFACTURING VARIATIONS. | | | | |
| | | SIZE | TYPE | DWG NO. | REVISION | |
| | | B | C- | ATHD04-1-12P-BM1X | A1 | |
| | | SCALE | NONE | | SHEET 1 OF 1 | |

TITLE: SINGLE POLE RECEPTACLE, PIN, SIZE 12, BOARDLOCK ATHD SERIES, SCREW BOSS | DWG NO.: ATHD04-1-12P-BM1X | REV: A1 | SH: 1 | OF: 1