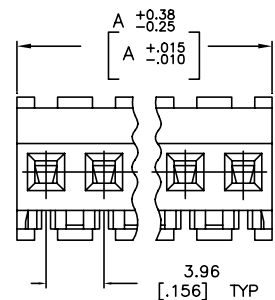
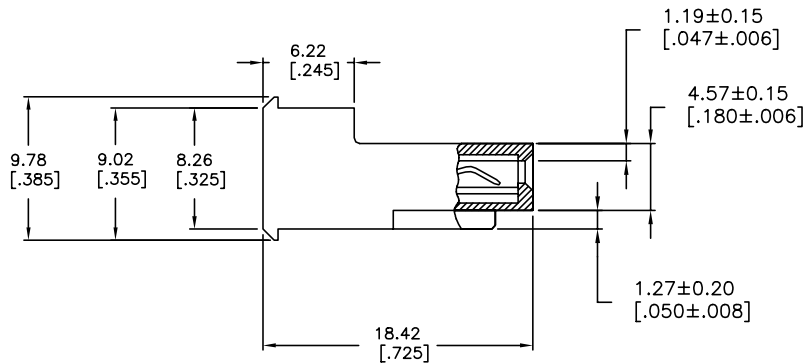
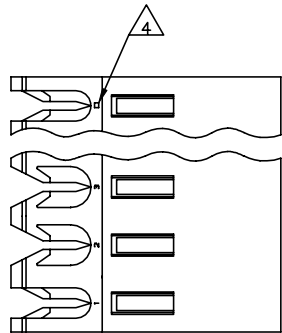


THIS DRAWING IS UNPUBLISHED. RELEASED FOR PUBLICATION
 © COPYRIGHT - By - TE CONNECTIVITY ALL RIGHTS RESERVED.

LOC	DIST	REVISIONS					
CM	54	P	LTR	DESCRIPTION	DATE	DWN	APVD
		V		REVISED PER ECR-20-000814	26MAY2020	PC	SW



DIM A	NO OF CIRCUITS	PART NO	
95.10	[3.744]	24	5-640604-4
91.14	[3.588]	23	5-640604-3
87.17	[3.432]	22	5-640604-2
83.21	[3.276]	21	5-640604-1
79.25	[3.120]	20	5-640604-0
75.29	[2.964]	19	4-640604-9
71.32	[2.808]	18	4-640604-8
67.36	[2.652]	17	4-640604-7
63.40	[2.496]	16	4-640604-6
59.44	[2.340]	15	4-640604-5
55.47	[2.184]	14	4-640604-4
51.51	[2.028]	13	4-640604-3
47.55	[1.872]	12	4-640604-2
43.59	[1.716]	11	4-640604-1
39.62	[1.560]	10	4-640604-0
35.66	[1.404]	9	3-640604-9
31.70	[1.248]	8	3-640604-8
27.74	[1.092]	7	3-640604-7
23.77	[.936]	6	3-640604-6
19.81	[.780]	5	3-640604-5
15.85	[.624]	4	3-640604-4
11.89	[.468]	3	3-640604-3
7.92	[.312]	2	3-640604-2
95.10	[3.744]	24	2-640604-4
91.14	[3.588]	23	2-640604-3
87.17	[3.432]	22	2-640604-2
83.21	[3.276]	21	2-640604-1
79.25	[3.120]	20	2-640604-0
75.29	[2.964]	19	1-640604-9
71.32	[2.808]	18	1-640604-8
67.36	[2.652]	17	1-640604-7
63.40	[2.496]	16	1-640604-6
59.44	[2.340]	15	1-640604-5
55.47	[2.184]	14	1-640604-4
51.51	[2.028]	13	1-640604-3
47.55	[1.872]	12	1-640604-2
43.59	[1.716]	11	1-640604-1
39.62	[1.560]	10	1-640604-0
35.66	[1.404]	9	640604-9
31.70	[1.248]	8	640604-8
27.74	[1.092]	7	640604-7
23.77	[.936]	6	640604-6
19.81	[.780]	5	640604-5
15.85	[.624]	4	640604-4
11.89	[.468]	3	640604-3
7.92	[.312]	2	640604-2

- 1 MATERIAL: CONNECTOR - NYLON UL94V-2 (ORANGE).
CONTACTS - 0.30[.012] THICK COPPER ALLOY (BRIGHT TIN-LEAD 0.00203[.000080] MIN. THICK FOR CONTACTS 640604-2 THRU 2-640604-4) (MATTE WHISKER MITIGATED TIN 0.00203[.000080] MIN THICKNESS OVER NICKEL UNDERPLATE FOR CONTACTS 3-640604-2 THRU 5-640604-4).
- 2 CONTACTS ACCEPT 18 AWG WIRE WITH 2.41[.095] MAX INSULATION DIAMETER.
- 3 CONTACTS MUST ACCEPT 1.14±0.03[.045±.001] SQUARE POST AND REMAIN LOCKED IN POSITION.
- 4 IDENTIFICATION NUMBER FOR LAST CIRCUIT MAY NOT APPEAR ON ALL ASSEMBLIES.
- 5 DIMENSIONS IN BRACKETS ARE IN INCHES.
- 6 HOUSING FEATURES ARE: FEED-THRU WITHOUT LOCKING RAMP.
- 7 OBSOLETE PARTS: OBSOLETE CIS STREAMLINING PER D.RENAUD/D.SINISI
- 8 OBSOLETE PARTS

THIS DRAWING IS A CONTROLLED DOCUMENT.

DRW: B. LEWIS 12FEB91
 CHK: R. SWING 12FEB91
 APVD: D. CLARK 19FEB91

TE Connectivity
 MTA-156 CONNECTOR ASSEMBLY, 18 AWG, STANDARD

DIMENSIONS: mm [INCHES]
 TOLERANCES UNLESS OTHERWISE SPECIFIED:
 0 PLC ± -
 1 PLC ± -
 2 PLC ± -
 3 PLC ± 0.13 [0.005]
 4 PLC ± -
 ANGLES ± -

MATERIAL: 1
 FINISH: 1

SIZE: A2
 CAGE CODE: 00779
 DRAWING NO: 640604
 RESTRICTED TO: -

CUSTOMER DRAWING
 SCALE: 4:1
 SHEET: 1 of 1
 REV: V