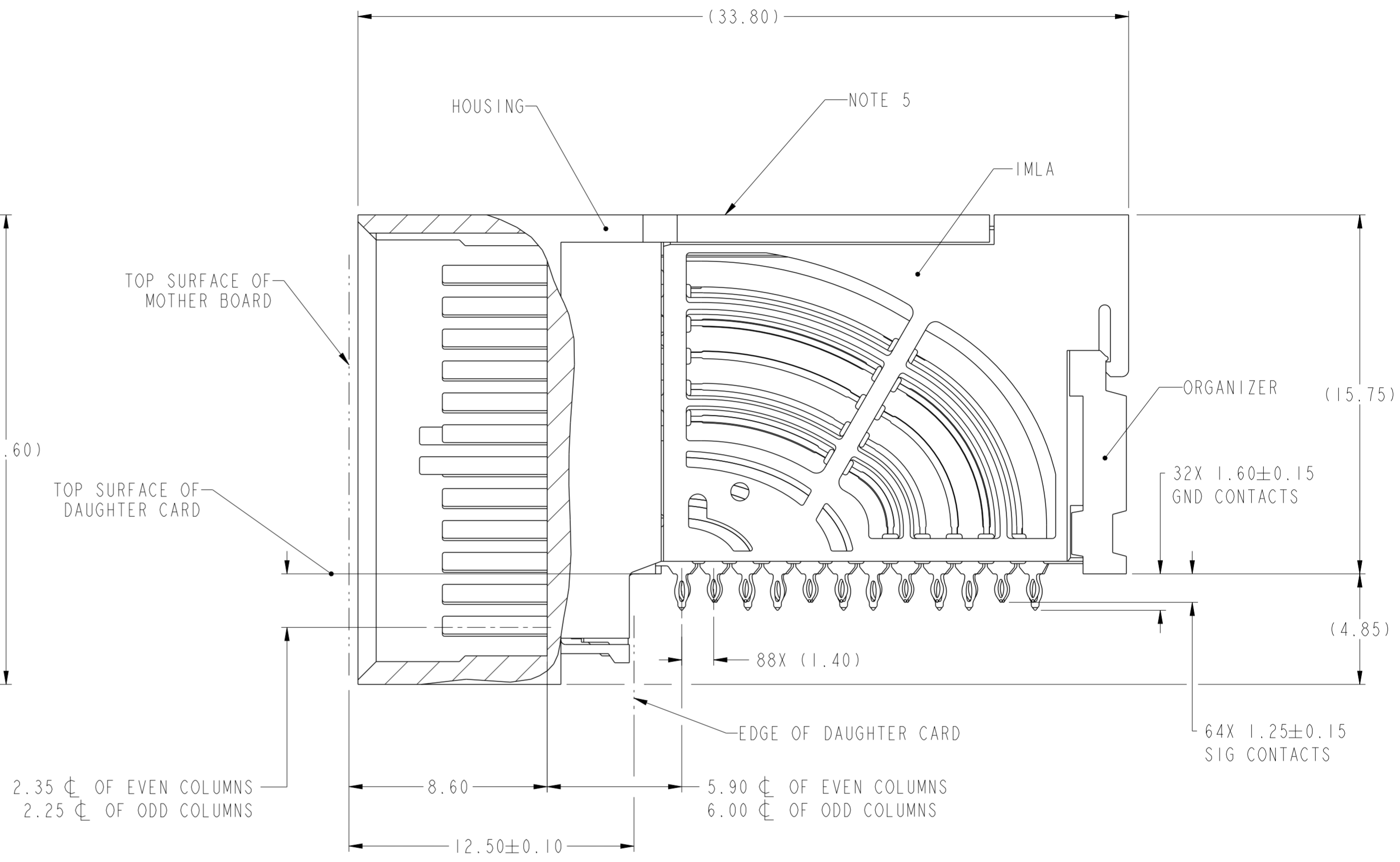
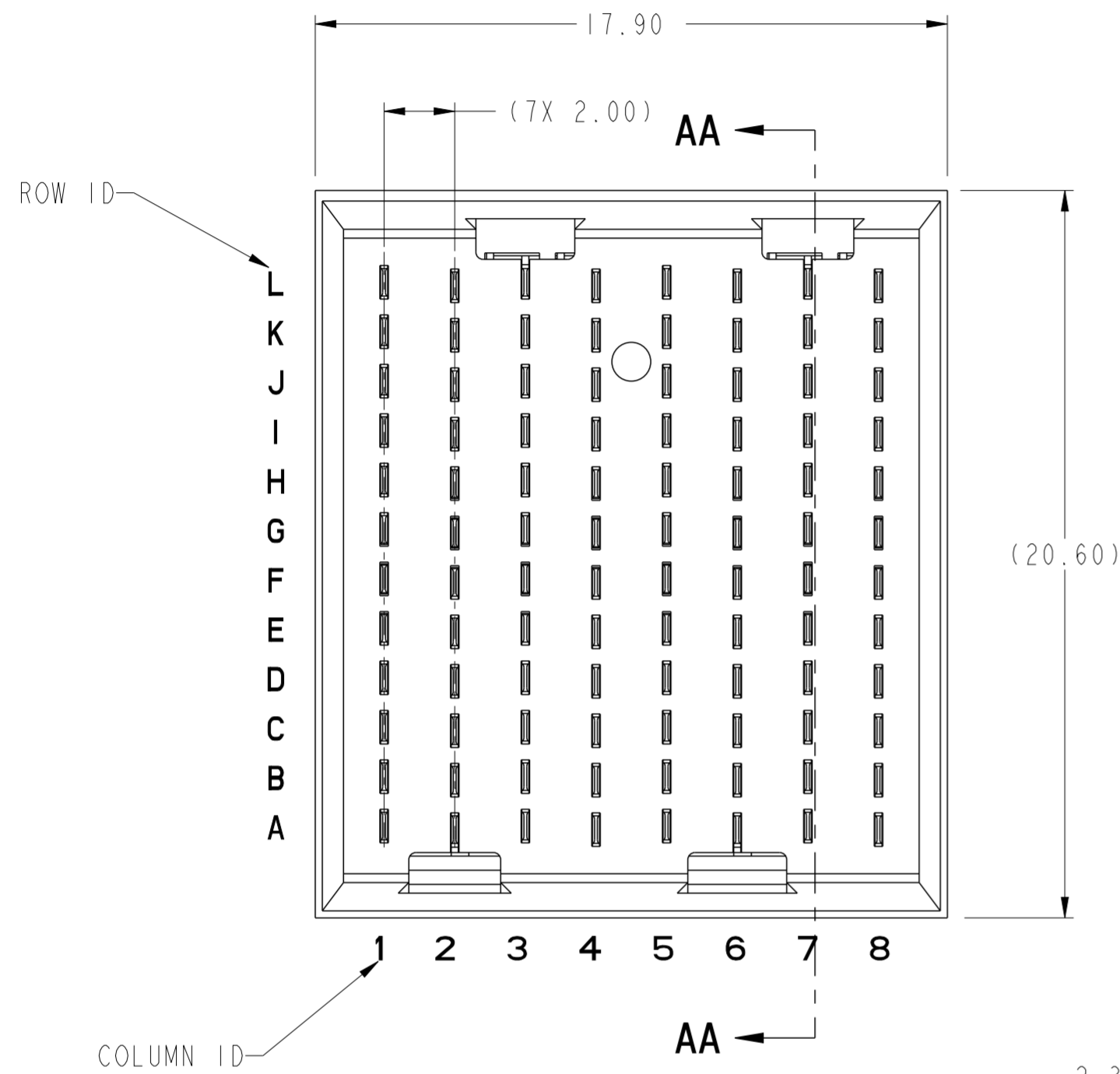


PRODUCT NUMBER
SEE SHEET 3



SECTION AA-AA

Amphenol FCI

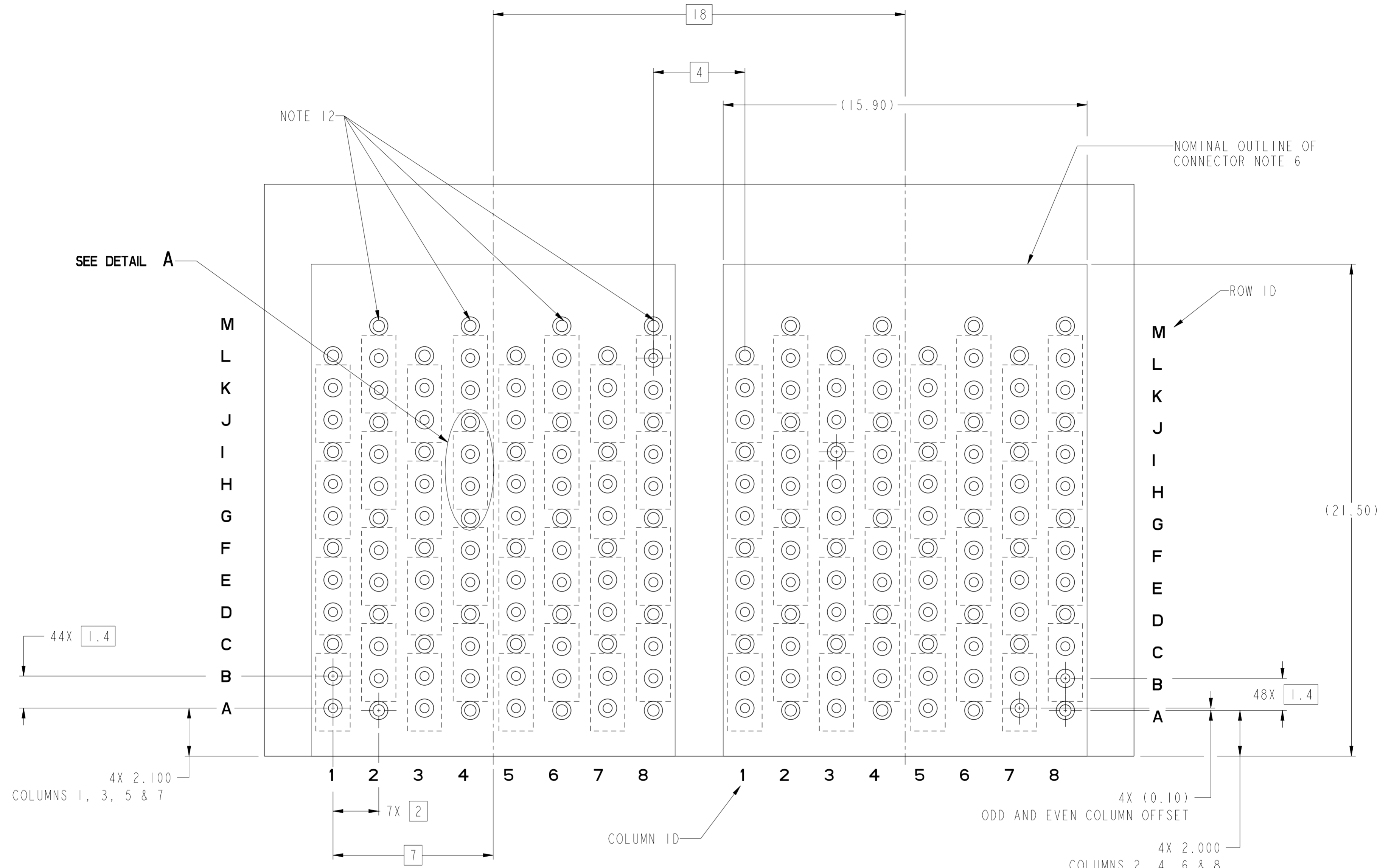
© 2016 APCI

spec ref	---	dr	Lin-Soe Ngwe	2013/04/05	projection	MM	size	A2	scale	6:1	
tolerance std	ASME Y14.5M	eng	Art Lin	2016/11/16			ecn no	ELX-DG-25255-1	rel level	Released	
TOLERANCES UNLESS OTHERWISE SPECIFIED		chr	Heaven Cen	2016/11/17							
		appr	Pai-Ming Zheng	2016/11/18							
surface	linear	0.X	±.3		AIRMAX VSE RA HEADER 4PAIR 96POS 2MM 8COL SMALL PRESS FIT	product family AirMax VSe	dwg no 10124864	rev D	cat. no. -	Product - Customer Drw	sheet 1 of 3
		0.XX	±.15								
		0.XXX	±.050								
	angular	0°	±2°								

PDS: Rev :D

STATUS:Released

Printed: Nov 18, 2016



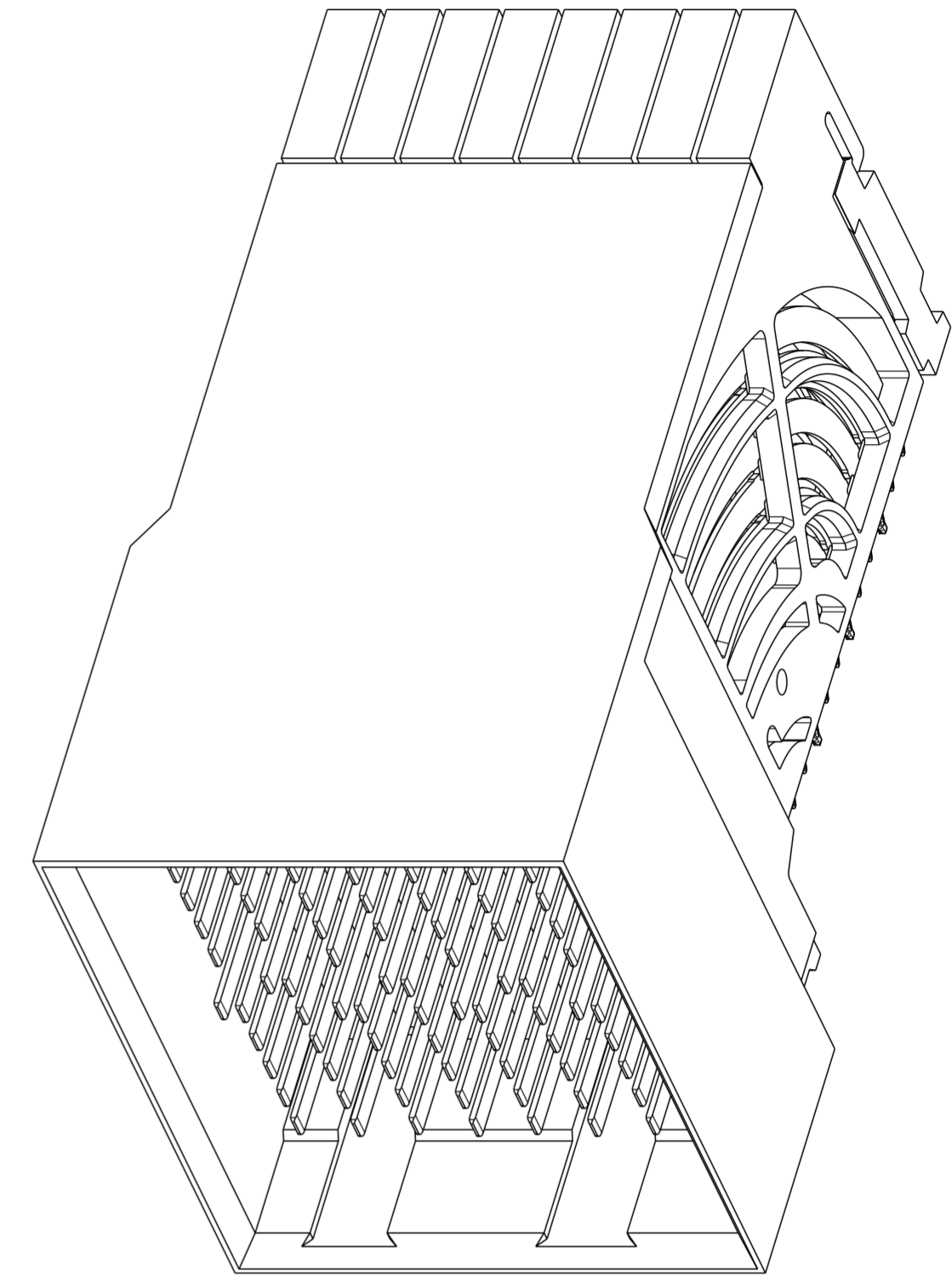
RECOMMENDED PCB LAYOUT
FOR DIFFERENTIAL APPLICATIONS
COMPONENT SIDE
(TWO ADJACENT FOOTPRINTS SHOWN)
NOTES 7 & 11

SCALE 8:1

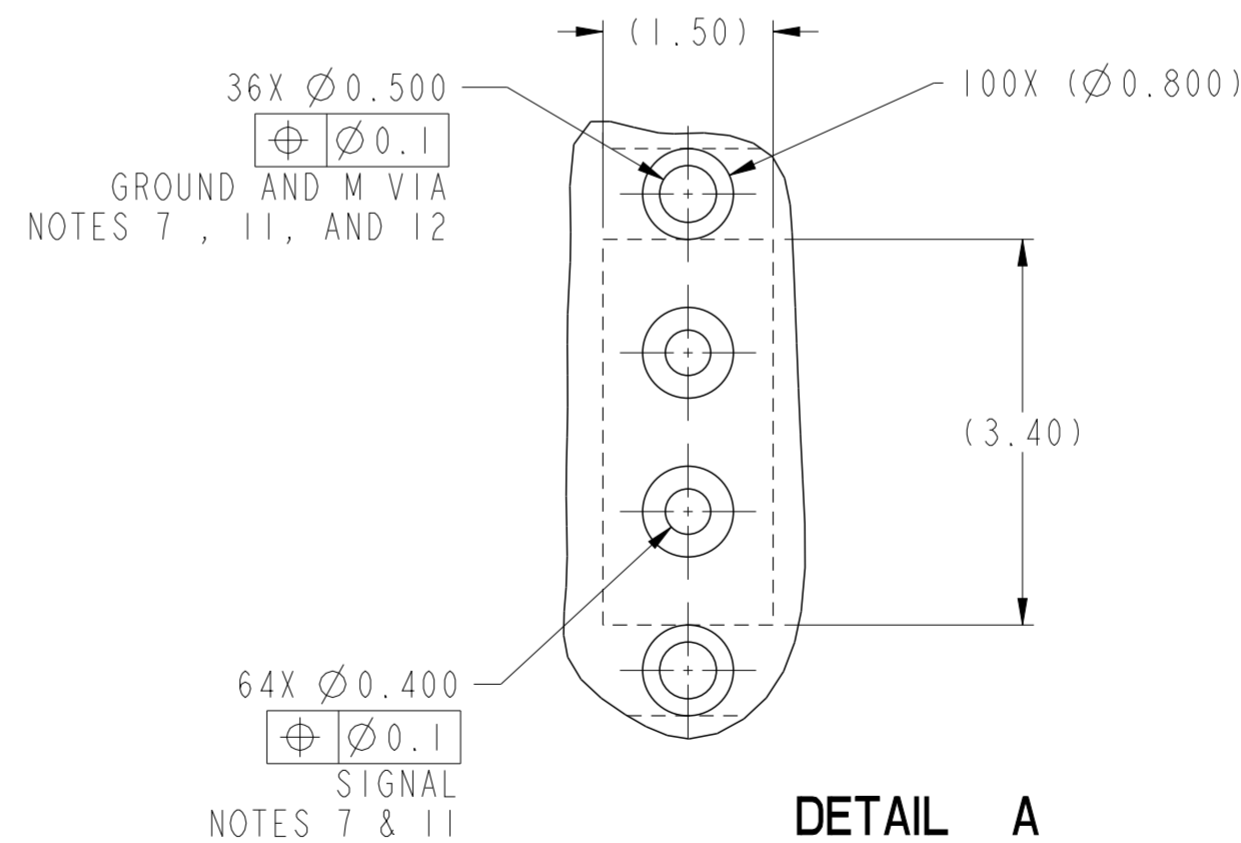
spec ref	---	dr	Lin-Soe Ngwe	2013/04/05	projection	MM	size	A2	scale	5:1	
tolerance std	ASME Y14.5M	eng	Art Lin	2016/11/16			ecn no	ELX-DG-2525-1			
TOLERANCES UNLESS OTHERWISE SPECIFIED		chr	Heaven Cen	2016/11/17			rel level	Released			
		appr	Pai-Ming Zheng	2016/11/18			product family				
surface	linear	0.X	±.3		title AIRMAX VSE RA HEADER 4PAIR 96POS 2MM 8COL SMALL PRESS FIT		dwg no	10124864			
		0.XX	±.15				rev	D			
		0.XXX	±.050				cat. no.	Product - Customer Drw			
	angular	0°	±2°			sheet 2 of 3					

PRODUCT NUMBER	PRESS-FIT TAIL PLATING TYPE
10124864-101	TIN/LEAD ALLOY OVER NICKEL
10124864-101LF	TIN OVER NICKEL (LEAD FREE)

- 1 - CONNECTOR MATERIALS:
HOUSING: HIGH TEMP THERMOPLASTIC, NATURAL, UL94-V0
IMLA PLASTIC: HIGH TEMP THERMOPLASTIC, BLACK, UL94-V0
CONTACT: COPPER ALLOY
ORGANIZER: HIGH TEMP THERMOPLASTIC, NATURAL, UL94-V0
- 2 - CONTACT PLATING:
SEPARABLE INTERFACE:
PERFORMANCE-BASED PLATING, QUALIFIED TO MEET THE REQUIREMENTS OF FCI PRODUCT SPECIFICATION GS-12-0956 INCLUDING TELCORDIA GR-1217-CORE (NOVEMBER 1995) CENTRAL OFFICE TEST SEQUENCE
- PRESS-FIT TAILS: SEE TABLE
- 3 - PRODUCT SPECIFICATION: GS-12-0956
- 4 - APPLICATION SPECIFICATION: GS-20-0305
- 5 - PRODUCT MARKING, (PROTOTYPE, PART NUMBER & LOT CODE), ON THIS SURFACE.
- 6 - CONNECTOR OUTLINE MAY BE SCREEN PRINTED ONTO CUSTOMER PCB TO BE USED AS A GUIDE FOR CONNECTOR PLACEMENT.
- 7 - REFER TO CUSTOMER DRAWING 10104444 FOR INFORMATION ON PCB HOLE DIAMETERS AND PLATING OPTIONS
- 8 - LEAD FREE PRODUCT MEETS THE EUROPEAN UNION DIRECTIVES & OTHER COUNTRY REGULATIONS AS DESCRIBED IN GS-22-008
- 9 - A \triangle SYMBOL WILL BE NEXT TO ANY DIMENSION, VIEW, OR NOTE, WHICH HAS BEEN MODIFIED WITH THE CURRENT DRAWING REVISION
- 10 - PACKAGING MEETS GS-14-920 LEAD FREE LABELING SPECIFICATION.
- 11 - GROUND CONTACTS (C, F, I & L IN ODD COLUMNS AND A, D, G & J IN EVEN COLUMNS) REQUIRE ($\varnothing 0.500$) FINISHED HOLES. SIGNAL LOCATIONS REQUIRE ($\varnothing 0.400$) FINISHED HOLES
- 12 - THESE OUTER VIAS (M) ARE OPTIONAL. WHILE NO CONNECTOR EONS ARE PRESSED INTO THESE HOLES WE RECCOMEND ($\varnothing 0.500$) FINISHED HOLES AT THESE LOCATIONS TO PROVIDE GROUND SYMMETRY THROUGH THE PCB.



10124864-101 OR -101LF



DETAIL A
SCALE 15:1

spec ref	---	dr	Lin-Soe Ngwe	2013/04/05	projection	MM	size	A2	scale	5:1
tolerance std	ASME Y14.5M	eng	Art Lin	2016/11/16			ecn no	ELX-DG-25255-1	rel level	Released
TOLERANCES UNLESS OTHERWISE SPECIFIED		chr	Heaven Cen	2016/11/17			product family	AirMax VSe		rel level
surface	linear	0.X	$\pm .3$		title		AIRMAX VSE RA HEADER	dwg no 10124864	rev D	
		0.XX	$\pm .15$		4PAIR 96POS 2MM 8COL SMALL PRESS FIT					
		0.XXX	$\pm .050$		cat. no.	-	Product - Customer Drw			sheet 3 of 3
	angular	0°	$\pm 2^\circ$	PDS: Rev :D		STATUS:Released		Printed: Nov 18, 2016		