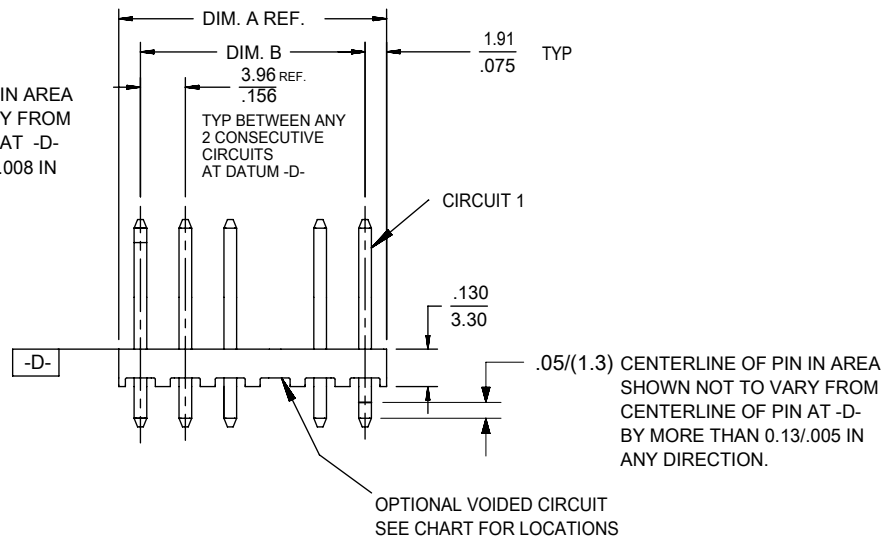




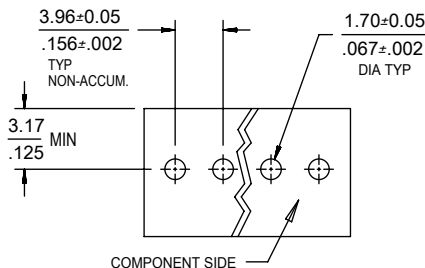
.05/(1.3) CENTERLINE OF PIN IN AREA SHOWN NOT TO VARY FROM CENTERLINE OF PIN AT -D- BY MORE THAN 0.20/.008 IN ANY DIRECTION.



CKT	DIM. A	DIM. B
2	$\frac{7.77}{.306}$	$\frac{3.96 \pm 0.05}{.156 \pm .002}$
3	$\frac{11.73}{.462}$	$\frac{7.92 \pm 0.08}{.312 \pm .003}$
4	$\frac{15.70}{.618}$	$\frac{11.89 \pm 0.08}{.468 \pm .003}$
5	$\frac{19.66}{.774}$	$\frac{15.85 \pm 0.10}{.624 \pm .004}$
6	$\frac{23.62}{.930}$	$\frac{19.81 \pm 0.10}{.780 \pm .004}$
7	$\frac{27.58}{1.086}$	$\frac{23.77 \pm 0.10}{.936 \pm .004}$
8	$\frac{31.55}{1.242}$	$\frac{27.74 \pm 0.13}{1.092 \pm .005}$
9	$\frac{35.51}{1.398}$	$\frac{31.70 \pm 0.13}{1.248 \pm .005}$
10	$\frac{39.47}{1.554}$	$\frac{35.66 \pm 0.13}{1.404 \pm .005}$
11	$\frac{43.43}{1.710}$	$\frac{39.62 \pm 0.15}{1.560 \pm .006}$
12	$\frac{47.40}{1.866}$	$\frac{43.59 \pm 0.15}{1.716 \pm .006}$
13	$\frac{51.36}{2.022}$	$\frac{47.55 \pm 0.15}{1.872 \pm .006}$
14	$\frac{55.32}{2.178}$	$\frac{51.51 \pm 0.18}{2.028 \pm .007}$
15	$\frac{59.28}{2.334}$	$\frac{55.47 \pm 0.18}{2.184 \pm .007}$
16	$\frac{63.25}{2.490}$	$\frac{59.44 \pm 0.18}{2.340 \pm .007}$

NOTES:

- MATERIAL: HEADER-GLASS FILLED POLYESTER, 94V-0, MOLDED NATURAL (WHITE).
- FINISH: (197) OVERALL REFLOWED MATTE TIN: 0.00152/.000060 MIN. OVER 0.00127/.000050 MIN. NICKEL OVERALL (222) OVERALL MATTE TIN: 0.00254/.000100 MIN TIN OVER 0.00127/.000050 MIN NICKEL. (208) SELECT GOLD: 0.00038/.000015 MIN, SELECT TIN: 0.00254/.000100 MIN, OVERALL NICKEL UNDERPLATE: 0.00127/.000050 MIN. (228) SELECT GOLD: 0.00076/.000030 MIN, SELECT TIN: 0.00254/.000100 MIN, OVERALL NICKEL UNDERPLATE: 0.00127/.000050 MIN. (241) SELECT GOLD: 0.00051/.000020 MIN. SELECT TIN: 0.00254/.000100 MIN. OVERALL NICKEL UNDERPLATE: 0.00127/.000050 MIN.
- PRODUCT SPECIFICATION: SEE PS-08-50 & PS-40-02.
- PACKAGING INFORMATION: SEE CHARTS
- SOLDERABILITY: PER SMES-152.
- PIN PUSH-OUT FORCE: 3 LB MIN PRIOR TO SOLDERING
- PARTS ARE STACKABLE END TO END ON 3.96/.156 CENTERS.
- FOR PARTS WITH PEGS, SEE DWG.NO. SDA-42491.
- PART CONFORMS TO CLASS B REQUIREMENTS OF COSMETIC SPECIFICATION PS-45499-002.



RECOMMENDED PC BOARD HOLE LAYOUT

QUALITY SYMBOLS		THIS DRAWING CONTAINS INFORMATION THAT IS PROPRIETARY TO MOLEX ELECTRONIC TECHNOLOGIES, LLC AND SHOULD NOT BE USED WITHOUT WRITTEN PERMISSION																							
▽ = 0	CORRECT PINS	EC NO: 115161 DRWN: CSLAFTER CHK'D: MKIPPER REV APPR: FSMITH	GENERAL TOLERANCES (UNLESS SPECIFIED)		DIMENSION UNITS	SCALE																			
▽ = 0			MM	INCH	MM/IN	2:1																			
▽ = 0			4 PLACES ±	±	DRWN BY	DATE																			
▽ = 0			3 PLACES ±	± 0.01	JSCHAFFER	2003/11/03																			
▽ = 0			2 PLACES ±	± 0.015	CHK'D BY	DATE																			
▽ = 0			1 PLACES ±	± 0.38	SAMIEC	2004/03/24																			
▽ = 0			0 PLACES ±	±	APPR BY	DATE																			
▽ = 0			ANGULAR TOL ± 0.5	±	MARGULIS	2004/03/24																			
▽ = 0			DRAFT WHERE APPLICABLE MUST REMAIN WITHIN DIMENSIONS		DRAWING SIZE	THIRD ANGLE PROJECTION																			
▽ = 0					A																				
2-*	K1	<table border="1"> <tr> <td colspan="2">molex®</td> </tr> <tr> <td colspan="2">KK .156 HEADER ASSY FLAT VERT W/O PEGS</td> </tr> <tr> <td colspan="2">PRODUCT CUSTOMER DRAWING</td> </tr> <tr> <td>SERIES</td> <td>MATERIAL NUMBER</td> <td>CUSTOMER</td> </tr> <tr> <td>41771</td> <td>SEE CHART</td> <td>GENERAL MARKET</td> </tr> <tr> <td>DOCUMENT NUMBER</td> <td>DOC TYPE</td> <td>DOC PART</td> <td>SHEET NUMBER</td> </tr> <tr> <td>SD-41771-001</td> <td>PSD</td> <td>000</td> <td>1 OF *</td> </tr> </table>				molex®		KK .156 HEADER ASSY FLAT VERT W/O PEGS		PRODUCT CUSTOMER DRAWING		SERIES	MATERIAL NUMBER	CUSTOMER	41771	SEE CHART	GENERAL MARKET	DOCUMENT NUMBER	DOC TYPE	DOC PART	SHEET NUMBER	SD-41771-001	PSD	000	1 OF *
molex®																									
KK .156 HEADER ASSY FLAT VERT W/O PEGS																									
PRODUCT CUSTOMER DRAWING																									
SERIES	MATERIAL NUMBER	CUSTOMER																							
41771	SEE CHART	GENERAL MARKET																							
DOCUMENT NUMBER	DOC TYPE	DOC PART	SHEET NUMBER																						
SD-41771-001	PSD	000	1 OF *																						
1	K1																								
SHEET	REV	K1	REV																						

RELEASE STATUS	RELEASE DATE
----------------	--------------

OPTIONS	Group	A-41771-0002/0016	Group	A-41771-0899/0913	Group	A-41771-0916/0930	Group	A-41771-0036/0050
	Header No:	41770-0002/0016	Header No:	41770-0002/0016	Header No:	41770-0002/0016	Header No:	41770-0002/0016
	Pin No:	43294-0214	Pin No:	43294-0209	Pin No:	43294-0210	Pin No:	43294-0419
	Plating:	197 – TIN	Plating:	208 - GOLD	Plating:	228 – GOLD	Plating:	197 – TIN
	Pin Length L	18.29 / .720	Pin Length L	18.29 / .720	Pin Length L	18.29 / .720	Pin Length L	23.88 / .940
	Mating M	11.43 / .450	Mating M	11.43 / .450	Mating M	11.43 / .450	Mating M	16.97 / .668
	Gold Loc G	N/A	Gold Loc G	6.86 / .270	Gold Loc G	6.86 / .270	Gold Loc G	N/A
	PC Tail P	3.56 / .140	PC Tail P	3.56 / .140	PC Tail P	3.56 / .140	PC Tail P	3.61 / .142
	Tin Loc T	OVERALL	Tin Loc T	4.06 / .160	Tin Loc T	4.06 / .160	Tin Loc T	OVERALL
	Voided Ckts	NONE	Voided Ckts	NONE	Voided Ckts	NONE	Voided Ckts	NONE
	Pack Per	417710000-PK	Pack Per	417710000-PK	Pack Per	417710000-PK	Pack Per	417710000-PK
Ckts	Material No	Engineer Number	Material No	Engineer Number	Material No	Engineer Number	Material No	Engineer Number
2	26-60-2020	A-41771-0002	41771-0899	A-41771-0899	41771-0916	A-41771-0916	26-60-2021	A-41771-0036
3	26-60-2030	A-41771-0003	41771-0900	A-41771-0900	41771-0917	A-41771-0917	26-60-2031	A-41771-0037
4	26-60-2040	A-41771-0004	41771-0901	A-41771-0901	41771-0918	A-41771-0918	26-60-2041	A-41771-0038
5	26-60-2050	A-41771-0005	41771-0902	A-41771-0902	41771-0919	A-41771-0919	26-60-2051	A-41771-0039
6	26-60-2060	A-41771-0006	41771-0903	A-41771-0903	41771-0920	A-41771-0920	26-60-2061	A-41771-0040
7	26-60-2070	A-41771-0007	41771-0904	A-41771-0904	41771-0921	A-41771-0921	26-60-2071	A-41771-0041
8	26-60-2080	A-41771-0008	41771-0905	A-41771-0905	41771-0922	A-41771-0922	26-60-2081	A-41771-0042
9	26-60-2090	A-41771-0009	41771-0906	A-41771-0906	41771-0923	A-41771-0923	26-60-2091	A-41771-0043
10	26-60-2100	A-41771-0010	41771-0907	A-41771-0907	41771-0924	A-41771-0924	26-60-2101	A-41771-0044
11	26-60-2110	A-41771-0011	41771-0908	A-41771-0908	41771-0925	A-41771-0925	26-60-2111	A-41771-0045
12	26-60-2120	A-41771-0012	41771-0909	A-41771-0909	41771-0926	A-41771-0926	26-60-2121	A-41771-0046
13	26-60-2130	A-41771-0013	41771-0910	A-41771-0910	41771-0927	A-41771-0927	26-60-2131	A-41771-0047
14	26-60-2140	A-41771-0014	41771-0911	A-41771-0911	41771-0928	A-41771-0928	26-60-2141	A-41771-0048
15	26-60-2150	A-41771-0015	41771-0912	A-41771-0912	41771-0929	A-41771-0929	26-60-2151	A-41771-0049
16	26-60-2160	A-41771-0016	41771-0913	A-41771-0913	41771-0930	A-41771-0930	26-60-2161	A-41771-0050

REV:	<u>ECM NFORMATION:</u>		<u>TITLE:</u>			<u>SHEET No.</u>
K1	ECM No.: 115161		KK 156 HEADER ASSY FLAT VERT W/O PEGS			- 2 -
	DATE: 4/5/2017					
<u>DOCUMENT NUMBER:</u>	<u>DOC TYPE:</u>	<u>DOC PART:</u>	<u>CREATED / REVISED BY:</u>	<u>CHECKED BY:</u>	<u>APPROVED BY:</u>	
SD- 41771-001	PSD	002	CSLAFATER	MKIPPER	FSMITH	

Group	A-41771-0933/0947	Group	A-41771-0950/0964	Group	A-41771-0019/0033	Group	A-41771-0053/0067	
Header No:	41770-0002/0016	Header No:	41770-0002/0016	Header No:	41770-0002/0016	Header No:	41770-0002/0016	
Pin No:	43294-0416	Pin No:	43294-0417	Pin No:	43294-0215	Pin No:	43294-0420	
Plating:	208 – GOLD	Plating:	228 – GOLD	Plating:	241 – GOLD	Plating:	241 – GOLD	
Pin Length L	23.88 / .940	Pin Length L	23.88 / .940	Pin Length L	18.29 / .720	Pin Length L	23.88 / .940	
Mating M	16.89 / .665	Mating M	16.89 / .665	Mating M	11.43 / .450	Mating M	16.97 / .668	
Gold Loc G	8.89 / .350	Gold Loc G	8.89 / .350	Gold Loc G	6.85/ .270	Gold Loc G	8.89/ .350	
PC Tail P	3.68 / .145	PC Tail P	3.68 / .145	PC Tail P	3.56 / .140	PC Tail P	3.61 / .142	
Tin Loc T	4.06 / .160	Tin Loc T	4.06 / .160	Tin Loc T	4.06/ .160	Tin Loc T	4.06/ .160	
Voided Ckts	NONE	Voided Ckts	NONE	Voided Ckts	NONE	Voided Ckts	NONE	
Pack Per	417710000-PK	Pack Per	417710000-PK	Pack Per	417710000-PK	Pack Per	417710000-PK	
Ckts	Material No	Engineer Number	Material No	Engineer Number	Material No	Engineer Number	Material No	Engineer Number
2	41771-0933	A-41771-0933	41771-0950	A-41771-0950	26-61-2020	A-41771-0019	26-61-2021	A-41771-0053
3	41771-0934	A-41771-0934	41771-0951	A-41771-0951	26-61-2030	A-41771-0020	26-61-2031	A-41771-0054
4	41771-0935	A-41771-0935	41771-0952	A-41771-0952	26-61-2040	A-41771-0021	26-61-2041	A-41771-0055
5	41771-0936	A-41771-0936	41771-0953	A-41771-0953	26-61-2050	A-41771-0022	26-61-2051	A-41771-0056
6	41771-0937	A-41771-0937	41771-0954	A-41771-0954	26-61-2060	A-41771-0023	26-61-2061	A-41771-0057
7	41771-0938	A-41771-0938	41771-0955	A-41771-0955	26-61-2070	A-41771-0024	26-61-2071	A-41771-0058
8	41771-0939	A-41771-0939	41771-0956	A-41771-0956	26-61-2080	A-41771-0025	26-61-2081	A-41771-0059
9	41771-0940	A-41771-0940	41771-0957	A-41771-0957	26-61-2090	A-41771-0026	26-61-2091	A-41771-0060
10	41771-0941	A-41771-0941	41771-0958	A-41771-0958	26-61-2100	A-41771-0027	26-61-2101	A-41771-0061
11	41771-0942	A-41771-0942	41771-0959	A-41771-0959	26-61-2110	A-41771-0028	26-61-2111	A-41771-0062
12	41771-0943	A-41771-0943	41771-0960	A-41771-0960	26-61-2120	A-41771-0029	26-61-2121	A-41771-0063
13	41771-0944	A-41771-0944	41771-0961	A-41771-0961	26-61-2130	A-41771-0030	26-61-2131	A-41771-0064
14	41771-0945	A-41771-0945	41771-0962	A-41771-0962	26-61-2140	A-41771-0031	26-61-2141	A-41771-0065
15	41771-0946	A-41771-0946	41771-0963	A-41771-0963	26-61-2150	A-41771-0032	26-61-2151	A-41771-0066
16	41771-0947	A-41771-0947	41771-0964	A-41771-0964	26-61-2160	A-41771-0033	26-61-2161	A-41771-0067

REV:	<u>ECM NFORMATION:</u>	<u>TITLE:</u>	<u>SHEET No.</u>
K1	ECM No.: 115161	KK 156 HEADER ASSY FLAT VERT W/O PEGS	- 3 -
	DATE: 4/5/2017		
<u>DOCUMENT NUMBER:</u>	<u>DOC TYPE:</u>	<u>DOC PART:</u>	<u>CREATED / REVISED BY:</u>
SD- 41771-001	PSD	002	CSLAFATER
			<u>CHECKED BY:</u>
			MKIPPER
			<u>APPROVED BY:</u>
			FSMITH

<table border="1"> <tr><td>Group</td><td colspan="2">A-41771-0115/0129</td></tr> <tr><td>Header No:</td><td colspan="2">41770-0002/0016</td></tr> <tr><td>Pin No:</td><td colspan="2">43294-0214</td></tr> <tr><td>Plating:</td><td colspan="2">197 – TIN</td></tr> <tr><td>Pin Length L</td><td colspan="2">18.29 / .720</td></tr> <tr><td>Mating M</td><td colspan="2">11.43 / .450</td></tr> <tr><td>Gold Loc G</td><td colspan="2">N/A</td></tr> <tr><td>PC Tail P</td><td colspan="2">3.56 / .140</td></tr> <tr><td>Tin Loc T</td><td colspan="2">OVERALL</td></tr> <tr><td>Voided Ckts</td><td colspan="2">2</td></tr> <tr><td>Pack Per</td><td colspan="2">417710000-PK</td></tr> <tr><td> </td><td colspan="2"> </td></tr> </table>			Group	A-41771-0115/0129		Header No:	41770-0002/0016		Pin No:	43294-0214		Plating:	197 – TIN		Pin Length L	18.29 / .720		Mating M	11.43 / .450		Gold Loc G	N/A		PC Tail P	3.56 / .140		Tin Loc T	OVERALL		Voided Ckts	2		Pack Per	417710000-PK					<table border="1"> <tr><td>Group</td><td colspan="2">A-41771-0195/0209</td></tr> <tr><td>Header No:</td><td colspan="2">41770-0002/0016</td></tr> <tr><td>Pin No:</td><td colspan="2">43294-1003</td></tr> <tr><td>Plating:</td><td colspan="2">197 – TIN</td></tr> <tr><td>Pin Length L</td><td colspan="2">39.62 / 1.560</td></tr> <tr><td>Mating M</td><td colspan="2">32.97 / 1.298</td></tr> <tr><td>Gold Loc G</td><td colspan="2">N/A</td></tr> <tr><td>PC Tail P</td><td colspan="2">3.35 / .132</td></tr> <tr><td>Tin Loc T</td><td colspan="2">OVERALL</td></tr> <tr><td>Voided Ckts</td><td colspan="2">NONE</td></tr> <tr><td>Pack Per</td><td colspan="2">417710000-PK</td></tr> <tr><td> </td><td colspan="2"> </td></tr> </table>			Group	A-41771-0195/0209		Header No:	41770-0002/0016		Pin No:	43294-1003		Plating:	197 – TIN		Pin Length L	39.62 / 1.560		Mating M	32.97 / 1.298		Gold Loc G	N/A		PC Tail P	3.35 / .132		Tin Loc T	OVERALL		Voided Ckts	NONE		Pack Per	417710000-PK					<table border="1"> <tr><td>Group</td><td colspan="2">A-41771-0212/0226</td></tr> <tr><td>Header No:</td><td colspan="2">41770-0002/0016</td></tr> <tr><td>Pin No:</td><td colspan="2">43294-0400</td></tr> <tr><td>Plating:</td><td colspan="2">197 – TIN</td></tr> <tr><td>Pin Length L</td><td colspan="2">23.37 / .920</td></tr> <tr><td>Mating M</td><td colspan="2">16.31/ .642</td></tr> <tr><td>Gold Loc G</td><td colspan="2">N/A</td></tr> <tr><td>PC Tail P</td><td colspan="2">3.76 / .148</td></tr> <tr><td>Tin Loc T</td><td colspan="2">OVERALL</td></tr> <tr><td>Voided Ckts</td><td colspan="2">NONE</td></tr> <tr><td>Pack Per</td><td colspan="2">417710000-PK</td></tr> <tr><td> </td><td colspan="2"> </td></tr> </table>			Group	A-41771-0212/0226		Header No:	41770-0002/0016		Pin No:	43294-0400		Plating:	197 – TIN		Pin Length L	23.37 / .920		Mating M	16.31/ .642		Gold Loc G	N/A		PC Tail P	3.76 / .148		Tin Loc T	OVERALL		Voided Ckts	NONE		Pack Per	417710000-PK					<table border="1"> <tr><td>Group</td><td colspan="2">A-41771-0229/0243</td></tr> <tr><td>Header No:</td><td colspan="2">41770-0002/0016</td></tr> <tr><td>Pin No:</td><td colspan="2">43294-0598</td></tr> <tr><td>Plating:</td><td colspan="2">197 – TIN</td></tr> <tr><td>Pin Length L</td><td colspan="2">28.70 / 1.130</td></tr> <tr><td>Mating M</td><td colspan="2">21.56 / .849</td></tr> <tr><td>Gold Loc G</td><td colspan="2">N/A</td></tr> <tr><td>PC Tail P</td><td colspan="2">3.84 / .151</td></tr> <tr><td>Tin Loc T</td><td colspan="2">OVERALL</td></tr> <tr><td>Voided Ckts</td><td colspan="2">NONE</td></tr> <tr><td>Pack Per</td><td colspan="2">417710000-PK</td></tr> <tr><td> </td><td colspan="2"> </td></tr> </table>			Group	A-41771-0229/0243		Header No:	41770-0002/0016		Pin No:	43294-0598		Plating:	197 – TIN		Pin Length L	28.70 / 1.130		Mating M	21.56 / .849		Gold Loc G	N/A		PC Tail P	3.84 / .151		Tin Loc T	OVERALL		Voided Ckts	NONE		Pack Per	417710000-PK				
Group	A-41771-0115/0129																																																																																																																																																										
Header No:	41770-0002/0016																																																																																																																																																										
Pin No:	43294-0214																																																																																																																																																										
Plating:	197 – TIN																																																																																																																																																										
Pin Length L	18.29 / .720																																																																																																																																																										
Mating M	11.43 / .450																																																																																																																																																										
Gold Loc G	N/A																																																																																																																																																										
PC Tail P	3.56 / .140																																																																																																																																																										
Tin Loc T	OVERALL																																																																																																																																																										
Voided Ckts	2																																																																																																																																																										
Pack Per	417710000-PK																																																																																																																																																										
Group	A-41771-0195/0209																																																																																																																																																										
Header No:	41770-0002/0016																																																																																																																																																										
Pin No:	43294-1003																																																																																																																																																										
Plating:	197 – TIN																																																																																																																																																										
Pin Length L	39.62 / 1.560																																																																																																																																																										
Mating M	32.97 / 1.298																																																																																																																																																										
Gold Loc G	N/A																																																																																																																																																										
PC Tail P	3.35 / .132																																																																																																																																																										
Tin Loc T	OVERALL																																																																																																																																																										
Voided Ckts	NONE																																																																																																																																																										
Pack Per	417710000-PK																																																																																																																																																										
Group	A-41771-0212/0226																																																																																																																																																										
Header No:	41770-0002/0016																																																																																																																																																										
Pin No:	43294-0400																																																																																																																																																										
Plating:	197 – TIN																																																																																																																																																										
Pin Length L	23.37 / .920																																																																																																																																																										
Mating M	16.31/ .642																																																																																																																																																										
Gold Loc G	N/A																																																																																																																																																										
PC Tail P	3.76 / .148																																																																																																																																																										
Tin Loc T	OVERALL																																																																																																																																																										
Voided Ckts	NONE																																																																																																																																																										
Pack Per	417710000-PK																																																																																																																																																										
Group	A-41771-0229/0243																																																																																																																																																										
Header No:	41770-0002/0016																																																																																																																																																										
Pin No:	43294-0598																																																																																																																																																										
Plating:	197 – TIN																																																																																																																																																										
Pin Length L	28.70 / 1.130																																																																																																																																																										
Mating M	21.56 / .849																																																																																																																																																										
Gold Loc G	N/A																																																																																																																																																										
PC Tail P	3.84 / .151																																																																																																																																																										
Tin Loc T	OVERALL																																																																																																																																																										
Voided Ckts	NONE																																																																																																																																																										
Pack Per	417710000-PK																																																																																																																																																										
CKTS	Material No	Engineer Number	Material No	Engineer Number	Material No	Engineer Number	Material No	Engineer Number																																																																																																																																																			
2	26-62-2020	A-41771-0115	26-60-2023	A-41771-0195	27-60-2021	A-41771-0212	27-60-2022	A-41771-0229																																																																																																																																																			
3	26-62-2030	A-41771-0116	26-60-2033	A-41771-0196		A-41771-0213	27-60-2032	A-41771-0230																																																																																																																																																			
4	26-62-2040	A-41771-0117	26-60-2043	A-41771-0197		A-41771-0214	27-60-2042	A-41771-0231																																																																																																																																																			
5	26-62-2050	A-41771-0118	26-60-2053	A-41771-0198		A-41771-0215	27-60-2052	A-41771-0232																																																																																																																																																			
6	26-62-2060	A-41771-0119	26-60-2063	A-41771-0199		A-41771-0216	27-60-2062	A-41771-0233																																																																																																																																																			
7	26-62-2070	A-41771-0120	26-60-2073	A-41771-0200	27-60-2071	A-41771-0217	27-60-2072	A-41771-0234																																																																																																																																																			
8	26-62-2080	A-41771-0121	26-60-2083	A-41771-0201	27-60-2081	A-41771-0218	27-60-2082	A-41771-0235																																																																																																																																																			
9	26-62-2090	A-41771-0122	26-60-2093	A-41771-0202		A-41771-0219	27-60-2092	A-41771-0236																																																																																																																																																			
10	26-62-2100	A-41771-0123	26-60-2103	A-41771-0203	27-60-2101	A-41771-0220	27-60-2102	A-41771-0237																																																																																																																																																			
11	26-62-2110	A-41771-0124	26-60-2113	A-41771-0204		A-41771-0221	27-60-2112	A-41771-0238																																																																																																																																																			
12	26-62-2120	A-41771-0125	26-60-2123	A-41771-0205	27-60-2121	A-41771-0222	27-60-2122	A-41771-0239																																																																																																																																																			
13	26-62-2130	A-41771-0126	26-60-2133	A-41771-0206		A-41771-0223	27-60-2132	A-41771-0240																																																																																																																																																			
14	26-62-2140	A-41771-0127	26-60-2143	A-41771-0207		A-41771-0224	27-60-2142	A-41771-0241																																																																																																																																																			
15	26-62-2150	A-41771-0128	26-60-2153	A-41771-0208		A-41771-0225	27-60-2152	A-41771-0242																																																																																																																																																			
16	26-62-2160	A-41771-0129	26-60-2163	A-41771-0209		A-41771-0226	27-60-2162	A-41771-0243																																																																																																																																																			

REV:	<u>ECM INFORMATION:</u>		<u>TITLE:</u>	KK 156 HEADER ASSY FLAT VERT W/O PEGS		<u>SHEET No.</u>
K1	ECM No.: 115161					- 4 -
	DATE: 4/5/2017					
<u>DOCUMENT NUMBER:</u>	<u>DOC TYPE:</u>	<u>DOC PART:</u>	<u>CREATED / REVISED BY:</u>	<u>CHECKED BY:</u>	<u>APPROVED BY:</u>	
SD- 41771-001	PSD	002	CSLAFTER	MKIPPER	FSMITH	

	Group	A-41771-0695/0709	Group	A-41771-0882/0896	Group	A-417710763/0769	Group	A-41771-0772/0778
	Header No:	41770-0002/0016	Header No:	41770-0002/0016	Header No:	41770-0002/0016	Header No:	41770-0002/0016
	Pin No:	43294-0662	Pin No:	43294-0950	Pin No:	43294-0214	Pin No:	43294-0214
	Plating:	241 - GOLD	Plating:	241 - GOLD	Plating:	197 - TIN	Plating:	197 - TIN
	Pin Length L	30.48 / 1.200	Pin Length L	38.10 / 1.500	Pin Length L	18.29 / .720	Pin Length L	18.29 / .720
	Mating M	13.49 / .531	Mating M	31.62 / 1.245	Mating M	11.43 / .450	Mating M	11.43 / .450
	Gold Loc G	6.85/ .270	Gold Loc G	7.62/ .300	Gold Loc G	N/A	Gold Loc G	N/A
	PC Tail P	13.69 / .539	PC Tail P	3.18 / .125	PC Tail P	3.84 / .140	PC Tail P	3.84 / .140
	Tin Loc T	5.08/ .200	Tin Loc T	5.08/ .200	Tin Loc T	OVERALL	Tin Loc T	OVERALL
	Voided Ckts	NONE	Voided Ckts	NONE	Voided Ckts	3, 5, 7, 8, 10	Voided Ckts	3, 10
	Pack Per	417710000-PK	Pack Per	417710000-PK	Pack Per	417710000-PK	Pack Per	417710000-PK
CKTS	Material No	Engineer Number	Material No	Engineer Number	Material No	Engineer Number	Material No	Engineer Number
2		A-41771-0695	41771-0882	A-41771-0882				
3		A-41771-0696	41771-0883	A-41771-0883				
4		A-41771-0697	41771-0884	A-41771-0884				
5	26-61-2052	A-41771-0698	41771-0885	A-41771-0885				
6		A-41771-0699	41771-0886	A-41771-0886				
7		A-41771-0700	41771-0887	A-41771-0887				
8	26-61-2082	A-41771-0701	41771-0888	A-41771-0888				
9		A-41771-0702	41771-0889	A-41771-0889				
10		A-41771-0703	41771-0890	A-41771-0890		A-41771-0763	27-66-2101	A-41771-0772
11		A-41771-0704	41771-0891	A-41771-0891	27-66-2110	A-41771-0764		A-41771-0773
12		A-41771-0705	41771-0892	A-41771-0892		A-41771-0765		A-41771-0774
13		A-41771-0706	41771-0893	A-41771-0893		A-41771-0766		A-41771-0775
14		A-41771-0707	41771-0894	A-41771-0894		A-41771-0767		A-41771-0776
15		A-41771-0708	41771-0895	A-41771-0895		A-41771-0768		A-41771-0777
16		A-41771-0709	41771-0896	A-41771-0896		A-41771-0769		A-41771-0778

REV:	<u>ECM INFORMATION:</u>		<u>TITLE:</u>			<u>SHEET No.</u>
K1	ECM No.: 115161		KK 156 HEADER ASSY FLAT VERT W/O PEGS			- 5 -
	DATE: 4/5/2017					
<u>DOCUMENT NUMBER:</u>	<u>DOC TYPE:</u>	<u>DOC PART:</u>	<u>CREATED / REVISED BY:</u>	<u>CHECKED BY:</u>	<u>APPROVED BY:</u>	
SD- 41771-001	PSD	002	CSLAFTER	MKIPPER	FSMITH	

	Group	A-41771-0781/0785	Group	A-41771-0972/0986	Group	A-41771-1007	Group	
	Header No:	41770-0002/0016	Header No:	41770-0002/0016	Header No:	41770-0003	Header No:	
	Pin No:	43294-0214	Pin No:	43294-0832	Pin No:	43294-0212	Pin No:	
	Plating:	197 – TIN	Plating:	197 – TIN	Plating:	222 – TIN	Plating:	
	Pin Length L	18.29 / .720	Pin Length L	35.05 / 1.380	Pin Length L	18.29 / .720	Pin Length L	
	Mating M	11.43 / .450	Mating M	15.93 / .627	Mating M	11.43 / .450	Mating M	
	Gold Loc G	N/A	Gold Loc G	NA	Gold Loc G	N/A	Gold Loc G	
	PC Tail P	3.84 / .140	PC Tail P	15.82 / .623	PC Tail P	3.56 / .140	PC Tail P	
	Tin Loc T	OVERALL	Tin Loc T	OVERAL	Tin Loc T	OVERALL	Tin Loc T	
	Voided Ckts	4, 12	Voided Ckts	NONE	Voided Ckts	2	Voided Ckts	
	Pack Per	417710000-PK	Pack Per	417710000-PK	Pack Per	417710000-PK	Pack Per	
CKTS	Material No	Engineer Number	Material No		Material No		Material No	Engineer Number
2			41771-0972					
3			41771-0973		41771-1007			
4			41771-0974					
5			41771-0975					
6			41771-0976					
7			41771-0977					
8			41771-0978					
9			41771-0979					
10			41771-0980					
11			41771-0981					
12	27-66-2122	A-41771-0781	41771-0982					
13		A-41771-0782	41771-0983					
14		A-41771-0783	41771-0984					
15		A-41771-0784	41771-0985					
16		A-41771-0785	41771-0986					

REV:	<u>ECM NFORMATION:</u>	<u>TITLE:</u>	<u>SHEET No.</u>
K1	ECM No.: 115161	KK 156 HEADER ASSY FLAT VERT W/O PEGS	- 6 -
	DATE: 4/5/2017		
<u>DOCUMENT NUMBER:</u>	<u>DOC TYPE:</u>	<u>DOC PART:</u>	<u>CREATED / REVISED BY:</u>
SD- 41771-001	PSD	002	CSLAFTER
			<u>CHECKED BY:</u>
			MKIPPER
			<u>APPROVED BY:</u>
			FSMITH