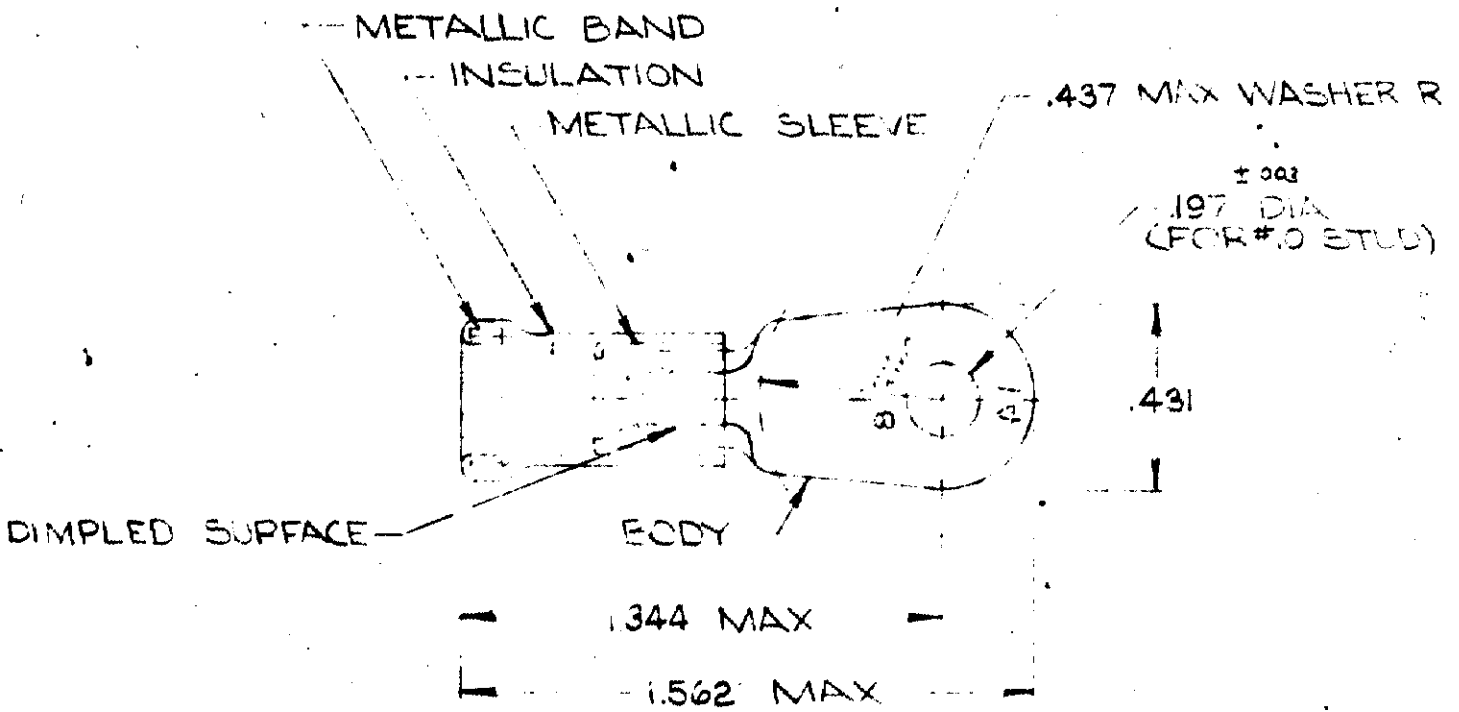


DRAWING MADE IN AMERICAN PROJECTION

LOC G PRINT DIST 14

© 1963 BY AMP INCORPORATED. ALL RIGHTS RESERVED. AMP PRODUCTS COVERED BY PATENTS AND/OR PATENTS PENDING.

REVISIONS				
LTR	DESCRIPTION	DATE	APPROVED	
A	REDRAWN & REVISED	PC-5563 1-5-70	JML	
B	REV G-4680	TMS 5-6-88	JT	



TONGUE MATERIAL THICKNESS = .040 ± .003  
 FOR .377 MAX WIRE INS. DIA

1	WIRE TERMINAL	322154	BODY: COPPER (99.95%) TIN PLATE (107%) INSULATION PVC COLOR RED METALLIC SLEEVE COPPER (99.95%) METALLIC BAND: STEEL QQ S-228 (ASTM A 29)
QTY	DESCRIPTION	PART NO	MATERIAL & FINISH

UNLESS OTHERWISE SPECIFIED DIMENSIONS ARE IN INCHES TOLERANCES ON DECIMALS ANGLES	CONTRACT NO.	<b>AMP</b> AMP INCORPORATED HARRISBURG, PENNSYLVANIA
	DR. <i>Wayne Millhous</i> 11-18-69	
MATERIAL	CHK. <i>M. E. ...</i> 1-5-70	NAME WIRE TERMINAL AMFLI-BOND-RING TONGUE WIRE SIZE: 8
SEE TABLE	APPD. <i>Swabell</i> 1-7-70	SIZE CODE IDENT NO NUMBER A 00779 322154
	REL. <i>M. E. ...</i> 1-8-70	SCALE NTS SHEET 1 OF 1
	DSCN APPD	
	OTHER APPD	