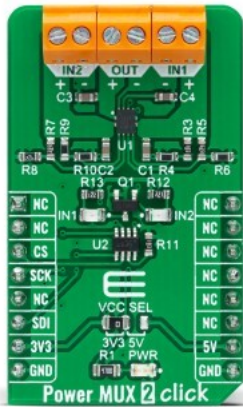


## Power MUX 2 Click



PID: MIKROE-4575

**Power MUX 2 Click** is a compact add-on board that contains a highly configurable power mux. This board features the TPS2120, a dual-input single-output power multiplexer with an automatic switchover feature from Texas Instruments. This Click board™ prioritizes the main supply when present and quickly switches to auxiliary supply when the main supply drops. During switchover, the voltage drop is controlled to block reverse current before it happens and provide uninterrupted power to the load with minimal hold-up capacitance. This Click board™ is suitable for applications as a backup and standby power, input source selection, and various systems having multiple power sources.

Power MUX 2 Click is supported by a [mikroSDK](#) compliant library, which includes functions that simplify software development. This [Click board™](#) comes as a fully tested product, ready to be used on a system equipped with the [mikroBUS™](#) socket.

Mikroe produces entire development toolchains for all major microcontroller architectures.

Committed to excellency, we are dedicated to helping engineers bring the project development up to speed and achieve outstanding results.



ISO 27001: 2013 certification of informational security management system.  
 ISO 14001: 2015 certification of environmental management system.  
 OHSAS 18001: 2008 certification of occupational health and safety management system.



ISO 9001: 2015 certification of quality management system (QMS).

## Specifications

Type	Power Switch
Applications	Can be used for applications as a backup and standby power, input source selection, and various systems having multiple power sources.
On-board modules	TPS2120 - highly configurable power mux with an automatic switchover feature from Texas Instruments TPL0501 - 256-taps digital potentiometer from Texas Instruments
Key Features	Low power consumption, automatic switchover, output current limit, uninterrupted power solution, and more.
Interface	SPI
ClickID	No
Compatibility	mikroBUS
Click board size	M (42.9 x 25.4 mm)
Input Voltage	3.3V or 5V

## Resources

[mikroBUS™](#)

[mikroSDK](#)

[Click board™ Catalog](#)

[Click Boards™](#)

## Downloads

[TPL0501 datasheet](#)

[TPS2120 datasheet](#)

[Power MUX 2 click 2D and 3D files](#)

[Power MUX 2 click schematic](#)

[Power MUX 2 click example on Libstock](#)

Mikroe produces entire development toolchains for all major microcontroller architectures.

Committed to excellency, we are dedicated to helping engineers bring the project development up to speed and achieve outstanding results.



ISO 27001: 2013 certification of informational security management system.  
 ISO 14001: 2015 certification of environmental management system.  
 OHSAS 18001: 2008 certification of occupational health and safety management system.



ISO 9001: 2015 certification of quality management system (QMS).