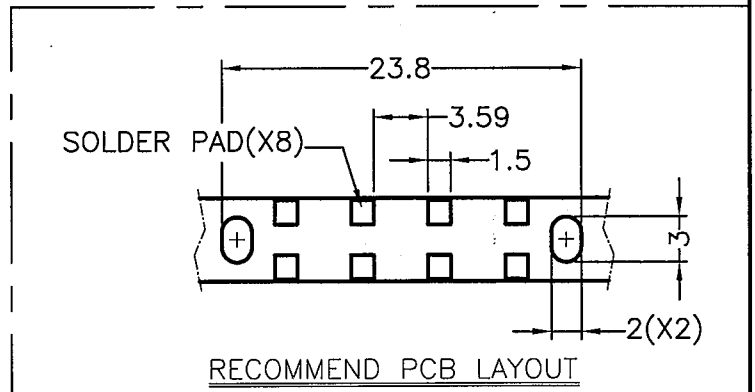


PART NO.	A	B	C
LPE4-5-18V	5	18	16
LPE4-10-24V	10	24	22

NOTE: 1. SHRINKING IS NORMAL STATUS.
 內縮屬正常現象。
 2. MADE OF EQUIVALENT MATERIAL.
 可使用同等材質。



康揚企業股份有限公司
 KANG YANG HARDWARE ENTERPRISE CO., LTD.
 康揚塑膠(東莞)有限公司
 KANG YANG PLASTIC(DONG GUAN)CO.,LTD.
 康哲電腦配件(吳江)有限公司
 KANG CHE COMPUTER COMPONENTS(WUJIANG)CO.,LTD.

PROPRIETARY AND CONFIDENTIAL THE INFORMATION CONTAINED IN THIS DRAWING IS THE SOLE PROPERTY OF KANG YANG HARDWARE ENTERPRISE CO. ANY REPRODUCTION IN PART OR AS A WHOLE WITHOUT THE WRITTEN PERMISSION OF KANG YANG HARDWARE ENTERPRISE CO. IS PROHIBITED. DO NOT SCALE DRAWING	DATE	2009.02.03	TITLE	LIGHT PIPE	DWG. NO.	LPE4-XX-XXV	PART NO.	SEE ABOVE
	DRAWN	KEN	MATERIAL	PC UL94V-0	SIZE	A4	SPEC. DWG	REV B
	CHECKED	林祺翔	COLOR	TRANSPARENT	FINISH			
	APPROVED	Kang	UNLESS OTHERWISE SPECIFIED TOLERANCE:	SEE ABOVE	SCALE:	2:1	UNIT	mm