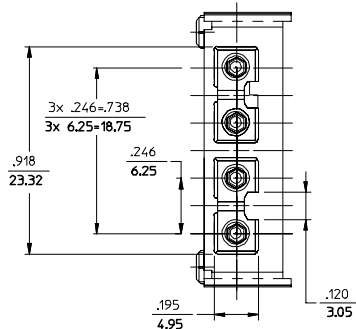
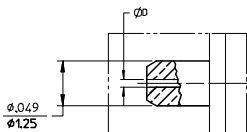


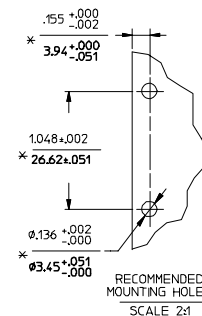
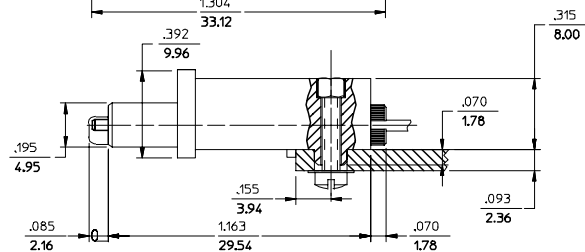
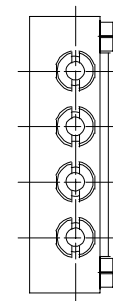
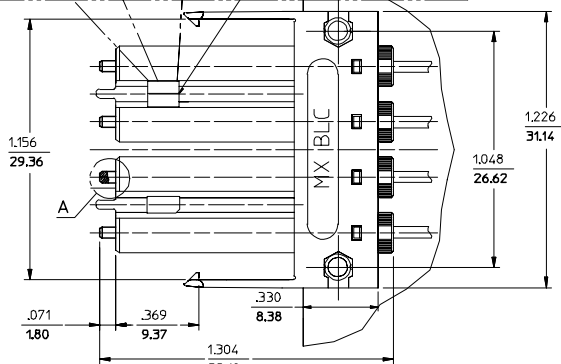
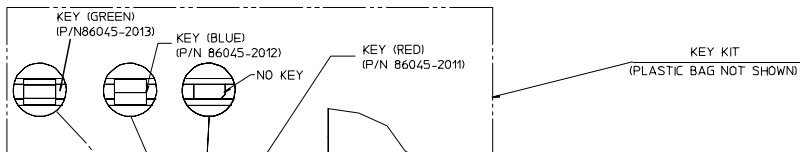
CONNECTOR P/N	ØD (H#)	CABLE TYPE
106047-2200	125.50	SINGLE MODE
106047-4200	125.00	
106047-5000	126.00	
106047-6200	125.25	



(DUST CAP NOT SHOWN)



DETAIL A  
SCALE 10:1



NOTES:

- ALL DIMENSIONS ARE FOR REFERENCE ONLY EXCEPT WHEN MARKED WITH \*.
- KEYS ARE TO BE PACKAGED UNASSEMBLED WITH CONNECTOR IN POLY BAG.

ENTER DESCRIPTION FCC NO: MF2006-0263 DRAWN: PGIBLIN CHKD: 2005/11/16 APPR: JGUMIN REVISIONS A	QUALITY SYMBOLS = 0 = 0	GENERAL TOLERANCES (UNLESS SPECIFIED)		DIMENSION STYLE IN/MM		SCALE 2.5:1	DESIGN UNITS INCH	THIRD ANGLE PROJECTION	
		4 PLACES ± --- ± --- 3 PLACES ± --- ± --- 2 PLACES ± --- ± --- 1 PLACE ± --- ± ---	mm INCH	DRAWN BY PGIBLIN	DATE 2005/10/20	TITLE BLC/APC CONNECTOR (4 POSITION)			
		ANGULAR ±1/2°		CHECKED BY	DATE	APPROVED BY			
		DRAFT WHERE APPLICABLE MUST REMAIN WITHIN DIMENSIONS		MATERIAL NO. SEE TABLE	DOCUMENT NO. SD-106047-XX00	MOLEX INCORPORATED		SHEET NO. 1 OF 01	