

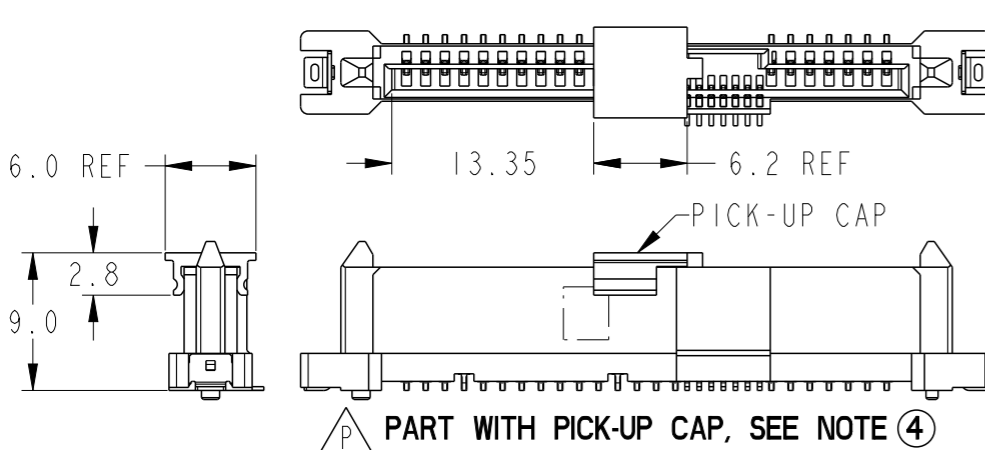
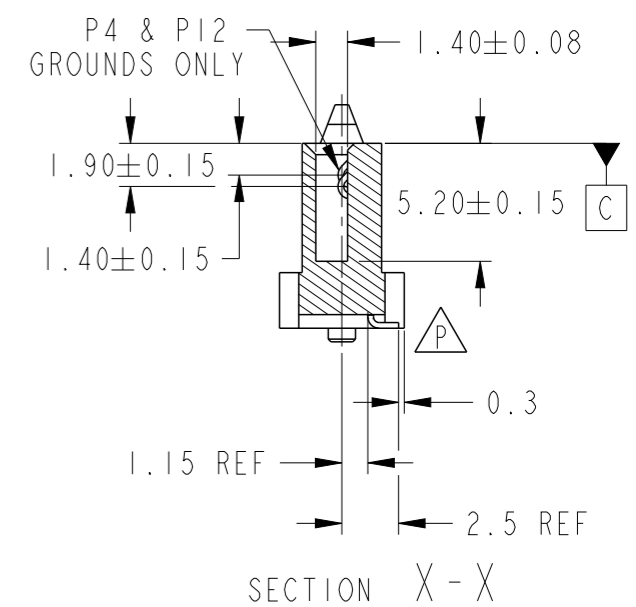
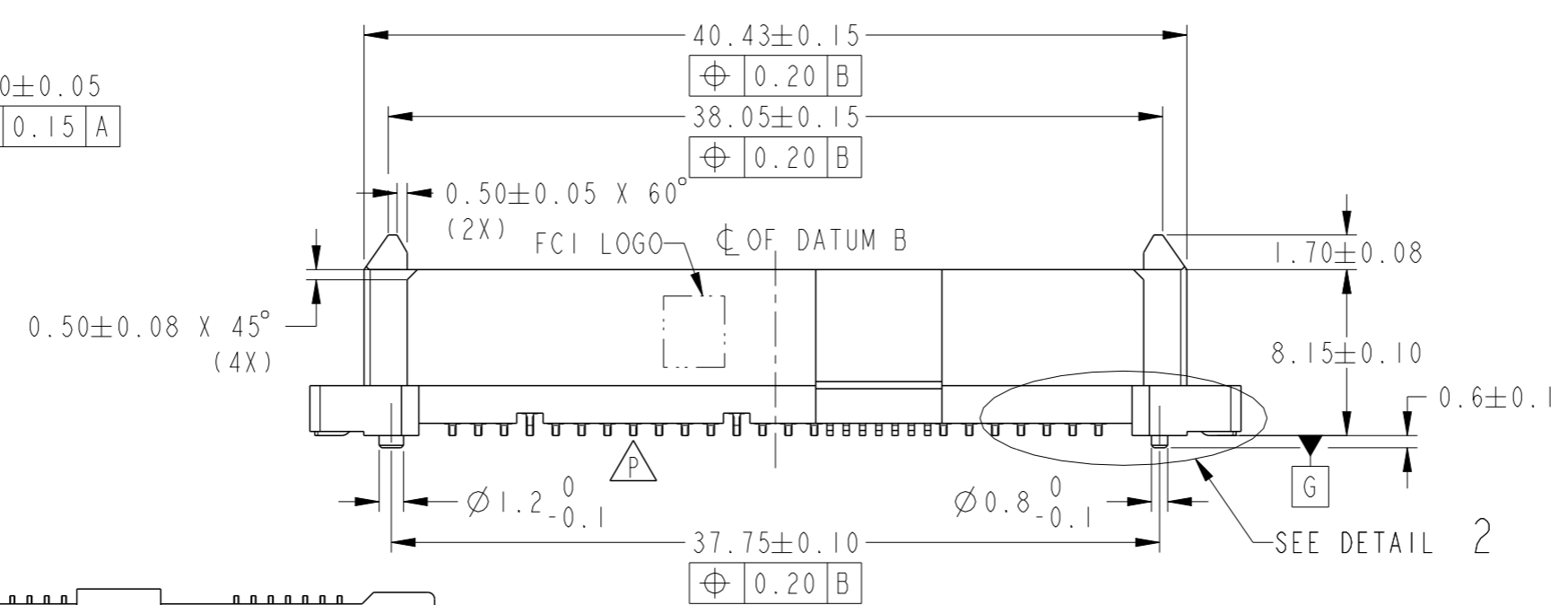
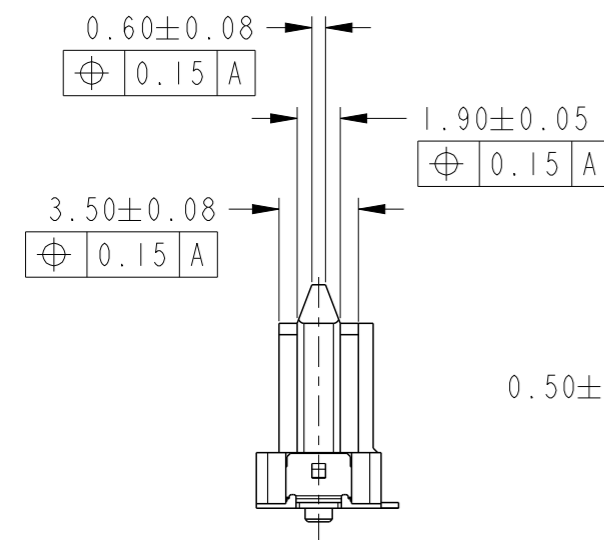
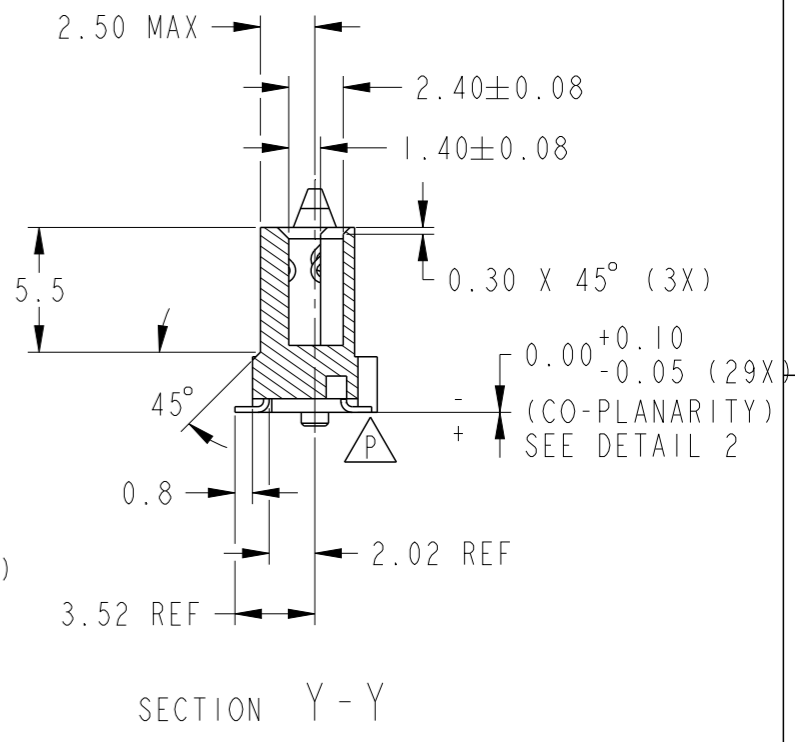
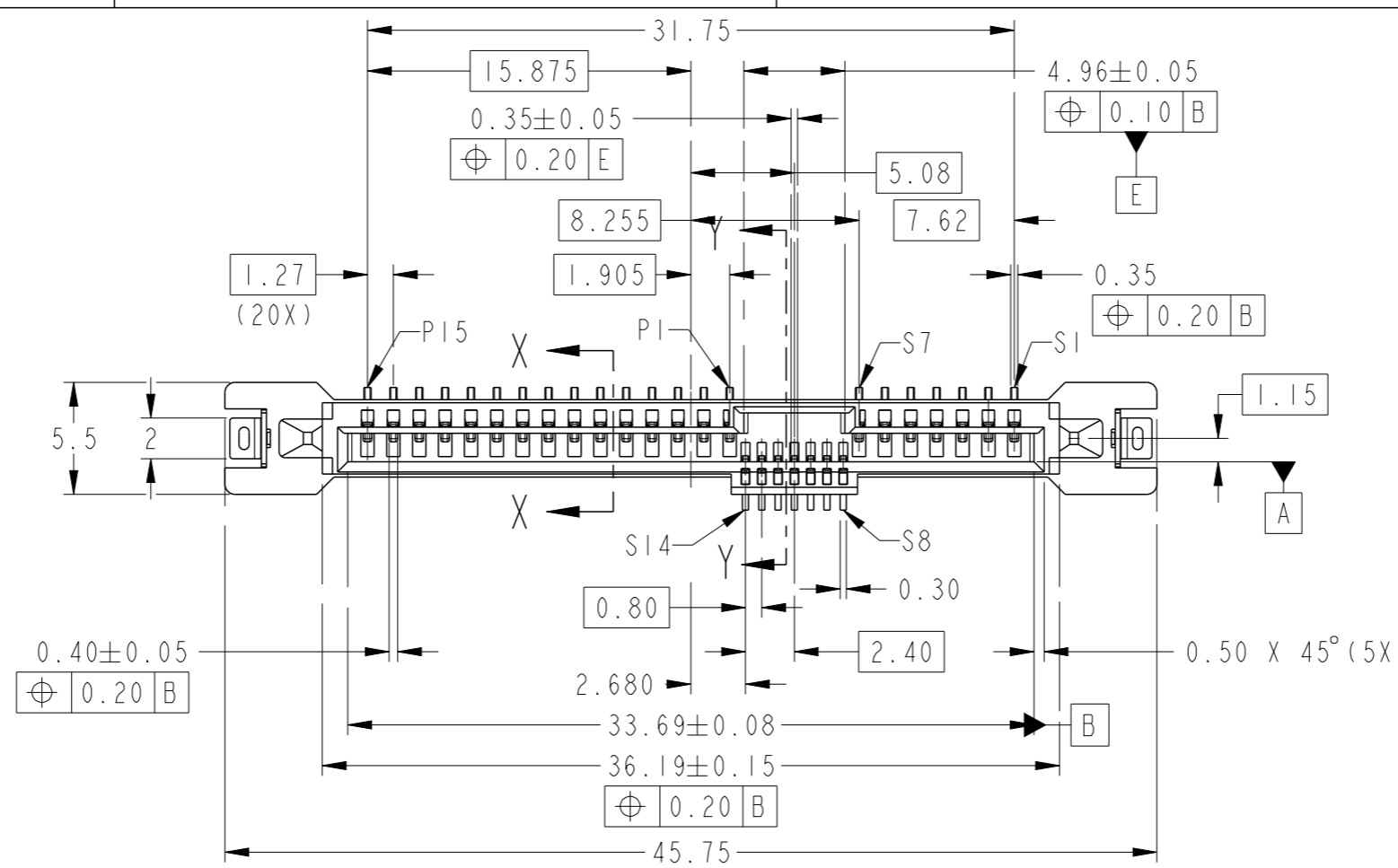
PRODUCT NO
SEE TABLE

A

B

C

D



spec ref	-	dr	Louis Ng	2011/10/03	projection	MM	size	A3	scale	1:1
tolerance std	ISO 406 ISO 1101	eng	Noorhazlinda	2017/04/21			ecn no	ELX-M-26756-1	rel level	Released
TOLERANCES UNLESS OTHERWISE SPECIFIED		chr	-	product family			SAS			
surface	linear	0.X	±	Amphenol FCI	SAS RECEPTACLE VERTICAL SMT TYPE ASSY	cat. no. -	Product - Customer Drw	sheet 1 of 3	rev P	
	angular	0.XXX	±							ISO 1302

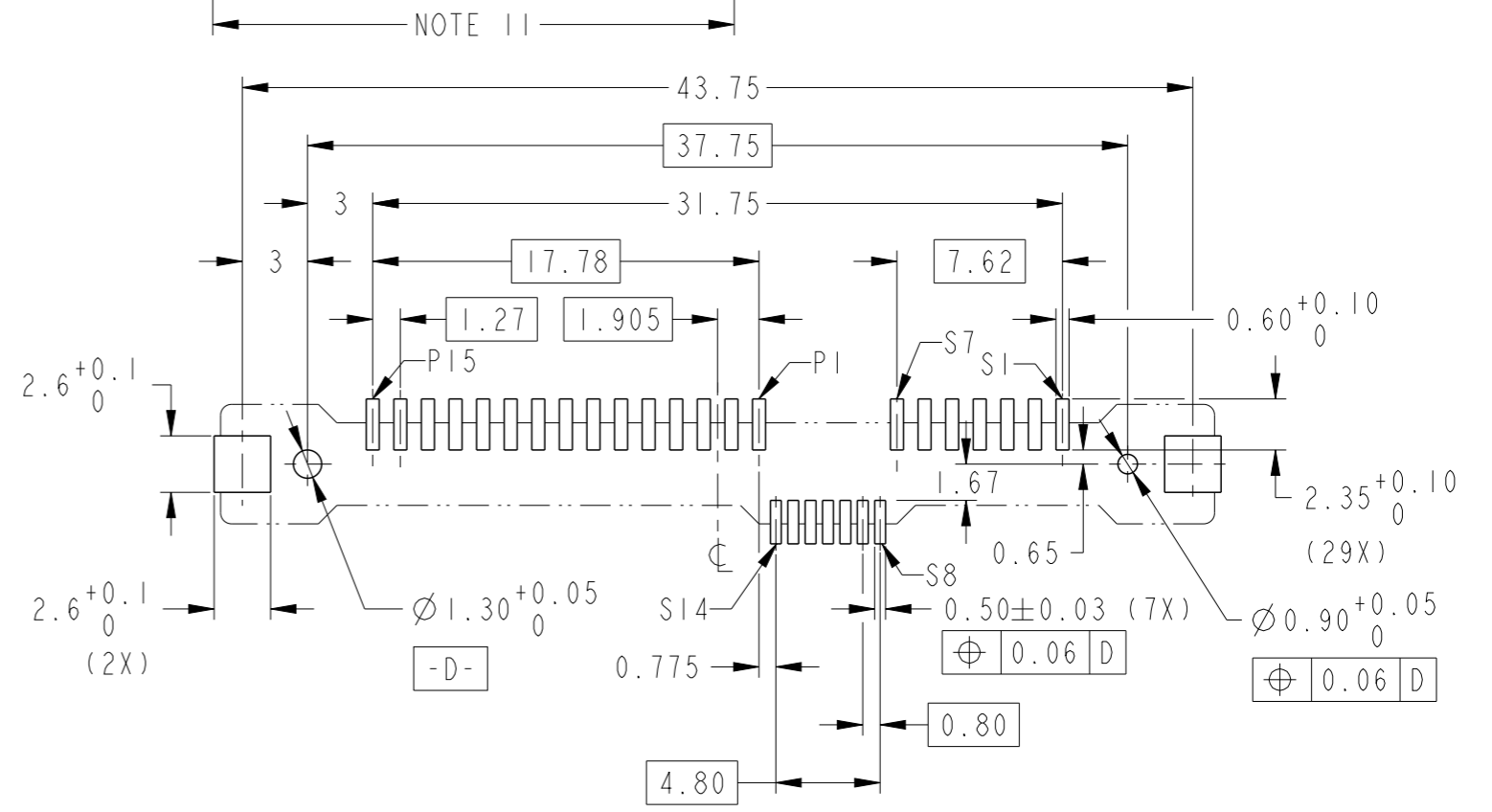
Amphenol FCI

© 2016 AFCI

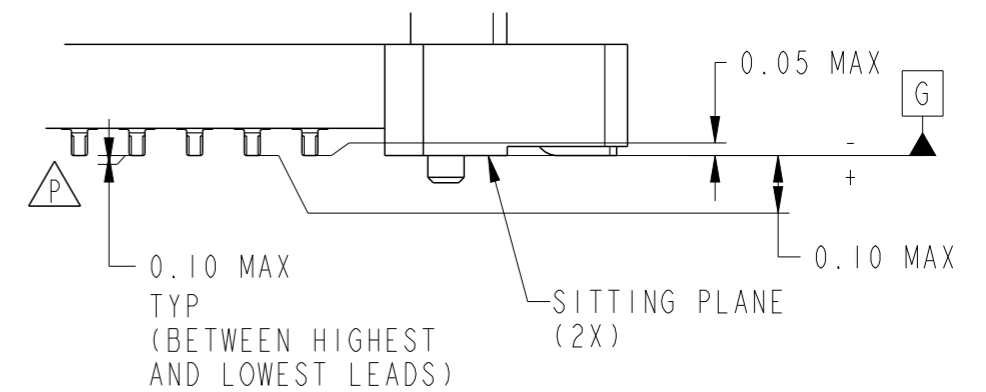
PRODUCT NO	METAL CLIP	PLATING	PICK-UP CAP	PACKAGING	REMARKS	PRODUCT NO	PLATING
10031567-001LF	2 PCS	NOTE 2	NO	TRAY	NOTE ⑧	10031567-401LF	NOTE ⑪
10031567-001CLF			YES		NOTE ④ & ⑧	10031567-401CLF	
10031567-001C-TRLF			YES	TAPE & REEL	NOTE ④ ⑥ & ⑧	10031567-401C-TRLF	

NOTES:

1. MATERIAL :
 - 1) HOUSING : HIGH TEMP THERMOPLASTIC, UL 94V-0
 - COLOR : BLACK
 - 2) TERMINAL : COPPER ALLOY
 - 3) HOLD DOWN : COPPER ALLOY
- ② FINISH :
 - 1) TERMINAL : 30μ" Au PLATING (CONTACT POINT) OVER 50μ" NICKEL
 - 2) SOLDER TAIL : 100μ" MIN Sn OVER 50μ" NICKEL
 - 3) HOLD DOWN : 100μ" MIN Sn OVER 50μ" NICKEL
3. PER SFF REV 1.1, EXCEPT 0.8mm PITCH BUMP AREA.
- ④ PART WITH PICK-UP CAP, P/N XXXXXXXX-XXXC LF.
- ⑤ THE STD PACKAGING IS IN TRAY UNLESS OTHERWISE SPECIFIED.
- ⑥ PART NUMBER WITH SUFFIX "-TR" MEANS FOR TAPE & REEL PACKAGING (E.G. P/N: XXXXXXXX-XXXC-TRLF).
7. THE HOUSING WILL WITHSTAND EXPOSURE TO 260°C PEAK TEMPERATURE FOR 10 SECONDS IN A CONVECTION, INFRA-RED OR VAPOR PHASE REFLOW OVEN.
- ⑧ THIS PRODUCT MEETS EUROPEAN UNION DIRECTIVES AND OTHER COUNTRY REGULATIONS AS DESCRIBED IN GS-22-008.
- ⑨ PART NUMBERS ENDING IN "LF" MEANS FOR NOTE 8 LEAD FREE IDENTIFICATION
 - ~~(i) XXXXXXXX-XXXLF IS EQUIVALENT TO PREVIOUS P/N XXXXXXXX-XXX~~
 - ~~(ii) XXXXXXXX-XXXCLF IS EQUIVALENT TO P/N XXXXXXXX-XXXC~~
 - ~~(iii) XXXXXXXX-XXXC-TRLF IS EQUIVALENT TO P/N XXXXXXXX-XXXC-TR~~
- ⑩ A **P** SYMBOL WILL BE NEXT TO ANY DIMENSION, VIEW, OR NOTE WHICH HAS BEEN MODIFIED WITH THE CURRENT DRAWING REVISION.
- ⑪ FINISH :
 - 1) TERMINAL : 15μ" GXT PLATING (CONTACT POINT) OVER 50μ" NICKEL
 - 2) SOLDER TAIL : 100μ" MIN Sn OVER 50μ" NICKEL
 - 3) HOLD DOWN : 100μ" MIN Sn OVER 50μ" NICKEL



RECOMMENDED PCB LAYOUT



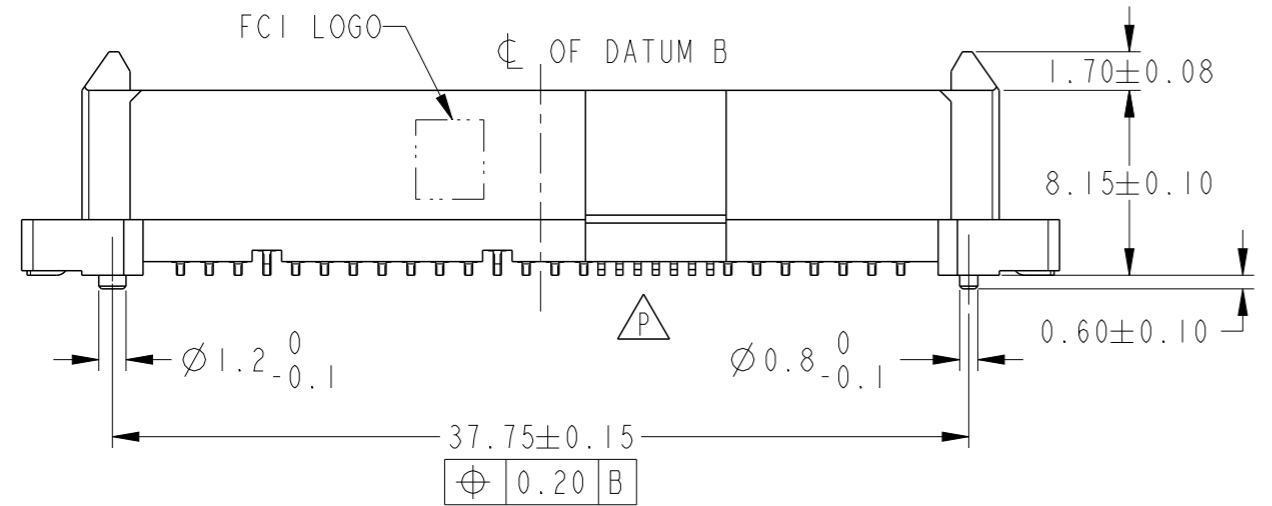
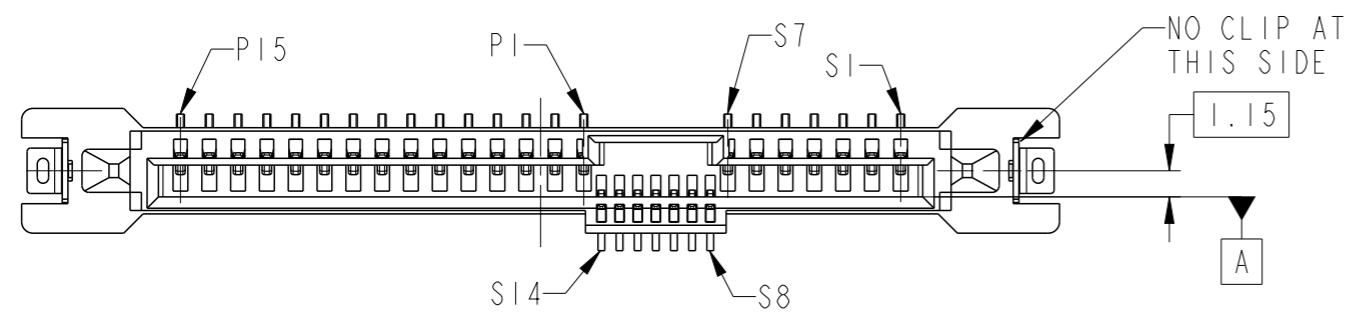
DETAIL 2
SCALE 6:1

spec ref	-	dr	Louis Ng	2011/10/03	projection	MM	size	A3	scale	1:1
tolerance std	ISO 406 ISO 1101	eng	Noorhazelinda	2017/04/21		← →	ecn no	ELX-M-26756-1	rel level	Released
TOLERANCES UNLESS OTHERWISE SPECIFIED		chr	-	apppr						
surface	linear	0.X	±	Amphenol FCI		SAS RECEPTACLE VERTICAL SMT TYPE ASSY		dwg no	10031567	
	angular	0.XX	±0.20							
		0.XXX	±							
		0°	±2°							

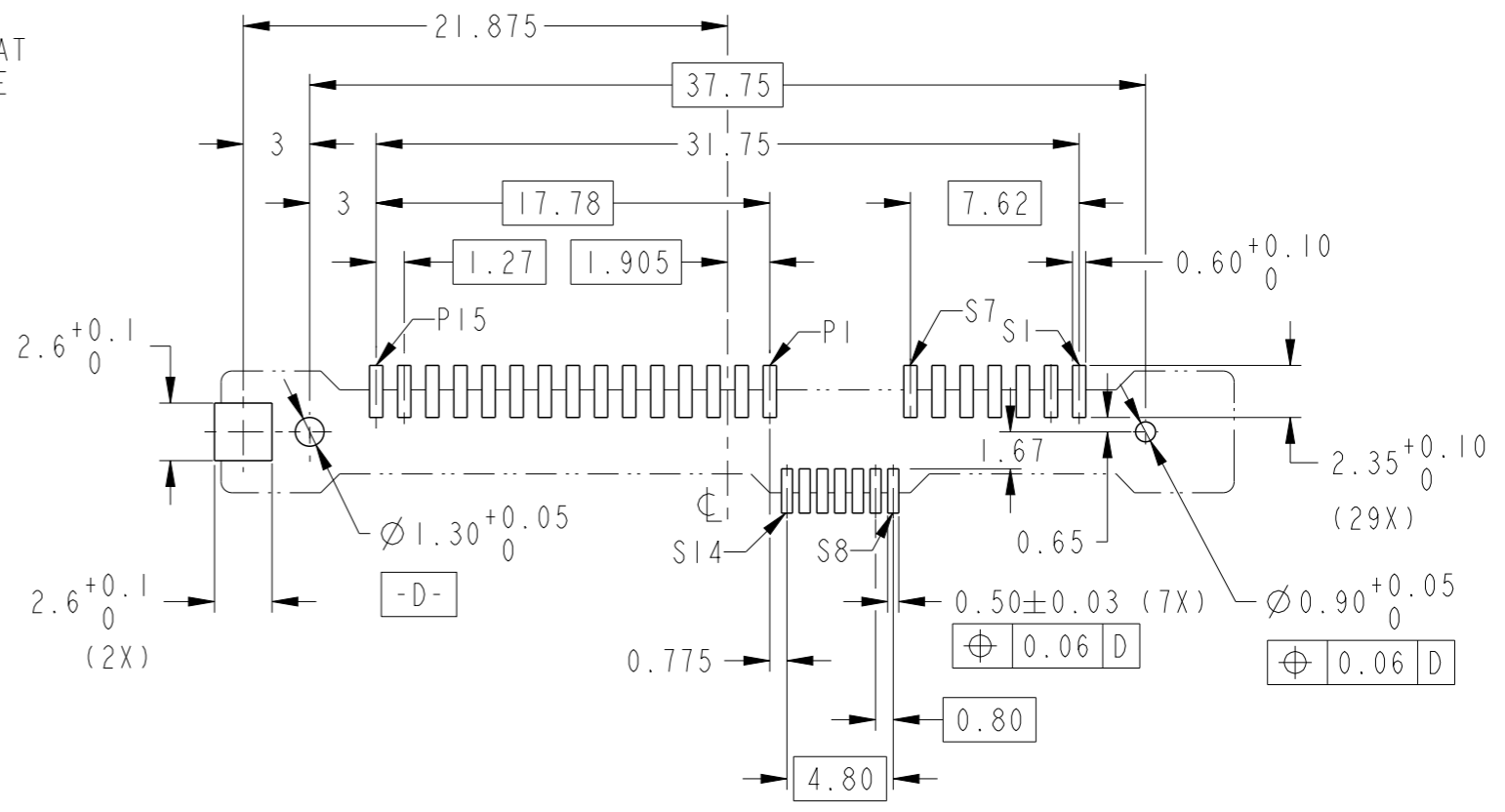
PRODUCT NO	METAL CLIP	PLATING	PICK-UP CAP	PACKAGING	REMARKS	PRODUCT NO	PLATING
10031567-002LF	1 PC	NOTE 2	NO	TRAY	NOTE ⑧	10031567-402LF	NOTE ⑪
10031567-002CLF			YES		NOTE ④ & ⑧	10031567-402CLF	
10031567-002C-TRLF			YES	TAPE & REEL	NOTE ④ ⑥ & ⑧	10031567-402C-TRLF	

NOTE 11

PRODUCT NO	METAL CLIP	PLATING	PICK-UP CAP	PACKAGING	REMARKS
10031567-404C-TRLF	1 PC	NOTE 11	YES	CUSTOM-MADE TAPE & REEL	NOTE ④ ⑥ & ⑧



ALL OTHER DIMENSIONS, REFER TO SHEET 1.



RECOMMENDED PCB LAYOUT

Amphenol FCI

© 2016 AFCI

spec ref	-	dr	Louis Ng	2011/10/03	projection	MM	size	A3	scale	1:1	
tolerance std	ISO 406 ISO 1101	eng	Noorhazlinda	2017/04/21			ecn no	ELX-M-26756-1			
surface	linear	chr	-	apppr			Koon-Poh Tay	2017/05/17	product family	-	rel level
	angular	Amphenol FCI		SAS RECEPTACLE VERTICAL SMT TYPE ASSY			dwg no	10031567		rev	P
		cat. no.	-	Product - Customer Drw			sheet 3 of 3				