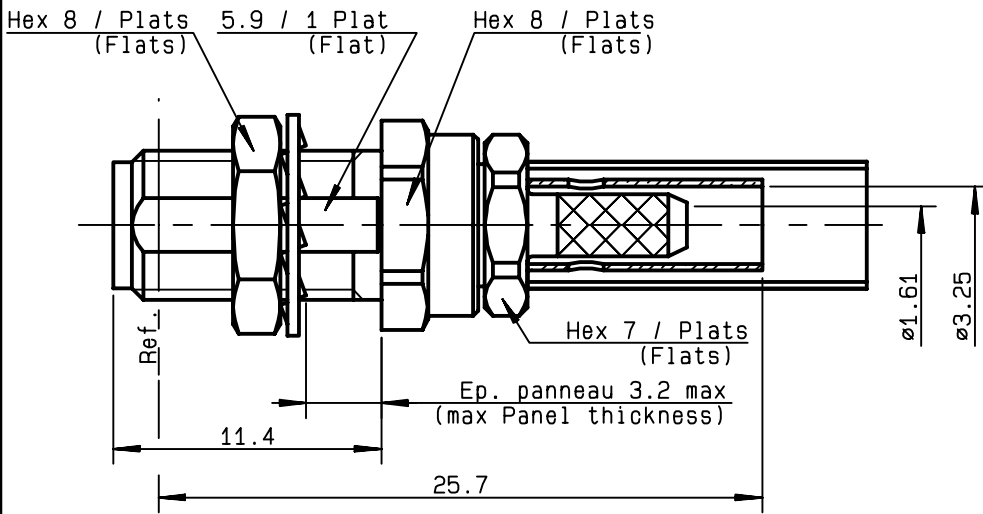
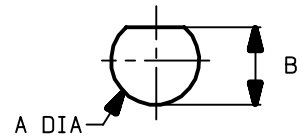


STRAIGHT BULKHEAD JACK
CRIMP OR SOLDER TYPE - CABLE 2.6/50 S

R125.303.001
SERIES SMA



PERCEGE PANNEAU
 MOUNTING HOLE



| | MM | | INCH | |
|---|------|------|-------|-------|
| | maxi | mini | maxi | mini |
| A | 6.45 | 6.4 | 0.254 | 0.252 |
| B | 6.05 | 6 | 0.238 | 0.236 |

| | |
|---------------------------------|---------------------------------------|
| NOMINAL IMPEDANCE | 50 Ω |
| FREQUENCY RANGE | 0-12.4 GHz |
| TEMPERATURE RATING | -65/+165 °C |
| V.S.W.R | 1.15 + .02 x F(GHz)Maxi |
| RF INSERTION LOSS | 0.06 √F(GHz) dB Maxi |
| VOLTAGE RATING | 250 Veff Maxi |
| DIELECTRIC WITHSTANDING VOLTAGE | 750 Veff Mini |
| INSULATION RESISTANCE | 5000 MΩMini |
| HERMETIC SEAL | NA Atm.cm ³ /s |
| LEAKAGE (pressurized only) | NA |
| MECHANICAL DURABILITY | 500 Cycles |
| WEIGHT | gr |
| SPECIFICATION | |

CABLES : **KX 22A**
RG 188
RG 316

OTHERS CHARACTERISTICS

| | | |
|----------------------------|------------|-----------|
| CABLE RETENTION | 90 | N Mini |
| CENTER CONTACT RETENTION | | |
| Axial force - mating end | 27 | N Mini |
| Axial force - opposite end | 27 | N Mini |
| Torque | NA | cm.N Mini |
| RECOMMENDED TORQUES | | |
| Mating | NA | cm.N |
| Panel nut | 80 | cm.N |
| Clamp nut | 100 | cm.N |

| | | | |
|-----------------|------------------|------------------------|---------------------------------------|
| CONNECTOR PARTS | MATERIALS | FINISH | (all values are given in micrometers) |
| BODY | STAINLESS STEEL | PASSIVATED | |
| OUTER CONTACT | | | |
| CENTER CONTACT | BERYLLIUM COPPER | GOLD 1.3 OVER NICKEL 2 | |
| INSULATOR | PTFE | - | |
| GASKET | | - | |
| OTHERS PIECES | BRASS | NICKEL 2 | |

| | | |
|----------------|-------------------|------------------|
| ISSUE | CREATION DATE | FILE PART-NUMBER |
| 9840D04 | 18/01/1991 | |



RADIALL®

BAFFERT

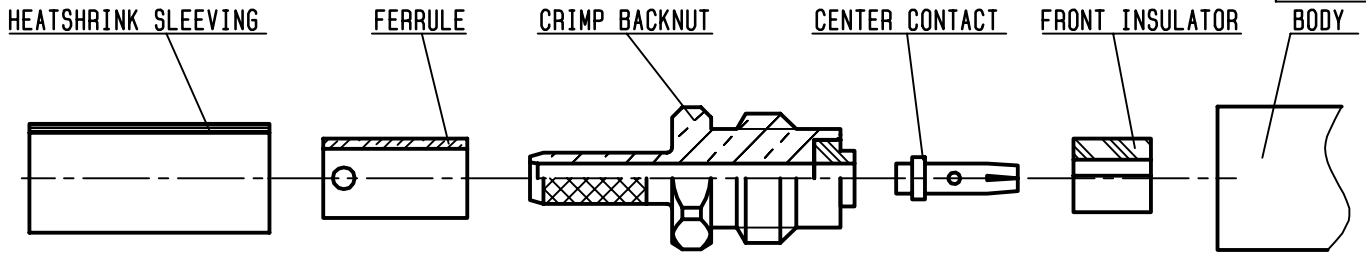
The information given here is subject to change without notice.
 Design changes may be in order to improve the product .

Connect to the future



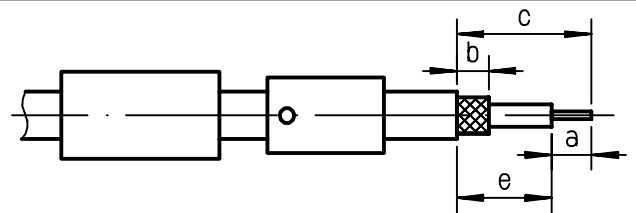
R125.303.001

ISSUE **9840D04** SERIES **SMA**



①

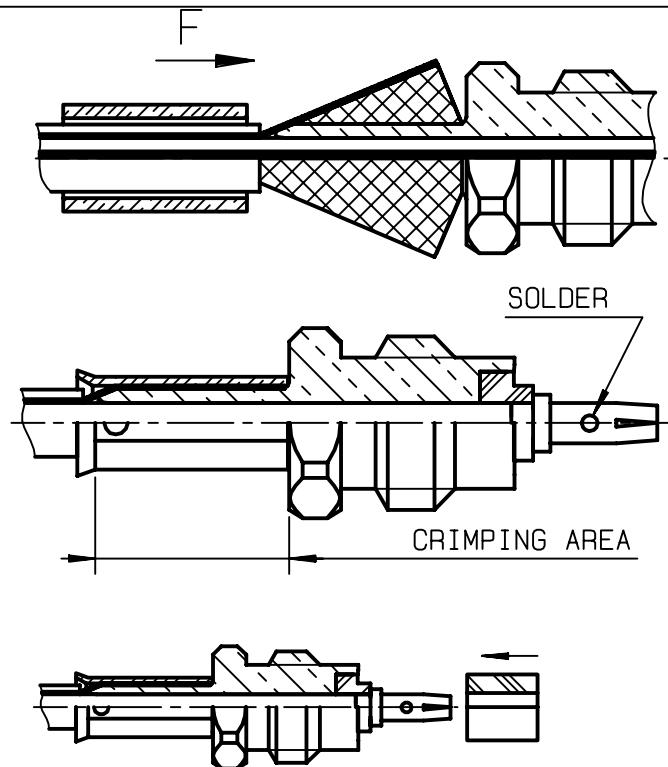
Slide the heatshrink sleeving and the ferrule onto the cable
 Ferrule holes to the front if SOLDER.
 Ferrule holes to the rear if CRIMP.
 Strip the cable .



| Stripping | a | b | c | d | e |
|-----------|-------|-------|-------|---|---|
| inch | 0.138 | 0.276 | 0.531 | 0 | 0 |
| mm | 3.5 | 7 | 13.5 | | |

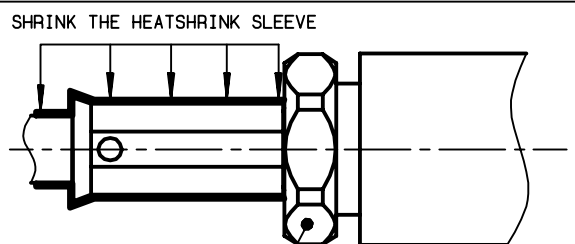
②

Fan the braid .
 Slide the back body between dielectric and braid .
 Put the cable against the insulator.
 Slide ferrule over the braid (in direction F)
 Crimp ferrule with RADIALL crimping tool R282 211 or crimping tool R282 293 000 (M22520/5-01) + dies R282 235 003 (M22520/5-03) Hex .128
 Slide the center contact on the cable until it bottoms against insulator .
 Solder the center contact.
 Slide the front insulator on the center contact.



③

Screw the sub-assembly into the connector body (recommended coupling torque: 7.08 to 10.16 in.lb)
 Cut the excess of braid.
 Slide sleeve over ferrule and heatshrink in place.



Hex. : .276/ flats