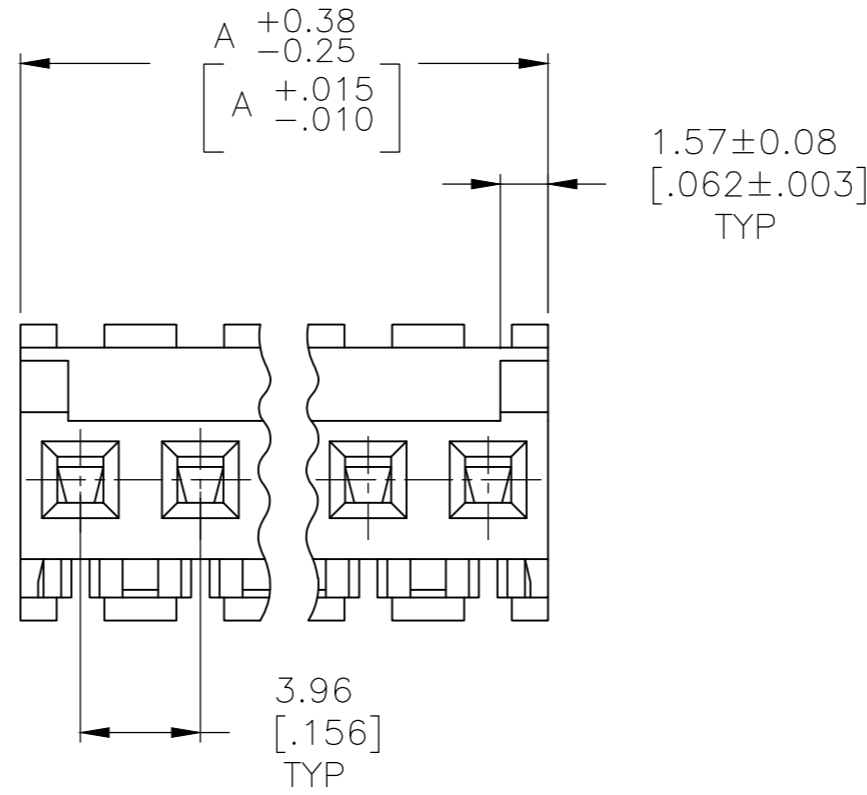
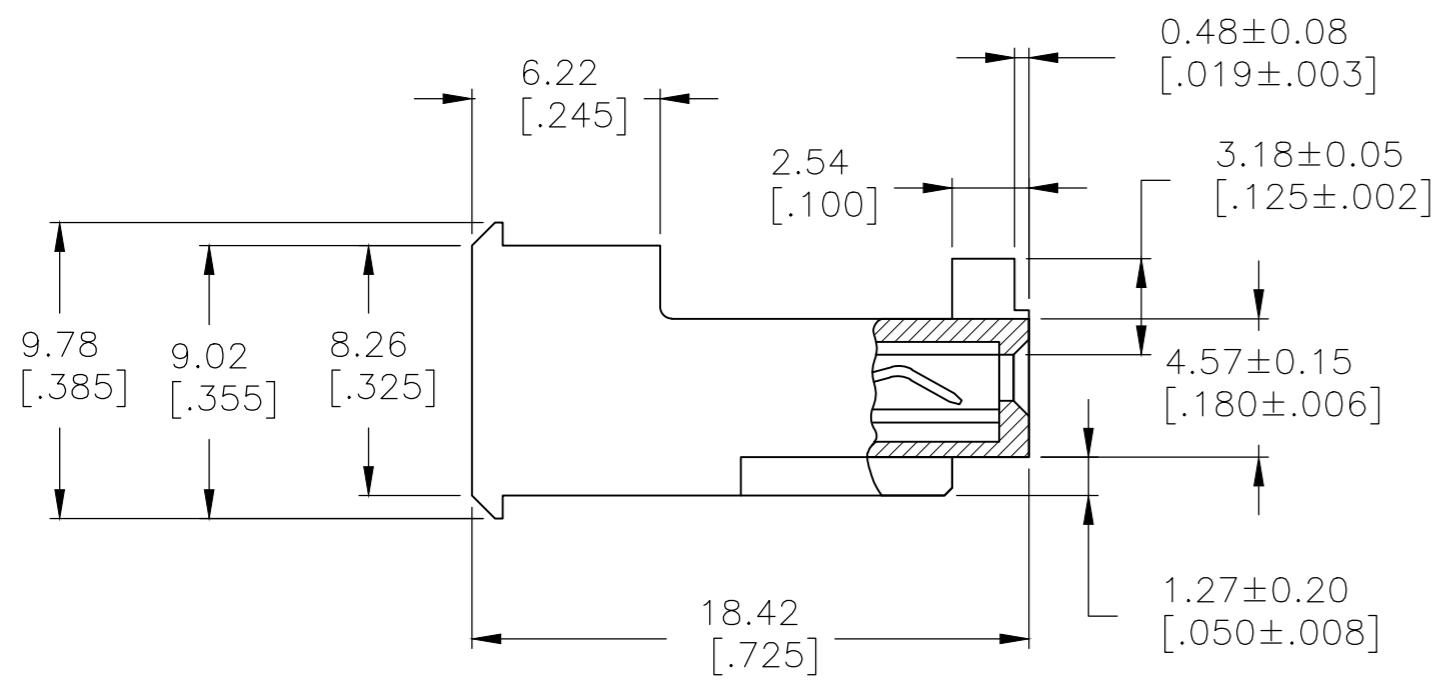
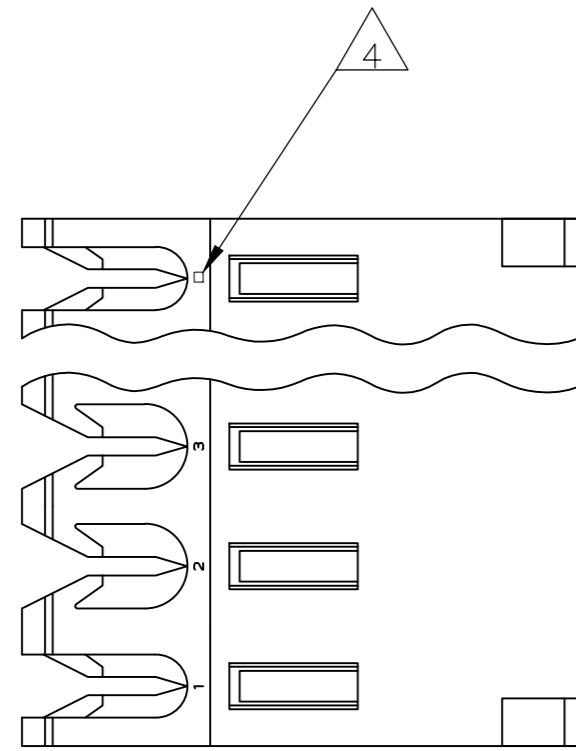


THIS DRAWING IS UNPUBLISHED. RELEASED FOR PUBLICATION  
 © COPYRIGHT - By - TE CONNECTIVITY ALL RIGHTS RESERVED.

LOC	DIST	REVISIONS					
		P	LTR	DESCRIPTION	DATE	DWN	APVD
CM	54	E		REVISED PER ECR-20-000814	26MAY2020	PC	SW

- 1 MATERIAL: CONNECTOR - NYLON UL94V-2 (ORANGE).  
 CONTACTS - 0.30[.012] THICK COPPER ALLOY  
 (BRIGHT TIN-LEAD 0.00203[.000080] MIN. THICK FOR CONTACTS 644469-2 THRU 1-644469-4)  
 (MATTE WHISKER MITIGATED TIN 0.00203[.000080] MIN THICKNESS OVER NICKEL UNDERPLATE FOR 3-644469-2 THRU 4-644469-4).
- 2 CONTACTS ACCEPT 18 AWG WIRE WITH 2.41[.095] MAX INSULATION DIAMETER.
- 3 CONTACTS MUST ACCEPT 1.14±0.03[.045±.001] SQUARE POST AND REMAIN LOCKED IN POSITION.
- 4 IDENTIFICATION NUMBER FOR LAST CIRCUIT MAY NOT APPEAR ON ALL ASSEMBLIES.
- 5 DIMENSIONS IN BRACKETS ARE IN INCHES.
- 6 HOUSING FEATURES ARE: FEED-THRU WITHOUT LOCKING RAMP AND WITH POLARIZING TAB.
- 7 OBSOLETE PARTS: OBSOLETE CIS STREAMLINING PER D.RENAUD/D.SINISI
- 8 OBSOLETE PARTS



55.47 [2.184]	14	4-644469-4	
51.51 [2.028]	13	4-644469-3	
47.55 [1.872]	12	4-644469-2	
43.59 [1.716]	11	4-644469-1	
39.62 [1.560]	10	4-644469-0	
35.66 [1.404]	9	3-644469-9	
31.70 [1.248]	8	3-644469-8	
27.74 [1.092]	7	3-644469-7	
23.77 [.936]	6	3-644469-6	
19.81 [.780]	5	3-644469-5	
15.85 [.624]	4	3-644469-4	
11.89 [.468]	3	3-644469-3	
7.92 [.312]	2	3-644469-2	
7 SUPERSEDED	55.47 [2.184]	14	<del>1-644469-4</del>
7 SUPERSEDED	51.51 [2.028]	13	<del>1-644469-3</del>
8 SUPERSEDED	47.55 [1.872]	12	<del>1-644469-2</del>
7 SUPERSEDED	43.59 [1.716]	11	<del>1-644469-1</del>
7 SUPERSEDED	39.62 [1.560]	10	<del>1-644469-0</del>
7 SUPERSEDED	35.66 [1.404]	9	<del>644469-9</del>
7 SUPERSEDED	31.70 [1.248]	8	<del>644469-8</del>
7 SUPERSEDED	27.74 [1.092]	7	<del>644469-7</del>
7 SUPERSEDED	23.77 [.936]	6	<del>644469-6</del>
7 SUPERSEDED	19.81 [.780]	5	<del>644469-5</del>
7 SUPERSEDED	15.85 [.624]	4	<del>644469-4</del>
7 SUPERSEDED	11.89 [.468]	3	<del>644469-3</del>
7 SUPERSEDED	7.92 [.312]	2	<del>644469-2</del>
DIM A		NO OF CIRCUITS	PART NO

THIS DRAWING IS A CONTROLLED DOCUMENT.		DWN B. LEWIS 12 FEB 91		
DIMENSIONS: mm [INCHES]		CHK R. SWING 12 FEB 91		
TOLERANCES UNLESS OTHERWISE SPECIFIED:		APVD D.R. CLARK 20 FEB 91	NAME	
0 PLC ± -	1 PLC ± -	PRODUCT SPEC	MTA 156 CONNECTOR ASSEMBLY, 18 AWG, STANDARD	
2 PLC ± -	3 PLC ± -	108-1051	SIZE	CAGE CODE
4 PLC ± -	ANGLES ± -	114-1020	A2	00779
MATERIAL	FINISH	WEIGHT	DRAWING NO	RESTRICTED TO
1	1	CUSTOMER DRAWING	C=644469	-
SCALE 4:1			SHEET 1 OF 1	REV E