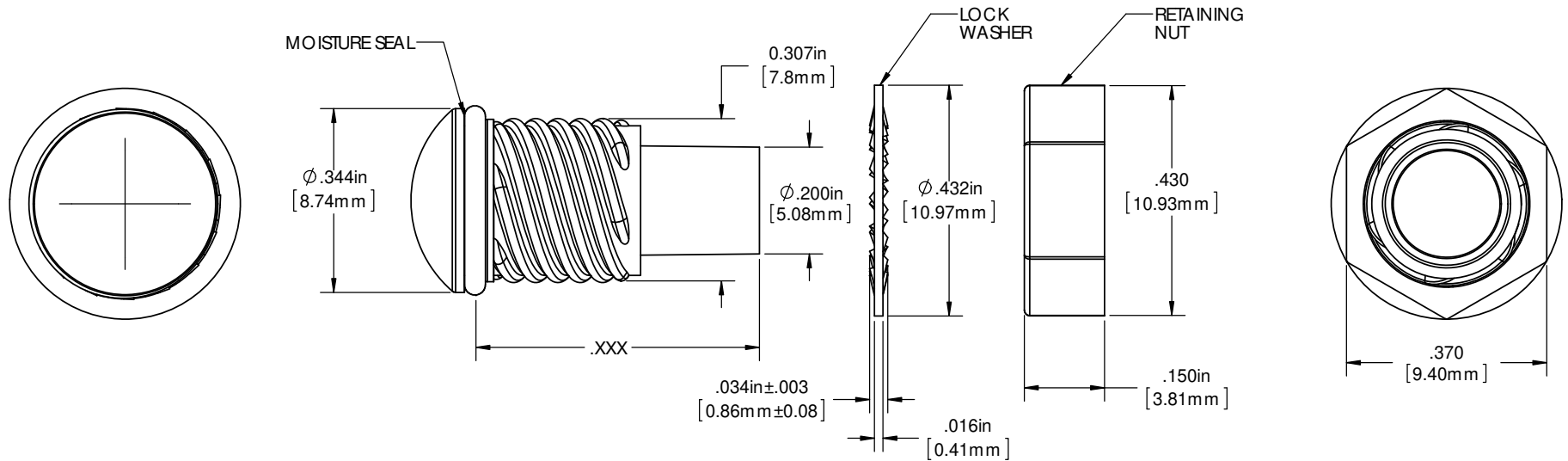
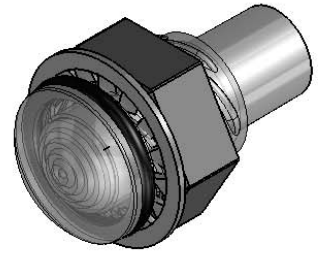


8 7 6 5 4 3 2 1

**NOTES:**

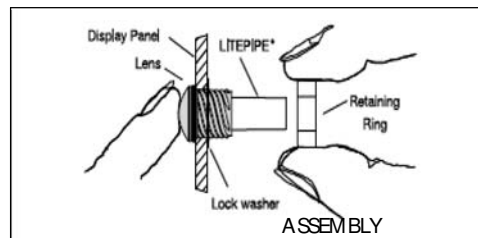
1. MOUNTING: Mounts in a  $\phi .312 \pm .002$  ( $\phi 7.92\text{mm} \pm 0.051$ ) panel hole on .500 (12.7mm) centers. Panel thickness .031 (.8mm) to .125 (3.18mm). Panel hole shall be deburred, but not chamfered.
2. ASSEMBLY: Insert Litepipe through the panel hole, slide lock washer onto lens barrel on litepipe and twist on retaining ring. Slide PCB into position aligning LED with the end of the Litepipe unit.
3. MATERIAL: Litepipe - Acrylic ( Clear optical grade) UL 94-HB  
 Lens - Polycarbonate UL 94-V2  
 Seal - EPDM  
 Lock washer - FH Steel, Nickel Plate  
 Retaining Nut - Thermoplastic (white) UL 94-V0
4. Meets NEMA 6P/IP 67 standards
5. U.S. & Foreign Pat. Issued

REVISIONS					
ECN #	REV.	DESCRIPTION	DATE	INITIALS	CHKD
	001	REVISED PER ECR 111009AZD1	8/18/10	KH	DZ
	002	MODIFIED GENERAL TOLERANCE .XX	11/29/11	KH	AZ



ORDERING CODE: LCS XXX XXX

LITEPIPE		LENS	
XXX =	LENGTH	XXX =	COLOR
032	.320"	RTP	RED TRANSPARENT
052	.520"	ATP	AMBER TRANSPARENT
072	.720"	GTP	GREEN TRANSPARENT
092	.92"	BTP	BLUE TRANSPARENT
112	1.12"	YTP	YELLOW TRANSPARENT
132	1.32"	CTP	CLEAR TRANSPARENT



<small>DIMENSION STYLE: INCHES (MM)                  GENERAL TOLERANCES UNLESS OTHERWISE SPECIFIED</small>		APPROVAL DRAWN: KHOWARD DATE: 8/18/10	190 BOSTICK BLVD, SUITE 101 SAN MARCOS, CA 92069 USA PHONE: (760) 560-1300, FAX: (760) 560-1301 EMAIL: vccsales@vcc-lite.com
<small>INCHES</small> X ± .020 ± .508 XX ± .015 ± .281 XXX ± .005 ± .127	<small>MM</small> X ± .020 ± .508 XX ± .015 ± .281 XXX ± .005 ± .127	CHECKED: DPZ DATE: 8/19/10	
<small>SHOULDER AND HUMP                  "RIGID" OR "MAX"</small>		MATERIAL: SEE NOTES	SIZE DWG. NO. REV <b>B</b> LCS XXX XXX 002
<small>THIRD ANGLE PROJECTION</small>		FINISH: SEE NOTES	
<small>PROPRIETARY AND CONFIDENTIAL                  THE INFORMATION CONTAINED IN THIS DRAWING IS THE SOLE PROPERTY OF VISUAL COMMUNICATIONS COMPANY, INC. ANY REPRODUCTION IN PART OR AS A WHOLE WITHOUT THE WRITTEN PERMISSION OF VISUAL COMMUNICATIONS COMPANY, INC IS PROHIBITED.</small>		DO NOT SCALE DRAWING	

8 7 6 5 4 3 2 1