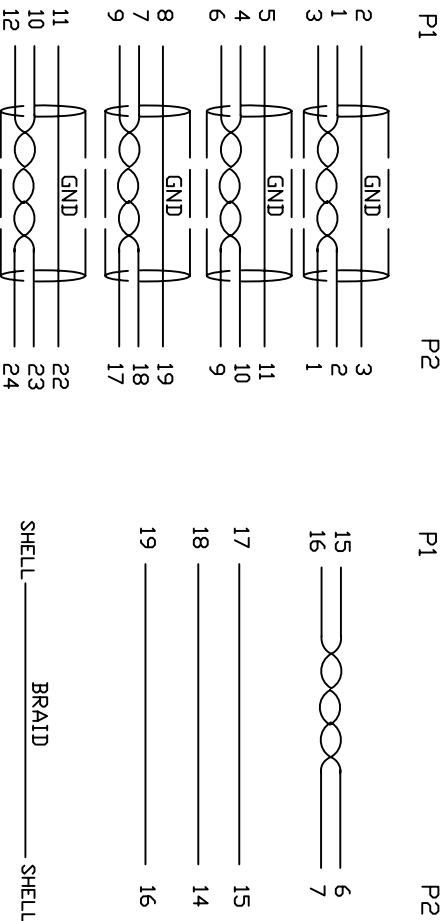


1. Wiring Diagram.



8	SCREW	#4-40UNC RE32±0.2mm BLK	2
7	COOPER	W30MM*1.75MM	1
6	COOPER	W13MM*1.30MM	1
5	PVC	45P PVC BLACK OVERMOLD	80g
4	PE	LLDPE 500026 6201 INSIDE MOLDING	30g
3	CONN	DV118+1 MALE PIN G/F, SHELL PLATED G/F, INSULATION BLACK	P2
2	CONN	HDMI A TYPE MALE PIN G/F, SHELL PLATED G/F, INSULATION BLACK	P1
1	CABLE	UL20276 (28AWG (1/0.32CUAD) *IP+D+EA+AL/MY) *IP+28AWG (1/0.32CUAD) *IP+ 28AWG (1/0.32CU) X3G+AEM(16/8/0.12AM) OD7.3 BLACK	1
NO.	PART NO.	DESCRIPTION	QTY
		UNIT/REF	

BILL OF MATERIAL

A	INITIAL RELEASE	2017/4/20
REVISION#	DESCRIPTION	DATE
	HDMI M 70 DV118+1 M CABLE	
DRAWN	DWN NO:	REV
EDWIN LAI	741-20010-00200	A
CHECKED	CUSTOMER P/N:	REV
WIN C		
APPROVAL	CUSTOMER:	
	SHEET 1 OF 1	

Cnc Tech,LLC

HDMI M 70 DV118+1 M CABLE

2.Cable test condition :  
 Open / Short : 100%  
 Insulation resistance : 5M ohms  
 Contact resistance : 2 ohm  
 Hipot : DC 300V / 1 sec  
 3.Each pcs with PE polybag.