

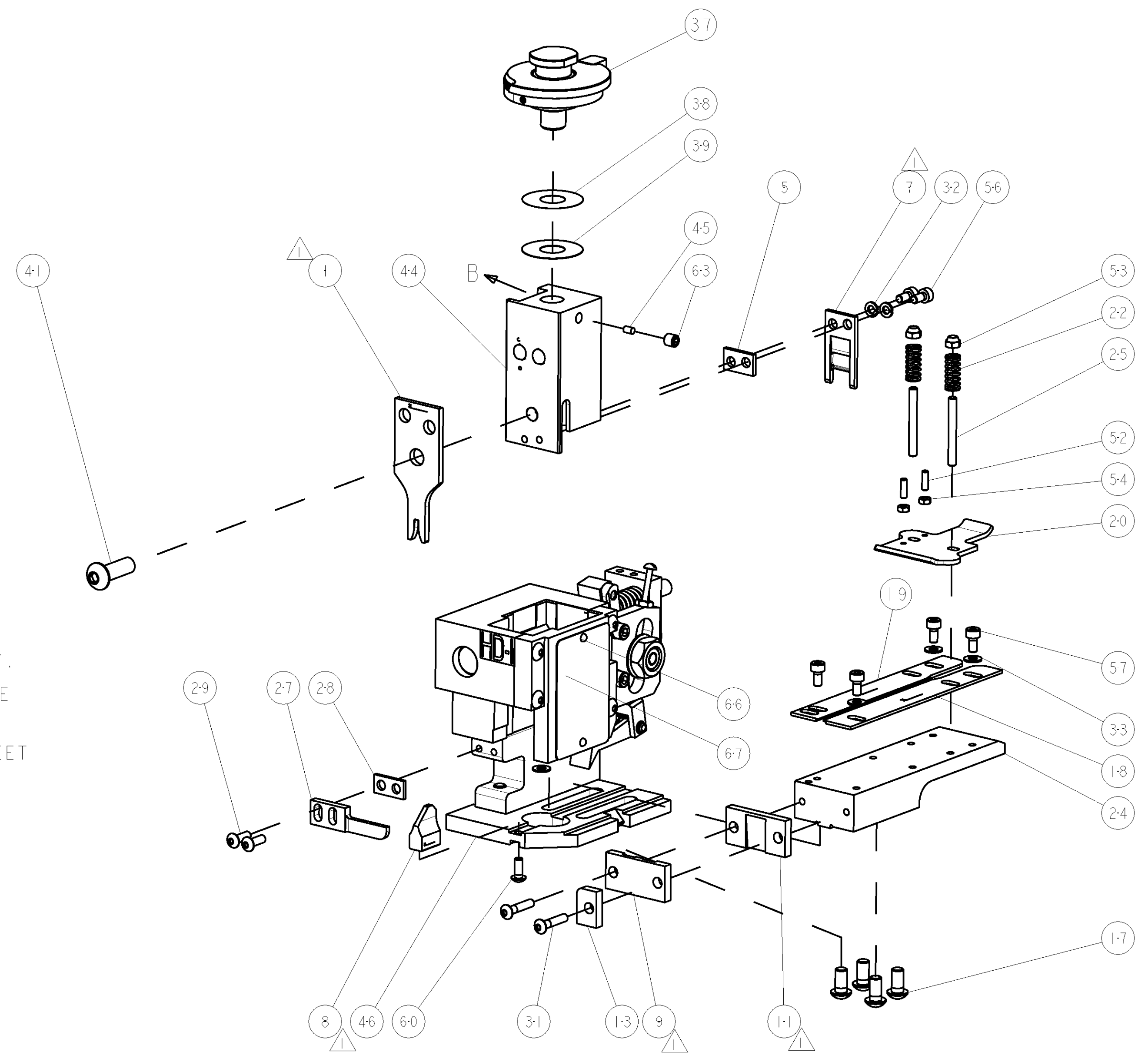
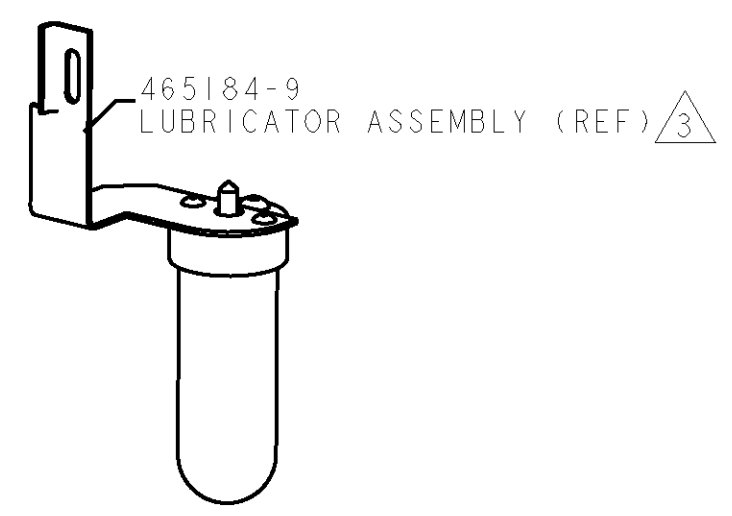
PART NUMBER	REV	TERMINATOR	FEED TYPE	DESCRIPTION
1529272-1	A	BENCH & LEADMAKER	MECH POST FEED	HDI APPLICATOR
7-1529272-1	A	BENCH & LEADMAKER	MECH POST FEED	-1 AND SPARE PARTS
7-1529272-7	A	-	-	SPARE PARTS KIT

LOC	DIST	REV	DATE	BY	CHK	APPR
A	66	A	15MAY2008	MB	MC	
		A1	01NOV2010	RS	SX	

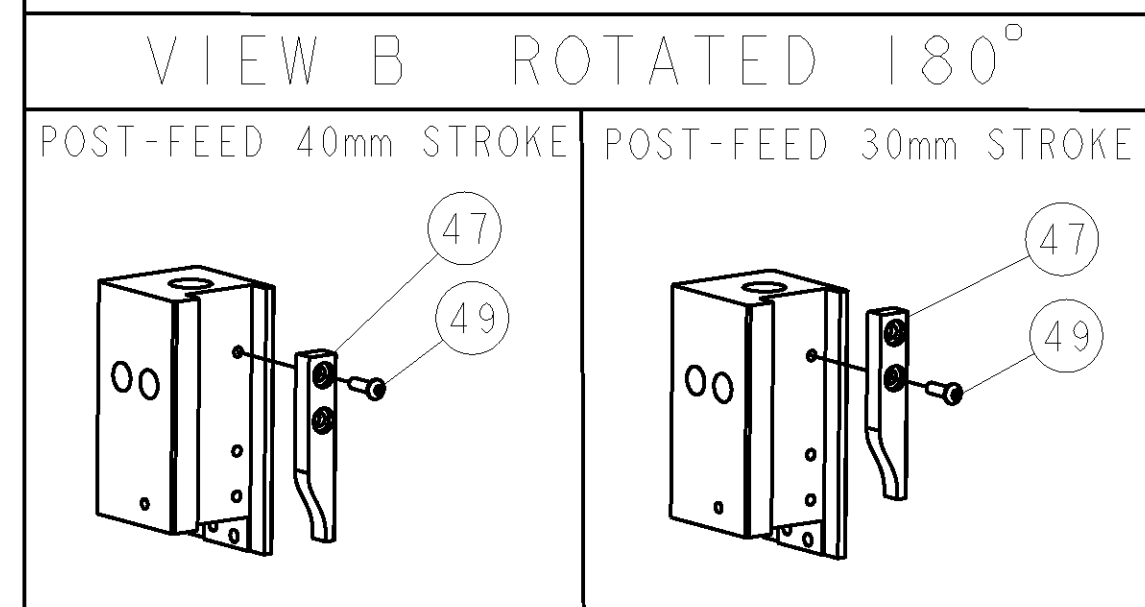
CRIMP DATA	TE TERMINAL	TE CRIMP SPECS
TERMINAL NAME: RING TONGUE		
CRIMP	SIZE	TYPE
WIRE	2.54 [.100 IN]	F
INSUL	-	-
WIRE STRIP LENGTH 3.90-4.70 [.154-.185 IN]		APPL INSTRUCTIONS 408-8323 & 408-8490
TERMINAL APPL SPEC	114-3118	FEED 11.81 [.465 IN]

TERMINALS APPLIED			
160087	160761	-	-
160088	-	-	-
160089	-	-	-
160395	-	-	-
160730	-	-	-

WIRE SIZE	CRIMP HEIGHT	REF SETTING
1.50 mm ²	1.80 ±0.05 [.071 ±.002 IN]	B7
1.00 mm ²	1.68 ±0.05 [.066 ±.002 IN]	C6
0.75 mm ²	1.63 ±0.05 [.064 ±.002 IN]	D0
0.50 mm ²	1.57 ±0.05 [.062 ±.002 IN]	D4



- 1 RECOMMENDED SPARE PARTS
- 2. GREASE RAM, CAM, CAM FOLLOWER AND FEED ROD LIGHTLY.
- 3 CERTAIN TERMINALS REQUIRE LUBRICATION. REFER TO THE APPLICATOR INSTRUCTION SHEET FOR MORE INFORMATION.
- 4. LUBRICATE DAILY PER THE APPLICATOR INSTRUCTION SHEET SUPPLIED WITH THE APPLICATOR.
- 5 WIRE RANGE SHOWN IS THAT OF THE TERMINAL.



*** WARNING**
 ON INSTALLATION, SET WIRE DISC TO LARGEST WIRE SIZE SETTING. USE OF SETTINGS BELOW MIN. REQUIRED CRIMP HEIGHT SETTING WILL CAUSE DAMAGE TO CRIMP TOOLING.

QTY	DESCRIPTION	ITEM NO
-	1338705-4 DOCUMENTATION PACKAGE	71
-	461264-5 PLATE, IDENTIFICATION	67
-	21017-2 SCREW, DRIVE	66
-	3-18031-0 SCR, SET, CUP POINT M6 X 6.0	63
-	18024-7 SCR, BTN SKT HD CAP (M4 X 10.0)	60
-	1-18023-0 SCR, SKT HD CAP M4 X 8.0	57
-	1-18023-0 SCR, SKT HD CAP M4 X 8.0	56
-	18029-1 NUT, HEX, REG M3	54
-	986965-1 NUT, LOCK, HEX, TORQUE (M4)	53
-	2-18032-2 SCR, SET, FLT POINT M3 X 10.0	52
-	18024-3 SCR, BTN SKT HD CAP (M3 X 10.0)	49
-	1338676-1 CAM, UNIVERSAL POST-FEED	47
-	1338662-1 SUB ASSY, APPLICATOR FRAME	46
-	690191-1 PLUG, NYLON	45
-	1320998-1 RAM	44
-	2-18024-6 SCR, BTN SKT HD CAP (M8 X 25.0)	41
-	690125-1 SHIM SUB-ASSY	39
-	469367-3 SHIM	38
-	879103-4 FINE ADJUST HEAD ASSEMBLY	37
-	18027-2 WASHER, FLAT, REG M4	33
-	18025-2 WASHER, SPRG LOCK, REG M4	32
-	1-18024-0 SCR, BTN SKT HD CAP (M4 X 20.0)	31
-	18024-8 SCR, BTN SKT HD CAP (M4 X 12.0)	29
-	3-690451-2 SPACER, STRIPPER	28
-	240639-1 STRIPPER (MACHINING)	27
-	1320906-1 STUD, THREADED	25
-	1320995-1 PLATE, STRIP GUIDE	24
-	4-22281-1 SPRING, DRAG	22
-	1338665-1 DRAG	20
-	458030-2 STRIP GUIDE, REAR	19
-	458031-2 STRIP GUIDE, FRONT	18
-	1-18024-8 SCR, BTN SKT HD CAP (M6 X 12.0)	17
-	690481-2 SPACER, HOLD DOWN	13
-	240644-1 PLATE, REAR SHEAR	11
-	690482-5 PLATE, FRONT SHEAR	9
1	2 1633385-4 ANVIL, COMBINATION	8
-	690474-5 BLADE, SLUG	7
-	3-240641-7 SPACER	5
-	-	4
-	-	3
-	-	2
1	2 456407-8 CRIMPER, WIRE PREMIUM	1

DIMENSIONS: INCHES		TOLERANCES UNLESS OTHERWISE SPECIFIED:		DWN M. BETISS 09APR2008	
Ø	PLC ±.01	Ø	PLC ±.01	CHK M. CLIFFORD 09APR2008	NAME
Ø	PLC ±.001	Ø	PLC ±.001	Tyco Electronics Harrisburg, PA 17105-3608	
Ø	PLC ±.0001	Ø	PLC ±.0001	PRODUCT SPEC	
Ø	PLC ±.0001	Ø	PLC ±.0001	APPLICATION SPEC	
Ø	PLC ±.0001	Ø	PLC ±.0001	SIZE CAGE CODE DRAWING NO	
Ø	PLC ±.0001	Ø	PLC ±.0001	RESTRICTED TO	
MATERIAL		FINISH		WEIGHT	
CUSTOMER DRAWING		SCALE 3:5		SHEET 1 OF 1 REV A1	