

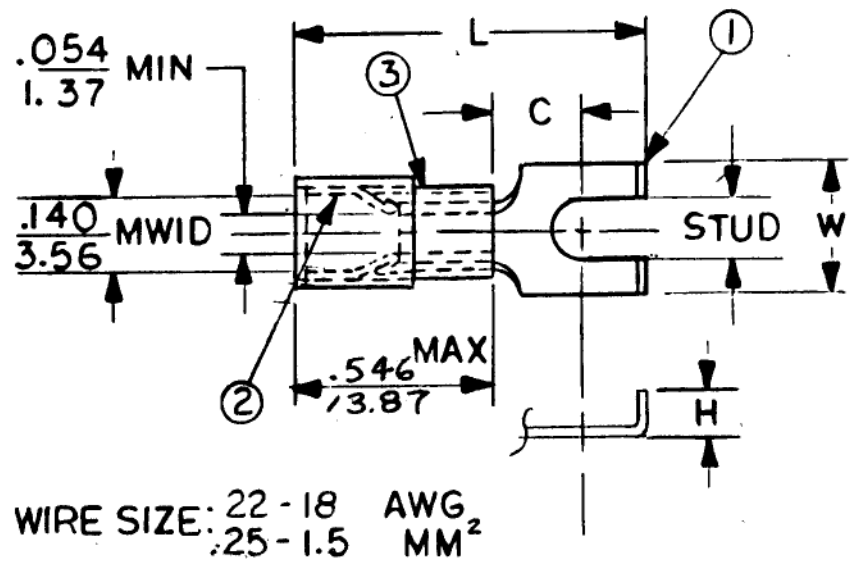
NOTES:

- ① MAT'L: COPPER (STOCK TKN. $\frac{.031}{.79}$)
PLATING: ELECTRO TIN (.0003 MIN)
- ② TIN-PLATED BRASS FUNNEL FERRULE
- ③ NYLON INSULATION (COLOR CODED RED)

STUD SIZES: ($\pm .005$)

- 02 = .094
- 04 = .119
- 06 = .146
- 08 = .173
- 10 = .198
- 14 = .265
- 56 = .328
- 38 = .390

"UL" LISTING *E32244
"CSA" LISTING *18689



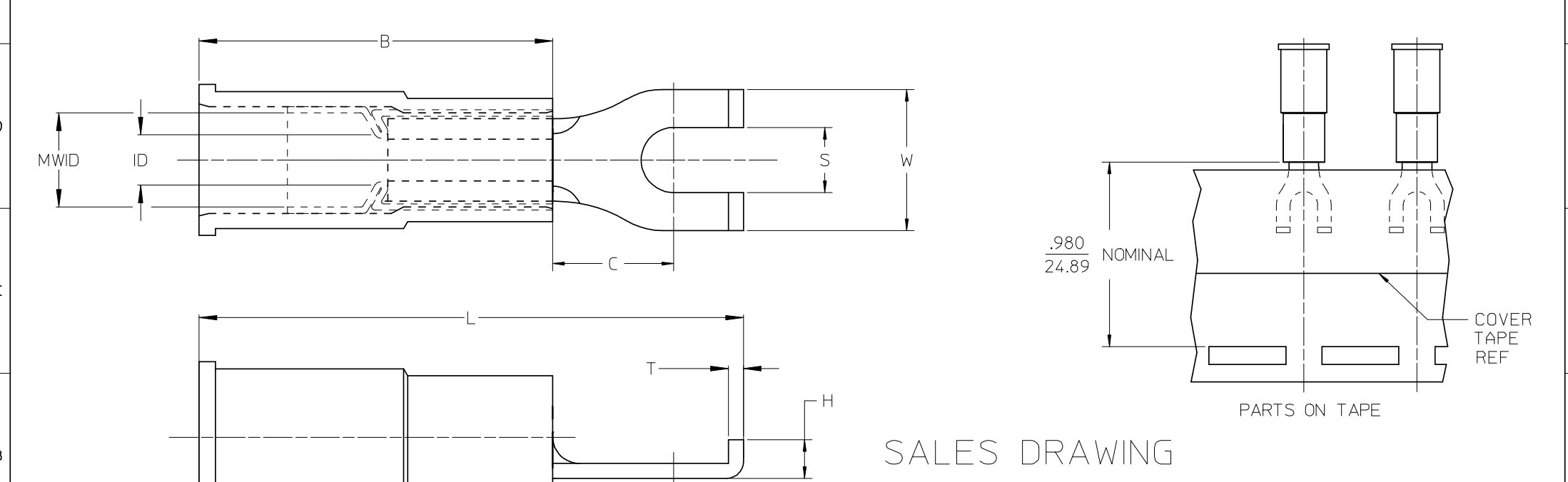
WIRE SIZE: 22-18 AWG
25-1.5 MM²

ALL DIMENSIONS = $\frac{\text{INCHES}}{\text{MM}}$ (MWID) = DENOTES MAXIMUM WIRE INSULATION DIAMETER

PART NUMBER	"W" $\pm .010$	"C" MIN.	"L" MAX.	"H" REF.	AVAILABLE STUD SIZES
A-515-	$\frac{.291}{7.39}$	$\frac{.207}{5.26}$	$\frac{.927}{23.55}$	$\frac{.078}{1.98}$	04, 06, 08
A-590-	$\frac{.420}{10.67}$	$\frac{.235}{5.97}$	$\frac{1.010}{25.65}$	$\frac{.078}{1.98}$	06, 08, 10
A-593-	$\frac{.375}{9.53}$	$\frac{.235}{5.97}$	$\frac{1.019}{25.88}$	$\frac{.078}{1.98}$	06, 08, 10
A-596-	$\frac{.325}{8.26}$	$\frac{.235}{5.97}$	$\frac{1.017}{25.83}$	$\frac{.093}{2.36}$	04, 06, 08

DIMENSIONAL TOLERANCES UNLESS OTHERWISE SPECIFIED			REFERENCE	SCALE: NTS	DATE	TITLE: FLANGED SPADE TONGUE TERMINAL AVIKRIMP 500-SERIES		
FRAC.	DEC.	ANG.	REV. A 02/10/80 6mm 1/6/94	DRWN. BY: JJ	11-1484			
\pm	\pm	\pm		CHKD. BY:				
				APPRD. BY:				
							DWG. NO. A	CUSTOMER DWG

10		9		8		7		6		5		4		3		2		19125	
LOOSE_P TEECE		TAPE MOUNTED		DIMENSIONS														FINISH	
MATERIAL NUMBER	ENGINEERING NUMBER	MATERIAL NUMBER	ENGINEERING NUMBER	STUD SIZE	S ±.005	W MAX	C MIN	ID MIN	MWID	B REF	L MAX	H REF	T REF	INSULATION COLOR					
191250003	A-515-06	191250004	A-515-06T	6	.146/3.71	.301/7.6	.207/5.3	.054/1.37	.138/3.51	.536/13.61	.927/23.55	.08/2.0	.031/0.79	RED					
191250005	A-515-08	191250006	A-515-08T	8	.173/4.39	.301/7.6	.207/5.3	.054/1.37	.138/3.51	.536/13.61	.927/23.55	.08/2.0	.031/0.79	RED					
191250007	A-515-10	191250008	A-515-10T	10	.198/5.03	.301/7.6	.207/5.3	.054/1.37	.138/3.51	.536/13.61	.927/23.55	.08/2.0	.031/0.79	RED					
191250033	B-516-06	191250034	B-516-06T	6	.146/3.71	.301/7.6	.209/5.3	.081/2.06	.165/4.19	.536/13.61	.936/23.77	.08/2.0	.031/0.79	BLUE					
191250035	B-516-08	191250036	B-516-08T	8	.173/4.39	.301/7.6	.209/5.3	.081/2.06	.165/4.19	.536/13.61	.936/23.77	.08/2.0	.031/0.79	BLUE					
191250037	B-516-10	191250038	B-516-10T	10	.198/5.03	.301/7.6	.209/5.3	.081/2.06	.165/4.19	.536/13.61	.936/23.77	.08/2.0	.031/0.79	BLUE					
191250074	C-517-06	191250075	C-517-06T	6	.146/3.71	.345/8.8 (A)	.270/6.85 (A)	.128/3.25	.225/5.71	.669/16.99	1.165/29.6 (A)	.10/2.5	.040/1.02	YELLOW					
191250076	C-517-08	191250077	C-517-08T	8	.173/4.39	.385/9.8	.270/6.85 (A)	.128/3.25	.225/5.71	.669/16.99	1.165/29.6 (A)	.10/2.5	.040/1.02	YELLOW					
191250078	C-517-10	191250079	C-517-10T	10	.209/5.3 (A)	.385/9.8	.270/6.85 (A)	.128/3.25	.225/5.71	.669/16.99	1.165/29.6 (A)	.10/2.5	.040/1.02	YELLOW					



- NOTES:
1. MATERIAL: COPPER
 2. PLATING: ELECTRO-TIN
 3. MWID = MAXIMUM WIRE INSULATION DIAMETER
 4. PART IS RoHS COMPLIANT

STANDARDIZE EIC NO: ETC2008-0012 DRWN: RSTONE 2007/11/26 CHKD: JMACNEIL 2007/11/26 APPR: JMACNEIL 2007/12/05 REV A	QUALITY SYMBOLS ▽=0 ∇=0	GENERAL TOLERANCES (UNLESS SPECIFIED) <table border="1"> <thead> <tr> <th></th> <th>mm</th> <th>INCH</th> </tr> </thead> <tbody> <tr> <td>4 PLACES</td> <td>± ---</td> <td>± ---</td> </tr> <tr> <td>3 PLACES</td> <td>± ---</td> <td>± .005</td> </tr> <tr> <td>2 PLACES</td> <td>± 0.13</td> <td>± .01</td> </tr> <tr> <td>1 PLACE</td> <td>± 0.25</td> <td>± ---</td> </tr> </tbody> </table>		mm	INCH	4 PLACES	± ---	± ---	3 PLACES	± ---	± .005	2 PLACES	± 0.13	± .01	1 PLACE	± 0.25	± ---	DIMENSION STYLE IN/MM	SCALE ---	DESIGN UNITS INCH	THIRD ANGLE PROJECTION
		mm	INCH																		
	4 PLACES	± ---	± ---																		
	3 PLACES	± ---	± .005																		
2 PLACES	± 0.13	± .01																			
1 PLACE	± 0.25	± ---																			
DRAFT WHERE APPLICABLE MUST REMAIN WITHIN DIMENSIONS		DRAWN BY JJ	DATE 1984/11/14	TITLE FLANGED SPADE TERMINAL, AVIKRIMP -500 SERIES,																	
		CHECKED BY	DATE	MOLEX INCORPORATED																	
		APPROVED BY	DATE	MATERIAL NO. SEE CHART	DOCUMENT NO. SD-19125-001	SHEET NO. 1 OF 1															

THIS DRAWING CONTAINS INFORMATION THAT IS PROPRIETARY TO MOLEX INCORPORATED AND SHOULD NOT BE USED WITHOUT WRITTEN PERMISSION