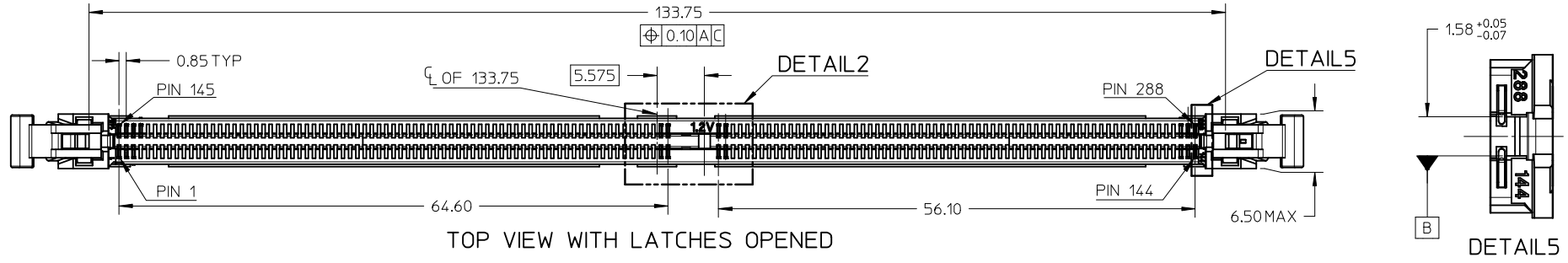
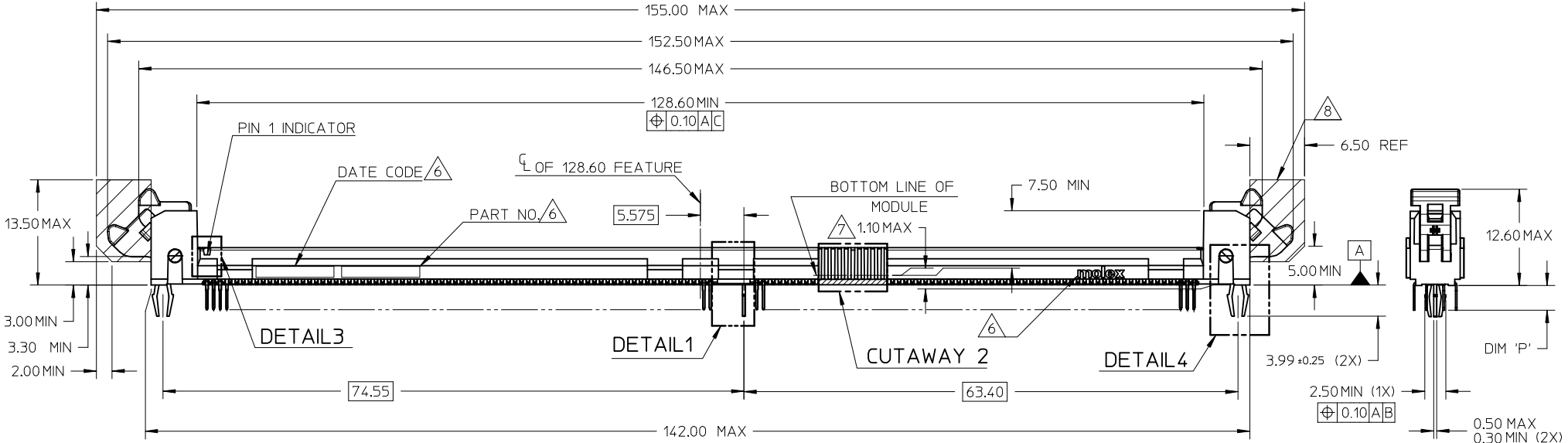


10 9 8 7 6 5 4 3 2 1



TOP VIEW WITH LATCHES OPENED



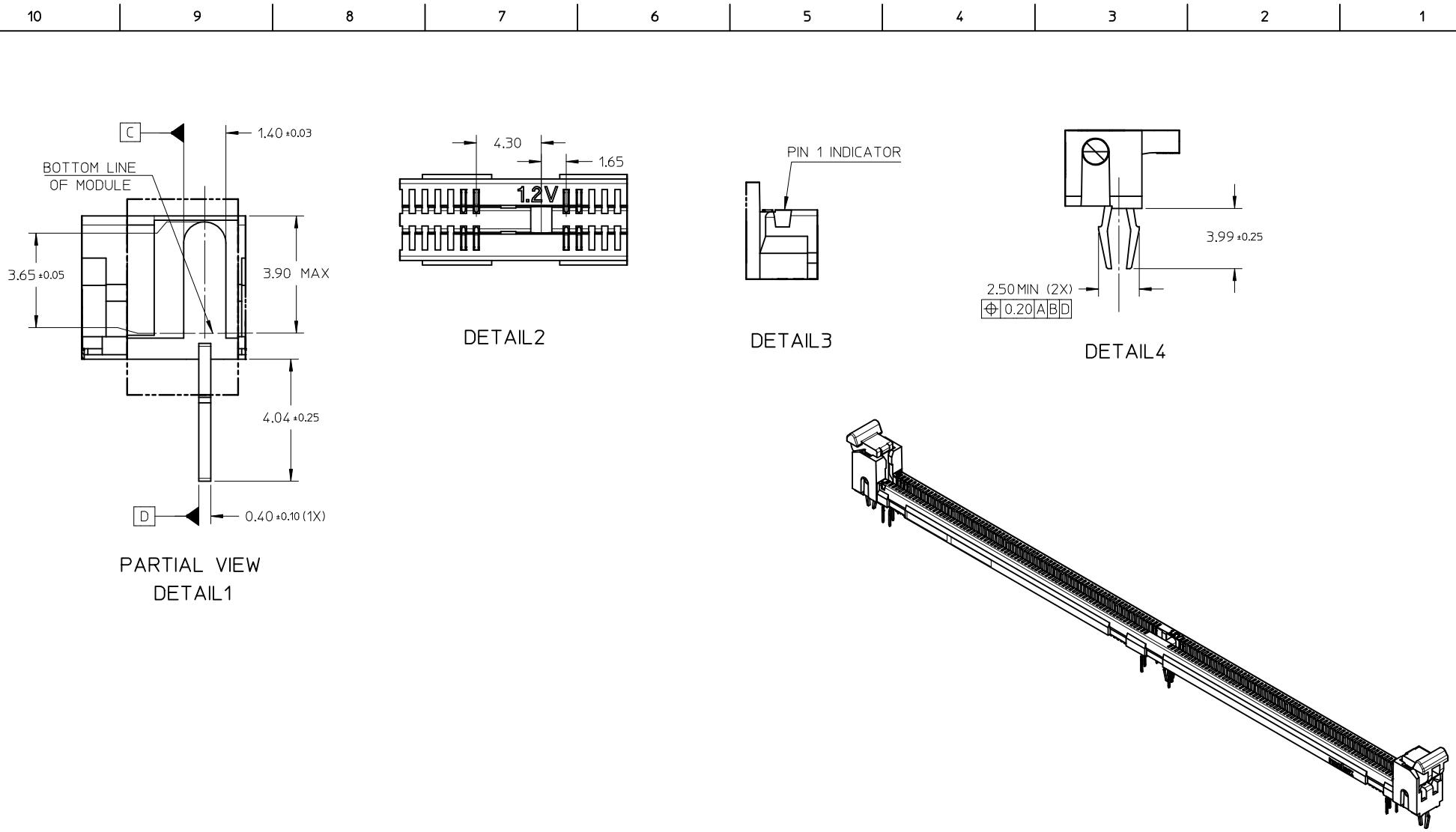
- NOTES:
- MATERIAL: HOUSING - HIGH TEMP NYLON, GLASS FILLED UL 94V-0. COLOR REFER SHEET 3  
LATCH - HIGH TEMP NYLON, GLASS FILLED UL 94V-0. COLOR REFER SHEET 3  
TERMINAL - COPPER ALLOY
  - FINISHES:  
TERMINAL PLATING OPTIONS REFER TABLE ON SHEET 3
  - PRODUCT SPECIFICATION REFER TABLE ON SHEET 3
  - PACKAGING SPECIFICATION REFER TABLE ON SHEET 3
  - CARD SLOT ACCEPTS 1.40 ± 0.10 MM MODULE THICKNESS AS PER JEDEC MO-309

- MOLEX LOGO, DATE CODE IN YYDDXX AND PART NUMBERS INDICATED ON HOUSING
- MODULE SEATING PLANE FROM TOP OF PCB
- AREA RESERVED FOR SOCKET EJECTORS AT BOTH ENDS
- APPLICATION GUIDELINE AS PER AS-78726-001

THIS DESIGN IS BASED ON DESIGN OBJECTIVES AND IS STRICTLY TENTATIVE. IT MAY CHANGE BASED ON RESULTS OF ADDITIONAL DESIGN REVIEWS AND VERIFICATIONS.

UPDATE PART NOS EC NO: S2017-0364 DRWN: VMANICKAM 2016/12/15 CHKD: CCTEH 2016/12/16 APPR: SHLENI 2017/01/04	QUALITY SYMBOLS $F_A=0$ $F_C=0$ $F_P=0$	GENERAL TOLERANCES (UNLESS SPECIFIED)		DIMENSION STYLE MM ONLY		SCALE NTS	DESIGN UNITS METRIC	THIRD ANGLE PROJECTION		
			mm	INCH	DRAWN BY VMANICKAM	DATE 2014/01/09	TITLE DDR4 DIMM, 0.85 PITCH 288 CKT, VERTICAL, T/H VLP, 110SP, LOW LLCR			
		4 PLACES	± ---	± ---	CHECKED BY SHLENI	DATE 2004/11/11	MOLEX INCORPORATED DOCUMENT NO. SD-78860-001 SHEET NO. 1 OF 6			
		3 PLACES	± ---	± ---	APPROVED BY VMANICKAM	DATE 2014/01/13				
2 PLACES	± 0.20	± --	DRAFT WHERE APPLICABLE MUST REMAIN WITHIN DIMENSIONS		SEE TABLE		THIS DRAWING CONTAINS INFORMATION THAT IS PROPRIETARY TO MOLEX INCORPORATED AND SHOULD NOT BE USED WITHOUT WRITTEN PERMISSION			
1 PLACE	± ---	± ---			ANGULAR ± 3 °					

9 8 7 6 5 4 3 2 1

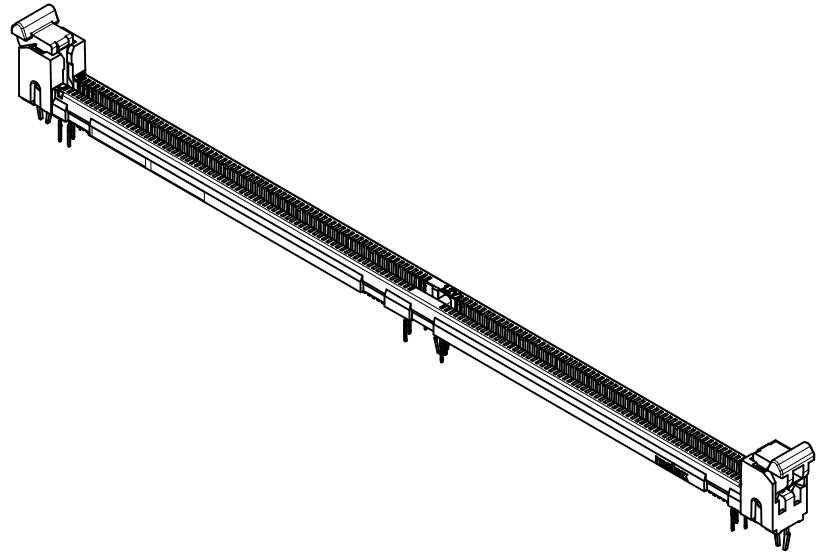


PARTIAL VIEW  
DETAIL1

DETAIL2

DETAIL3

DETAIL4

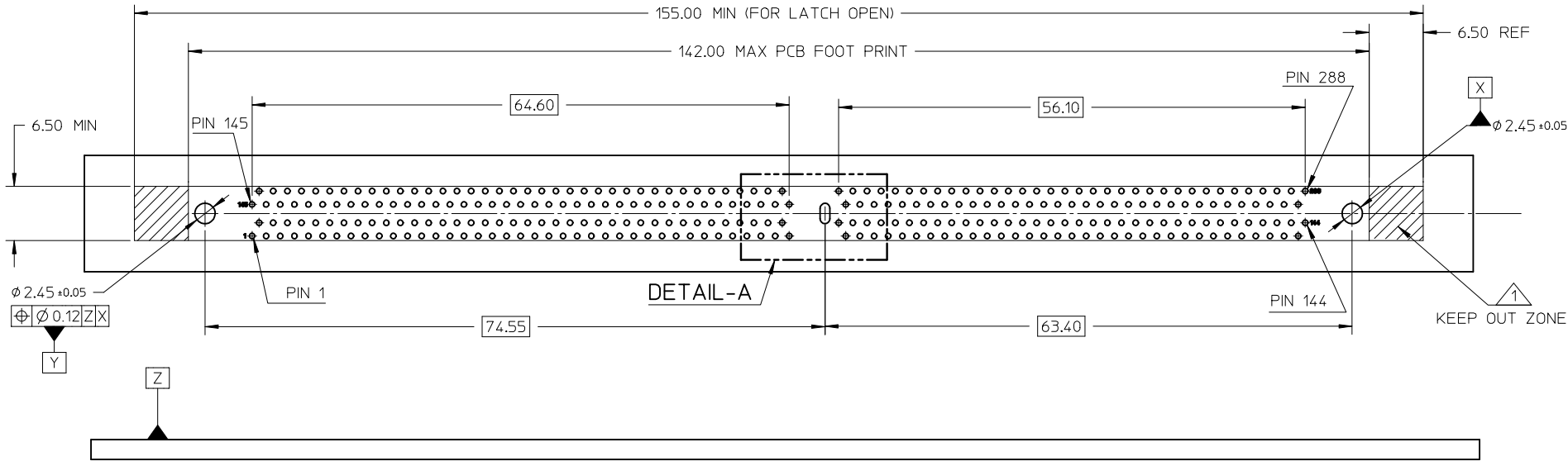


UPDATE PART NOS EC NO: S2017-0364 DRWN: VMANICKAM 2016/12/15 CHKD: CCTH 2016/12/16 APPR: SHLENI 2017/01/04	DESCRIPTION QUALITY SYMBOLS $F_A=0$ $F_C=0$ $F_P=0$	GENERAL TOLERANCES (UNLESS SPECIFIED)		DIMENSION STYLE	SCALE	DESIGN UNITS	THIRD ANGLE PROJECTION		
				MM ONLY	NTS	METRIC			
			mm	INCH	DRAWN BY	DATE	TITLE		
		4 PLACES	± ---	± ---	VMANICKAM	2014/01/09	DDR4 DIMM, 0.85 PITCH 288 CKT, VERTICAL, T/H VLP, 110SP, LOW LLCR		
3 PLACES	± ---	± ---	CHECKED BY	DATE	MOLEX INCORPORATED				
2 PLACES	± 0.20	± ---	SHLENI	2004/11/11					
1 PLACE	± ---	± ---	APPROVED BY	DATE	DOCUMENT NO.				
ANGULAR ± 3 °			VMANICKAM	2014/01/13					
DRAFT WHERE APPLICABLE MUST REMAIN WITHIN DIMENSIONS		SEE TABLE		SD-78860-001		SHEET NO.			
				THIS DRAWING CONTAINS INFORMATION THAT IS PROPRIETARY TO MOLEX INCORPORATED AND SHOULD NOT BE USED WITHOUT WRITTEN PERMISSION		2 OF 6			

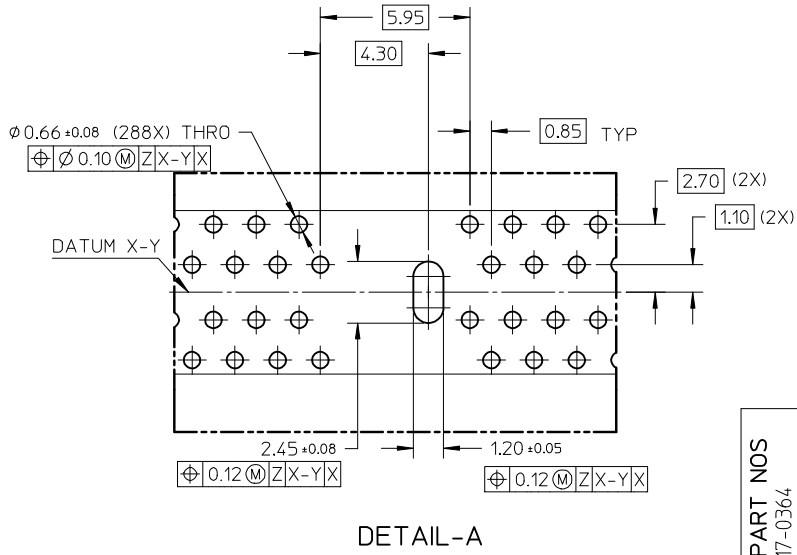
ASSEMBLY PART NO.	HOUSING COLOR	LATCH COLOR	PACKAGING SPEC	DIM 'P' TAIL LENGTH	PRODUCT SPECIFICATION	PLATING OPTION	RECOMMENDED PCB THICKNESS			
78860-1502	BLACK	BLACK	PK-78860-001	3.18 <sup>+0.35</sup> <sub>-0.25</sub>	PS-78860-001	0.38 MICROMETER /15 MICROINCH MIN. GOLD ON CONTACT.  2.54 MICROMETER /100 MICROINCH MIN. PURE MATTE TIN ON SOLDER TAILS OVER  1.27 MICROMETER /50 MICROINCH MIN. NICKEL UNDERPLATE	2.36			
78860-1552		NATURAL (OFF-WHITE)								
78860-1562	NATURAL (OFF-WHITE)									
78860-1566	NATURAL (OFF-WHITE)	BLACK								
78860-1584	BLACK	BLACK								
78860-1594	BLACK	NATURAL (OFF-WHITE)								
78860-1585	NATURAL (OFF-WHITE)	NATURAL (OFF-WHITE)								
78860-1595		BLACK								
78860-3184	BLACK	BLACK		2.95 <sup>+0.35</sup> <sub>-0.25</sub>				PS-78860-002	0.76 MICROMETER /30 MICROINCH MIN. GOLD ON CONTACT. 2.54 MICROMETER /100 MICROINCH MIN. PURE MATTE TIN ON SOLDER TAILS OVER  1.27 MICROMETER /50 MICROINCH MIN. NICKEL UNDERPLATE	2.36
78860-3194		NATURAL (OFF-WHITE)								
78860-3183	NATURAL (OFF-WHITE)									
78860-3193	NATURAL (OFF-WHITE)	BLACK								
78860-3002	BLACK	BLACK	3.18 <sup>+0.35</sup> <sub>-0.25</sub>							
78860-3052		NATURAL (OFF-WHITE)								
78860-3003	NATURAL (OFF-WHITE)	NATURAL (OFF-WHITE)								
78860-3053	NATURAL (OFF-WHITE)	BLACK								

UPDATE PART NOS EC NO: S2017-0364 DRWN: VMANICKAM 2016/12/15 CHKD: CTEH 2016/12/16 APPR: SHLENI 2017/01/04	DESCRIPTION REV	QUALITY SYMBOLS	GENERAL TOLERANCES (UNLESS SPECIFIED)	DIMENSION STYLE MM ONLY	SCALE NTS	DESIGN UNITS METRIC	THIRD ANGLE PROJECTION		
		$F_A=0$ $F_G=0$ $F_P=0$	mm      INCH 4 PLACES ± --- ± --- 3 PLACES ± --- ± --- 2 PLACES ± 0.20 ± --- 1 PLACE ± --- ± --- 0 PLACE ± --- ± ---	DRAWN BY      DATE VMANICKAM      2014/01/09 CHECKED BY      DATE SHLENI      2004/11/11 APPROVED BY      DATE VMANICKAM      2014/01/13	TITLE	DDR4 DIMM, 0.85 PITCH 288 CKT, VERTICAL, T/H VLP, 110SP, LOW LLCR			
		ANGULAR ± 3 ° DRAFT WHERE APPLICABLE MUST REMAIN WITHIN DIMENSIONS	SEE TABLE	MATERIAL NO. DOCUMENT NO.	<b>molex</b> SD-78860-001				
			SIZE A3	THIS DRAWING CONTAINS INFORMATION THAT IS PROPRIETARY TO MOLEX INCORPORATED AND SHOULD NOT BE USED WITHOUT WRITTEN PERMISSION					
									SHEET NO. 3 OF 6

RECOMMENDED PCB FOOT PRINT  
ALL DIMENSIONS AS PER JEDEC SO-016



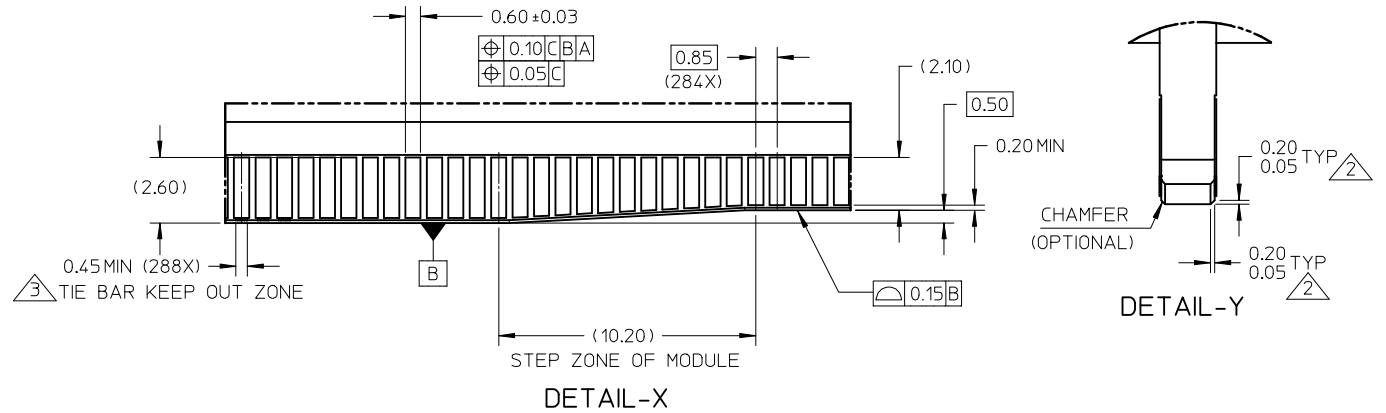
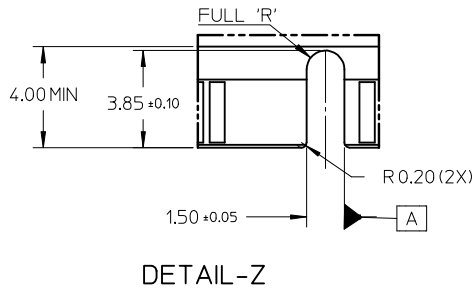
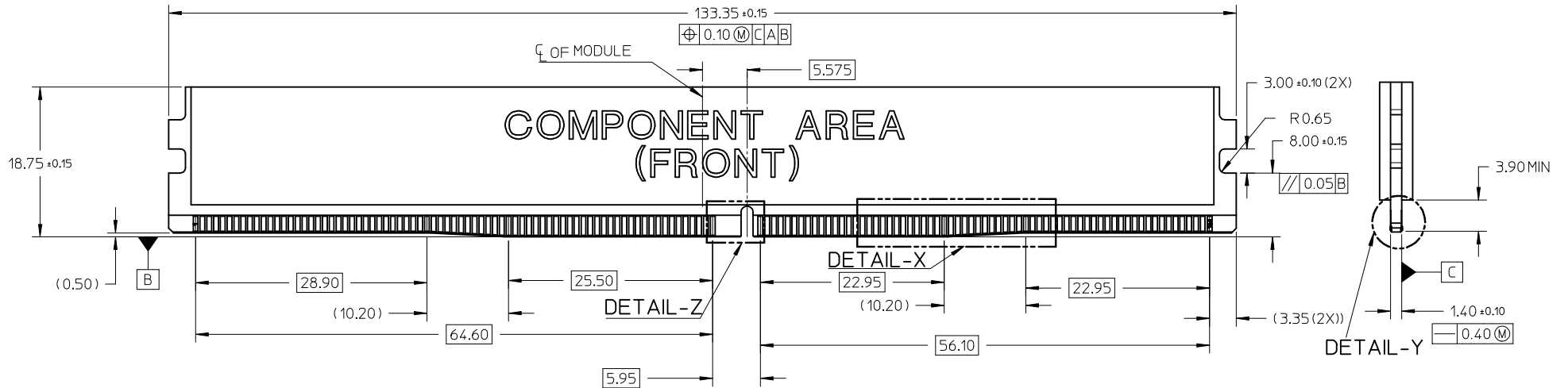
△ KEEP OUT ZONE LIMITED AS PER NOTE △ OF SOCKET IN SHEET 1



RECOMMENDED PCB THICKNESS 2.36 MM

UPDATE PART NOS EC NO: S2017-0364 DRWN:VMANICKAM 2016/12/15 CHKD:CCTEH 2016/12/16 APPR:SHLENI 2017/01/04	QUALITY SYMBOLS $\nabla F = 0$ $\nabla F = 0$ $\nabla F = 0$	GENERAL TOLERANCES (UNLESS SPECIFIED) mm INCH 4 PLACES ± --- ± --- 3 PLACES ± --- ± --- 2 PLACES ± 0.20 ± --- 1 PLACE ± --- ± --- 0 PLACE ± --- ± --- ANGULAR ± 3 ° DRAFT WHERE APPLICABLE MUST REMAIN WITHIN DIMENSIONS	DIMENSION STYLE MM ONLY DRAWN BY: VMANICKAM CHECKED BY: SHLENI APPROVED BY: VMANICKAM MATERIAL NO.: SEE TABLE	SCALE NTS DESIGN UNITS METRIC THIRD ANGLE PROJECTION	DATE: 2014/01/09 DATE: 2004/11/11 DATE: 2014/01/13 DOCUMENT NO.: SD-78860-001	TITLE DDR4 DIMM, 0.85 PITCH 288 CKT, VERTICAL, T/H VLP, 110SP, LOW LLCR <b>molex</b>	SHEET NO. 4 OF 6
	THIS DRAWING CONTAINS INFORMATION THAT IS PROPRIETARY TO MOLEX INCORPORATED AND SHOULD NOT BE USED WITHOUT WRITTEN PERMISSION		SIZE A3		SHEET NO. 4 OF 6		

RECOMMENDED DDR4 MODULE LAYOUT AS PER MO-309



- RECOMMENDED PLATING FOR CONTACT PADS  
 PREFERRED: 0.76 MICROMETERS GOLD PLATING MN  
 OVER 2.00 MICROMETERS NICKEL  
 ALTERNATIVE: 0.05 TO 0.75 MICROMETERS GOLD PLATING  
 OVER 2.00 MICROMETERS NICKEL MUST USE  
 AN ELECTRONIC CONTACT GRADE CORROSIVE  
 BARRIER LUBRICANT
- CHAMFER IS OPTIONAL AND IS NOT TO HIT THE GOLD PADS
- LEADING EDGE OF THE GOLD PADS SPECIFIED BY KEEPOUT ZONE  
 SHALL BE FREE OF BURRS AND EXTERNAL TIE BARS

UPDATE PART NOS EC NO: S2017-0364 DRWN: VMANICKAM 2016/12/15 CHKD: CCTEH 2016/12/16 APPR: SHLENI 2017/01/04	QUALITY SYMBOLS $F_A=0$ $F_C=0$ $F_P=0$	GENERAL TOLERANCES (UNLESS SPECIFIED)		DIMENSION STYLE MM ONLY		SCALE NTS	DESIGN UNITS METRIC	THIRD ANGLE PROJECTION			
		mm	INCH	DRAWN BY	DATE	TITLE					
		4 PLACES ± --- ± ---	3 PLACES ± --- ± ---	2 PLACES ± 0.20 ± ---	1 PLACE ± --- ± ---	0 PLACE ± --- ± ---	VMANICKAM	2014/01/09	DDR4 DIMM, 0.85 PITCH 288 CKT, VERTICAL, T/H VLP, 110SP, LOW LCCR		
		ANGULAR ± 3 °		DRAFT WHERE APPLICABLE MUST REMAIN WITHIN DIMENSIONS		SEE TABLE		MATERIAL NO. DOCUMENT NO. SHEET NO. SD-78860-001 6 OF 6			
THIS DRAWING CONTAINS INFORMATION THAT IS PROPRIETARY TO MOLEX INCORPORATED AND SHOULD NOT BE USED WITHOUT WRITTEN PERMISSION											