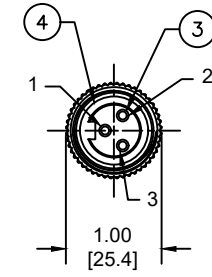
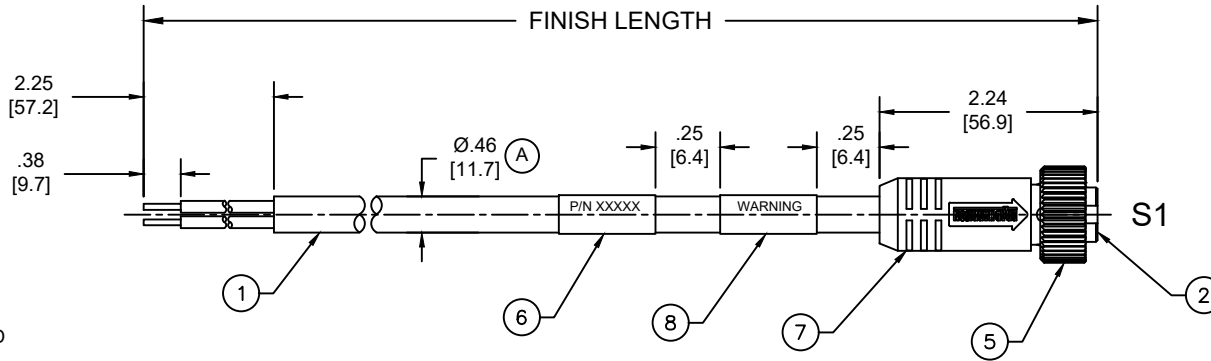
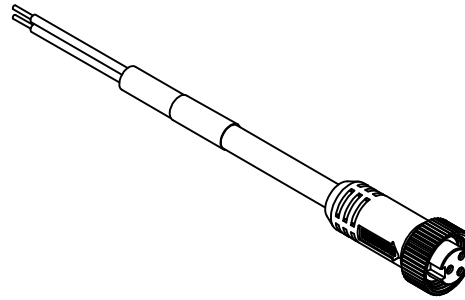


| MATERIAL NUMBER | ENGINEERING NUMBER | FINISHED LENGTH |
|-----------------|--------------------|------------------|
| 1300610024 | 103000A45M010 | 1M [3FT 3 IN] |
| 1300610028 | 103000A45M100 | 10M [32FT 10 IN] |
| 1300610232 | 103000A45M300 | 30M [98FT 5 IN] |

(A) PART NUMBER LEGEND

103000A45M010

LENGTH:
M005= 0.5 METER
M010= 1 METER
M100= 10 METER

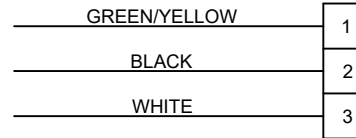


FACE VIEW FEMALE

NOTES:

- MATERIAL: AS NOTED
- FINISH: AS NOTED
- ELECTRICAL:
 - VOLTAGE: 500V PER IEC60664 (A)
 - 600V PER UL2237
 - CURRENT: 13A
- TEMP RATING: -20°TO +90°C
- PROTECTION: IP67 (WHEN MATED)
- COUPLING THREAD: 7/8"-16UN
- UL LISTED FILE: E258922
- ALL DIMENSIONS ARE FOR REFERENCE UNLESS TOLERANCED OR NOTED OTHERWISE

S1



WIRING DIAGRAM

(A)

| CABLE LENGTH TOLERANCES | |
|--------------------------|-------------------------|
| <.3M [1FT]: | +19mm-0 [+ .75in-0] |
| .3 - .9M [1 - 3FT]: | +44.5mm-0 [+1.75in-0] |
| .9 - 1.8M [3 - 6FT]: | +55.6mm-0 [+2.19in-0] |
| 1.8 - 3.7M [6 - 12FT]: | +88.9mm-0 [+3.50in-0] |
| 3.7 - 7.3M [12 - 24FT]: | +165.1mm-0 [+6.50in-0] |
| 7.3-14.6M [24 - 48FT]: | +317.5mm-0 [+12.50in-0] |
| 14.6 - 30.5M [48-100FT]: | +622.3mm-0 [+24.50in-0] |
| OVER 30M [100FT] | +2% OF FINISHED LENGTH |

| 8 | WARNING LABEL | VINYL | BLACK/ORANGE |
|------|-------------------|--------------|------------------|
| 7 | OVERMOLD | TPE | GRAY |
| 6 | WRAP LABEL | VINYL | BLACK/YELLOW |
| 5 | COUPLING NUT | ZINC ALLOY | BLACK E-COAT |
| 4 | FRICITION RING | NYLON | WHITE |
| 3 | CONTACT SOCKET | COPPER ALLOY | GOLD OVER NICKEL |
| 2 | INSERT | TPE | BLACK |
| 1 | CABLE #16/3 STOOV | PVC JACKET | GRAY |
| ITEM | DESCRIPTION | MATERIAL | FINISH |

| | | | | |
|--|---|------------------------|--|-----------------|
| FUNCTIONAL SYMBOLS FA=0 FC=0 FE=0 | THIS DRAWING CONTAINS INFORMATION THAT IS PROPRIETARY TO MOLEX ELECTRONIC TECHNOLOGIES, LLC AND SHOULD NOT BE USED WITHOUT WRITTEN PERMISSION | | CURRENT REV DESC: ITEM 2 & 7 WERE PVC. ADDED IEC VOLTAGE, PN LEGEND, CABLE DIA & TOL CHART. MODIFIED ITEM-4 FINISH AND PN TABLE. | |
| | DIMENSION UNITS | SCALE | EC NO: 704134 | |
| | INCH/MM | NTS | DRWN: ABENJAMINLW | 2021/06/09 |
| | GENERAL TOLERANCES (UNLESS SPECIFIED) | | CHK'D: RSTONE | 2022/04/27 |
| DIVISIONAL SYMBOLS | 4 PLACES | ±---- | APPR: BWOODMAN | 2022/05/04 |
| | 3 PLACES | ±---- | INITIAL REVISION: | |
| | 2 PLACES | ±---- | DRWN: VOU | 2010/01/11 |
| | 1 PLACE | ±---- | APPR: JFMURPHY | 2010/01/20 |
| 0 PLACES | ±---- | THIRD ANGLE PROJECTION | | |
| ANGULAR TOL ± ---- ° | | DRAWING | SERIES | MATERIAL NUMBER |
| DRAFT WHERE APPLICABLE MUST REMAIN WITHIN DIMENSIONS | | A-SIZE | 130061 | SEE CHART |

| | | | |
|--|----------|--------------|----------|
| molex | | | |
| BRAD POWER CORDSET, A-SIZE 3-POLE, FEMALE, STRAIGHT, SINGLE KEY, #16 AWG | | | |
| PRODUCT CUSTOMER DRAWING | | | |
| DOCUMENT NUMBER | DOC TYPE | DOC PART | REVISION |
| SD-130061-005 | PSD | 001 | A |
| CUSTOMER | | SHEET NUMBER | |
| GENERAL MARKET | | 1 OF 1 | |

| | | | | |
|-----------------|----|--------------|------------|----------|
| DOCUMENT STATUS | P1 | RELEASE DATE | 2022/05/04 | 21:13:44 |
|-----------------|----|--------------|------------|----------|