

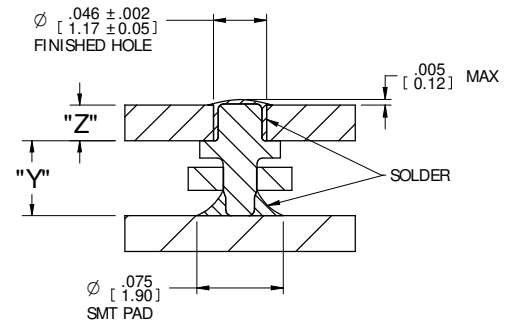
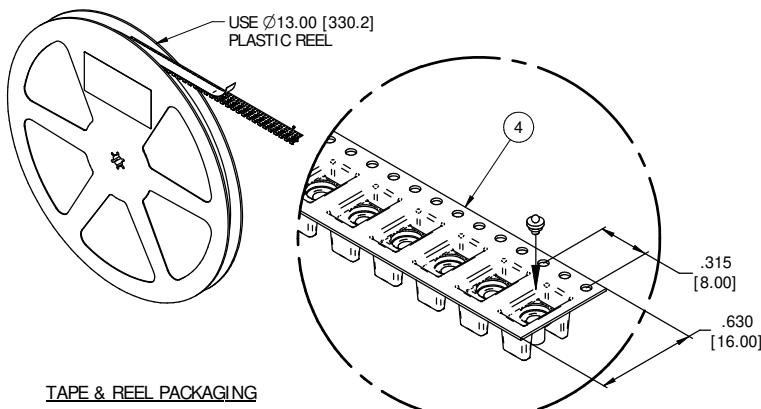
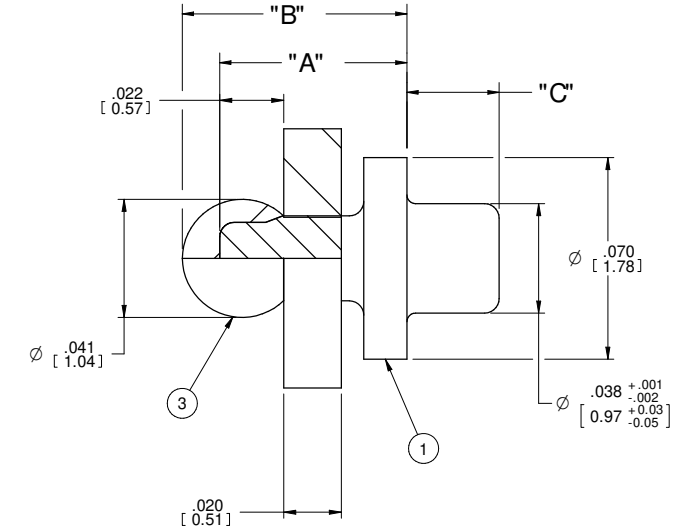
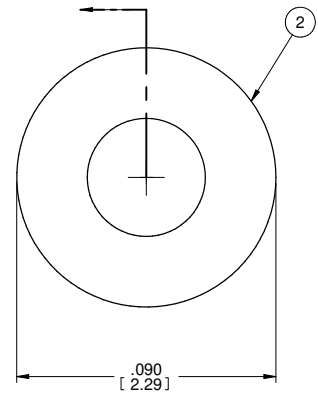
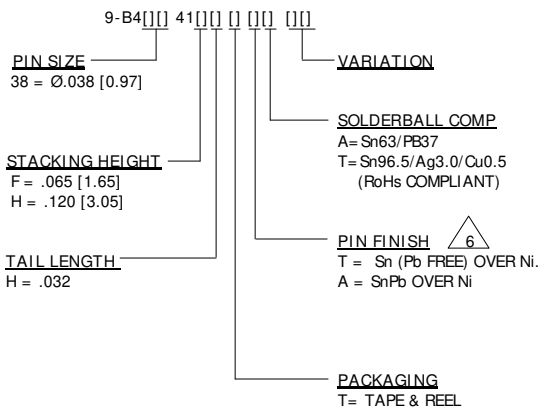
NOTES: UNLESS OTHERWISE SPECIFIED

- INTERPRET DRAWING IN ACCORDANCE WITH ASME Y14.5M -1994.
- PARTS TO BE PACKAGED IN TAPE & REEL PER EIA STD-481.
- MATERIALS: PIN= COPPER; INSULATOR= FR-4 GLASS EPOXY; SOLDERBALL MATERIAL= SnPb (BLACK) & Pb FREE (BLUE).
- RECOMMENDED PICK HEIGHT: .022 [0.56] FROM TOP OF POCKET.
- SOLDERABILITY PER IPC/EIA J-STD-002, TEST A, CATEGORY 3.
- PREPROCESSED COPPER PIN TO BE PLATED WITH 300μ"-500μ" [7.60μm-12.7μm] THICK MATTE Sn (Pb FREE) OR SnPb OVER 100μ"-200μ" [2.54μm-5.08μm] Ni, INSPECTED PER AUTOSPlice WORK INSTRUCTION 4.10-14 REV 'A'.

PART NUMBER LIST							
PART NUMBER	"A"	"B"	"C"	"Y"	"Z" MIN	INSULATOR COLOR	QTY/REEL
9-B43841FHHTA	.065 [1.65]	.078±.004 [1.98±0.10]	.032+.000/-0.002 [0.81+0.00/-0.05]	.070 [1.78]	.042 [1.06]	BLACK	2,000± 15%
9-B43841FHHTT						BLUE	
9-B43841HHHTA	.120 [3.05]	.133±.004 [3.38±0.10]		.125 [3.18]		BLACK	1,700± 15%
9-B43841HHHTT						BLUE	
9-B43841HHHTAA						BLACK	

REV	REVISION RECORD	ECN	BY	APVD	DATE
A	INITIAL RELEASE	505122	HR	PVB	09/20/07
B	CHANGE "HOLE SIZE" TO "PIN SIZE"	505224	HR	PVB	12/18/07
C	ADD P/N PER EWR105675	505160	HR	PVB	01/29/08
D	CHANGE PLATING NOTE PER EWR106140	505527	HR	PVB	9/4/2008
E	CHANGE PLATING NOTE PER EWR106568	505810	RUB	PVB	7/10/2009
F	ADDED P/N 9-B3841HHHTAA & ADDED "A" TO PIN FINISH PER EWR 107154	506197	KR	PVB	3/7/2011
G	NOTE 6 ADDED "OR SnPb"	506212	KR	PVB	3/23/2011

PART NUMBER BREAKDOWN



- MATERIAL:**
- PIN: COPPER
 - INSULATOR: FR-4 GLASS FILLED EPOXY
 - SOLDERBALL: SnPb (BLACK) & Sn (BLUE) Pb FREE
 - PACKAGING TAPE: ANTI-STATIC, CONDUCTIVE POLYSTYRENE, COLOR: BLACK

CUSTOMER DRAWING

TOLERANCES UNLESS OTHERWISE SPECIFIED DIMENSIONS IN INCHES

DECIMAL: .XX ± .01	[XX] ± [0.3]
XXX ± .005	[XXX] ± [0.13]
ANGULAR: ± 5°	

Autosplice, Inc. 10121 Barnes Canyon Rd. San Diego, CA 92121-2725 858.555.0077

THE ANGLE PROJECTION IS FIRST ANGLE

DESIGNED BY: HR ENGINEERED BY: H REYNOLDS DATE: 12/01/07

TITLE: STD SOLDERBALL PIN ASSEMBLY

DATE: 2011 CAD NO: C9-B43841TTT112 PCB MODEL NO: 9-B43841TTT112 REV: 01 SHEET 1 OF 1