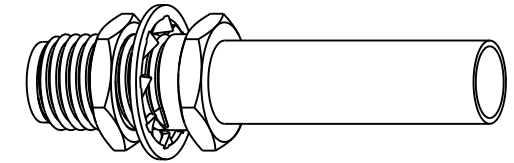


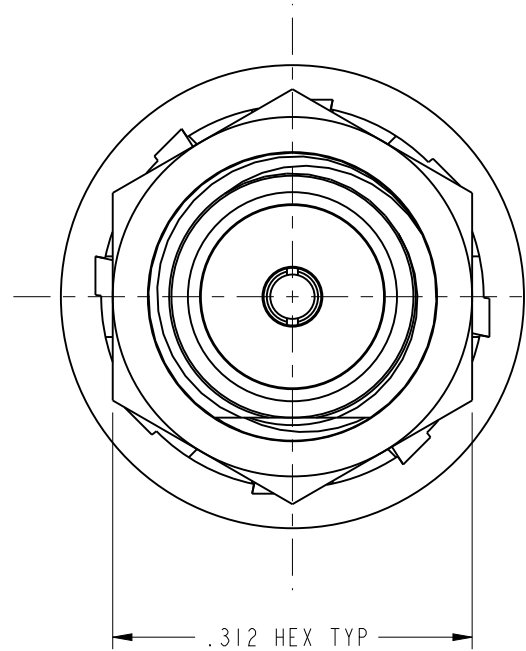
NOTES:

1. DO NOT SCALE THIS DRAWING.
2. MATERIAL AND FINISH:
 CONTACT: BERYLLIUM COPPER, GOLD PLATED
 FERRULE: ANNEALED COPPER, NICKEL PLATED
 INSULATOR: PTFE
 OTHER METAL PARTS: STAINLESS STEEL, PASSIVATED
3. ELECTRICAL:
 A. IMPEDANCE: 50 OHM
 B. FREQUENCY RANGE: DC - 12.4 GHz
 C. VSWR(RETURN LOSS): 1.40 , MAX @ 12.4 GHz.
 1.06 , MAX @ 3.5 GHz.
 D. DIELECTRIC WITHSTANDING VOLTAGE: 1000 VRMS, MIN.
4. CRIMP USING TOOL 227-944, DIE SET 227-1221-62, CAVITY "A" (.151 HEX).

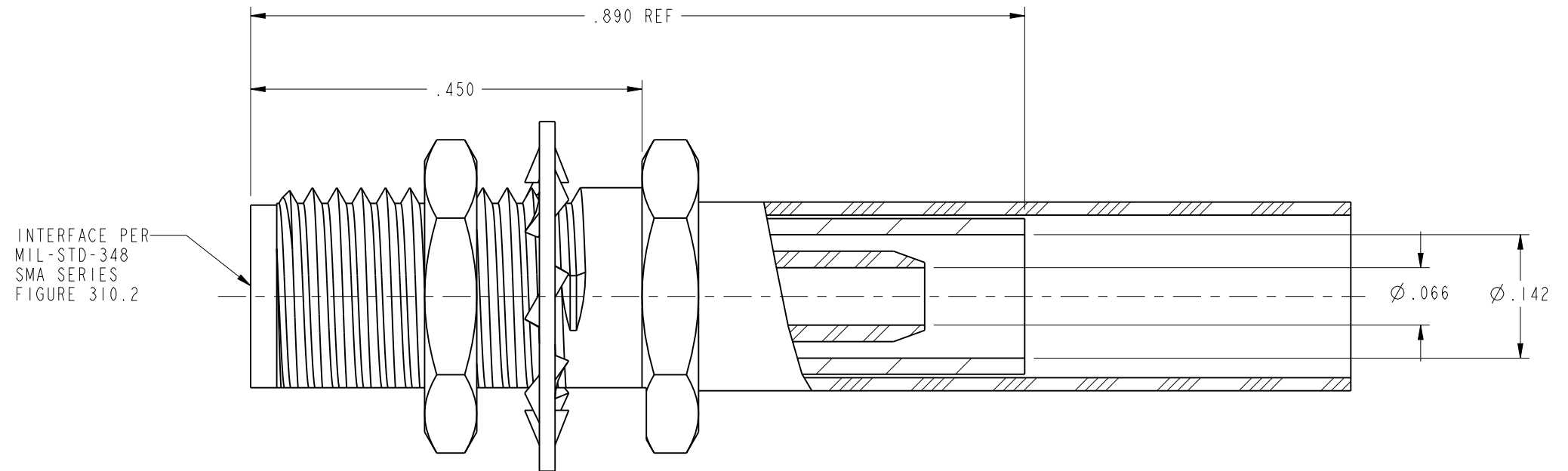
901-10021-12SF		REVISIONS			
DRAWING NO.	REV	DESCRIPTION	DATE	ECO	APPR
THIRD ANGLE PROJ.	A	RELEASE TO MFG.	16-Dec-99	43201	PB/TA
	B	ADDED NOTE 3 & MOUNTING HOLE DIMENSIONS	5/19/11	48595	RAK



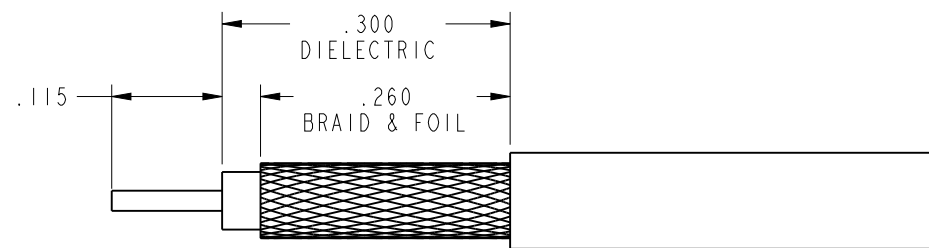
SCALE 2.000



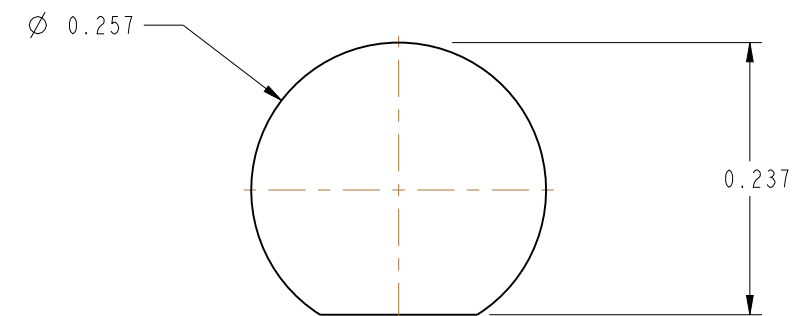
.312 HEX TYP



INTERFACE PER MIL-STD-348 SMA SERIES FIGURE 310.2



RECOMMENDED CABLE STRIPPING DIMENSIONS



RECOMMENDED MOUNTING HOLE DIMENSION

CUSTOMER OUTLINE DRAWING

ALL OTHER SHEETS ARE FOR INTERNAL USE ONLY

UNLESS OTHERWISE SPECIFIED, DIMENSIONS ARE IN INCHES AND TOLERANCES ARE: 2 PLACE DECIMAL ±.015 (0,381 mm) 3 PLACE DECIMAL ±.005 (0,127 mm) ANGLES ± 1°	MATERIAL	DRAWN P. BRENZEL	DATE 07-Dec-99	TITLE SMA BULKHEAD JACK FOR RD-316/U CABLE	Amphenol Amphenol Corporation Communication and Network Products Division Danbury, CT U.S.A. 06810			
	REFERENCE EAR 102-967285 I 615X-1543-100	ENGINEER P. BRENZEL	DATE 07-Dec-99			SCALE: 6.0:1	SHEET 2 OF 2	
NOTICE - These drawings, specifications, or other data (1) are, and remain the property of Amphenol Corp. (2) must be returned upon request; and (3) are confidential and not to be disclosed to any person other than those to whom they are given by Amphenol Corp. The furnishing of these drawings, specifications, or other data by Amphenol Corp., or to any other person to anyone for any purpose is not to be regarded by implication or otherwise in any manner licensing, granting rights or permitting such holder or any other person to manufacture, use or sell any product, process or design, patented or otherwise, that may in any way be related to or disclosed by said drawings, specifications, or other data.		APPROVED	DATE	CAD FILE I:\SMA\901-10021-12SF	CODE ID 74868	DWG SIZE B	DRAWING NO. 901-10021-12SF	REV B