

LTC4451 40V, 7A Low Quiescent Current Ideal Diode with Shutdown Mode

DESCRIPTION

Demonstration Circuit 3001A-B showcases the **LTC®4451** ideal diode controller with an integrated low $R_{DS(ON)}$ MOSFET. The board includes two independent LTC4451 ideal diodes sharing a common ground and operates over a range of 0V to 40V, carrying up to 8A at 25°C ambient temperature. The board can be set up in a diode-OR configuration by connecting the output channels together.

NOTE: Although the DC3001A-B can carry 8A at 25°C, the LTC4451 is designed for a max current of 7A across –40°C to 125°C. Please follow the data sheet recommendations to design your application across the operating temperature range.

[Design files for this circuit board are available.](#)

All registered trademarks and trademarks are the property of their respective owners.

PERFORMANCE SUMMARY Specifications are at $T_A = 25^\circ\text{C}$

PARAMETER	CONDITIONS	MIN	TYP	MAX	UNITS
Input Voltages: VINX	Operating DC Survival	2.75 –0.3		40 45	V V
Supply Voltages: VOUTX, SHDN, STATX	DC Survival	–0.3		45	V
Operating Supply Range: VCCX	Operating DC Survival	2.75 –0.3		5.5 6	V V
Operating Current Capability	$2.75\text{V} \leq \text{VINX} \leq 18\text{V}$ $2.75\text{V} \leq \text{VCCX} \leq 5.5\text{V}$			8 8	A A

BOARD PHOTO

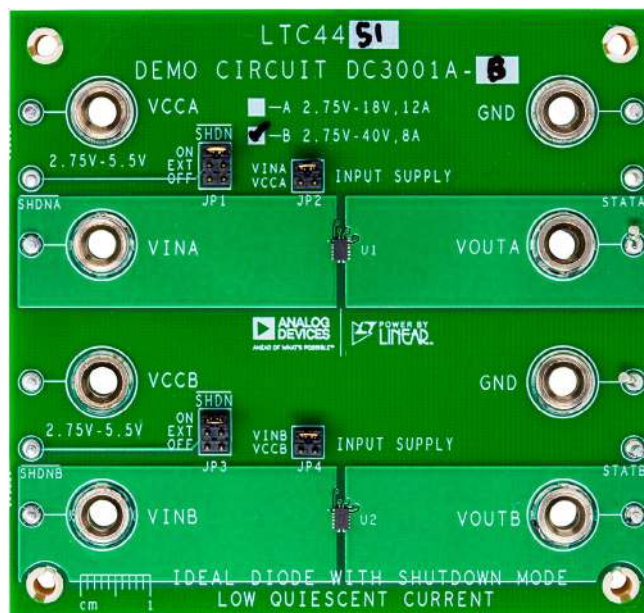


Figure 1. DC3001A-B Demo Board

QUICK START PROCEDURE

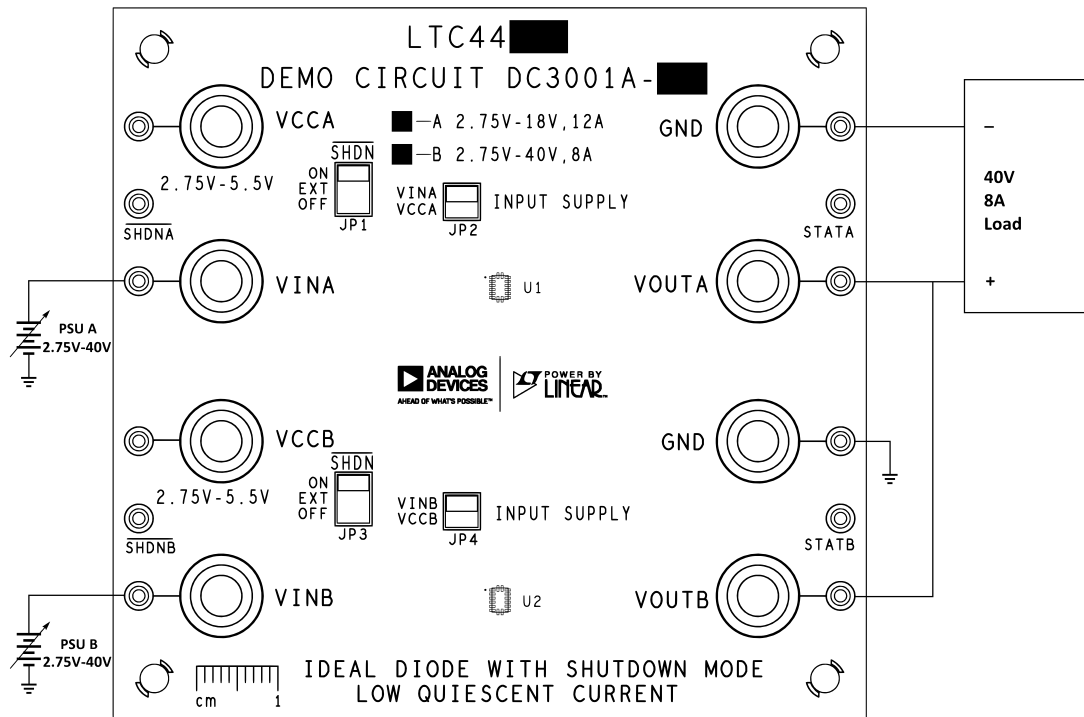


Figure 2. Basic Diode-OR Test Circuit

A simple demonstration of the DC3001A-B's operation is as follows (refer to Figure 2).

1. You will need two adjustable power supply units. Connect one supply to VINA and the nearby GND, and the other supply to VINB and GND.
2. Set both supplies to 12V.
3. Set the $\overline{\text{SHDN}}$ jumpers to ON position. Set the INPUT SUPPLY jumpers to VINX.
4. Join the outputs of VOUTA and VOUTB. Connect the shared outputs to a constant current load, and set it to draw up to 8A.
5. Slowly adjust one supply up and down relative to the other while monitoring the power supply currents. The higher supply will carry the load current. There is a narrow transition region, where if VINA and VINB are nearly identical, the supplies will droop share.
6. Decrease the voltage on one of the supplies to 0V. Notice the output voltage does not collapse. The other supply carries the load. See Figure 3 for a scope-shot illustrating this concept.

QUICK START PROCEDURE



Figure 3. Diode-OR Using Figure 2. VINB's Voltage Drops Out, VOUT Settles to VINA, which Carries the Load



Figure 4. Diode-OR Using Figure 2. VINB Ramps to Higher Voltage than VINA. VOUT Follows VINB, which Supplies the Full Load Current

QUICK START PROCEDURE

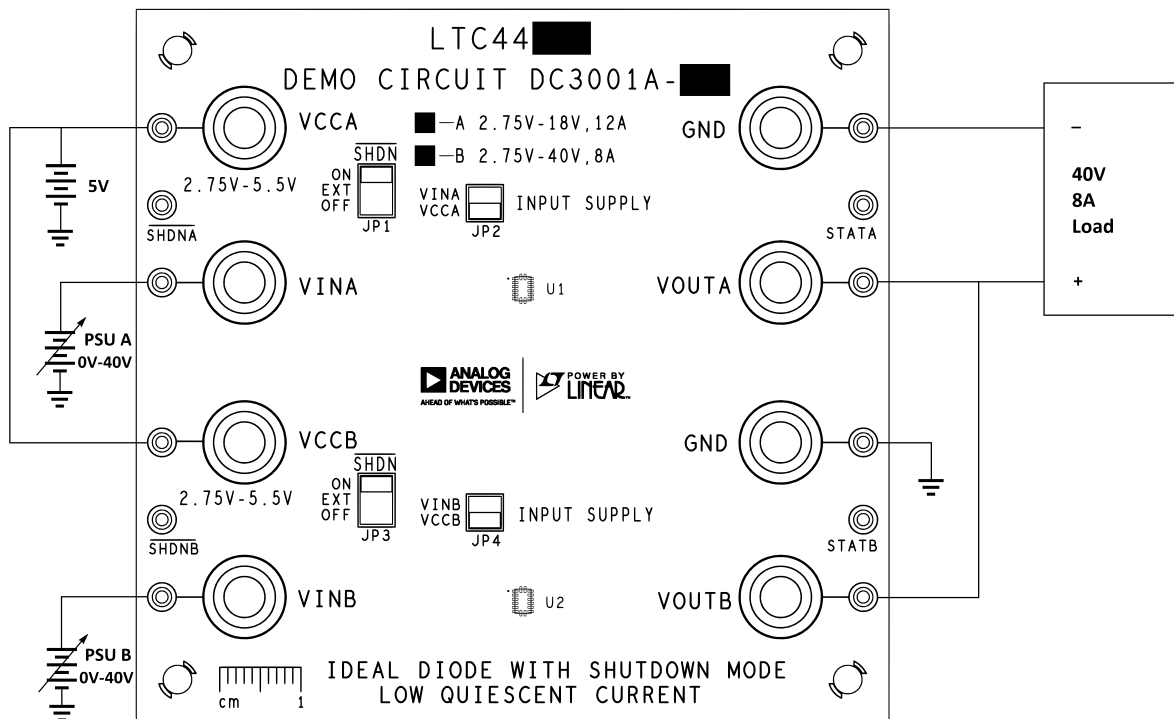


Figure 5. Separate VCC Supply for Low Voltage Operation

On Figure 5, the diode-OR test circuit from the previous exercise is configured to allow for diode operation with lower voltages on VINA and VINB. This is possible because of the separate 5V supply on VCCA and VCCB

providing power to the LTC4451. Note that the INPUT SUPPLY jumpers must be changed from VINX to VCCX for this to work.



Figure 6. Low Voltage, Diode-OR Using Figure 5. VINB's Voltage Drops Out, VOUT Settles to VINA, Which Carries the Load

BOARD DESCRIPTION

Overview

The DC3001A-B features two independent LTC4451 ideal diode circuits sharing a common ground. Each channel can handle up to 8A at room temperature with no airflow. Reference designators are duplicated for the two sections of the board; the upper section is suffixed A while the lower section is suffixed B.

NOTE: The LTC4451 is a 7A part when operating across temperature.

Voltage and Current Capability

The internal MOSFET of the LTC4451 can safely conduct 8A at 40V in open air, provided the part is enabled and operating at room temperature. When the part is in shutdown, the internal MOSFET is turned off; however, forward current can still flow through body diode of the internal MOSFET. The LTC4451 can operate from $V_{IN} = 2.75V$ to $V_{IN} = 40V$. If an application demands the LTC4451 to operate for V_{IN} below 2.75V and down to 0V, move the INPUT SUPPLY jumper to VCCX and connect an external supply greater than 2.75V to VCC.

Input Shorts

While the LTC4451 is built to withstand sudden input shorts to ground, damage may occur to the internal MOSFET under certain extreme operating conditions. In situations where parasitic inductance and the load capacitance are very large (several μH 's and hundreds of μF 's) IN and OUT can ring beyond their safe operating zones due to the brief window of reverse current. As an added safety measure to protect against such an event, it's recommended to connect a 40V zener diode to the output when testing input shorts. (see Figure 7)

Shutdown

The LTC4451 may be shut down by moving the JP1 or JP3 jumpers to the OFF position, which ties the \overline{SHDN} pin to GND. Shutdown mode reduces the quiescent current to $\sim 1.5\mu A$. In the ON position, the \overline{SHDN} pin is tied to the V_{IN} pin, enabling LTC4451. In the EXT position, the \overline{SHDN} pin is connected to the \overline{SHDN} turret. It is important to note that shutting down the LTC4451 does not interrupt the forward current path. Even when the LTC4451 is in shutdown mode, the internal MOSFET body diode is still present and will conduct forward current.

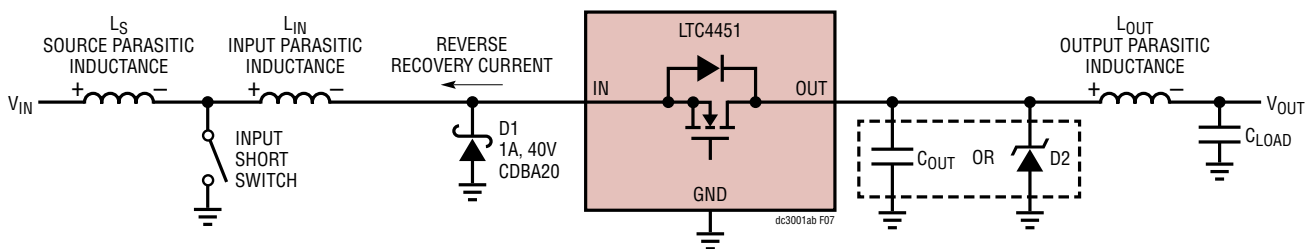


Figure 7. Input Short Protection with Parasitic Inductances

BOARD DESCRIPTION

EXTERNAL CONNECTIONS

GND (2 Turrets, 2 Banana Jacks): Main ground reference of the board. All connections are made directly to the ground plane.

SHDNA (1 Turret): Shutdown digital control input. Driving this pin below 400mV disables the internal MOSFET of U1 and enters the part into a low I_Q state. When driven low, a connection from IN to OUT still exists through the internal body diode.

SHDNB (1 Turret): Shutdown digital control input. Driving this pin below 400mV disables the internal MOSFET of U2 and enters the part into a low I_Q state. When driven low, a connection from IN to OUT still exists through the internal body diode.

STATA (1 Turret): Gate status output pin for the circuit located on the upper section of the board. STATA pulls low when the gate of the N-Channel MOSFET is pulled low, indicating that the LTC4451 operates in reverse bias or in shutdown. Otherwise, STATA pulls high, indicating that the LTC4451 is operating in forward bias.

STATB (1 Turret): Gate status output pin for the circuit located on the lower section of the board. STATB pulls low when the gate of the N-Channel MOSFET is pulled low, indicating that the LTC4451 operates in reverse bias or in shutdown. Otherwise, STATB pulls high, indicating that the LTC4451 is operating in forward bias.

VCCA (1 Turret, 1 Banana Jack): Input voltage connection for the LTC4451 located on the upper section of the board. JP2 jumper should be set at VCCA for this turret and banana jack to make a connection with the V_{CC} pin of the LTC4451. VCCA is the separate power connection for the LTC4451, which allows diode operation down to 0V on VINA.

VCCB (1 Turret, 1 Banana Jack): Input voltage connection for the LTC4451 located on the lower section of the board. JP4 jumper should be set at VCCB for this turret and banana jack to make a connection with the V_{CC} pin of the LTC4451. VCCB is the separate power connection for the LTC4451, which allows diode operation down to 0V on VINB.

VINA (1 Turret, 1 Banana Jack): Input voltage connection for the LTC4451 located on the upper section of the board. Power can be supplied to the LTC4451 from this input by setting JP2 to VINA.

VINB (1 Turret, 1 Banana Jack): Input voltage connection for the LTC4451 located on the lower section of the board. Power can be supplied to the LTC4451 from this input by setting JP4 to VINB.

VOUTA (1 Turret, 1 Banana Jack): Output voltage connection for the LTC4451 located on the upper section of the board.

VOUTB (1 Turret, 1 Banana Jack): Output voltage connection for the LTC4451 located on the lower section of the board.

BOARD DESCRIPTION

JUMPER SETTINGS

JP1 (Default Setting: ON): Controls the $\overline{\text{SHDN}}$ pin state for the LTC4451 circuit located on the upper section of the board. This jumper can be set to:

1. ON, which pulls up the $\overline{\text{SHDN}}$ pin to VINA and turns on the MOSFET whenever VINA is present.
2. EXT, to facilitate an external connection via $\overline{\text{SHDNA}}$ turret.
3. OFF, which pulls down the $\overline{\text{SHDN}}$ pin to GND and switches off the MOSFET (body diode of the MOSFET will still conduct current).

JP2 (Default Setting: VINA): Controls the V_{CC} pin state for the LTC4451 circuit located on the upper section of the board. This jumper can be set to:

1. VCCA, which will connect the V_{CC} pin of the IC to the VCCA banana jack and turret, where this pin can be driven using an external power supply. This enables diode operation down to 0V.
2. VINA, which connects the V_{CC} pin of the IC to ground.

JP3 (Default Setting: ON): Controls the $\overline{\text{SHDN}}$ pin state for the LTC4451 circuit located on the lower section of the board. This jumper can be set to:

1. ON, which pulls up the $\overline{\text{SHDN}}$ pin to VINB and turns on the MOSFET whenever VINB is present.
2. EXT, to facilitate an external connection via $\overline{\text{SHDNB}}$ turret.
3. OFF, which pulls down the $\overline{\text{SHDN}}$ pin to GND and switches off the MOSFET (body diode of the MOSFET will still conduct current).

JP4 (Default Setting: VINB): Controls the V_{CC} pin state for the LTC4451 circuit located on the lower section of the board. This jumper can be set to:

1. VCCB, which will connect the V_{CC} pin of the IC to the VCCB banana jack and turret, where this pin can be driven using an external power supply. This enables diode operation down to 0V.
2. VINB, which connects the V_{CC} pin of the IC to ground.

DEMO MANUAL

DC3001A-B



ESD Caution

ESD (electrostatic discharge) sensitive device. Charged devices and circuit boards can discharge without detection. Although this product features patented or proprietary protection circuitry, damage may occur on devices subjected to high energy ESD. Therefore, proper ESD precautions should be taken to avoid performance degradation or loss of functionality.

Legal Terms and Conditions

By using the evaluation board discussed herein (together with any tools, components documentation or support materials, the "Evaluation Board"), you are agreeing to be bound by the terms and conditions set forth below ("Agreement") unless you have purchased the Evaluation Board, in which case the Analog Devices Standard Terms and Conditions of Sale shall govern. Do not use the Evaluation Board until you have read and agreed to the Agreement. Your use of the Evaluation Board shall signify your acceptance of the Agreement. This Agreement is made by and between you ("Customer") and Analog Devices, Inc. ("ADI"), with its principal place of business at One Technology Way, Norwood, MA 02062, USA. Subject to the terms and conditions of the Agreement, ADI hereby grants to Customer a free, limited, personal, temporary, non-exclusive, non-sublicensable, non-transferable license to use the Evaluation Board FOR EVALUATION PURPOSES ONLY. Customer understands and agrees that the Evaluation Board is provided for the sole and exclusive purpose referenced above, and agrees not to use the Evaluation Board for any other purpose. Furthermore, the license granted is expressly made subject to the following additional limitations: Customer shall not (i) rent, lease, display, sell, transfer, assign, sublicense, or distribute the Evaluation Board; and (ii) permit any Third Party to access the Evaluation Board. As used herein, the term "Third Party" includes any entity other than ADI, Customer, their employees, affiliates and in-house consultants. The Evaluation Board is NOT sold to Customer; all rights not expressly granted herein, including ownership of the Evaluation Board, are reserved by ADI. CONFIDENTIALITY. This Agreement and the Evaluation Board shall all be considered the confidential and proprietary information of ADI. Customer may not disclose or transfer any portion of the Evaluation Board to any other party for any reason. Upon discontinuation of use of the Evaluation Board or termination of this Agreement, Customer agrees to promptly return the Evaluation Board to ADI. ADDITIONAL RESTRICTIONS. Customer may not disassemble, decompile or reverse engineer chips on the Evaluation Board. Customer shall inform ADI of any occurred damages or any modifications or alterations it makes to the Evaluation Board, including but not limited to soldering or any other activity that affects the material content of the Evaluation Board. Modifications to the Evaluation Board must comply with applicable law, including but not limited to the RoHS Directive. TERMINATION. ADI may terminate this Agreement at any time upon giving written notice to Customer. Customer agrees to return to ADI the Evaluation Board at that time. LIMITATION OF LIABILITY. THE EVALUATION BOARD PROVIDED HEREUNDER IS PROVIDED "AS IS" AND ADI MAKES NO WARRANTIES OR REPRESENTATIONS OF ANY KIND WITH RESPECT TO IT. ADI SPECIFICALLY DISCLAIMS ANY REPRESENTATIONS, ENDORSEMENTS, GUARANTEES, OR WARRANTIES, EXPRESS OR IMPLIED, RELATED TO THE EVALUATION BOARD INCLUDING, BUT NOT LIMITED TO, THE IMPLIED WARRANTY OF MERCHANTABILITY, TITLE, FITNESS FOR A PARTICULAR PURPOSE OR NON-INFRINGEMENT OF INTELLECTUAL PROPERTY RIGHTS. IN NO EVENT WILL ADI AND ITS LICENSORS BE LIABLE FOR ANY INCIDENTAL, SPECIAL, INDIRECT, OR CONSEQUENTIAL DAMAGES RESULTING FROM CUSTOMER'S POSSESSION OR USE OF THE EVALUATION BOARD, INCLUDING BUT NOT LIMITED TO LOST PROFITS, DELAY COSTS, LABOR COSTS OR LOSS OF GOODWILL. ADI'S TOTAL LIABILITY FROM ANY AND ALL CAUSES SHALL BE LIMITED TO THE AMOUNT OF ONE HUNDRED US DOLLARS (\$100.00). EXPORT. Customer agrees that it will not directly or indirectly export the Evaluation Board to another country, and that it will comply with all applicable United States federal laws and regulations relating to exports. GOVERNING LAW. This Agreement shall be governed by and construed in accordance with the substantive laws of the Commonwealth of Massachusetts (excluding conflict of law rules). Any legal action regarding this Agreement will be heard in the state or federal courts having jurisdiction in Suffolk County, Massachusetts, and Customer hereby submits to the personal jurisdiction and venue of such courts. The United Nations Convention on Contracts for the International Sale of Goods shall not apply to this Agreement and is expressly disclaimed.

Rev. 0