

MATERIALS AND FINISHES

BODY REAR BRASS  
PLATED TIN

BODY FRONT BRASS  
PLATED NICKEL

CENTER CONTACT PHOSPHOR BRONZE/BRASS  
PLATED GOLD

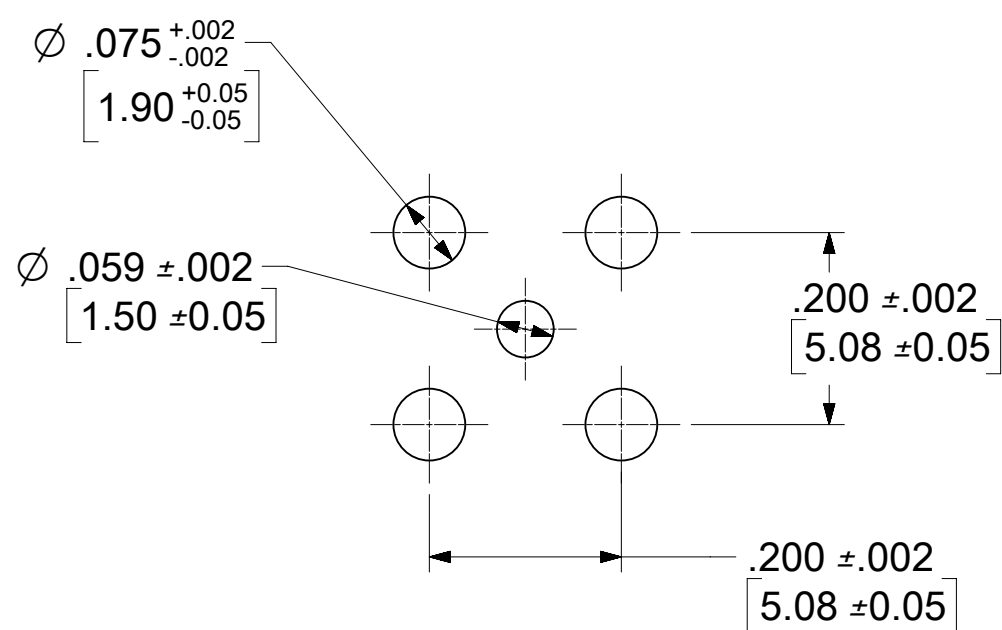
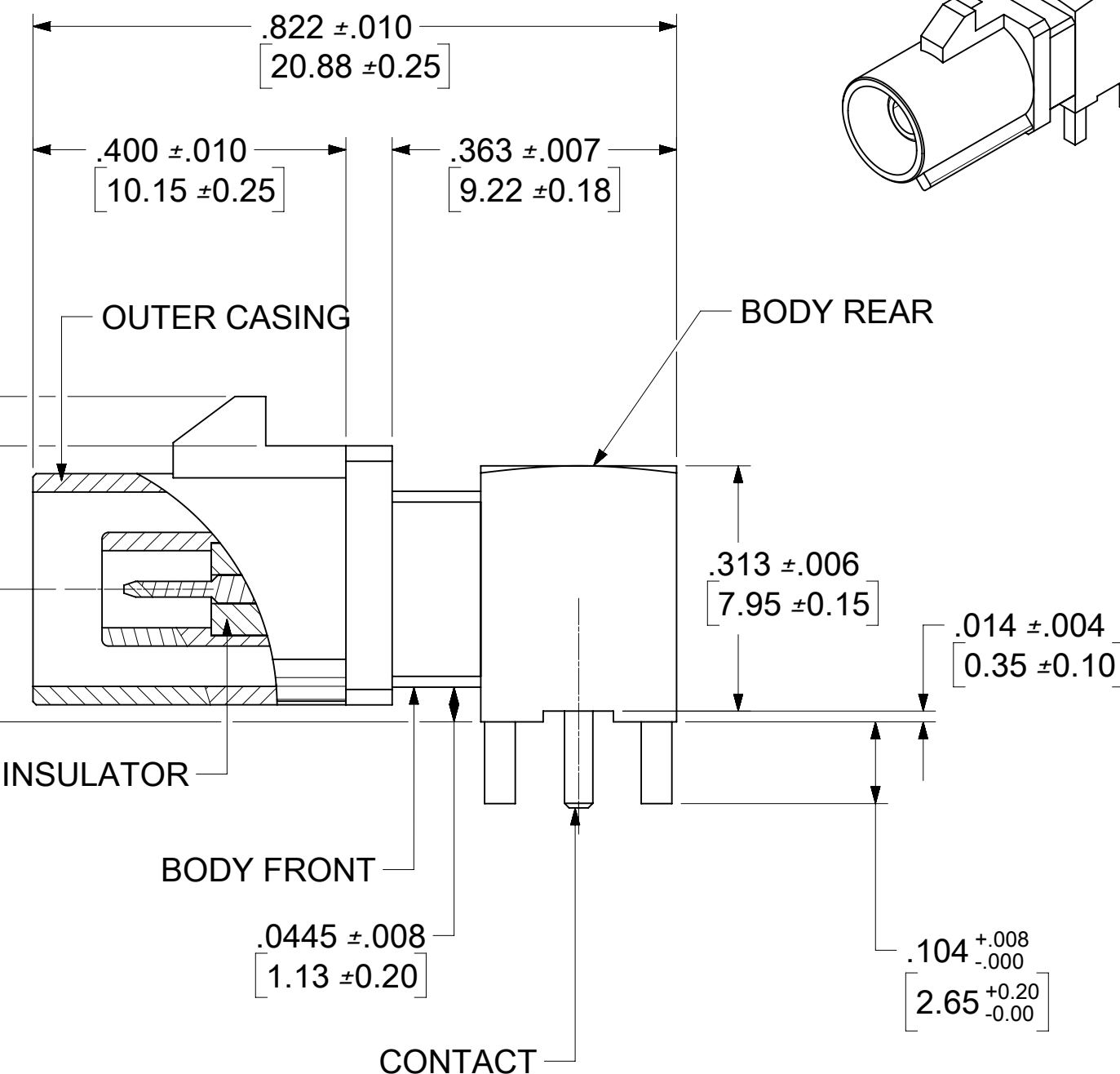
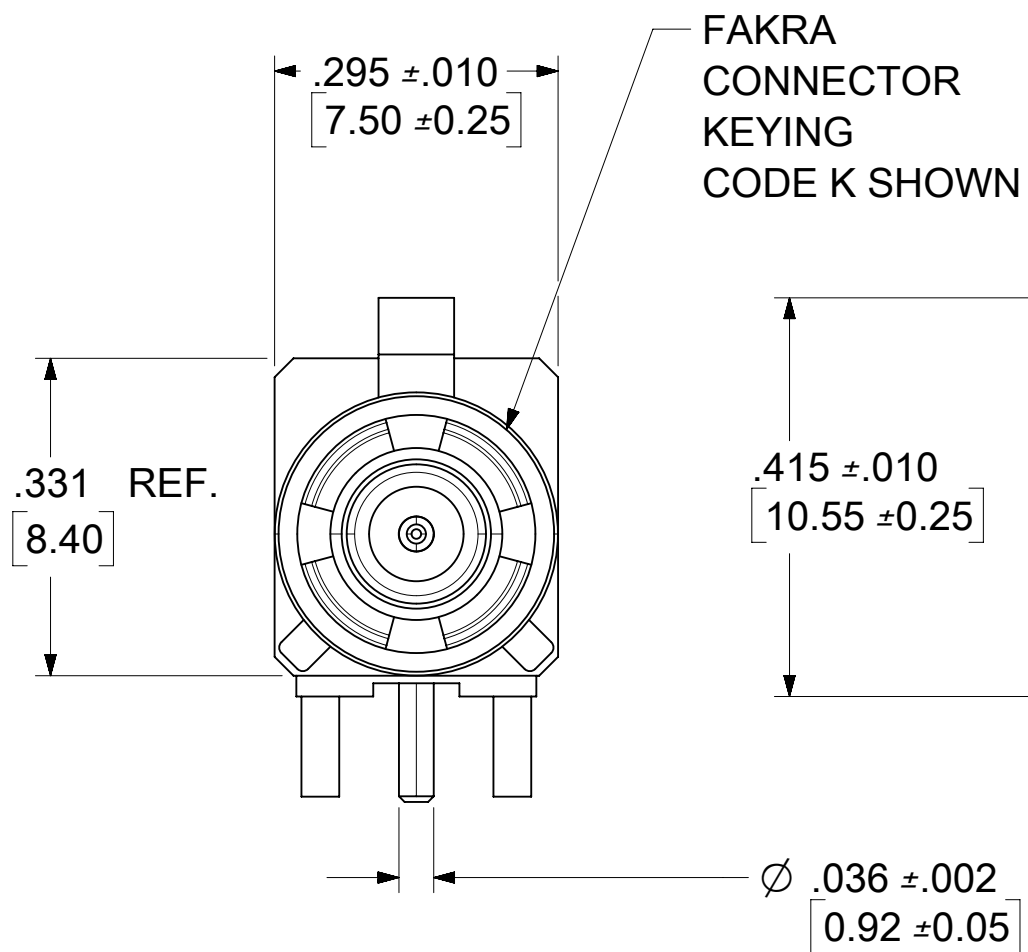
OUTER CASING HIGH TEMPERATURE PLASTIC  
KEYING SEE TABLE  
COLOR SEE TABLE

INSULATOR TEFLON

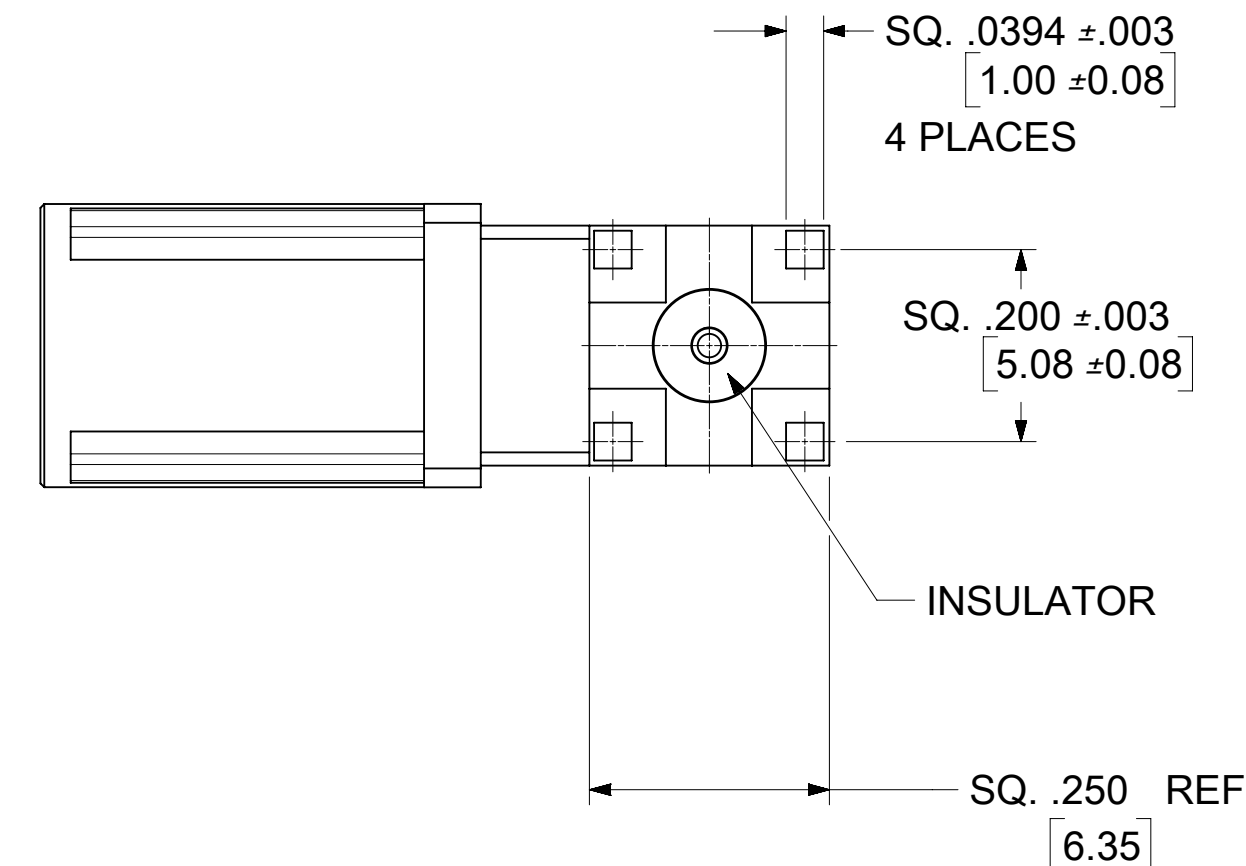
PACKAGING BY TRAY

RETENTION SPECIFICATION

THE FAKRA CONNECTOR SHROUD WILL WITHSTAND  
A LONGITUDINAL FORCE OF 110 N (24.75 LBS)



RECOMMENDED PCB LAYOUT

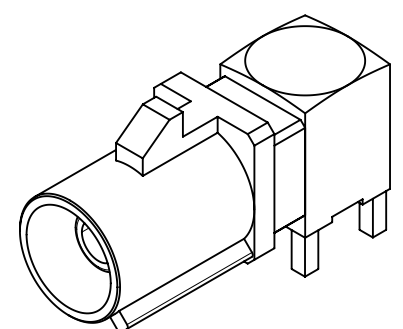


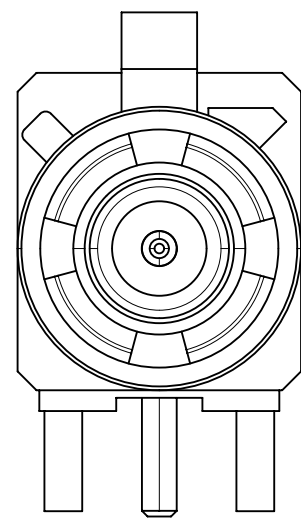
PS-89675-3310	PRODUCT SPECIFICATION
MIL-STD-348A, FIG. 311.1	INTERFACE SPECIFICATION
SPECIFICATION	DESCRIPTION

2018/03/19	A7	REDRAWN AND ADDED DIM. PER 11863
2017/01/05	A6	REDRAWN
DATE	REV.	DESCRIPTION

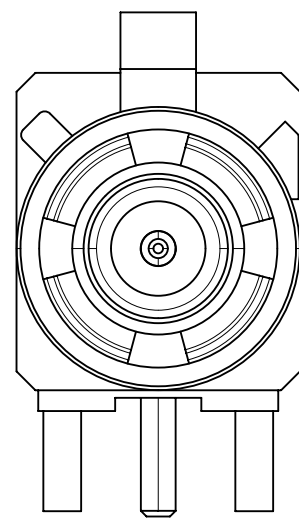
DOCUMENT STATUS	P1	RELEASE DATE	2018/03/23 02:05:33
-----------------	----	--------------	---------------------

SYMBOLS				THIS DRAWING CONTAINS INFORMATION THAT IS PROPRIETARY TO MOLEX ELECTRONIC TECHNOLOGIES, LLC AND SHOULD NOT BE USED WITHOUT WRITTEN PERMISSION			
▽ = 0	HYBRID	SCALE	5:1	CURRENT REV DESC:			
▽ = 0	GENERAL TOLERANCES (UNLESS SPECIFIED)			EC NO: 173804			
▽ = 0	ANGULAR TOL ± 2.0°			DRWN: ELIN 2018/03/19			
▽ = 0	4 PLACES	±		CHK'D: YCHENG 2018/03/23			
▽ = 0	3 PLACES	±		APPR: YCHENG 2018/03/23			
▽ = 0	2 PLACES	±		INITIAL REVISION:			
▽ = 0	1 PLACE	±		DRWN: SCHOU 2009/01/21			
▽ = 0	0 PLACES	±		APPR: MHUANG 2009/01/23			
▽ = 0	DRAFT WHERE APPLICABLE MUST REMAIN WITHIN DIMENSIONS			THIRD ANGLE PROJECTION	DRAWING	SERIES	
▽ = 0					C-SIZE	73403	
				<b>molex</b>			
				SMB JACK, FAKRA R/A PCB, 50 OHMS 11863 SMB-J/PCB/RA			
				PRODUCT CUSTOMER DRAWING			
				DOCUMENT NUMBER	DOC TYPE	DOC PART	REVISION
				SD-73403-511	PSD	001	A7
				MATERIAL NUMBER	CUSTOMER	SHEET NUMBER	
				GENERAL MARKET		1 OF 2	

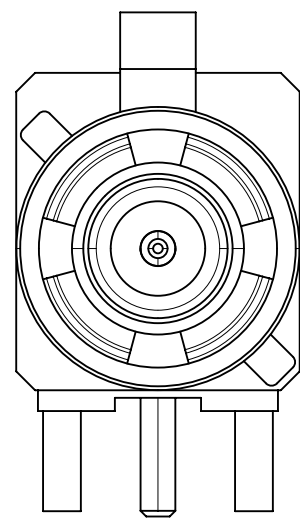




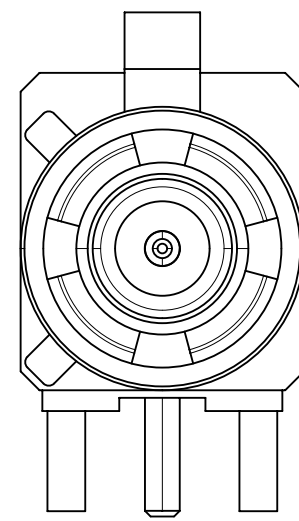
CODE A



CODE B

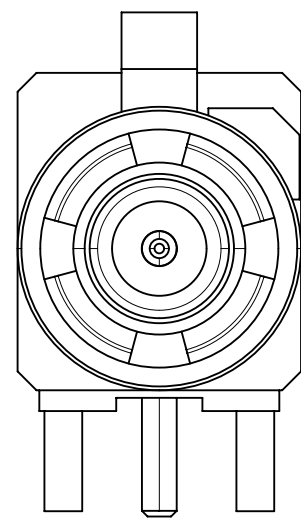


CODE C

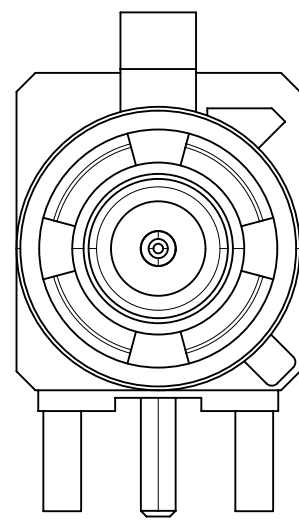


CODE D

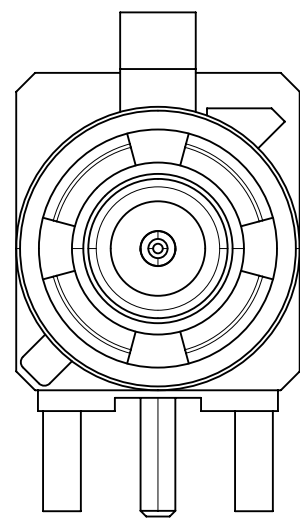
N	PASTEL GREEN	73403-5123
M	PASTEL ORANGE	73403-5122
L	CARMINE RED	73403-5121
Z	WATER BLUE	73403-5120
K	CURRY YELLOW	73403-5119
I	BEIGN	73403-5118
H	VIOLET	73403-5117
G	GRAY	73403-5116
F	BROWN	73403-5115
E	GREEN	73403-5114
D	BORDEAUXVIOLET	73403-5113
C	BLUE	73403-5112
B	SINGLE WHITE	73403-5111
A	BLACK	73403-5110
KEYING CODE	COLOR	PART NO.



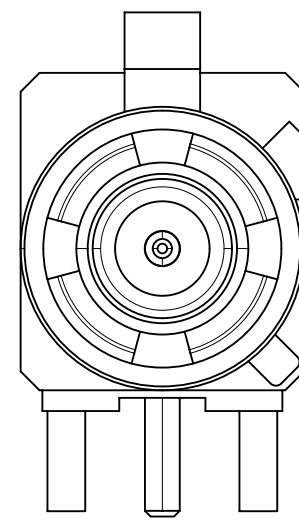
CODE E



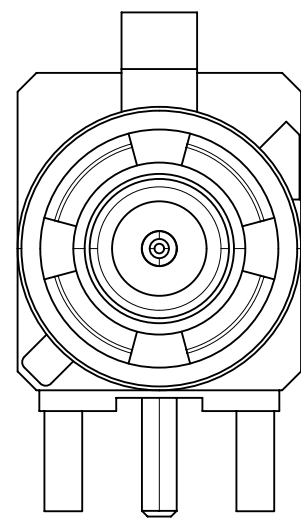
CODE F



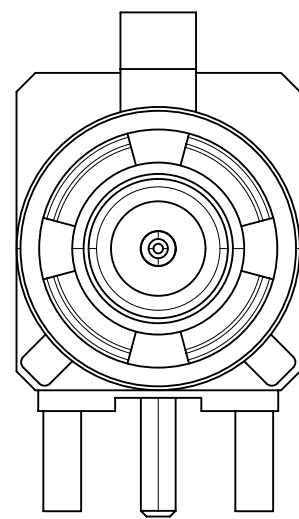
CODE G



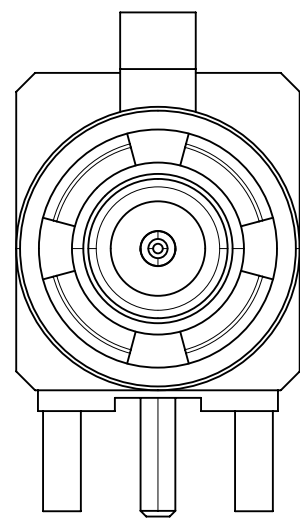
CODE H



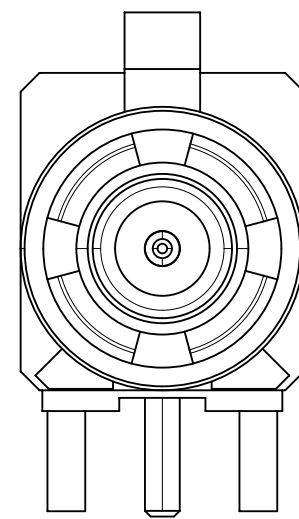
CODE I



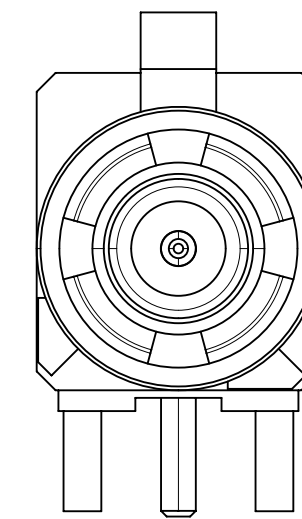
CODE K



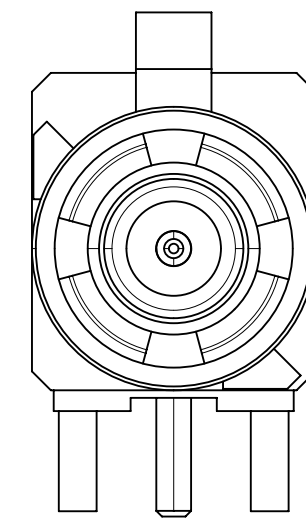
CODE Z



CODE L



CODE M



CODE N

<b>SYMBOLS</b> ▽ = 0 ▽ = 0 ▽ = 0 ▽ = 0 ▽ = 0 ▽ = 0 ▽ = 0 ▽ = 0 ▽ = 0 ▽ = 0	THIS DRAWING CONTAINS INFORMATION THAT IS PROPRIETARY TO MOLEX ELECTRONIC TECHNOLOGIES, LLC AND SHOULD NOT BE USED WITHOUT WRITTEN PERMISSION		DIMENSION UNITS: <b>HYBRID</b> SCALE: <b>5:1</b>		CURRENT REV DESC:						
	GENERAL TOLERANCES (UNLESS SPECIFIED)		EC NO: 173804		DRWN: ELIN 2018/03/19					SMB JACK, FAKRA R/A PCB, 50 OHMS 11863 SMB-J/PCB/RA	
	ANGULAR TOL ± 2.0°		DRWN: YCHENG 2018/03/23		APPR: YCHENG 2018/03/23		PRODUCT CUSTOMER DRAWING				
	4 PLACES ±		INITIAL REVISION:		DRWN: SCHOU 2009/01/21					DOCUMENT NUMBER: <b>SD-73403-511</b>	
	3 PLACES ±		APPR: MHUANG 2009/01/23		DRWN: SCHOU 2009/01/21		MATERIAL NUMBER:		CUSTOMER:		SHEET NUMBER:
	2 PLACES ±		THIRD ANGLE PROJECTION		DRAWING: C-SIZE		SERIES: 73403		GENERAL MARKET		2 OF 2
	1 PLACE ±		DRAFT WHERE APPLICABLE		MUST REMAIN WITHIN DIMENSIONS		THIRD ANGLE PROJECTION		DRAWING: C-SIZE		SERIES: 73403
	0 PLACES ±		DRAFT WHERE APPLICABLE		MUST REMAIN WITHIN DIMENSIONS		THIRD ANGLE PROJECTION		DRAWING: C-SIZE		SERIES: 73403
	0 PLACES ±		DRAFT WHERE APPLICABLE		MUST REMAIN WITHIN DIMENSIONS		THIRD ANGLE PROJECTION		DRAWING: C-SIZE		SERIES: 73403

MATERIALS AND FINISHES

BODY BRASS  
PLATED NICKEL

HOUSING BRASS  
PLATED TIN

CENTER CONTACT PHOSPHOR BRONZE/BRASS  
PLATED GOLD

OUTER CASING HIGH TEMPERATURE PLASTIC  
KEYING SEE TABLE  
COLOR SEE TABLE

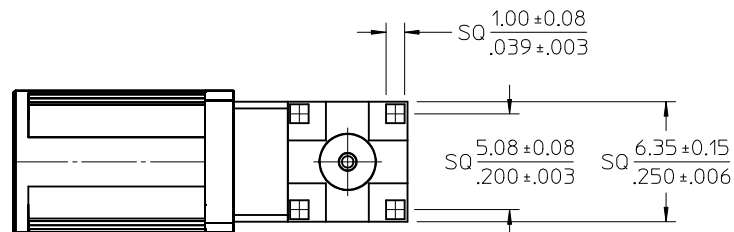
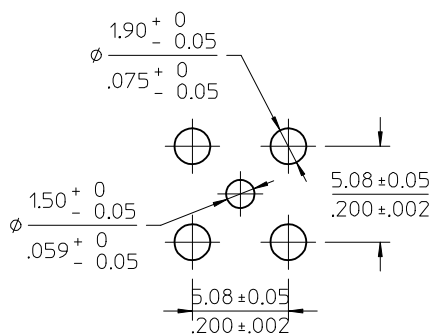
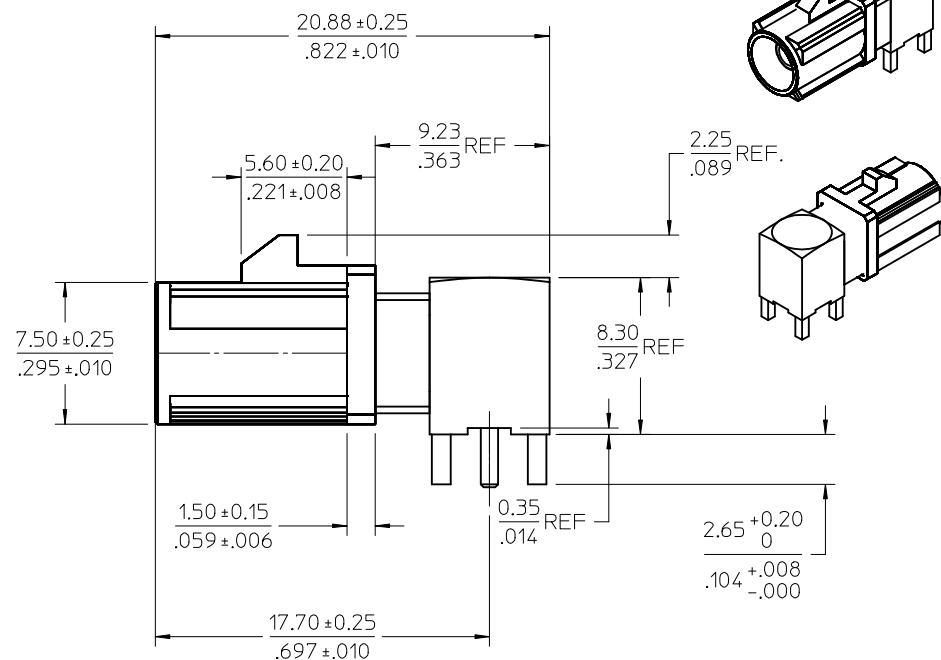
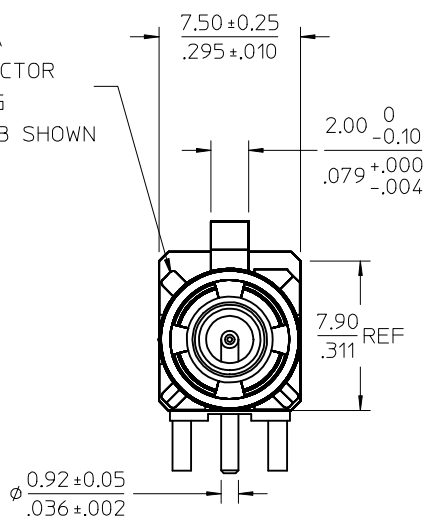
INSULATOR TEFLON

PACKAGING BY TAPE AND REEL

RETENTION SPECIFICATION

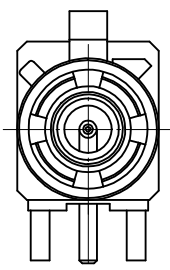
THE FAKRA CONNECTOR SHROUD WILL WITHSTAND  
A LONGITUDINAL FORCE OF 110 N (24.75 LBS)

FAKRA  
CONNECTOR  
KEYING  
CODE B SHOWN

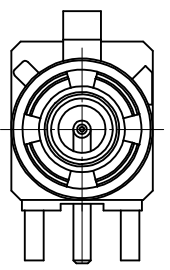


PS-89675-3310	PRODUCT SPECIFICATION
MIL-STD-348A, FIG. 311.1	INTERFACE SPECIFICATION
SPECIFICATION	DESCRIPTION

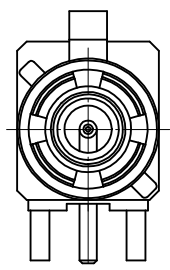
RTM PDR15092069 PDR13091433 EC NO: URF2016-0255 DRW:LIN 2013/09/24 CHKD: APPR:YCHENG 2015/10/13	QUALITY SYMBOLS ▽=0 ▽=0 ▽=0	GENERAL TOLERANCES (UNLESS SPECIFIED)	DIMENSION STYLE MM/IN	SCALE 1:1	DESIGN UNITS METRIC	THIRD ANGLE PROJECTION
		4 PLACES ± --- ± ---	DRAWN BY EL IN	DATE 2013/09/24	SMB JACK, FAKRA,R/A PCB 50 OHMS T&R SMB-J/PCB/RA <b>molex</b>	
		3 PLACES ± --- ± ---	CHECKED BY JOANNE	DATE 2013/09/24		
		2 PLACES ± --- ± ---	APPROVED BY YCHENG	DATE 2015/10/13		
1 PLACE ± --- ± ---	MATERIAL NO.		DOCUMENT NO.	SHEET NO.		
0 PLACE ± --- ± ---	ANGULAR ± 2 °		SEE SHEET 2		SD-73403-650	1 OF 5
DRAFT WHERE APPLICABLE MUST REMAIN WITHIN DIMENSIONS		THIS DRAWING CONTAINS INFORMATION THAT IS PROPRIETARY TO MOLEX INCORPORATED AND SHOULD NOT BE USED WITHOUT WRITTEN PERMISSION				



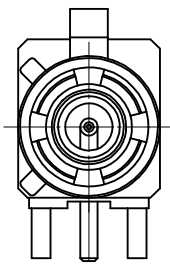
CODE-A



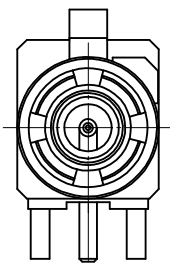
CODE-B



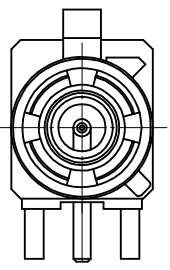
CODE-C



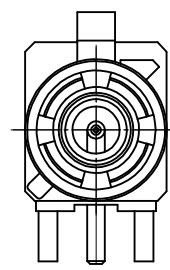
CODE-D



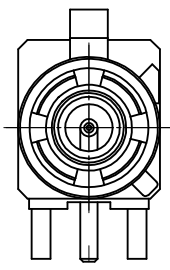
CODE-E



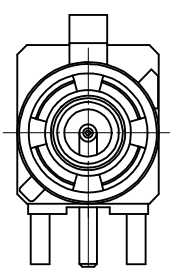
CODE-F



CODE-G



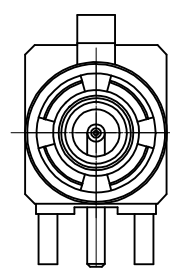
CODE-H



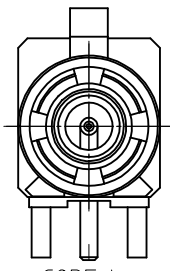
CODE-I



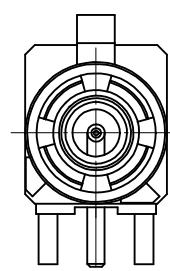
CODE-K



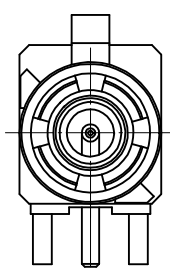
CODE-Z



CODE-L



CODE-M



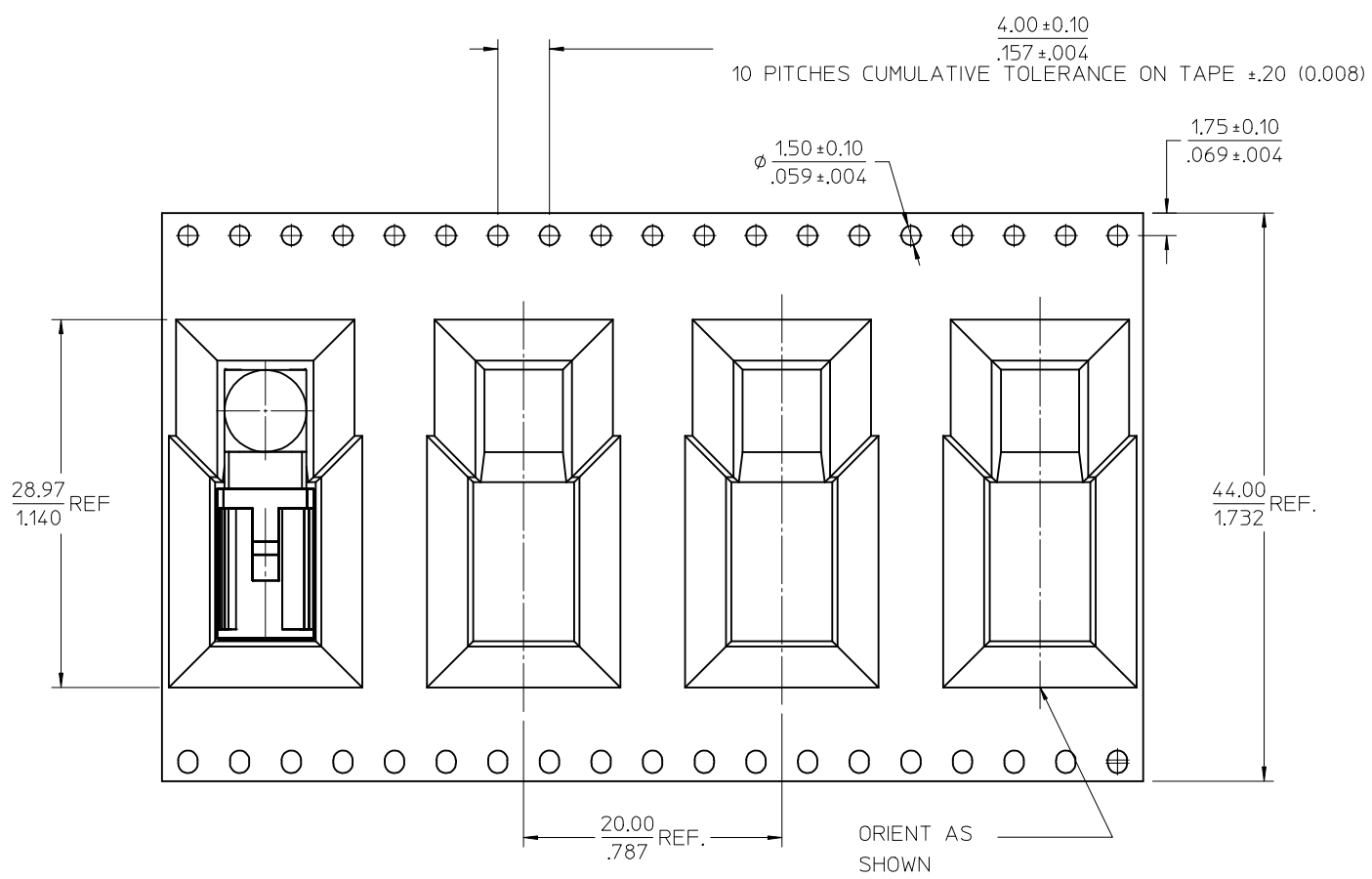
CODE-N

N	PASTEL GREEN	73403-6513
M	PASTEL ORANGE	73403-6512
L	CARMINE RED	73403-6511
Z	WATER BLUE	73403-6510
K	CURRY YELLOW	73403-6509
I	BEIGE	73403-6508
H	VIOLET	73403-6507
G	GRAY	73403-6506
F	BROWN	73403-6505
E	GREEN	73403-6504
D	BORDEAUXVIOLET	73403-6503
C	BLUE	73403-6502
B	NATURAL	73403-6501
A	BLACK	73403-6500
KEYING CODE	COLOR	PART NO.

<b>SEE SHEET 1</b> EC NO: URF2016-0255 DRWNLIN 2013/09/24 CHKD: APPR: YCHENG 2015/10/13	QUALITY SYMBOLS = 0 = 0 = 0	GENERAL TOLERANCES (UNLESS SPECIFIED) <table border="1"> <tr><th></th><th>mm</th><th>INCH</th></tr> <tr><td>4 PLACES</td><td>± .005</td><td>± .0004</td></tr> <tr><td>3 PLACES</td><td>± .005</td><td>± .0004</td></tr> <tr><td>2 PLACES</td><td>± .005</td><td>± .0004</td></tr> <tr><td>1 PLACE</td><td>± .005</td><td>± .0004</td></tr> <tr><td>0 PLACE</td><td>± .005</td><td>± .0004</td></tr> </table>		mm	INCH	4 PLACES	± .005	± .0004	3 PLACES	± .005	± .0004	2 PLACES	± .005	± .0004	1 PLACE	± .005	± .0004	0 PLACE	± .005	± .0004	DIMENSION STYLE <b>MM/IN</b> DRAWN BY DATE EL IN 2013/09/24 CHECKED BY DATE JOANNE 2013/09/24 APPROVED BY DATE YCHENG 2015/10/13	SCALE <b>1:1</b> DESIGN UNITS <b>METRIC</b> THIRD ANGLE PROJECTION	TITLE <b>SMB JACK, FAKRA,R/A          PCB 50 OHMS T&amp;R          SMB-J/PCB/RA</b> <b>molex</b>	MATERIAL NO. <b>SEE TABLE</b> DOCUMENT NO. <b>SD-73403-650</b>	SHEET NO. <b>2 OF 5</b>
		mm	INCH																						
	4 PLACES	± .005	± .0004																						
	3 PLACES	± .005	± .0004																						
2 PLACES	± .005	± .0004																							
1 PLACE	± .005	± .0004																							
0 PLACE	± .005	± .0004																							
ANGULAR ± 2° DRAFT WHERE APPLICABLE MUST REMAIN WITHIN DIMENSIONS		SIZE <b>C</b>		THIS DRAWING CONTAINS INFORMATION THAT IS PROPRIETARY TO MOLEX INCORPORATED AND SHOULD NOT BE USED WITHOUT WRITTEN PERMISSION																					

13 12 11 10 9 8 7 6 5 4 3 2 1

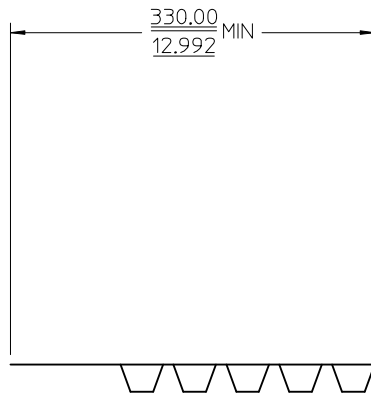
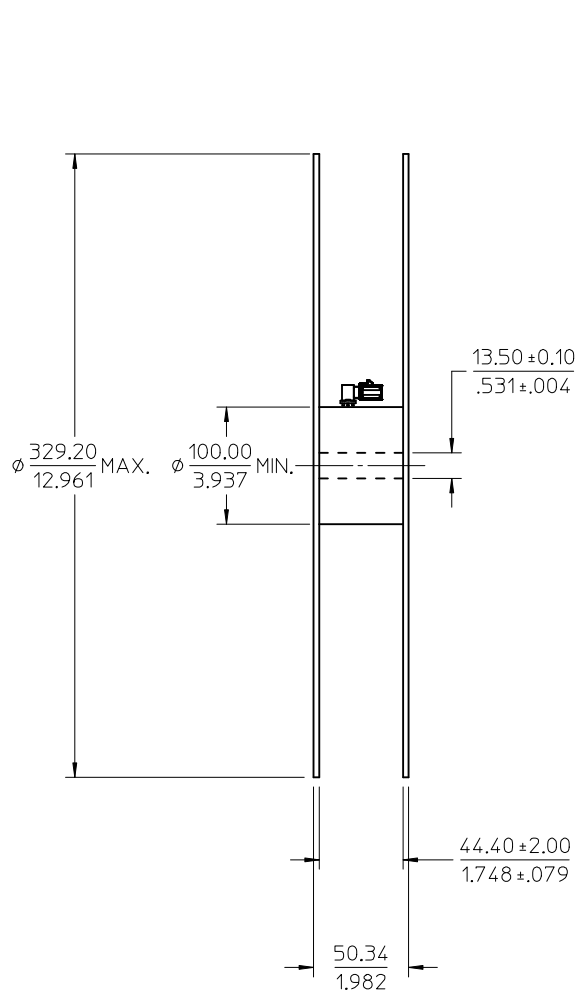
J  
I  
H  
G  
F  
E  
D  
C  
B  
A



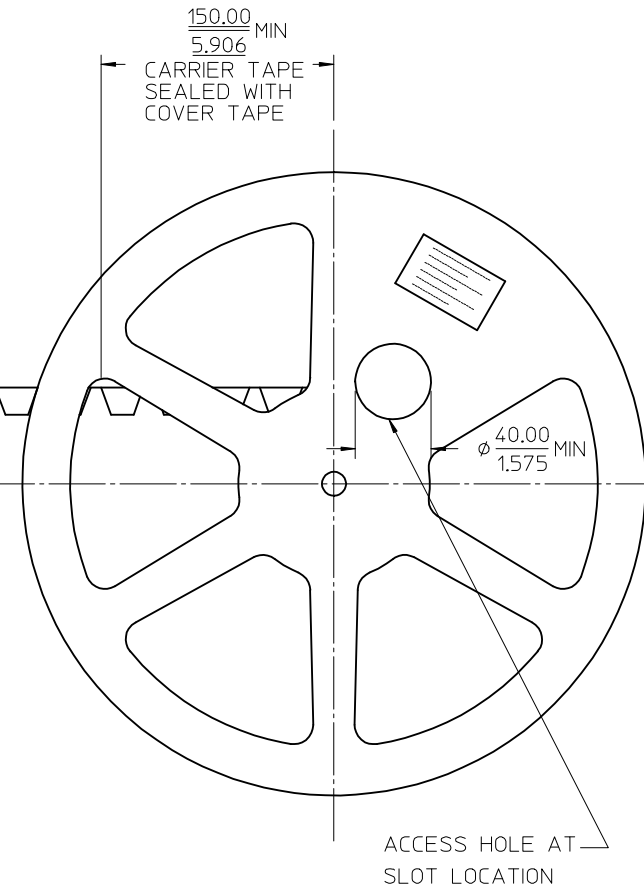
NOTES:  
1. 250 CONNECTORS PER REEL ON 330.2 mm (13.0 IN) REEL

SEE SHEET 1 EC NO: URF2016-0255 DRAWN IN 2013/09/24 CHKD: APPR: YCHENG 2015/10/13	QUALITY SYMBOLS	GENERAL TOLERANCES (UNLESS SPECIFIED)	DIMENSION STYLE	SCALE	DESIGN UNITS	THIRD ANGLE PROJECTION
	▽=0 ▽=0 ▽=0	mm INCH	MM/IN	1:1	METRIC	
A	DESCRIPTION	4 PLACES ± --- ± ---	DRAWN BY DATE	TITLE	SMB JACK, FAKRA,R/A PCB 50 OHMS T&R SMB-J/PCB/RA	MATERIAL NO.
	REV	3 PLACES ± --- ± ---	EL IN 2013/09/24			
		2 PLACES ± --- ± ---	CHECKED BY DATE	DOCUMENT NO.	SD-73403-650	SHEET NO. 3 OF 5
		1 PLACE ± --- ± ---	JOANNE 2013/09/24			
		0 PLACE ± --- ± ---	APPROVED BY DATE	THIS DRAWING CONTAINS INFORMATION THAT IS PROPRIETARY TO MOLEX INCORPORATED AND SHOULD NOT BE USED WITHOUT WRITTEN PERMISSION		
		ANGULAR ± 2 °	YCHENG 2015/10/13			
DRAFT WHERE APPLICABLE MUST REMAIN WITHIN DIMENSIONS		SEE SHEET 2				

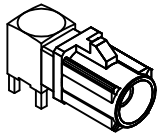
1b\_frame\_C\_P\_AM\_T Rev. G 2012/01/11 12 11 10 9 8 7 6 5 4 3 2 1



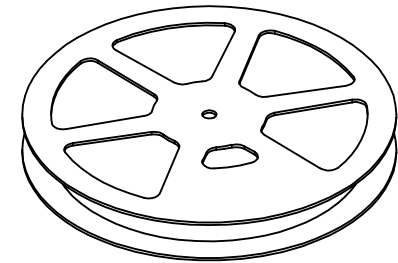
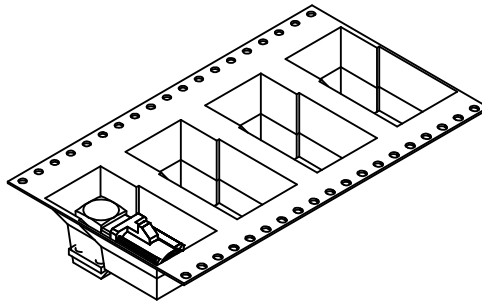
250mm MIN OF CARRIER AND /OR COVER TAPE.  
PLUS 80mm MINIMUM OF CARRIER TAPE SEALED WITH COVER TAPE



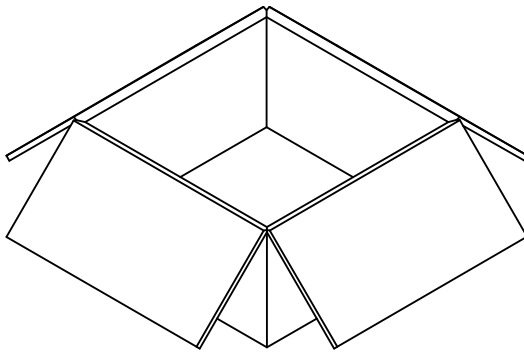
SEE SHEET 1 EC NO: URF2016-0255 DRW:ELIN 2013/09/24 CHKD: APPR:YCHENG 2015/10/13	QUALITY SYMBOLS	GENERAL TOLERANCES (UNLESS SPECIFIED)		DIMENSION STYLE		SCALE	DESIGN UNITS	THIRD ANGLE PROJECTION	
	$\nabla = 0$	mm	INCH	MM/IN		1:2	METRIC		
	$\nabla = 0$	4 PLACES $\pm$ --- $\pm$ ---	3 PLACES $\pm$ --- $\pm$ ---	DRAWN BY	DATE	TITLE			
	$\nabla = 0$	2 PLACES $\pm$ --- $\pm$ ---	1 PLACE $\pm$ --- $\pm$ ---	EL IN	2013/09/24	SMB JACK, FAKRA,R/A PCB 50 OHMS T&R SMB-J/PCB/RA			
REV	DESCRIPTION	ANGULAR $\pm 2^\circ$		APPROVED BY	DATE	DOCUMENT NO.		SHEET NO.	
A		DRAFT WHERE APPLICABLE MUST REMAIN WITHIN DIMENSIONS		YCHENG	2015/10/13	SD-73403-650		4 OF 5	
		SEE SHEET 2		THIS DRAWING CONTAINS INFORMATION THAT IS PROPRIETARY TO MOLEX INCORPORATED AND SHOULD NOT BE USED WITHOUT WRITTEN PERMISSION					



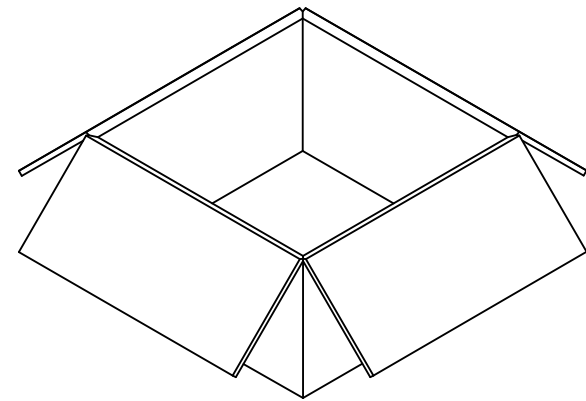
73403-650\*



250 SET PER 13" REEL



1000 SET PER INNER  
CARTON BOX  
343 X 343 X 188 REF.



1000 SET PER OUTER  
CARTON BOX  
394 X 391 X 212 REF.

SEE SHEET 1 EC NO: URF-2016-0255 DRW: ELIN 2013/09/24 CHKD: DRW: ELIN APPR: YCHENG 2015/10/13	DESCRIPTION REV: A	QUALITY SYMBOLS	GENERAL TOLERANCES (UNLESS SPECIFIED)		DIMENSION STYLE	SCALE	DESIGN UNITS	THIRD ANGLE PROJECTION	
		▽=0	mm	INCH	MM/IN	1:1	METRIC		
		▽=0	4 PLACES ± --- ± ---	3 PLACES ± --- ± ---	2 PLACES ± --- ± ---	1 PLACE ± --- ± ---	0 PLACE ± --- ± ---	TITLE	
		▽=0	ANGULAR ± 2 °		DRAWN BY DATE		DATE		SMB JACK, FAKRA,R/A PCB 50 OHMS T&R SMB-J/PCB/RA
DRAFT WHERE APPLICABLE MUST REMAIN WITHIN DIMENSIONS		MATERIAL NO.		APPROVED BY DATE		DOCUMENT NO.		SHEET NO.	
		SEE SHEET 2		YCHENG 2015/10/13		SD-73403-650		5 OF 5	
		THIS DRAWING CONTAINS INFORMATION THAT IS PROPRIETARY TO MOLEX INCORPORATED AND SHOULD NOT BE USED WITHOUT WRITTEN PERMISSION							