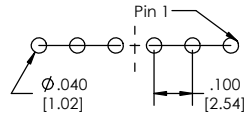
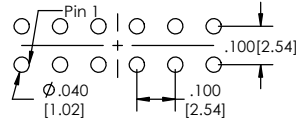


Recommend P.C. Board Layout
SCALE 4:1

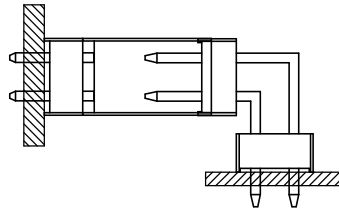


SINGLE ROW

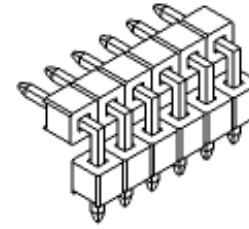


DOUBLE ROW

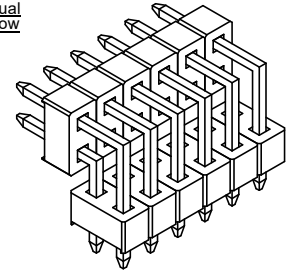
APPLICATION



Single Row



Dual Row



BSTCR-1 XX - X - XXX - XX - XXX - XX - XXX - XX - XXX - XX - XXX - LF
(A) (B) (C) (D) (E) (F) (G) (H) (I) (J)

- A. Pins Per Row - 1 through 40
- B. Row Specification - S= Single Row, D= Double Row
- C. Desired Tail Length - Please specify tail length - e.g. .137[3.50]= 137
- D. Pin Options - See Pin Options below
- E. Desired Post Height - Please Specify - If Post is not specified the Post(P) = Overall Length(L) - Board Space(B) - Tail(T) - .140[3.56]
- F. Plating Options - See Plating Options below
- G. Desired Board Space - Please Specify required space - e.g. .100[2.54]= 100 - 200[5.33] Min.
- H. Lock Tight "LT" (Optional) - Leave blank if not needed - LT= With
- I. Polarized Position - Leave blank if not needed - If required, specify empty pin position, e.g. 012 for Pin 12
- J. Lead Free

Mates with:
BCSS,
BSSH,
BSSH.C,
BSSQ,
BSSQ.C,
BSSQ.M,
LBSS,
LSMBC,
LSWSS,
SMBC,
SSHQ,
SSHQ.R,
SSHR,
SSHS,
SSHS.M.

Plating options	
G	-10µ Gold on Contact Area/ Flash on Tail
T	-Matte Tin all Over
GT	-10µ Gold on Contact Area/ Matte Tin on Tail
H	-30µ Gold on Contact Area/ Matte Tin on Tail
F	-Gold Flash over Entire Pin
FT	- Gold Flash on Contact Area/ Matte Tin on Tail

Pin Options	
Overall Length	
.630	16.00mm 16
.730	18.54mm 20
.830	21.08mm 22
.930	23.62mm 24
1.030	26.16mm 26
1.130	28.70mm 28
1.230	31.24mm 30
1.330	33.78mm 32
1.430	36.32mm 34
1.530	38.86mm 36
Board Space + Tail +	
Post + .140[3.55]	
must not exceed	
Overall Length	

Specifications:
Current Rating: 3.0 Ampere
Insulation Resistance: 1000M Ohms Min.
Dielectric Withstanding: 600V AC
Contact Resistance: 20M Ohms Max.
Operation Temperature: -40°C to +105°C
Max. Process Temperature
Peak: 260°C up to 20 secs.
Process: 230°C up to 60 secs.
Wave: 260°C up to 6 secs.
Manual Solder: 350°C up to 5 secs.

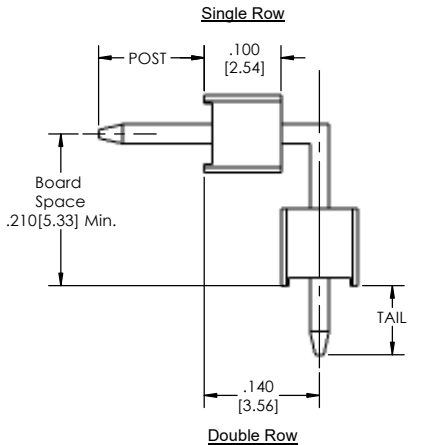
Materials:
Contact Material: Phosphor Bronze
Insulator Material: Nylon 6T
Plating: Au or Sn over 50µ" (1.27) Ni

Tails may be clipped to achieve specific dimensions.
Products cut to specific sizes are uncancelable/ nonreturnable.
Parts are subject to change without notice.

UNLESS OTHERWISE SPECIFIED:		NAME	DATE		
DIMENSIONS ARE IN INCHES		DRAWN	EW		09/15/15
TOLERANCES ARE:		CHECKED	GWE		09/15/15
ONE DECIMALS ±.100		ENG APPR.			
TWO DECIMAL ±.010		MFG APPR.			
THREE DECIMAL ±.005		ADDRESS:		2533 Centennial Blvd.	
FOUR DECIMAL ±.002		MATERIAL:		Jeffersonville, IN 47130	
NEXT ASSY USED ON		FINISH:		Phone: 812-670-4174	
APPLICATION		DO NOT SCALE DRAWING		Fax: 812-670-4175	
		E-Mail: mle@mlelectronics.com		TITLE: BSTCR-1 SERIES	
				SIZE DWG. NO. C	
				REV E	
				SCALE 8:1 SHEET 1 OF 1	



PROPRIETARY AND CONFIDENTIAL
THE INFORMATION CONTAINED IN THIS DRAWING IS THE SOLE PROPERTY OF Major League Electronics. ANY REPRODUCTION IN PART OR AS A WHOLE WITHOUT THE WRITTEN PERMISSION OF Major League Electronics IS PROHIBITED.



Double Row

