



ABSTRACT

This user's guide provides detailed testing instructions for the BQ25620 and BQ25622 evaluation modules (EVM). Also included are descriptions of the necessary equipment, equipment setup, and procedures. The reference documentation contains the printed-circuit board layouts, schematics, and the bill of materials (BOM).

Throughout this user's guide, the abbreviations *EVM*, *BQ25620EVM*, *BQ25622EVM*, *BMS050*, and the term *evaluation module* are synonymous with the BMS050 evaluation module, unless otherwise noted.

Table of Contents

1 Introduction	2
1.1 EVM Features.....	2
1.2 General Descriptions.....	2
2 Testing Procedures	4
2.1 Equipment.....	4
2.2 Hardware Setup.....	4
2.3 Software Setup.....	5
2.4 Test Procedure.....	7
3 PCB Layout Guideline	10
4 Board Layout, Schematic, and Bill of Materials	11
4.1 Board Layout.....	11
4.2 Schematic.....	13
4.3 Bill of Materials.....	15
5 Revision History	17

List of Figures

Figure 2-1. Test Setup for BQ25620EVM and BQ25622EVM.....	4
Figure 2-2. BQStudio Device Type Selection Window.....	5
Figure 2-3. BQStudio Charger Selection Window.....	5
Figure 2-4. Main Window of BQ25620/2 EVM Software.....	6
Figure 4-1. BMS050 Top Layer.....	11
Figure 4-2. BMS050 Internal Layer 1.....	11
Figure 4-3. BMS050 Internal Layer 2.....	12
Figure 4-4. BMS050 Bottom Layer.....	12
Figure 4-5. BQ25620EVM Schematic.....	13
Figure 4-6. BQ25622EVM Schematic.....	14

List of Tables

Table 1-1. Device Data Sheets.....	2
Table 1-2. EVM I/O Connections.....	2
Table 1-3. EVM Jumper Shunt and Switch Installation.....	3
Table 1-4. Recommended Operating Conditions.....	3
Table 4-1. BMS050 Bill of Materials.....	15

Trademarks

All trademarks are the property of their respective owners.

1 Introduction

The BMS050 evaluation module (EVM) is a complete charger module for evaluating the BQ25620 and BQ25622 devices. The BQ25620 and BQ25622 are I²C-controlled single-cell chargers with NVDC Power Path Management, Integrated ADC, and OTG Output.

For detailed features and operation, see [Table 1-1](#) table for a list of devices and their data sheets.

Table 1-1. Device Data Sheets

Device	Data Sheet	EVM Label
BQ25620	SLUSEG2	BQ25620EVM
BQ25622	SLUSEG2	BQ25622EVM

1.1 EVM Features

This EVM supports the following features:

- Evaluation module for the BQ25620 or BQ25622 devices.
- Narrow VDC (NVDC) power path management for powering the systems and charging the battery.
- Supports I²C communication for systems configuration and status reporting.
- Test points for key signals available for testing purposes.
- Jumpers for easy configuration.
- One push-button for wake-up and reset input with adjustable timers.
- Charge status (STAT) and Power Good (PG) LEDs for charging monitoring.
- Connections for EV2400 or USB2ANY interface board controllers.

This EVM does not include the EV2400 or USB2ANY interface boards. To evaluate the EVM, an EV2400 or USB2ANY must be ordered separately.

1.2 General Descriptions

[Table 1-2](#) lists the input and output connections available on this EVM and their respective descriptions.

Table 1-2. EVM I/O Connections

Terminal	Description
J1(2) - VIN	Positive rail of the charger input voltage
J1(1) - GND	Ground
J2(1) - SYSTEM	Positive rail of the charger system output voltage, typically connected to the system load
J2(2) - GND	Ground
J3(1) - VPB	Positive rail of the charger output voltage for power bank applications in reverse boost mode (OTG). This output also shares the rail with the VIN input rail in forward buck mode
J3(2)-GND	Ground
J4(3) - BATTERY	Positive rail of the charger battery input, connected to the positive terminal of the external battery
J4(2) - ext_ts	Connection available for external thermistor if required
J4(1) - GND	Ground
J5	Input source Micro B USB port
J6	I ² C connector for the USB2ANY interface board
J7	I ² C connector for the EV2400 interface board

Table 1-3 lists the jumper and shunt installations available on this EVM and their respective descriptions.

Table 1-3. EVM Jumper Shunt and Switch Installation

Header	Description	BQ25620 Setting	BQ25622 Setting
JP1	Not applicable	Not Installed	Not Installed
JP2	SCL pull-up rail. Not required if using EV2400 or USB2ANY	Not Installed	Not Installed
JP3	SDA pull-up rail. Not required if using EV2400 or USB2ANY	Not Installed	Not Installed
JP4	Not applicable	Not Installed	Not Installed
JP5	BQ25620EVM: Not applicable. BQ25622EVM: Connects ILIM pin resistor to ILIM pin.	Not Installed	Not Installed
JP6	BQ25620EVM: Micro B USB input D- connection to charger D- pin BQ25622EVM: Not applicable.	Installed	Installed
JP7	\overline{PG} pin LED indicator connection. On \overline{PG} enabled chargers, this indicates the Power Good status	Installed	Installed
JP8	STAT pin LED indicator connection. This indicates the current charger status	Installed	Installed
JP9	BQ25620EVM: Micro B USB input D- connection to charger D- pin BQ25622EVM: Not applicable.	Installed	Installed
JP10	Used to connect USB2ANY SDA and SCL lines to a power rail on the PCB.	Not Installed	Not Installed
JP11	BQ25620EVM: TS resistor divider pull-up rail to REGN. BQ25622EVM: TS resistor divider pull-up rail to TS_BIAS.	Short pins 1-2	Short pins 2-3
JP12	BQ25620EVM: Charger D+ pin and charger D- pin short connection. Connect this on D+/D- detection enabled chargers to simulate the connection of a DCP-type USB port as defined by USB BC1.2 and set IINDPM register to highest setting. BQ25622EVM: Not applicable.	Installed	Not Installed
JP13	Connect 10 kohm in parallel with TS resistor network to simulate a battery at 25 C. Disconnect if using external thermistor.	Installed	Installed
JP14	\overline{CE} pin connection to ground to enable charging. When removed, \overline{CE} pin pulls up to SYS through 10 kohm to disable charge	Installed	Installed
JP15	Not applicable	Not Installed	Not Installed
S1	\overline{QON} control switch. Press either for exiting Shipping Mode or System Reset.	Default Off	Default Off

Table 1-4 lists the recommended operating conditions for this EVM.

Table 1-4. Recommended Operating Conditions

Symbol	Description	Min	Typ	Max	Unit
V_{VBUS}, V_{VAC}	Input voltage applied to VBUS pin	3.9		18.0	V
V_{BAT}	Battery voltage applied to BAT pin	0	4.208	4.8	V
I_{VBUS}	Input current into VBUS	0		3.2	A
I_{SW}	Output current from SW flowing to SYS pin load and battery at BAT pin			3.5	A
I_{BAT}	Fast charging current into battery at BAT pin	0		3.5	A
	Continuous RMS discharge current through internal BATFET			6	A

2 Testing Procedures

2.1 Equipment

This section includes a list of supplies required to perform tests on this EVM.

1. **Power Supplies:** Power Supply #1 (PS #1): A power supply capable of supplying 5 V at 3 A is required. While this part can handle larger voltage and current, it is not necessary for this procedure.
2. **Load #1 for simulating a battery:** 4-Quadrant Supply, Constant Voltage < 4.5 V "Kepco" Load, BOP, 20-5M, DC 0 to ± 20 V, 0 to ± 3.5 A (or higher)
Alternative Option: A 0–20V/0–3.5 A, > 30-W DC electronic load set in a constant voltage loading mode
3. **Load #2 for simulating a load at SYS or load at VBUS in reverse/OTG mode:** Electronic or Resistive Load capable sinking up to 5-A from up to 9V (or higher)
4. **Meters:** 4x "Fluke 75" multi-meters, (equivalent or better).
Alternative Option: (2x) equivalent voltage meters and (2x) equivalent 3-A or higher rated current meters.
5. **Computer:** A Windows 10 based computer with at least one USB port and a USB cable. Must have the latest version of Battery Management Studio installed.
6. **USB-TO-GPIO Communication Kit:** EV2400 USB-based PC interface board.
7. **Software:** BQStudio software with latest .bqz file for BQ2562x provided by Texas Instruments. Download and install bqStudio from <https://www.ti.com/tool/BQSTUDIO>.

2.2 Hardware Setup

Use the following list to set up the EVM testing equipment:

1. Review EVM jumper connections in [Table 1-3](#)
2. Set PS #1 for 5-V DC, 2-A current limit and then turn off the supply.
3. Connect the output of PS#1 in series with a current meter to J1 (VBUS and PGND).
4. Connect a voltage meter across TP10 (VBUS) and TP31 (PGND), or across J1.
5. Turn on Load #1, set to constant voltage mode, and output to 2.5-V. Disable Load. Connect Load in series with a current meter (multimeter), ground side, to J4 (BAT and PGND) as shown in [Figure 2-1](#) in not using a source meter with current measuring capabilities.
6. Connect a voltage meter across TP13 (BAT) and TP30 (PGND), or across J4-3 and J4-1 as in [Figure 2-1](#)
7. Connect a voltage meter across TP14 (SYS) and TP30 (PGND), or across J2-1 and J2-2 as in [Figure 2-1](#)
8. Connect a voltage meter across TP12 (PMID) or TP11 (VPB) and TP32 (PGND), or across J3-1 and J3-2 as in [Figure 2-1](#)
9. Connect the EV2400 USB interface board to the computer with a USB cable and from I2C port to J5 with the 4-pin cable as in [Figure 2-1](#)
10. Install shunts as shown in [Table 1-3](#). Note that the shunts in [Figure 2-1](#) are not necessarily installed per the table.

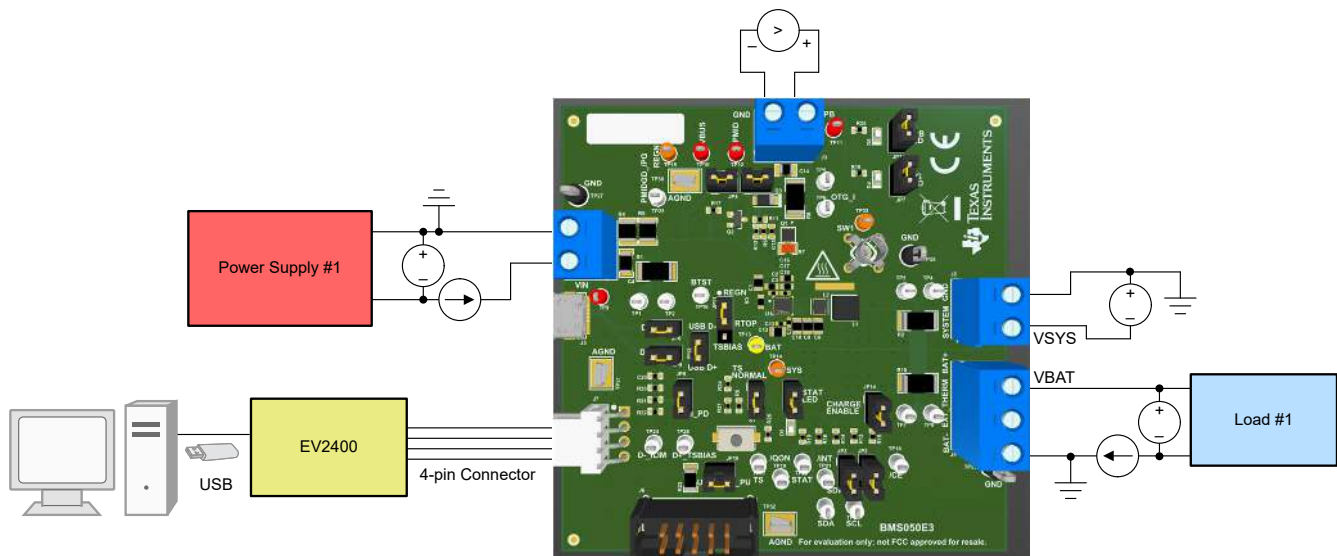


Figure 2-1. Test Setup for BQ25620EVM and BQ25622EVM

2.3 Software Setup

Use the following to set up the EVM testing software:

1. On the computer connected to the EV2400 interface board, launch Battery Management Studio (BQStudio). Select Charger as seen in [Figure 2-2](#).

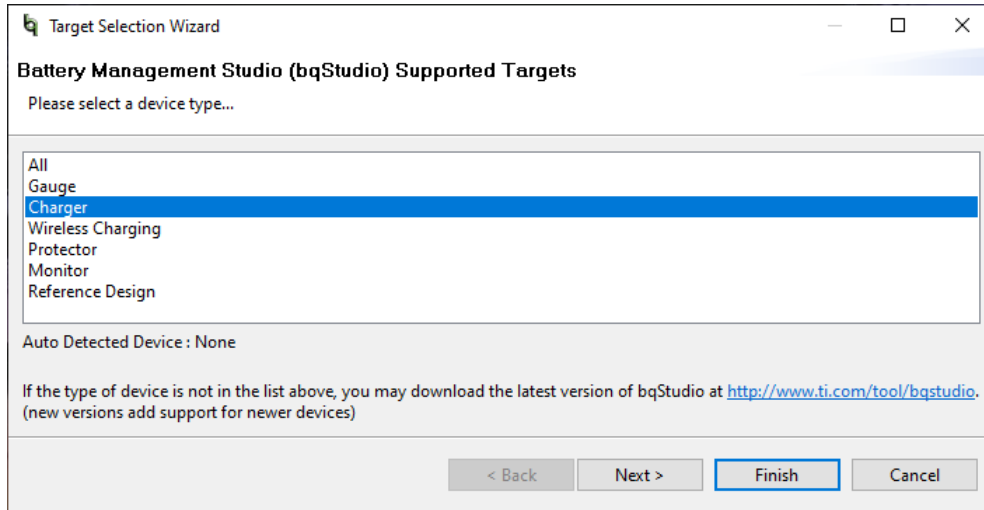


Figure 2-2. BQStudio Device Type Selection Window

2. Select the appropriate configuration file based on the device from the window shown in [Figure 2-3](#).

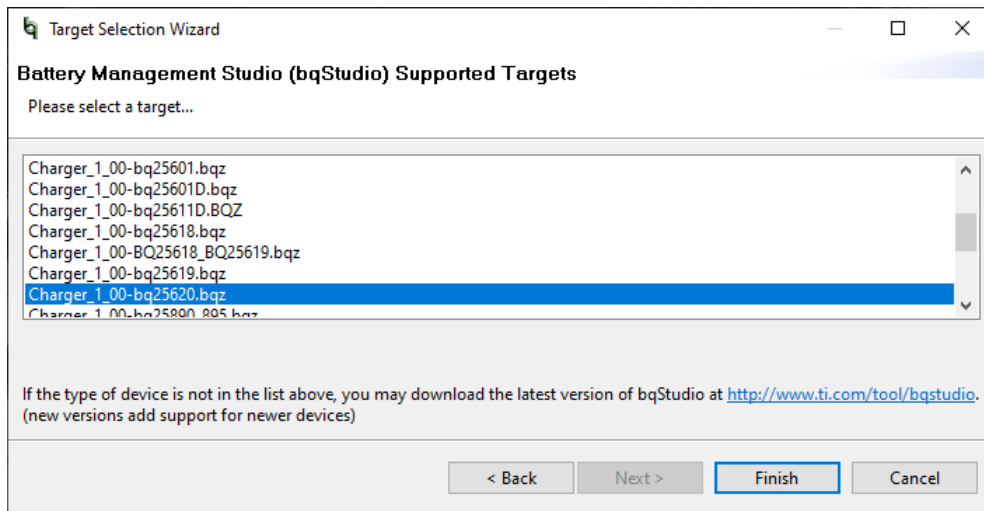
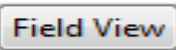


Figure 2-3. BQStudio Charger Selection Window

3. Choose  , on the window that appears, and the main window of the BQ25620/2 EVM software will appear, as shown in [Figure 2-4](#).

File View Window Help

Charger Advanced Comm SMB Errors

BQ25620/2 Default View BQ25620/2 Field View

Registers

Save Registers Load Registers Start Log Write Register Read Register Auto Read: OFF Update Mode Immediate I2C Address D6(6B) Default View Hide Register bit View

8 Bit Registers 16 Bit Registers

FWD/Charge Multi-bit Registers

ITRICKLE	TOPOFF_TMR
PRECHG_TMR	CHG_TMR
TREG	VBUS_OVP
VBAT_UVLO	CHG_RATE
TS_ISET_WARM	TS_ISET_COOL
TS_TH1_TH2_TH3	TS_TH4_TH5_TH6
TS_VSET_WARM	TS_VSET_SYM
TS_VSET_PREWARM	TS_ISET_PREWARM
TS_ISET_PRECOOL	

FWD/Charge Single-bit Registers

<input type="checkbox"/> Q1_FULLON	<input type="checkbox"/> Q4_FULLON
<input type="checkbox"/> EN_TERM	<input type="checkbox"/> VINDPM_BAT_TRACK
<input type="checkbox"/> VRECHG	<input type="checkbox"/> EN_AUTO_INDET
<input type="checkbox"/> FORCE_INDET	<input type="checkbox"/> EN_DCP_BIAS
<input type="checkbox"/> TMR2X_EN	<input type="checkbox"/> EN_SAFETY_TMRS
<input type="checkbox"/> PFM_FWD_DIS	<input type="checkbox"/> 620-EN_9V / 622-NA
<input type="checkbox"/> 620-EN_12V / 622-EN_EXTILIM	

Device Single-bit Registers

<input type="checkbox"/> DIS_STAT	<input type="checkbox"/> EN_AUTO_IBATDIS	<input type="checkbox"/> FORCE_IBATDIS	<input type="checkbox"/> EN_CHG
<input type="checkbox"/> EN_HI_Z	<input type="checkbox"/> FORCE_PMIID_DIS	<input type="checkbox"/> WD_RST	<input type="checkbox"/> REG_RST
<input type="checkbox"/> EN_OTG	<input type="checkbox"/> BATFET_CTRL_VVVBUS	<input type="checkbox"/> TS_IGNORE	

Device Multi-bit Registers

WATCHDOG	SET_CONV_FREQ
SET_CONV_STRN	BATFET_DLY
BATFET_CTRL	IBAT_PEAK
PN	DEV_REV

REVOTG Single-bit Registers

PFM_OTG_DIS

REVOTG Multi-bit Registers

VBAT_OTG_MIN	TS_TH_OTG_HOT
TS_TH_OTG_COLD	

ADC Single-bit Registers

<input type="checkbox"/> ADC_EN	<input type="checkbox"/> ADC_RATE	<input type="checkbox"/> ADC_AVG	<input type="checkbox"/> ADC_AVG_INIT
<input type="checkbox"/> IBUS_ADC_DIS	<input type="checkbox"/> IBAT_ADC_DIS	<input type="checkbox"/> VBUS_ADC_DIS	<input type="checkbox"/> VBAT_ADC_DIS
<input type="checkbox"/> VSYS_ADC_DIS	<input type="checkbox"/> TS_ADC_DIS	<input type="checkbox"/> TDIE_ADC_DIS	<input type="checkbox"/> VPMID_ADC_DIS

ADC Multi-bit Registers

ADC_SAMPLE

Status Single-bit Registers

ADC_DONE_STAT	TREG_STAT
VSYS_STAT	IINDPM_STAT
VINDPM_STAT	SAFETY_TMR_STAT
WD_STAT	VBUS_FAULT_STAT
BAT_FAULT_STAT	VSYS_FAULT_STAT
OTG_FAULT_STAT	TSHUT_STAT

Status Multi-bit Registers

CHG_STAT	VBUS_STAT
TS_STAT	

Flag Single-bit Registers

<input type="checkbox"/> ADC_DONE_FLAG	<input type="checkbox"/> TREG_FLAG	<input type="checkbox"/> VSYS_FLAG	<input type="checkbox"/> IINDPM_FLAG
<input type="checkbox"/> VINDPM_FLAG	<input type="checkbox"/> SAFETY_TMR_FLAG	<input type="checkbox"/> WD_FLAG	<input type="checkbox"/> CHG_FLAG
<input type="checkbox"/> VBUS_FLAG	<input type="checkbox"/> VBUS_FAULT_FLAG	<input type="checkbox"/> BAT_FAULT_FLAG	<input type="checkbox"/> VSYS_FAULT_FLAG
<input type="checkbox"/> OTG_FAULT_FLAG	<input type="checkbox"/> TSHUT_FLAG	<input type="checkbox"/> TS_FLAG	

Mask Single-bit Registers

<input type="checkbox"/> ADC_DONE_MASK	<input type="checkbox"/> TREG_MASK	<input type="checkbox"/> VSYS_MASK	<input type="checkbox"/> IINDPM_MASK
<input type="checkbox"/> VINDPM_MASK	<input type="checkbox"/> SAFETY_TMR_MASK	<input type="checkbox"/> WD_MASK	<input type="checkbox"/> CHG_MASK
<input type="checkbox"/> VBUS_MASK	<input type="checkbox"/> VBUS_FAULT_MASK	<input type="checkbox"/> BAT_FAULT_MASK	<input type="checkbox"/> VSYS_FAULT_MASK
<input type="checkbox"/> OTG_FAULT_MASK	<input type="checkbox"/> TSHUT_MASK	<input type="checkbox"/> TS_MASK	

Figure 2-4. Main Window of BQ25620/2 EVM Software

2.4 Test Procedure

2.4.1 Initial Power Up

Use the following steps for enabling the EVM test setup:


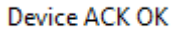
1. Ensure that [Section 2.2](#) steps have been followed.
2. Ensure that [Section 2.3](#) steps have been followed.
3. Turn on PS #1:
 - **Measure** → V_{SYS} (SYS-TP19 and PGND-TP21) = 3.70V ±0.2V

Note

Completely disconnect Load #1 from BATTERY connections if different value is seen.

2.4.2 I²C Register Communication Verification

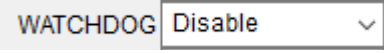


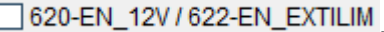


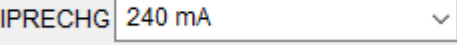
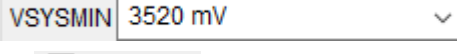
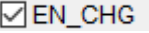
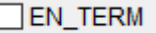
Use the following steps for communication verification :

1. In the EVM software, click the  button
 - Verify that the GUI reads  in the top right corner.

Note


If the device reads  verify [Section 2.2](#) and [Section 2.4.1](#) steps have been followed.

2. In the Field View (see [Figure 2-4](#)), make the following changes as necessary:

- Set 
- Set 
- Set 
 - Note that BQ25622 ILIM pin resistor clamps the input current to 1-A unless that pin is disabled using 
- Set 
- Set 
- Set 
- Set 
- Check 
- Uncheck 

2.4.3 Charger Mode Verification

Use the following steps for charger mode verification:

1. PS #1 should be on from [Section 2.4.1](#). In the EVM software, click  **twice**.
 - Verify that all Fault statuses read "Normal"

Status Single-bit Registers			
ADC_DONE_STAT	Conversion not complete	TREG_STAT	Normal
VSYS_STAT	Not in VSYSMIN regulation (BA	IINDPM_STAT	Normal
VINDPM_STAT	Normal	SAFETY_TMR_STAT	Normal
WD_STAT	Normal	VBUS_FAULT_STAT	Normal
BAT_FAULT_STAT	Normal	VSYS_FAULT_STAT	Normal
OTG_FAULT_STAT	Normal	TSHUT_STAT	Normal
Status Multi-bit Registers			
CHG_STAT	Trickle Charge, PreCharge, or Fast Ch	VBUS_STAT	USB DCP (1.5A)
TS_STAT	TS_NORMAL		

- To confirm SYS voltage regulation, enable Load #1 (see [Section 2.2](#)) and take DMM measurements as follows:
 - Measure** → V_{SYS} (SYS-TP14 and PGND-TP27 or TP28 or TP29) = 3.65V ±0.3V
 - Measure** → V_{BAT} (BAT-TP13 and PGND-TP27 or TP28 or TP29) = 2.5V ±0.2V
 - Measure** → I_{BAT} = 240mA ±50mA
- To confirm battery charge current regulation, change Load #1 to 3.7V and take DMM measurements as follows:
 - Measure** → V_{SYS} (SYS-TP14 and PGND-TP27 or TP28 or TP29) = 3.8V ±0.3V
 - Measure** → V_{BAT} (BAT-TP13 and PGND-TP27 or TP28 or TP29) = 3.7V ±0.2V
 - Measure** → I_{BAT} = 480mA ±100mA
- To confirm input current limit operation, in the EVM software on the 16-bit tab, set fast charge current to 1040mA and then take DMM measurement (or PS #1 measurement if accurate) as follows:
 - Measure** → I_{IN} = 500mA ±200mA

2.4.4 Boost Mode Verification

Use the following steps for boost mode verification:

- Turn off and disconnect PS #1.
- Set Load #1, the battery simulator, to 3.7V and 2A current limit.

Note

If Load #1 connected from BATTERY-J4(3) to GND-J4(1) is not a four quadrant supply, remove Load #1 and use PS #1, set to 3.7V, 2A current limit and connect to BATTERY-J4(3) and GND-J4(1).

- In the EVM software on the 16-bit tab, confirm that VOTG, the OTG regulation voltage, is set to 5.04V and IOTG, the OTG current limit, is set to 1000 mA.

REV/OTG Multi-bit Registers			
IOTG	1000 mA	VOTG	5040 mV

- In the EVM software on the 8-bit tab under the Device Single Bit registers, enable OTG (EN_CHG can remain enabled).

EN_OTG

- Connect Load #2 across VPB-J3(1) and PGND-J3(2).
- Set Load #2 to 500mA constant current load (or resistance of 2.5 W) and the turn on the load.
- To confirm the VOTG regulation,
 - Measure** → V_{BUS} = 5.04 V ± 25 mV
- Turn off and disconnect the power supply.
- Remove Load #2 from the connection.

2.4.5 Helpful Tips

1. The leads and cables to the various power supplies, batteries and loads have resistance. The current meters also have series resistance. The charger dynamically reduces charge current depending on the voltage sensed at its VBUS pin (using the VINDPM feature), BAT pin (as part of normal termination), and TS pin (through its battery temperature monitoring feature via battery thermistor). Therefore, voltmeters must be used to measure the voltage as close to the IC pins as possible instead of relying on the digital readouts of the power supply. If a battery thermistor is not available, that shunts JP11 and JP13 are in place.
2. When using a source meter that can source and sink current as your battery simulator, TI highly recommends adding a large ($\geq 1000+ \mu\text{F}$) capacitor at the EVM BATTERY and GND connector in order to prevent oscillations at the BAT pin due to mismatched impedances of the charger output and source meter input within their respective regulation loop bandwidths. Configuring the source meter for 4-wire sensing eliminates the need for a separate voltmeter to measure the voltage at the BAT pin. When using 4-wire sensing, always ensure that the sensing leads are properly connected in order to prevent accidental overvoltage by the power leads.
3. For precise measurements of input and output current, especially near termination, the current meter in series with the battery or battery simulator should not be set to auto-range and may need to be removed entirely. An alternate method for measuring charge current is to either use an oscilloscope with hall effect current probe or by a differential voltage measurement across the relevant sensing resistors populated on the BQ2526xEVM.

3 PCB Layout Guideline

Minimize the switching node rise and fall times for minimum switching loss. Proper layout of the components minimizing high-frequency current path loop is important to prevent electrical and magnetic field radiation and high-frequency resonant problems. This PCB layout priority list must be followed in the order presented for proper layout:

1. For lowest switching noise during forward/charge mode, place the decoupling PMID capacitor and then bulk PMID capacitor positive terminals as close as possible to PMID pin. Place the capacitor ground terminal close to the GND pin using the shortest copper trace connection or GND plane on the same layer as the IC.
2. For lowest switching noise during reverse/OTG mode, place the SYS output capacitors' positive terminals near the SYS pin. The capacitors' ground terminals must be via'd down through multiple vias to an all ground internal layer that returns to IC GND pin through multiple vias under the IC.
3. Since REGN powers the internal gate drivers, place the REGN capacitor positive terminal close to REGN pin to minimize switching noise. The capacitor's ground terminal must be via'd down through multiple vias to an all ground internal layer that returns to IC GND pin through multiple vias under the IC.
4. Place the VBUS and BAT capacitors' positive terminals as close to the VBUS and BAT pins as possible. The capacitors' ground terminals must be via'd down through multiple vias to an all ground internal layer that returns to IC GND pin through multiple vias under the IC.
5. Place the inductor input pin near the positive terminal of the SYS pin capacitors. Due to the PMID capacitor placement requirements, the inductor's switching node terminal must be via'd down with multiple vias to a second internal layer with a wide trace that returns to the SW pin with multiple vias. Using multiple vias ensures that the via's additional resistance is negligible compared to the inductor's dc resistance and therefore does not impact efficiency. The vias additional series inductance is negligible compared to the inductor's inductance.
6. Place the BTST capacitor on the opposite side from the IC using vias to connect to the BTST pin and SW node.
7. A separate analog GND plane for non-power related resistors and capacitors is not required if those components are placed away from the power components traces and planes.
8. Ensure that the I²C SDA and SCL lines are routed away from the SW node.

Additionally, it is important that the PCB footprint and solder mask cover the entire length of each of the pins. GND, SW, PMID, SYS and BAT pins extend further into the package than the other pins. Using the entire length of these pins reduces parasitic resistance and increases thermal conductivity from the package into the board.

See the EVM design for the recommended component placement with trace and via locations.

4 Board Layout, Schematic, and Bill of Materials

4.1 Board Layout

The following figures illustrate the PCB board layers.

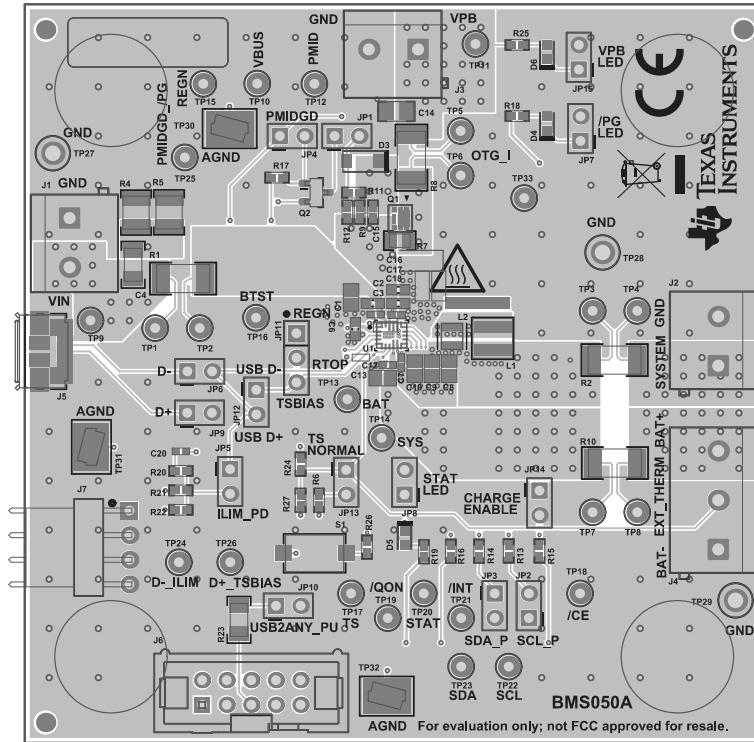


Figure 4-1. BMS050 Top Layer

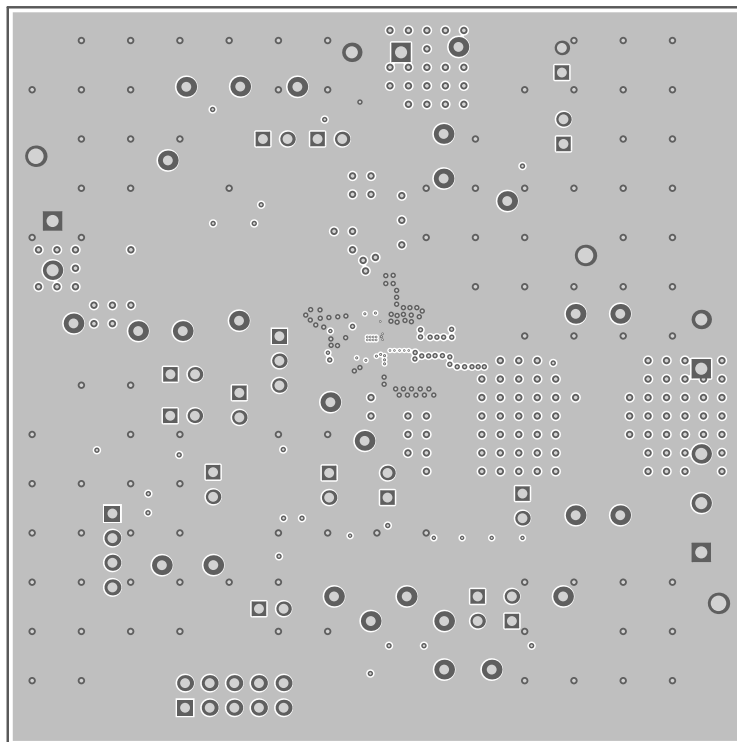


Figure 4-2. BMS050 Internal Layer 1

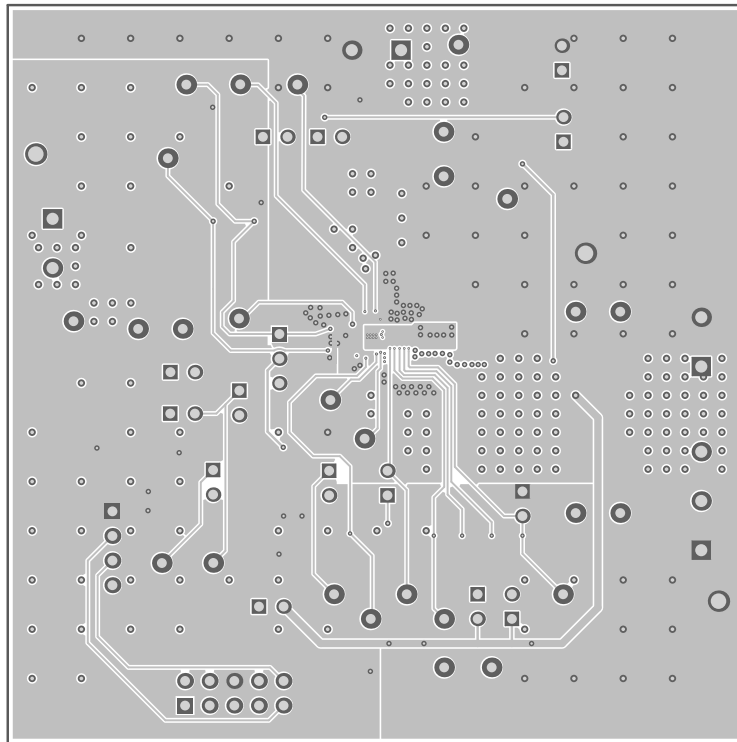


Figure 4-3. BMS050 Internal Layer 2

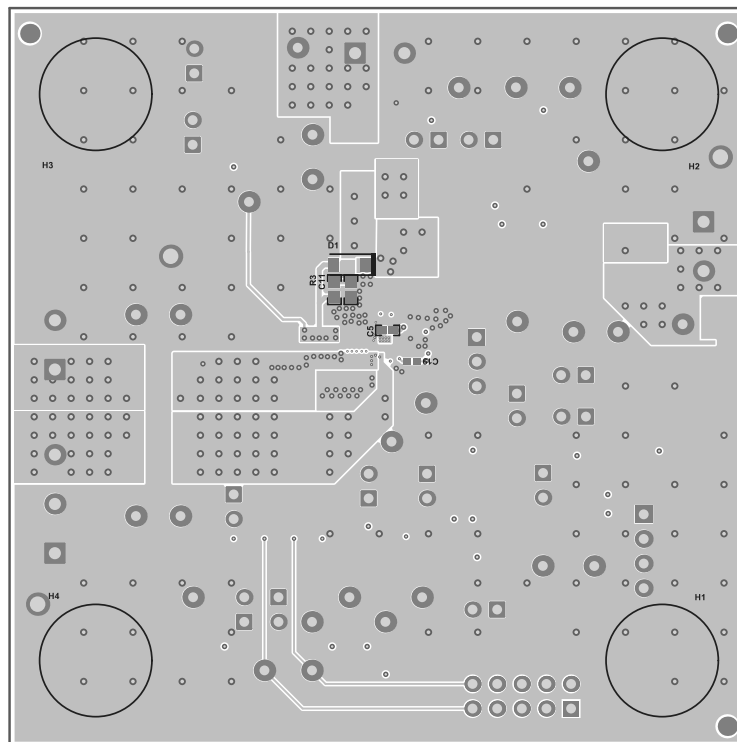


Figure 4-4. BMS050 Bottom Layer

4.2 Schematic

The schematics for the BQ25620EVM and BQ25622EVM are shown in the following figures.

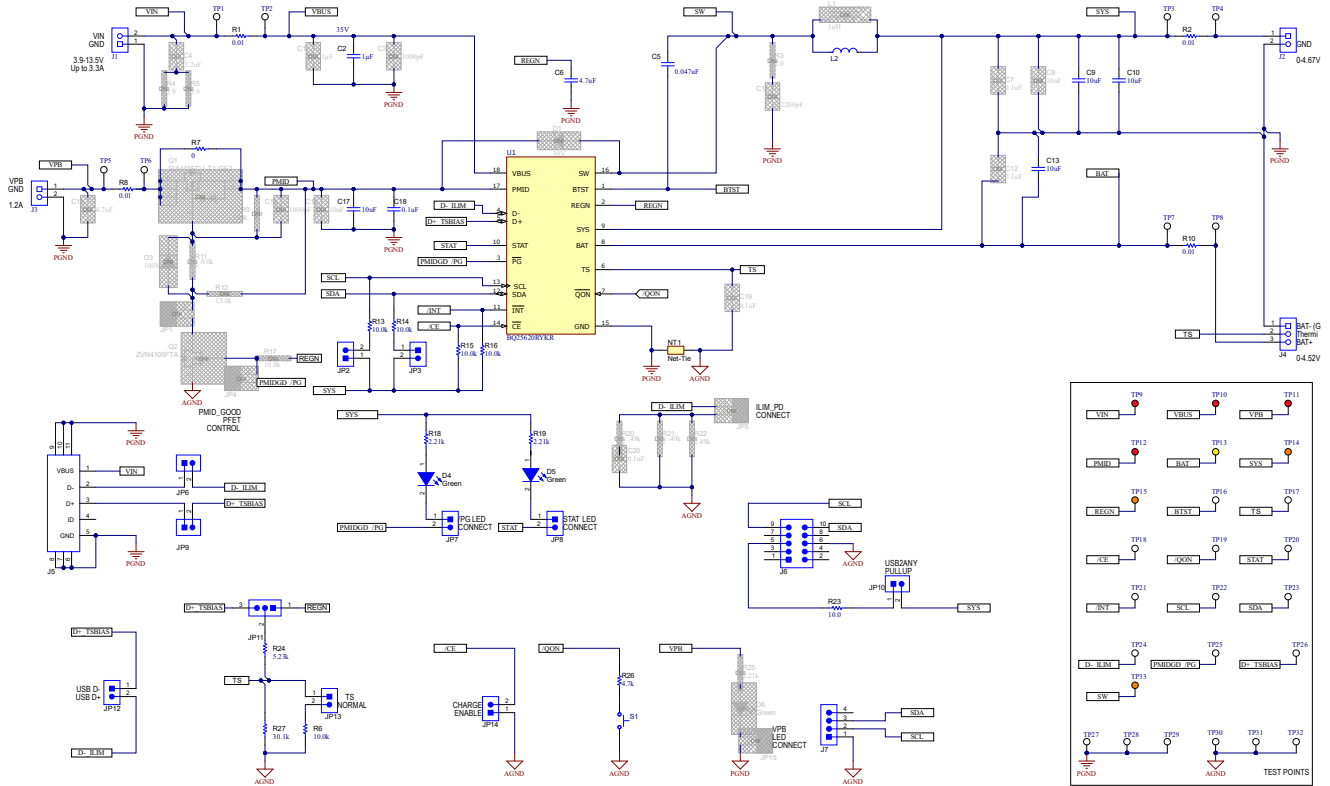


Figure 4-5. BQ25620EVM Schematic

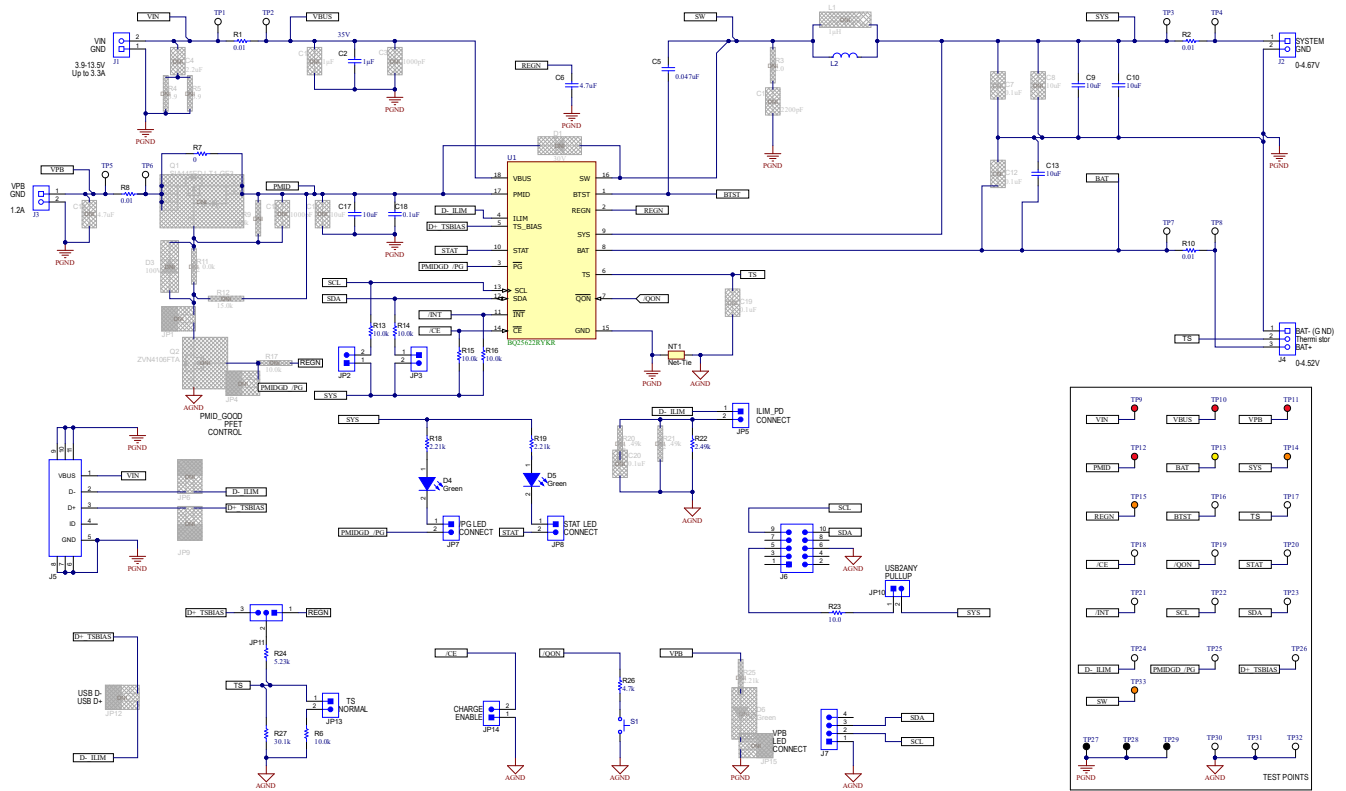


Figure 4-6. BQ25622EVM Schematic

4.3 Bill of Materials

Table 4-1 lists the BQ25620EVM and BQ25622EVM BOM.

Table 4-1. BMS050 Bill of Materials

Designator	620EVM	622EVM	Value	Description	Package Reference	Part Number	Manufacturer
C2	1	1	1uF	CAP, CERM, 1 uF, 35 V, +/- 10%, X7R, AEC-Q200 Grade 0, 0603	603	GMK107AB710 5KAHT	Taiyo Yuden
C5	1	1	0.047uF	CAP, CERM, 0.047 uF, 25 V, +/- 10%, X7R, 0402	402	GRM155R71E4 73KA88D	MuRata
C6	1	1	4.7uF	CAP, CERM, 4.7 uF, 25 V, +/- 10%, X5R, 0603	603	GRM188R61E4 75KE11D	MuRata
C9, C10, C13	3	3	10uF	CAP, CERM, 10 uF, 25 V, +/- 10%, X5R, 0805	805	C2012X5R1E10 6K125AB	TDK
C17	1	1	10uF	CAP, CERM, 10 uF, 25 V, +/- 20%, X5R, 0603	603	GRT188R61E1 06ME13D	MuRata
C18	1	1	0.1uF	CAP, CERM, 0.1 uF, 50 V, +/- 10%, X7R, 0402	402	C1005X7R1H1 04K050BE	TDK
D4, D5	2	1	Green	LED, Green, SMD	1.6x0.8x0.8mm	LTST-C190GKT	Lite-On
H1, H2, H3, H4	4	4		Bumpon, Hemisphere, 0.44 X 0.20, Clear	Transparent Bumpon	SJ-5303 (CLEAR)	3M
J1, J2, J3	3	3		Terminal Block, 5.08 mm, 2x1, Brass, TH	2x1 5.08 mm Terminal Block	ED120/2DS	On-Shore Technology
J4	1	1		Terminal Block, 5.08 mm, 3x1, Brass, TH	3x1 5.08 mm Terminal Block	ED120/3DS	On-Shore Technology
J5	1	1		Connector, Receptacle, Micro-USB Type B, R/A, Bottom Mount SMT	7.5x2.45x5mm	473460001	Molex
J6	1	1		Header (shrouded), 100mil, 5x2, High-Temperature, Gold, TH	5x2 Shrouded header	N2510-6002-RB	3M
J7	1	1		Header (friction lock), 100mil, 4x1, R/A, TH	4x1 R/A Header	22/05/3041	Molex
JP2, JP3, JP7, JP8, JP10, JP13, JP14	7	7		Header, 100mil, 2x1, Tin, TH	Header, 2 PIN, 100mil, Tin	PEC02SAAN	Sullins Connector Solutions

Table 4-1. BMS050 Bill of Materials (continued)

Designator	620EVM	622EVM	Value	Description	Package Reference	Part Number	Manufacturer
JP6, JP9, JP12	3	0		Header, 100mil, 2x1, Tin, TH	Header, 2 PIN, 100mil, Tin	PEC02SAAN	Sullins Connector Solutions
JP5	0	1		Header, 100mil, 2x1, Tin, TH	Header, 2 PIN, 100mil, Tin	PEC02SAAN	Sullins Connector Solutions
JP11	1	1		Header, 100mil, 3x1, Tin, TH	Header, 3 PIN, 100mil, Tin	PEC03SAAN	Sullins Connector Solutions
L2	1	1	1uH	1µH @ 20% Shielded Molded Inductor 4.2A 42mOhm Max 1008 Isat: 4.6A (2520 Metric) -	SMT_IND_2MM 0_2MM5	252012CDMCD DS-1R0MC	Sumida
R1, R2, R8, R10	4	4	0.01	RES, 0.01, 1%, 1 W, 2010	2010	WSL2010R010 0FEA18	Vishay-Dale
R6, R13, R14, R15, R16	5	5	10.0k	RES, 10.0 k, 1%, 0.063 W, AEC-Q200 Grade 0, 0402	402	CRCW040210K 0FKED	Vishay-Dale
R7	1	1	0	RES, 0, 1%, 0.5 W, 0805	805	5106	Keystone
R18, R19	2	2	2.21k	RES, 2.21 k, 1%, 0.063 W, AEC-Q200 Grade 0, 0402	402	CRCW04022K2 1FKED	Vishay-Dale
R22	0	1	2.49k	RES, 2.49 k, 1%, 0.063 W, AEC-Q200 Grade 0, 0402	402	CRCW04022K4 9FKED	Vishay-Dale
R23	1	1	10	RES, 10.0, 1%, 0.25 W, AEC-Q200 Grade 0, 1206	1206	ERJ-8ENF10R0 V	Panasonic
R24	1	1	5.23k	RES, 5.23 k, 1%, 0.063 W, AEC-Q200 Grade 0, 0402	402	CRCW04025K2 3FKED	Vishay-Dale
R26	1	1	4.7k	RES, 4.7 k, 5%, 0.063 W, AEC-Q200 Grade 0, 0402	402	CRCW04024K7 0JNED	Vishay-Dale
R27	1	1	30.1k	RES, 30.1 k, 1%, 0.063 W, AEC-Q200 Grade 0, 0402	402	CRCW040230K 1FKED	Vishay-Dale
S1	1	1		Switch, Normally open, 2.3N force, 200k operations, SMD	KSR	KSR221GLFS	C&K Components
SH-JP2, SH-JP3, SH-JP7, SH-JP8, SH-JP10, SH-JP11, SH-JP13, SH-JP14	8	8	1x2	Shunt, 100mil, Gold plated, Black	Shunt	SNT-100-BK-G	Samtec

Table 4-1. BMS050 Bill of Materials (continued)

Designator	620EVM	622EVM	Value	Description	Package Reference	Part Number	Manufacturer
SH-JP6, SH-JP9, SH-JP12	3	0	1x2	Shunt, 100mil, Gold plated, Black	Shunt	SNT-100-BK-G	Samtec
JP5	0	1	1x2	Shunt, 100mil, Gold plated, Black	Shunt	SNT-100-BK-G	Samtec
TP1, TP2, TP3, TP4, TP5, TP6, TP7, TP8, TP16, TP17, TP18, TP19, TP20, TP21, TP22, TP23, TP24, TP25, TP26	19	19		Test Point, Miniature, White, TH	White Miniature Testpoint	5002	Keystone
TP9, TP10, TP11, TP12	4	4		Test Point, Miniature, Red, TH	Red Miniature Testpoint	5000	Keystone
TP13	1	1		Test Point, Miniature, Yellow, TH	Yellow Miniature Testpoint	5004	Keystone
TP14, TP15, TP33	3	3		Test Point, Miniature, Orange, TH	Orange Miniature Testpoint	5003	Keystone
TP27, TP28, TP29	3			Test Point, Multipurpose, Black, TH	Black Multipurpose Testpoint	5011	Keystone
TP30, TP31, TP32	3	3		Test Point, Compact, SMT	Testpoint_Keystone_Compact	5016	Keystone
U1	1	0		I2C Controlled, 3.5-A or 2-A, Maximum 17V or 18V Input, Charger with NVDC Power Path Management and OTG Output	WQFN-HR18	BQ25620RYKR	Texas Instruments
U1	0	1		I2C Controlled, 3.5-A or 2-A, Maximum 17V or 18V Input, Charger with NVDC Power Path Management and OTG Output	WQFN-HR18	BQ25622RYKR	Texas Instruments

5 Revision History

NOTE: Page numbers for previous revisions may differ from page numbers in the current version.

Changes from Revision * (October 2022) to Revision A (November 2022)

Page

- | | |
|-----------------------------------------|---|
| • Added BQ25622EVM to user's guide..... | 2 |
|-----------------------------------------|---|

STANDARD TERMS FOR EVALUATION MODULES

1. *Delivery:* TI delivers TI evaluation boards, kits, or modules, including any accompanying demonstration software, components, and/or documentation which may be provided together or separately (collectively, an "EVM" or "EVMs") to the User ("User") in accordance with the terms set forth herein. User's acceptance of the EVM is expressly subject to the following terms.
 - 1.1 EVMs are intended solely for product or software developers for use in a research and development setting to facilitate feasibility evaluation, experimentation, or scientific analysis of TI semiconductors products. EVMs have no direct function and are not finished products. EVMs shall not be directly or indirectly assembled as a part or subassembly in any finished product. For clarification, any software or software tools provided with the EVM ("Software") shall not be subject to the terms and conditions set forth herein but rather shall be subject to the applicable terms that accompany such Software
 - 1.2 EVMs are not intended for consumer or household use. EVMs may not be sold, sublicensed, leased, rented, loaned, assigned, or otherwise distributed for commercial purposes by Users, in whole or in part, or used in any finished product or production system.
2. *Limited Warranty and Related Remedies/Disclaimers:*
 - 2.1 These terms do not apply to Software. The warranty, if any, for Software is covered in the applicable Software License Agreement.
 - 2.2 TI warrants that the TI EVM will conform to TI's published specifications for ninety (90) days after the date TI delivers such EVM to User. Notwithstanding the foregoing, TI shall not be liable for a nonconforming EVM if (a) the nonconformity was caused by neglect, misuse or mistreatment by an entity other than TI, including improper installation or testing, or for any EVMs that have been altered or modified in any way by an entity other than TI, (b) the nonconformity resulted from User's design, specifications or instructions for such EVMs or improper system design, or (c) User has not paid on time. Testing and other quality control techniques are used to the extent TI deems necessary. TI does not test all parameters of each EVM. User's claims against TI under this Section 2 are void if User fails to notify TI of any apparent defects in the EVMs within ten (10) business days after delivery, or of any hidden defects with ten (10) business days after the defect has been detected.
 - 2.3 TI's sole liability shall be at its option to repair or replace EVMs that fail to conform to the warranty set forth above, or credit User's account for such EVM. TI's liability under this warranty shall be limited to EVMs that are returned during the warranty period to the address designated by TI and that are determined by TI not to conform to such warranty. If TI elects to repair or replace such EVM, TI shall have a reasonable time to repair such EVM or provide replacements. Repaired EVMs shall be warranted for the remainder of the original warranty period. Replaced EVMs shall be warranted for a new full ninety (90) day warranty period.

WARNING

Evaluation Kits are intended solely for use by technically qualified, professional electronics experts who are familiar with the dangers and application risks associated with handling electrical mechanical components, systems, and subsystems.

User shall operate the Evaluation Kit within TI's recommended guidelines and any applicable legal or environmental requirements as well as reasonable and customary safeguards. Failure to set up and/or operate the Evaluation Kit within TI's recommended guidelines may result in personal injury or death or property damage. Proper set up entails following TI's instructions for electrical ratings of interface circuits such as input, output and electrical loads.

NOTE:

EXPOSURE TO ELECTROSTATIC DISCHARGE (ESD) MAY CAUSE DEGRADATION OR FAILURE OF THE EVALUATION KIT; TI RECOMMENDS STORAGE OF THE EVALUATION KIT IN A PROTECTIVE ESD BAG.

3 Regulatory Notices:

3.1 United States

3.1.1 Notice applicable to EVMs not FCC-Approved:

FCC NOTICE: This kit is designed to allow product developers to evaluate electronic components, circuitry, or software associated with the kit to determine whether to incorporate such items in a finished product and software developers to write software applications for use with the end product. This kit is not a finished product and when assembled may not be resold or otherwise marketed unless all required FCC equipment authorizations are first obtained. Operation is subject to the condition that this product not cause harmful interference to licensed radio stations and that this product accept harmful interference. Unless the assembled kit is designed to operate under part 15, part 18 or part 95 of this chapter, the operator of the kit must operate under the authority of an FCC license holder or must secure an experimental authorization under part 5 of this chapter.

3.1.2 For EVMs annotated as FCC – FEDERAL COMMUNICATIONS COMMISSION Part 15 Compliant:

CAUTION

This device complies with part 15 of the FCC Rules. Operation is subject to the following two conditions: (1) This device may not cause harmful interference, and (2) this device must accept any interference received, including interference that may cause undesired operation.

Changes or modifications not expressly approved by the party responsible for compliance could void the user's authority to operate the equipment.

FCC Interference Statement for Class A EVM devices

NOTE: This equipment has been tested and found to comply with the limits for a Class A digital device, pursuant to part 15 of the FCC Rules. These limits are designed to provide reasonable protection against harmful interference when the equipment is operated in a commercial environment. This equipment generates, uses, and can radiate radio frequency energy and, if not installed and used in accordance with the instruction manual, may cause harmful interference to radio communications. Operation of this equipment in a residential area is likely to cause harmful interference in which case the user will be required to correct the interference at his own expense.

FCC Interference Statement for Class B EVM devices

NOTE: This equipment has been tested and found to comply with the limits for a Class B digital device, pursuant to part 15 of the FCC Rules. These limits are designed to provide reasonable protection against harmful interference in a residential installation. This equipment generates, uses and can radiate radio frequency energy and, if not installed and used in accordance with the instructions, may cause harmful interference to radio communications. However, there is no guarantee that interference will not occur in a particular installation. If this equipment does cause harmful interference to radio or television reception, which can be determined by turning the equipment off and on, the user is encouraged to try to correct the interference by one or more of the following measures:

- Reorient or relocate the receiving antenna.
- Increase the separation between the equipment and receiver.
- Connect the equipment into an outlet on a circuit different from that to which the receiver is connected.
- Consult the dealer or an experienced radio/TV technician for help.

3.2 Canada

3.2.1 For EVMs issued with an Industry Canada Certificate of Conformance to RSS-210 or RSS-247

Concerning EVMs Including Radio Transmitters:

This device complies with Industry Canada license-exempt RSSs. Operation is subject to the following two conditions:

(1) this device may not cause interference, and (2) this device must accept any interference, including interference that may cause undesired operation of the device.

Concernant les EVMs avec appareils radio:

Le présent appareil est conforme aux CNR d'Industrie Canada applicables aux appareils radio exempts de licence. L'exploitation est autorisée aux deux conditions suivantes: (1) l'appareil ne doit pas produire de brouillage, et (2) l'utilisateur de l'appareil doit accepter tout brouillage radioélectrique subi, même si le brouillage est susceptible d'en compromettre le fonctionnement.

Concerning EVMs Including Detachable Antennas:

Under Industry Canada regulations, this radio transmitter may only operate using an antenna of a type and maximum (or lesser) gain approved for the transmitter by Industry Canada. To reduce potential radio interference to other users, the antenna type and its gain should be so chosen that the equivalent isotropically radiated power (e.i.r.p.) is not more than that necessary for successful communication. This radio transmitter has been approved by Industry Canada to operate with the antenna types listed in the user guide with the maximum permissible gain and required antenna impedance for each antenna type indicated. Antenna types not included in this list, having a gain greater than the maximum gain indicated for that type, are strictly prohibited for use with this device.

Concernant les EVMs avec antennes détachables

Conformément à la réglementation d'Industrie Canada, le présent émetteur radio peut fonctionner avec une antenne d'un type et d'un gain maximal (ou inférieur) approuvé pour l'émetteur par Industrie Canada. Dans le but de réduire les risques de brouillage radioélectrique à l'intention des autres utilisateurs, il faut choisir le type d'antenne et son gain de sorte que la puissance isotrope rayonnée équivalente (p.i.r.e.) ne dépasse pas l'intensité nécessaire à l'établissement d'une communication satisfaisante. Le présent émetteur radio a été approuvé par Industrie Canada pour fonctionner avec les types d'antenne énumérés dans le manuel d'usage et ayant un gain admissible maximal et l'impédance requise pour chaque type d'antenne. Les types d'antenne non inclus dans cette liste, ou dont le gain est supérieur au gain maximal indiqué, sont strictement interdits pour l'exploitation de l'émetteur.

3.3 Japan

3.3.1 *Notice for EVMs delivered in Japan:* Please see http://www.tij.co.jp/lstds/ti_ja/general/eStore/notice_01.page 日本国内に輸入される評価用キット、ボードについては、次のところをご覧ください。
http://www.tij.co.jp/lstds/ti_ja/general/eStore/notice_01.page

3.3.2 *Notice for Users of EVMs Considered "Radio Frequency Products" in Japan:* EVMs entering Japan may not be certified by TI as conforming to Technical Regulations of Radio Law of Japan.

If User uses EVMs in Japan, not certified to Technical Regulations of Radio Law of Japan, User is required to follow the instructions set forth by Radio Law of Japan, which includes, but is not limited to, the instructions below with respect to EVMs (which for the avoidance of doubt are stated strictly for convenience and should be verified by User):

1. Use EVMs in a shielded room or any other test facility as defined in the notification #173 issued by Ministry of Internal Affairs and Communications on March 28, 2006, based on Sub-section 1.1 of Article 6 of the Ministry's Rule for Enforcement of Radio Law of Japan,
2. Use EVMs only after User obtains the license of Test Radio Station as provided in Radio Law of Japan with respect to EVMs, or
3. Use of EVMs only after User obtains the Technical Regulations Conformity Certification as provided in Radio Law of Japan with respect to EVMs. Also, do not transfer EVMs, unless User gives the same notice above to the transferee. Please note that if User does not follow the instructions above, User will be subject to penalties of Radio Law of Japan.

【無線電波を送信する製品の開発キットをお使いになる際の注意事項】 開発キットの中には技術基準適合証明を受けていないものがあります。技術適合証明を受けていないものご使用に際しては、電波法遵守のため、以下のいずれかの措置を取っていただく必要がありますのでご注意ください。

1. 電波法施行規則第6条第1項第1号に基づく平成18年3月28日総務省告示第173号で定められた電波暗室等の試験設備でご使用いただく。
2. 実験局の免許を取得後ご使用いただく。
3. 技術基準適合証明を取得後ご使用いただく。

なお、本製品は、上記の「ご使用にあたっての注意」を譲渡先、移転先に通知しない限り、譲渡、移転できないものとします。

上記を遵守頂けない場合は、電波法の罰則が適用される可能性があることをご留意ください。日本テキサス・インスツルメンツ株式会社
東京都新宿区西新宿 6 丁目 2 4 番 1 号
西新宿三井ビル

3.3.3 *Notice for EVMs for Power Line Communication:* Please see http://www.tij.co.jp/lstds/ti_ja/general/eStore/notice_02.page
電力線搬送波通信についての開発キットをお使いになる際の注意事項については、次のところをご覧ください。http://www.tij.co.jp/lstds/ti_ja/general/eStore/notice_02.page

3.4 European Union

3.4.1 *For EVMs subject to EU Directive 2014/30/EU (Electromagnetic Compatibility Directive):*

This is a class A product intended for use in environments other than domestic environments that are connected to a low-voltage power-supply network that supplies buildings used for domestic purposes. In a domestic environment this product may cause radio interference in which case the user may be required to take adequate measures.

-
- 4 *EVM Use Restrictions and Warnings:*
 - 4.1 EVMS ARE NOT FOR USE IN FUNCTIONAL SAFETY AND/OR SAFETY CRITICAL EVALUATIONS, INCLUDING BUT NOT LIMITED TO EVALUATIONS OF LIFE SUPPORT APPLICATIONS.
 - 4.2 User must read and apply the user guide and other available documentation provided by TI regarding the EVM prior to handling or using the EVM, including without limitation any warning or restriction notices. The notices contain important safety information related to, for example, temperatures and voltages.
 - 4.3 *Safety-Related Warnings and Restrictions:*
 - 4.3.1 User shall operate the EVM within TI's recommended specifications and environmental considerations stated in the user guide, other available documentation provided by TI, and any other applicable requirements and employ reasonable and customary safeguards. Exceeding the specified performance ratings and specifications (including but not limited to input and output voltage, current, power, and environmental ranges) for the EVM may cause personal injury or death, or property damage. If there are questions concerning performance ratings and specifications, User should contact a TI field representative prior to connecting interface electronics including input power and intended loads. Any loads applied outside of the specified output range may also result in unintended and/or inaccurate operation and/or possible permanent damage to the EVM and/or interface electronics. Please consult the EVM user guide prior to connecting any load to the EVM output. If there is uncertainty as to the load specification, please contact a TI field representative. During normal operation, even with the inputs and outputs kept within the specified allowable ranges, some circuit components may have elevated case temperatures. These components include but are not limited to linear regulators, switching transistors, pass transistors, current sense resistors, and heat sinks, which can be identified using the information in the associated documentation. When working with the EVM, please be aware that the EVM may become very warm.
 - 4.3.2 EVMs are intended solely for use by technically qualified, professional electronics experts who are familiar with the dangers and application risks associated with handling electrical mechanical components, systems, and subsystems. User assumes all responsibility and liability for proper and safe handling and use of the EVM by User or its employees, affiliates, contractors or designees. User assumes all responsibility and liability to ensure that any interfaces (electronic and/or mechanical) between the EVM and any human body are designed with suitable isolation and means to safely limit accessible leakage currents to minimize the risk of electrical shock hazard. User assumes all responsibility and liability for any improper or unsafe handling or use of the EVM by User or its employees, affiliates, contractors or designees.
 - 4.4 User assumes all responsibility and liability to determine whether the EVM is subject to any applicable international, federal, state, or local laws and regulations related to User's handling and use of the EVM and, if applicable, User assumes all responsibility and liability for compliance in all respects with such laws and regulations. User assumes all responsibility and liability for proper disposal and recycling of the EVM consistent with all applicable international, federal, state, and local requirements.
 5. *Accuracy of Information:* To the extent TI provides information on the availability and function of EVMs, TI attempts to be as accurate as possible. However, TI does not warrant the accuracy of EVM descriptions, EVM availability or other information on its websites as accurate, complete, reliable, current, or error-free.
 6. *Disclaimers:*
 - 6.1 EXCEPT AS SET FORTH ABOVE, EVMS AND ANY MATERIALS PROVIDED WITH THE EVM (INCLUDING, BUT NOT LIMITED TO, REFERENCE DESIGNS AND THE DESIGN OF THE EVM ITSELF) ARE PROVIDED "AS IS" AND "WITH ALL FAULTS." TI DISCLAIMS ALL OTHER WARRANTIES, EXPRESS OR IMPLIED, REGARDING SUCH ITEMS, INCLUDING BUT NOT LIMITED TO ANY EPIDEMIC FAILURE WARRANTY OR IMPLIED WARRANTIES OF MERCHANTABILITY OR FITNESS FOR A PARTICULAR PURPOSE OR NON-INFRINGEMENT OF ANY THIRD PARTY PATENTS, COPYRIGHTS, TRADE SECRETS OR OTHER INTELLECTUAL PROPERTY RIGHTS.
 - 6.2 EXCEPT FOR THE LIMITED RIGHT TO USE THE EVM SET FORTH HEREIN, NOTHING IN THESE TERMS SHALL BE CONSTRUED AS GRANTING OR CONFERRING ANY RIGHTS BY LICENSE, PATENT, OR ANY OTHER INDUSTRIAL OR INTELLECTUAL PROPERTY RIGHT OF TI, ITS SUPPLIERS/LICENSORS OR ANY OTHER THIRD PARTY, TO USE THE EVM IN ANY FINISHED END-USER OR READY-TO-USE FINAL PRODUCT, OR FOR ANY INVENTION, DISCOVERY OR IMPROVEMENT, REGARDLESS OF WHEN MADE, CONCEIVED OR ACQUIRED.
 7. *USER'S INDEMNITY OBLIGATIONS AND REPRESENTATIONS.* USER WILL DEFEND, INDEMNIFY AND HOLD TI, ITS LICENSORS AND THEIR REPRESENTATIVES HARMLESS FROM AND AGAINST ANY AND ALL CLAIMS, DAMAGES, LOSSES, EXPENSES, COSTS AND LIABILITIES (COLLECTIVELY, "CLAIMS") ARISING OUT OF OR IN CONNECTION WITH ANY HANDLING OR USE OF THE EVM THAT IS NOT IN ACCORDANCE WITH THESE TERMS. THIS OBLIGATION SHALL APPLY WHETHER CLAIMS ARISE UNDER STATUTE, REGULATION, OR THE LAW OF TORT, CONTRACT OR ANY OTHER LEGAL THEORY, AND EVEN IF THE EVM FAILS TO PERFORM AS DESCRIBED OR EXPECTED.
-

8. *Limitations on Damages and Liability:*

8.1 *General Limitations.* IN NO EVENT SHALL TI BE LIABLE FOR ANY SPECIAL, COLLATERAL, INDIRECT, PUNITIVE, INCIDENTAL, CONSEQUENTIAL, OR EXEMPLARY DAMAGES IN CONNECTION WITH OR ARISING OUT OF THESE TERMS OR THE USE OF THE EVMS , REGARDLESS OF WHETHER TI HAS BEEN ADVISED OF THE POSSIBILITY OF SUCH DAMAGES. EXCLUDED DAMAGES INCLUDE, BUT ARE NOT LIMITED TO, COST OF REMOVAL OR REINSTALLATION, ANCILLARY COSTS TO THE PROCUREMENT OF SUBSTITUTE GOODS OR SERVICES, RETESTING, OUTSIDE COMPUTER TIME, LABOR COSTS, LOSS OF GOODWILL, LOSS OF PROFITS, LOSS OF SAVINGS, LOSS OF USE, LOSS OF DATA, OR BUSINESS INTERRUPTION. NO CLAIM, SUIT OR ACTION SHALL BE BROUGHT AGAINST TI MORE THAN TWELVE (12) MONTHS AFTER THE EVENT THAT GAVE RISE TO THE CAUSE OF ACTION HAS OCCURRED.

8.2 *Specific Limitations.* IN NO EVENT SHALL TI'S AGGREGATE LIABILITY FROM ANY USE OF AN EVM PROVIDED HEREUNDER, INCLUDING FROM ANY WARRANTY, INDEMNITY OR OTHER OBLIGATION ARISING OUT OF OR IN CONNECTION WITH THESE TERMS, , EXCEED THE TOTAL AMOUNT PAID TO TI BY USER FOR THE PARTICULAR EVM(S) AT ISSUE DURING THE PRIOR TWELVE (12) MONTHS WITH RESPECT TO WHICH LOSSES OR DAMAGES ARE CLAIMED. THE EXISTENCE OF MORE THAN ONE CLAIM SHALL NOT ENLARGE OR EXTEND THIS LIMIT.

9. *Return Policy.* Except as otherwise provided, TI does not offer any refunds, returns, or exchanges. Furthermore, no return of EVM(s) will be accepted if the package has been opened and no return of the EVM(s) will be accepted if they are damaged or otherwise not in a resalable condition. If User feels it has been incorrectly charged for the EVM(s) it ordered or that delivery violates the applicable order, User should contact TI. All refunds will be made in full within thirty (30) working days from the return of the components(s), excluding any postage or packaging costs.

10. *Governing Law:* These terms and conditions shall be governed by and interpreted in accordance with the laws of the State of Texas, without reference to conflict-of-laws principles. User agrees that non-exclusive jurisdiction for any dispute arising out of or relating to these terms and conditions lies within courts located in the State of Texas and consents to venue in Dallas County, Texas. Notwithstanding the foregoing, any judgment may be enforced in any United States or foreign court, and TI may seek injunctive relief in any United States or foreign court.

Mailing Address: Texas Instruments, Post Office Box 655303, Dallas, Texas 75265
Copyright © 2019, Texas Instruments Incorporated

IMPORTANT NOTICE AND DISCLAIMER

TI PROVIDES TECHNICAL AND RELIABILITY DATA (INCLUDING DATA SHEETS), DESIGN RESOURCES (INCLUDING REFERENCE DESIGNS), APPLICATION OR OTHER DESIGN ADVICE, WEB TOOLS, SAFETY INFORMATION, AND OTHER RESOURCES "AS IS" AND WITH ALL FAULTS, AND DISCLAIMS ALL WARRANTIES, EXPRESS AND IMPLIED, INCLUDING WITHOUT LIMITATION ANY IMPLIED WARRANTIES OF MERCHANTABILITY, FITNESS FOR A PARTICULAR PURPOSE OR NON-INFRINGEMENT OF THIRD PARTY INTELLECTUAL PROPERTY RIGHTS.

These resources are intended for skilled developers designing with TI products. You are solely responsible for (1) selecting the appropriate TI products for your application, (2) designing, validating and testing your application, and (3) ensuring your application meets applicable standards, and any other safety, security, regulatory or other requirements.

These resources are subject to change without notice. TI grants you permission to use these resources only for development of an application that uses the TI products described in the resource. Other reproduction and display of these resources is prohibited. No license is granted to any other TI intellectual property right or to any third party intellectual property right. TI disclaims responsibility for, and you will fully indemnify TI and its representatives against, any claims, damages, costs, losses, and liabilities arising out of your use of these resources.

TI's products are provided subject to [TI's Terms of Sale](#) or other applicable terms available either on [ti.com](#) or provided in conjunction with such TI products. TI's provision of these resources does not expand or otherwise alter TI's applicable warranties or warranty disclaimers for TI products.

TI objects to and rejects any additional or different terms you may have proposed.

Mailing Address: Texas Instruments, Post Office Box 655303, Dallas, Texas 75265
Copyright © 2022, Texas Instruments Incorporated