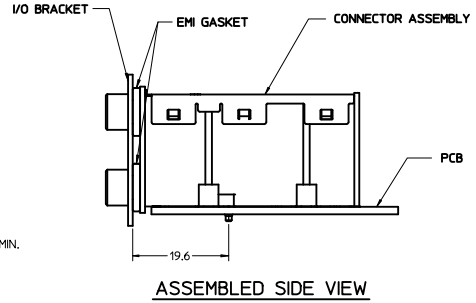
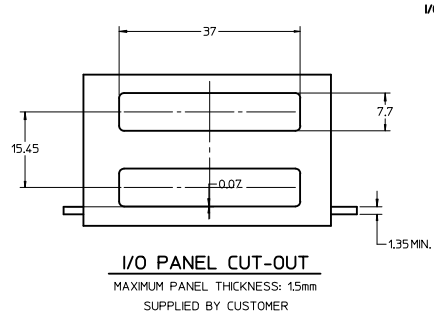
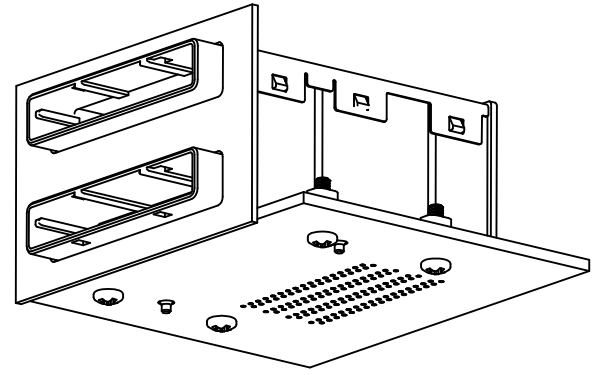
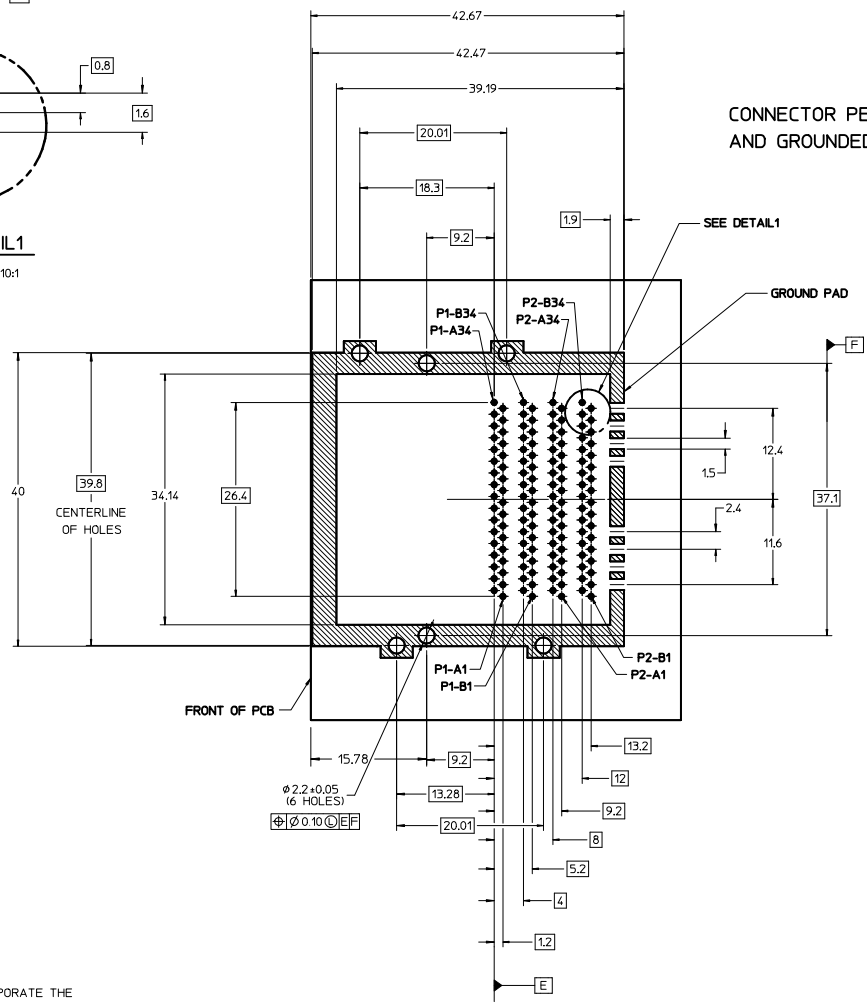
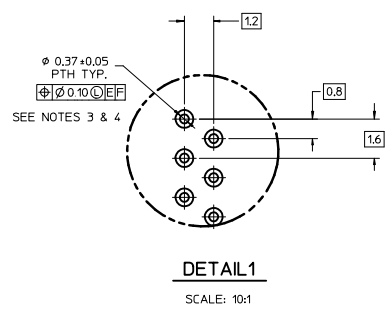


NOTES:

- MATERIAL:
CONNECTOR HOUSING - HIGH TEMPERATURE THERMOPLASTIC
GLASS-FILLED, UL 94V-0,
COLOR: BLACK
EMI HOUSING - DIE CAST ALLOY, NICKEL PLATED FINISH
COVER - STAINLESS STEEL ALLOY
EMI GASKET - CONDUCTIVE POLYMER
- TERMINAL PLATING:
CONTACT AREA - 0.764mm MIN. GOLD OVER 2.544mm MIN. NICKEL.
COMPLIANT TAIL AREA - 0.76-1.524mm TIN/LEAD (90/10) OVER 2.544mm MIN. NICKEL.
TIN: 0.76-1.524mm MIN. MATTE TIN OVER 0.76-1.524mm NICKEL
- PACKAGING SPECIFICATION: TRAY PACK IN CARTON PER PK-75758-9001.
- REFER TO PS-75586-001 PRODUCT SPEC FOR ALL ELECTRICAL, MECHANICAL AND ENVIRONMENTAL SPECIFICATIONS.
- CONNECTOR DESIGNED TO MATE WITH MOLEX CABLE SERIES 74579.
- MOUNTING HARDWARE REQUIRED: M2x8mm CAP SCREWS (4) OR EQUIVALENT, NOT SUPPLIED
MAX. TORQUE .26 N-m/2.3 lbf.-in.

MATERIAL	PLATING
757580303	TIN/LEAD
757580305	TIN

ADDING TIN VERSION EC NO. UCP2011-2783 DRAWN: GONZALEZ01 2011/03/30 CHKD: JANTELZ10 2011/03/30 APPR: MBANK1S 2011/04/14	QUALITY SYMBOLS	GENERAL TOLERANCES (UNLESS SPECIFIED)	DIMENSION STYLE	SCALE	DESIGN UNITS	THIRD ANGLE PROJECTION															
	$\nabla=0$ $\nabla=0$	<table border="1"> <tr> <th></th> <th>mm</th> <th>INCH</th> </tr> <tr> <td>4 PLACES</td> <td>±---</td> <td>±---</td> </tr> <tr> <td>3 PLACES</td> <td>±---</td> <td>±---</td> </tr> <tr> <td>2 PLACES</td> <td>±0.25</td> <td>±---</td> </tr> <tr> <td>1 PLACE</td> <td>±0.25</td> <td>±---</td> </tr> </table>		mm	INCH	4 PLACES	±---	±---	3 PLACES	±---	±---	2 PLACES	±0.25	±---	1 PLACE	±0.25	±---	MM ONLY	2:1	METRIC	
		mm	INCH																		
	4 PLACES	±---	±---																		
3 PLACES	±---	±---																			
2 PLACES	±0.25	±---																			
1 PLACE	±0.25	±---																			
DESCRIPTION	DRAFT WHERE APPLICABLE MUST REMAIN WITHIN DIMENSIONS	<table border="1"> <tr> <td>DRAWN BY</td> <td>DATE</td> </tr> <tr> <td>SBG1EL</td> <td>11/18/2008</td> </tr> <tr> <td>CHECKED BY</td> <td>DATE</td> </tr> <tr> <td>KLANG</td> <td>11/18/2008</td> </tr> <tr> <td>APPROVED BY</td> <td>DATE</td> </tr> <tr> <td>MBANK1S</td> <td>11/19/2008</td> </tr> </table>	DRAWN BY	DATE	SBG1EL	11/18/2008	CHECKED BY	DATE	KLANG	11/18/2008	APPROVED BY	DATE	MBANK1S	11/19/2008	TITLE		ASSEMBLY I-PASS, 8X STACKED STANDARD KEY				
DRAWN BY	DATE																				
SBG1EL	11/18/2008																				
CHECKED BY	DATE																				
KLANG	11/18/2008																				
APPROVED BY	DATE																				
MBANK1S	11/19/2008																				
MATERIAL NO. SEE CHART	DOCUMENT NO. SD-75758-303	SHEET NO. 1 OF 2	MOLEX INCORPORATED																		



- NOTES:
1. FLAT ROCK TOOLING MUST INCORPORATE THE CONNECTOR PERIMETER DURING SEATING OPERATION.
 2. PLATE GROUND PAD WITH EMERSON SILVER OR GOLD.
 3. RECOMMENDED DRILL SIZE FOR FINISHED 0.37 ϕ PTH HOLES IS 0.457 ϕ .
 4. RECOMMENDED ANNULAR RING AROUND FINISHED 0.37 ϕ PTH HOLES IS 0.73 ϕ .

RECOMMENDED PCB LAYOUT
PCB THICKNESS = 1.57mm NOMINAL (1.35mm MIN.)

SEE SHEET 1 IEC NO. UCP2011-2783 DRAWN: GONZALEZ01 2011/03/30 CHKD: JANTELZ10 2011/03/30 APPR: MBANKIS 2011/04/14	QUALITY SYMBOLS	GENERAL TOLERANCES (UNLESS SPECIFIED)	DIMENSION STYLE	SCALE	DESIGN UNITS	THIRD ANGLE PROJECTION
	▽=0 ▽=0	mm INCH 4 PLACES ± --- ± --- 3 PLACES ± --- ± --- 2 PLACES ± 0.25 ± --- 1 PLACE ± 0.25 ± --- ANGULAR ± 1/2°	MM ONLY	2:1	METRIC	TITLE ASSEMBLY I-PASS, 8X STACKED STANDARD KEY
	DRAFT WHERE APPLICABLE MUST REMAIN WITHIN DIMENSIONS	DRAWN BY SBOGIEL 11/18/2008 CHECKED BY DATE KLANG 11/18/2008 APPROVED BY DATE MBANKIS 11/19/2008	MATERIAL NO. SEE SHEET 1	DOCUMENT NO. SD-75758-303	MOLEX INCORPORATED	SHEET NO. 2 OF 2
		THIS DRAWING CONTAINS INFORMATION THAT IS PROPRIETARY TO MOLEX INCORPORATED AND SHOULD NOT BE USED WITHOUT WRITTEN PERMISSION				