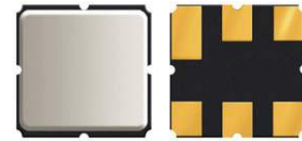


SMD 915.0MHz SAW FILTER

AFS915.0W03-TS3



RoHS
Compliant



3.8 x 3.8 x 1.5mm

FEATURES:

- 3.8 x 3.8 x 1.5mm SMD package
- Low pass band insertion loss 3.3dB
- Input/output 50ohm terminated
- Low amplitude ripple 1.5dB

APPLICATIONS:

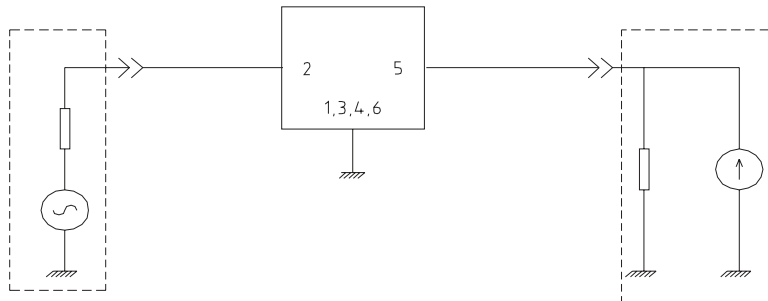
- CDMA450
- RF SAW filter for Telecommunication
- PDA
- Remote controller

STANDARD SPECIFICATIONS:

ABRACON P/N: **AFS915.0W03-TS3**
 Operating temperature: **0°C to +70°C**
 Storage temperature: **-40°C to +85°C**
 DC Permissive Voltage : **10 Vdc max.**
 Maximum Input Power : **10 dBm**

Item	Frequency	Specification
Center Frequency (f_0)	915.0 MHz	
Passband Width	± 13.0 MHz	
Insertion Loss	902~928	3.3 dB max.
Amplitude Ripple	902~928	1.5 dB max.
Relative Attenuation	10.0~700.0	50 dB min.
	700.0~845.0	45 dB min.
	845.0~880.0	35 dB min.
	947.0~992.0	15 dB min.
	992.0~1020.0	35 dB min.
Temperature Coefficient of Frequency		-30ppm/k
Terminating Impedance		50 Ω /0nF.

TEST CIRCUIT:



FREQUENCY CHARACTERISTICS

