

# Customer Information Sheet

DRAWING No.: S1411-XXR

SHEET 2 OF 2

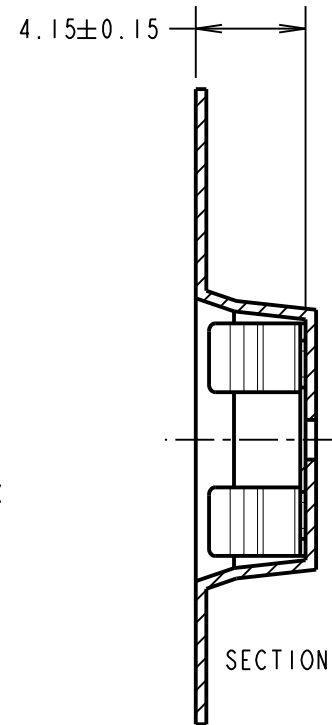
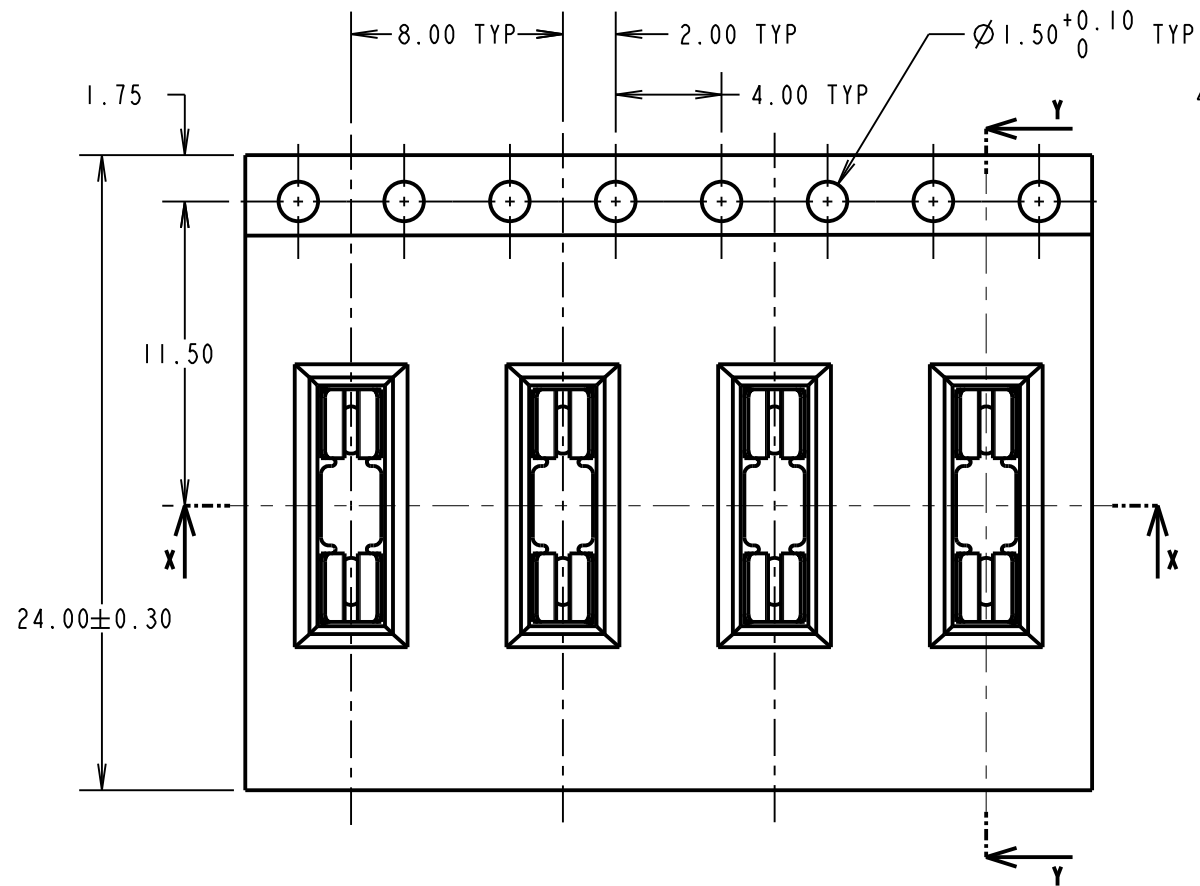
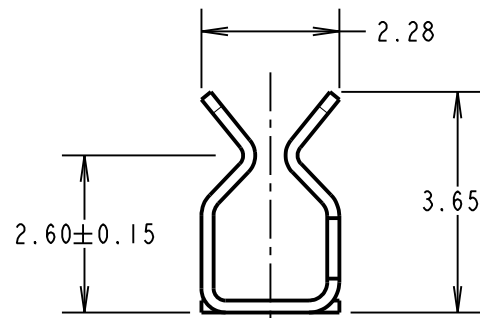
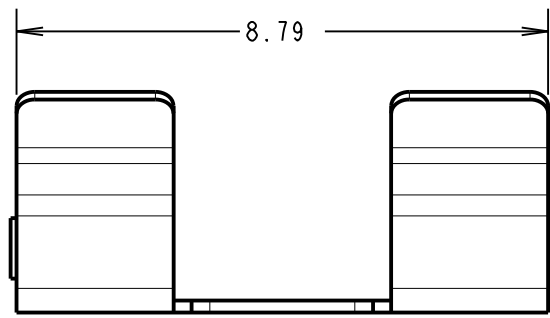
IF IN DOUBT - ASK

©

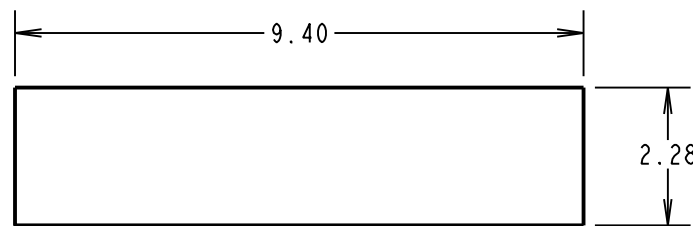
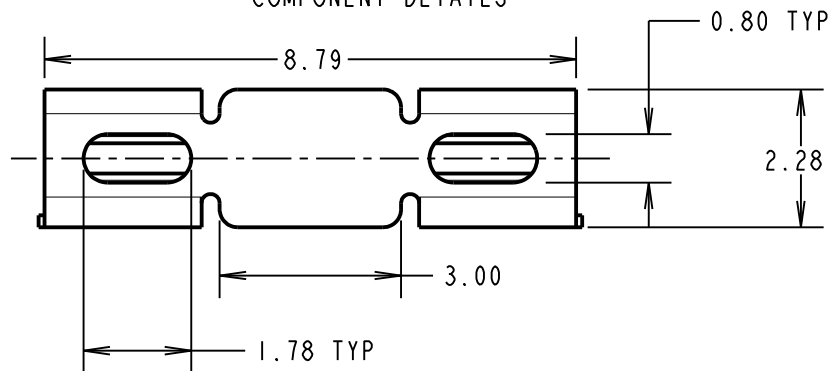
NOT TO SCALE

THIRD ANGLE PROJECTION

ALL DIMENSIONS IN mm

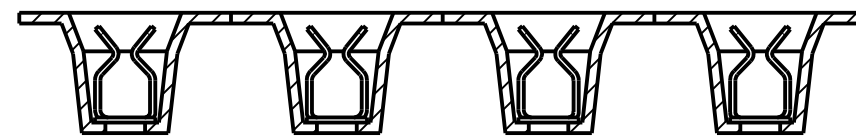
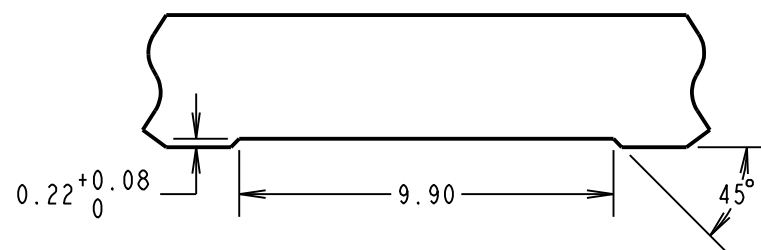


COMPONENT DETAILS



RECOMMENDED PAD LAYOUT

RECOMMENDED SHIELD CAN CUT OUT



SECTION X-X

ORDER CODE:

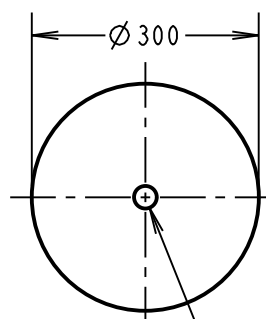
**S1411-XXR**

FINISH:   
~~06 = TIN/LEAD~~   
 46 = TIN

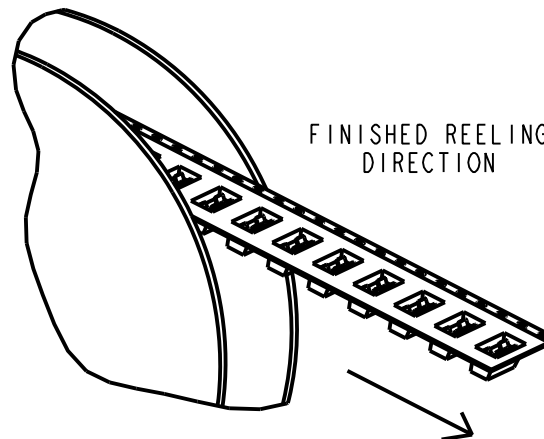
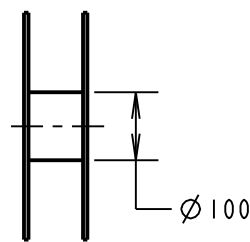
**OBSELETE**

COMPONENT SPECIFICATION:  
 MATERIAL = BERYLLIUM COPPER  
 FINISH:  
~~06 = 3μ 90/10 TIN/LEAD~~  
 46 = 3μ 100% TIN

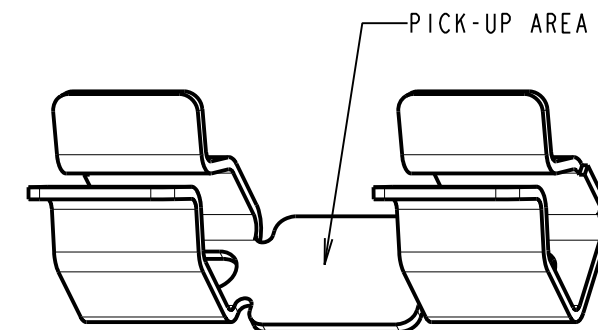
PERFORMANCE SPECIFICATIONS:  
 INSERTION FORCE (AFTER CONDITIONING):  
 0.7mm SHIELD = 4.5N MAX  
 1.0mm SHIELD = 7N MAX  
 WITHDRAWAL FORCE:  
 0.7mm SHIELD = 0.8N MIN  
 1.0mm SHIELD = 1.5N MIN  
 DURABILITY = 20 INSERTIONS MINIMUM  
 CONTACT RESISTANCE = 20mΩ MAX  
 SHIELD THICKNESS = 0.7-1.0mm



REEL DETAILS



FINISHED REELING DIRECTION



PICK-UP AREA

SB	5	18.08.16	13115
NAME	ISS.	DATE	C/NOTE
APPROVED: S.BENNETT			
CHECKED: M.PERREN			
DRAWN: M. PLESTED			
CUSTOMER REF.:			
ASSEMBLY DRG:			

NOTES:

1. QUANTITY PER REEL = 1,900.
2. THIS PRODUCT IS TAPED AND REELED IN ACCORDANCE WITH EIA-481 (ELECTRONIC INDUSTRIES ASSOCIATION).
3. ALL SPECIFICATIONS SUBJECT TO VERIFICATION.

**HARWIN**

www.harwin.com  
 technical@harwin.com

THIS DRAWING AND ANY INFORMATION OR DESCRIPTIVE MATTER SET OUT HEREON ARE CONFIDENTIAL AND COPYRIGHT PROPERTY OF THE HARWIN GROUP AND MUST NOT BE DISCLOSED, LOANED, COPIED OR USED FOR MANUFACTURING, TENDERING OR FOR ANY OTHER PURPOSE WITHOUT THEIR WRITTEN PERMISSION.

TOLERANCES

X. = ±1mm  
 X.X = ±0.50mm  
 X.XX = ±0.10mm  
 X.XXX = ±0.01mm  
 ANGLES = ±5°  
 UNLESS STATED

MATERIAL:

SEE ABOVE

FINISH:

SEE ABOVE

S/AREA:

mm<sup>2</sup>

TITLE:

SMT RFI SHIELD CLIP  
 IN TAPE AND REEL

DRAWING NUMBER:

**S1411-XXR**

SHT 2 OF 2