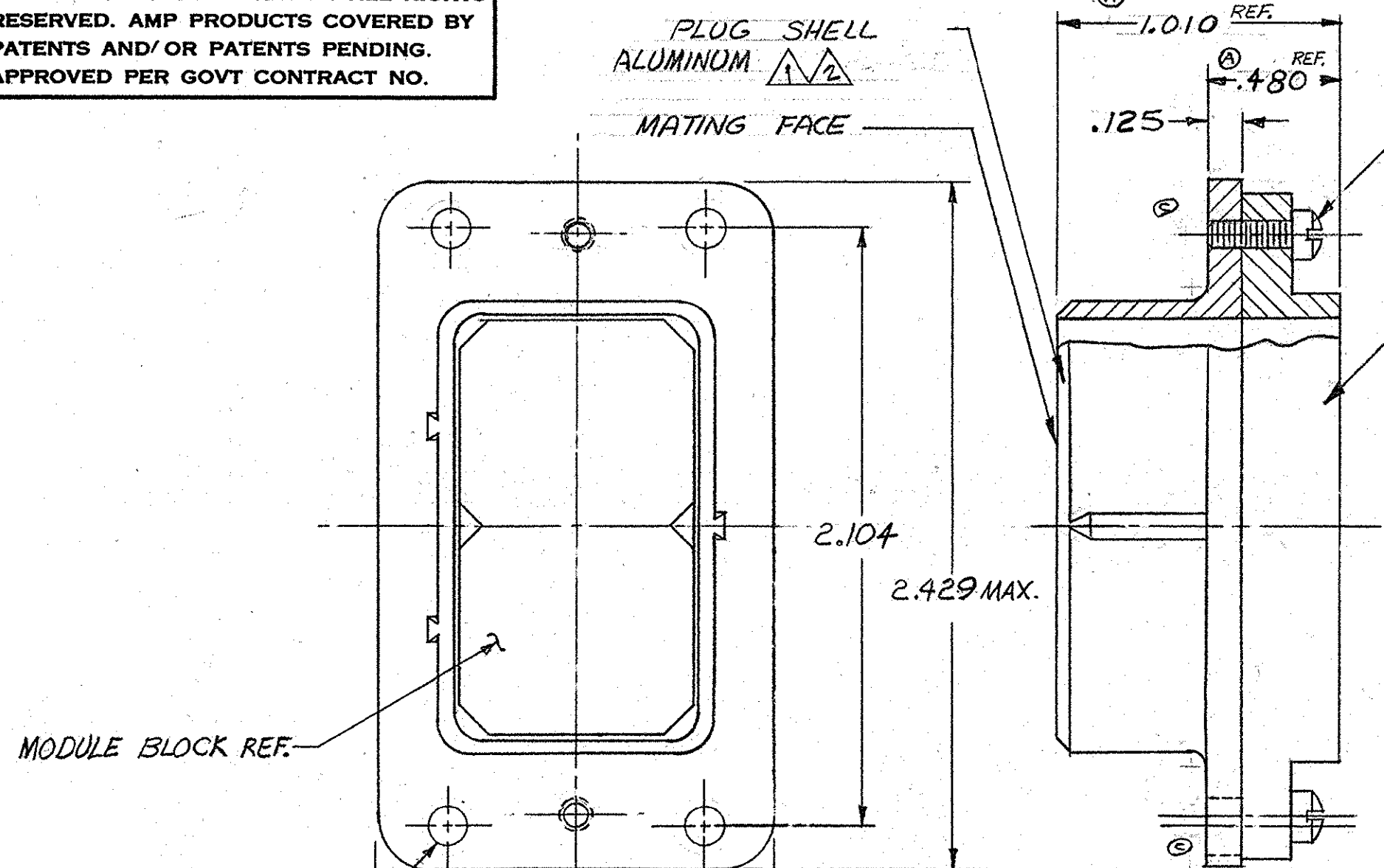


© 1965 BY AMP INCORPORATED. ALL RIGHTS RESERVED. AMP PRODUCTS COVERED BY PATENTS AND/OR PATENTS PENDING. APPROVED PER GOVT CONTRACT NO.

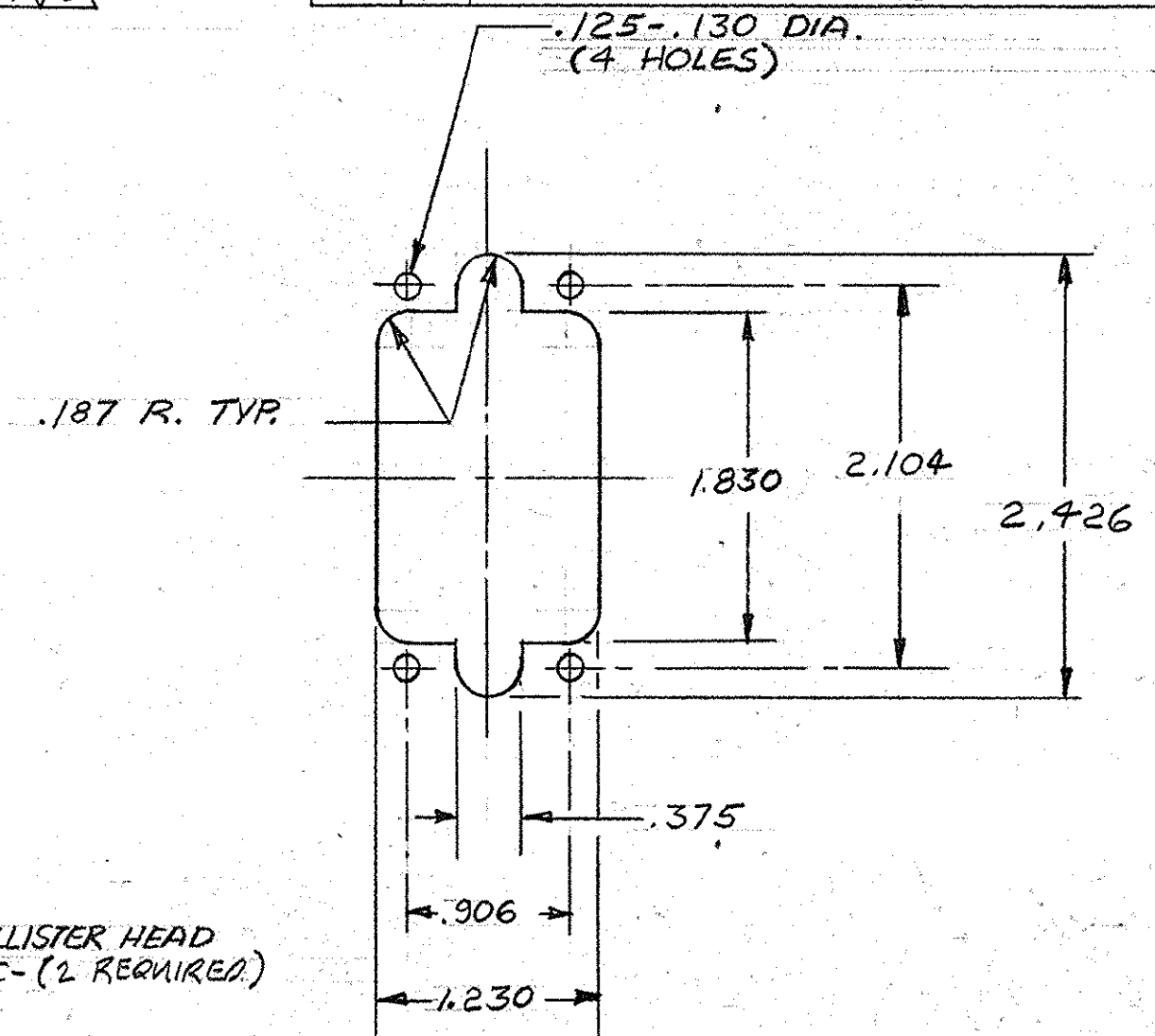
REVISIONS				
ZONE	LTR	DESCRIPTION	DATE	APPROVED
A		REVISED	W-777, W-765	10-14-5 M.S. J.H.
B		REVISED	Y-68	1-19-6 M.S. J.H.
C		REVISED SCREW LENGTH PER ECN	Z-15	4/5/67 J.W. B.M.
D		REV. PER ECN D-644	CL	10-6-75 J.W.
E		REV. / ECN H-220	SLX	8-14-80 J.W.
F		REV. / ECN R-2305		7-30-86 MPH J.M.I.
G		REV PER ELO-05-001A12		05/05 AD/DE
H		REV PER ECO-05-005359		11/05 PY/DE



202789-1 FOR SOCKETS  
5-202789-1 FOR SOCKETS

.125/.130 DIA.  
(4 HOLES)

MODULE BLOCK REF.



PANEL CUTOUT  
SCALE: 1-1

PLUG SHELL  
ALUMINUM

MATING FACE

SCREW FILLISTER HEAD  
#4-40 UNC - (2 REQUIRED)

RETAINER  
ALUMINUM

- ① ZINC PLATE PER ASTM-B-633 CLASS 3, TYPE II COLORLESS SUPPLEMENTARY CHROMATE.
- ② ELECTROLESS NICKEL PLATE PER SAE-AMS-C-26074 .000 ADD-.000800 THK (NO INTENTIONAL ADDITIONS OF LEAD OR CADMIUM PER SPE STD 230-700).
- ③ ZINC PLATED COLD ROLLED. ④ PASSIVATED STAINLESS STEEL.

202789-2 FOR PINS  
5-202789-2 FOR PINS

②	④	5-202789-2
②	④	5-202789-1
①	③	202789-2
①	③	202789-1

SUPERSEDED BY 5-202789-2

SUPERSEDED BY 5-202789-1

AMP INFO		QTY REQD	NOMENCLATURE OR DESCRIPTION	PART OR IDENTIFYING NO
LOC	PRINT DIST			
R	39/H			
LIST OF MATERIALS OR PARTS LIST				
UNLESS OTHERWISE SPECIFIED DIMENSIONS ARE IN INCHES TOLERANCES ON		CONTRACT NO		AMP INCORPORATED HARRISBURG, PENNSYLVANIA
FRACTIONS ±	DECIMALS ±	ANGLES ±	DR E. Benninger	
±	±	±	DATE 8-30-65	
MATERIAL		CHK J. St. Heide		AMP TRADEMARK
		DATE 9/2/65		
HEAT TREAT		DSGN ENGR J. Williams		PLUG ASSEMBLY, MODULE SERIES "G", (2 BLOCK)
		DATE 7-2-65		
FINISH		APPD F. B. Miller, Jr.		SIZE C
		DATE 9-2-65		
		DSGN APPD		CODE IDENT NO 00779
		OTHER APPD		NUMBER 202789
				SCALE 2-1
				WT CALC
				ACTUAL
				SHEET