

Printed-circuit board connector - MC 1,5/ 9-G-3,81 P26 THR - 1722053

Please be informed that the data shown in this PDF Document is generated from our Online Catalog. Please find the complete data in the user's documentation. Our General Terms of Use for Downloads are valid (<http://phoenixcontact.com/download>)

Header, Nominal current: 8 A, Number of positions: 9, Pitch: 3.81 mm, Color: black, Contact surface: Tin, Assembly: SMD/THT/THR



Product Features

- Low-profile THR headers with a compact pitch
- Plug-in direction parallel to the PCB
- Pitch: 3.81 mm
- Use in SMT reflow processes



Key commercial data

Packing unit	1 pc
Minimum order quantity	50 pc
Weight per Piece (excluding packing)	3.6 GRM
Custom tariff number	85366990
Country of origin	Germany

Technical data

Dimensions

Length	9.2 mm
Height	9.5 mm
Width	35.68 mm
Pitch	3.81 mm
Dimension a	30.48 mm
Hole diameter	1.4 mm

General

Range of articles	MC 1,5/...-G-THR
Rated voltage (III/3)	160 V

Printed-circuit board connector - MC 1,5/ 9-G-3,81 P26 THR - 1722053

Technical data

General

Connection in acc. with standard	EN-VDE
Nominal current I _N	8 A
Inflammability class according to UL 94	V0
Color	black
Number of positions	9

Classifications

eCl@ss

eCl@ss 4.0	272607xx
eCl@ss 4.1	27260701
eCl@ss 5.0	27260701
eCl@ss 5.1	27260701
eCl@ss 6.0	27260704
eCl@ss 7.0	27440402
eCl@ss 8.0	27440402

ETIM

ETIM 3.0	EC001121
ETIM 4.0	EC002637
ETIM 5.0	EC002637

UNSPSC

UNSPSC 6.01	30211810
UNSPSC 7.0901	39121409
UNSPSC 11	39121409
UNSPSC 12.01	39121409
UNSPSC 13.2	39121409

Approvals

Approvals

Approvals

UL Recognized / cUL Recognized / GOST / GOST / cULus Recognized

Ex Approvals

Printed-circuit board connector - MC 1,5/ 9-G-3,81 P26 THR - 1722053

Approvals

Approvals submitted

Approval details

UL Recognized		
	B	D
Nominal current I _N	8 A	8 A
Nominal voltage U _N	300 V	300 V

cUL Recognized		
	B	D
Nominal current I _N	8 A	8 A
Nominal voltage U _N	300 V	300 V

GOST		
------	--	--

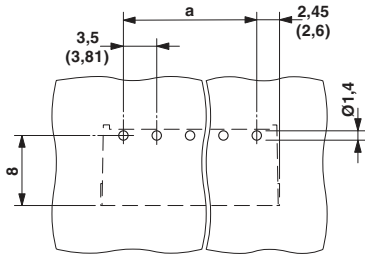
GOST		
------	--	--

cULus Recognized		
------------------	--	--

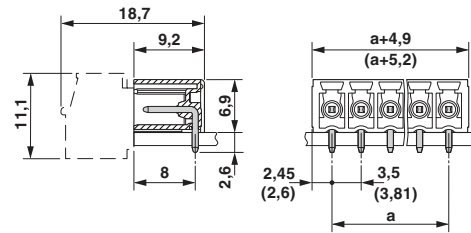
Drawings

Printed-circuit board connector - MC 1,5/ 9-G-3,81 P26 THR - 1722053

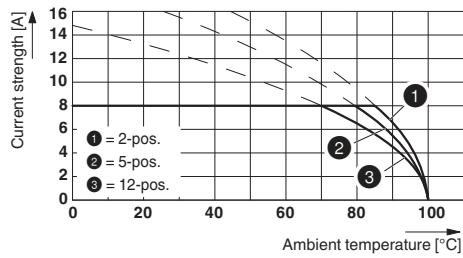
Drilling diagram



Dimensioned drawing



Diagram



Type: FK-MCP 1,5/...-ST-3,81 with MC 1,5/...-G-3,81 P26 THR