

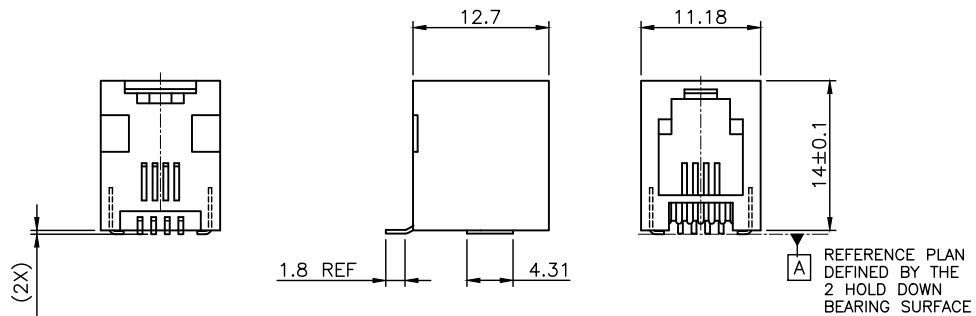
PRODUCT NUMBER
73327-XXXLF

PLATING OPTION
1= GXT 0.76 μ m
3= GOLD 0.76 μ m
5= GOLD 1.27 μ m

PACKAGE OPTION
1= TAPE ON REEL
2= TUBE
3= TAPE ON REEL IN PLASTIC BAG

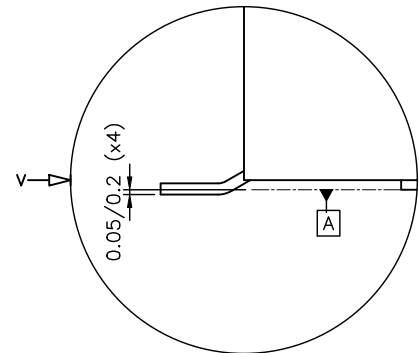
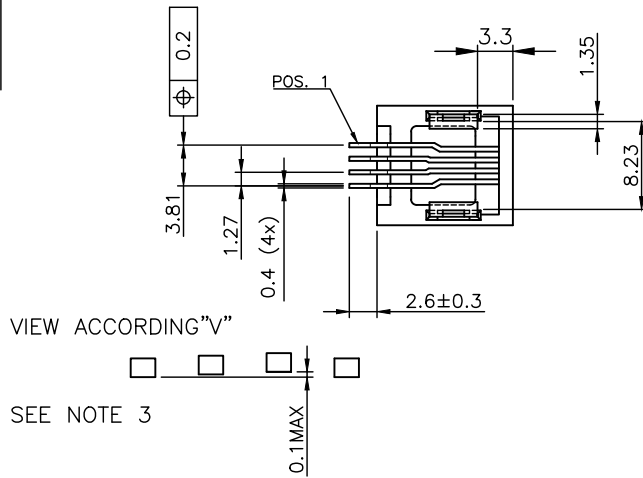
TERMINAL LOADING
1= FULLY LOADED

WHEN NEEDED, SUFFIX LETTER "LF"
INDICATES THE PRODUCT IS RoHS
COMPATIBLE, SEE NOTE 4.



NOTES:

- 1 - MATERIAL: HOUSING: HIGH TEMP. PCT, COLOUR BLACK.
TERMINAL: PHOSPHOR BRONZE.
- 2 - PLATING: CONTACT AREA: SEE TABLE.
SOLDER TAIL : 90/10 SnPb 2 μ m MIN.
WHEN SUFFIX "LF" IS REQUIRED, 2 μ m MIN MATTE
TIN OVER 1.27 MIN Ni IS SUPPLIED INSTEAD OF SnPb.
NO RAW EDGES EXCEPT SOLDER TAIL TIPS
- 3 - SOLDER TAILS COPLANARITY : 0.1 mm
- 4 - RoHS COMPATIBLE PRODUCT SPECIFICATIONS
 - a - PLATING:
 - "LF" MEANS THE PRODUCT IS LEAD-FREE,
2 μ m MINIMUM MATTE TIN OVER 1.27 μ m
MINIMUM NICKEL UNDERPLATE.
 - b - MANUFACTURING PROCESS COMPATIBILITY
 - THE HOUSING WILL WITHSTAND EXPOSURE TO
245°C PEAK TEMPERATURE FOR 30 SECONDS
MAX IN A CONVECTION, INFRA-RED OR VAPOR
PHASE OR REFLOW OVEN.
 - c - LABELING:
 - MEETS PACKAGING SPECS AS PER GS-14-920
 - d - LEGAL STATEMENT: SEE GS-47-0004
- 5 - PACKAGING FOR OPTION 3 : EACH REEL IS WRAPPED INTO A PLASTIC BAG
TO PROTECT FROM MOISTURE DURING STACKING TIME.

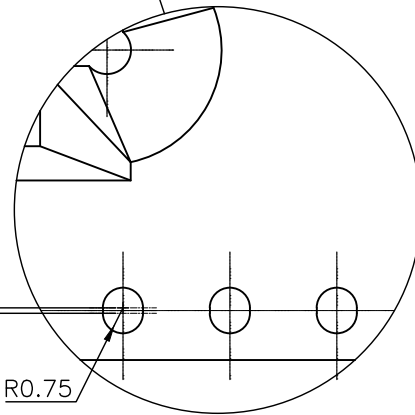
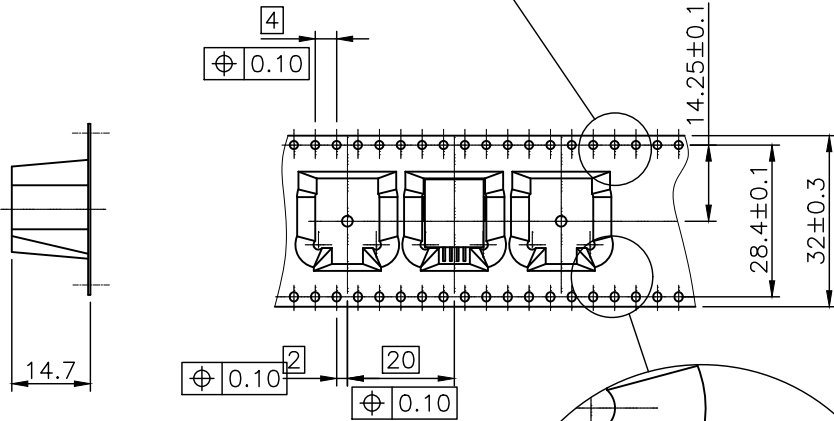
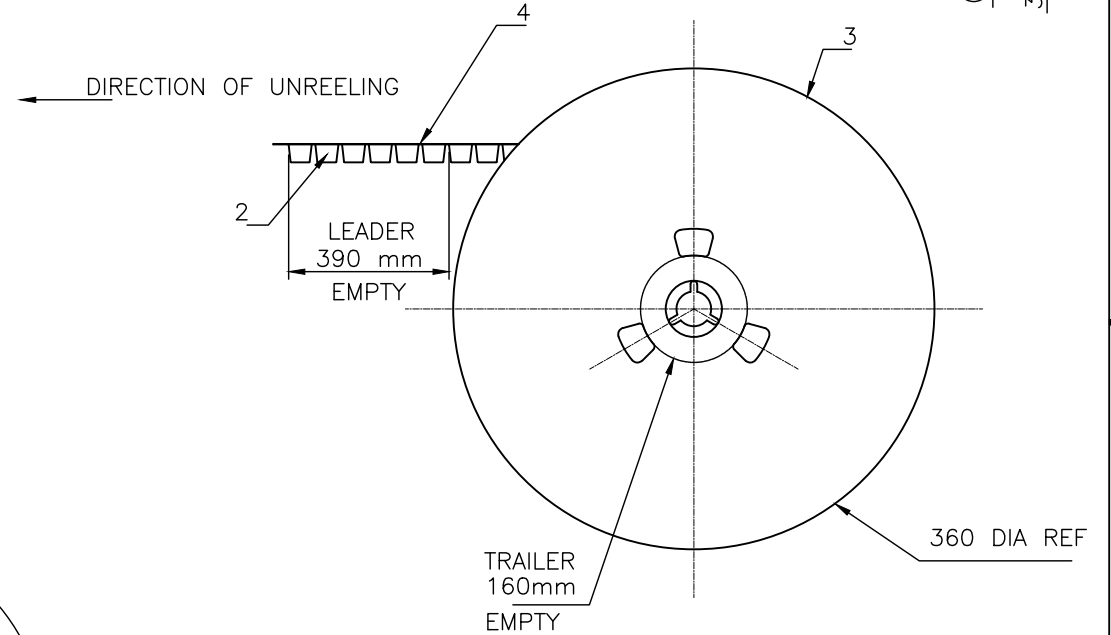
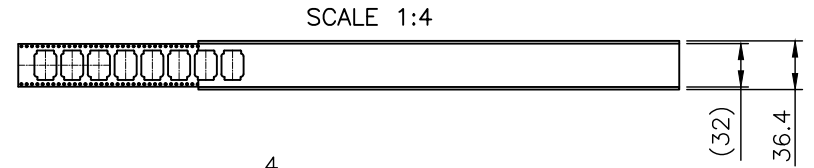
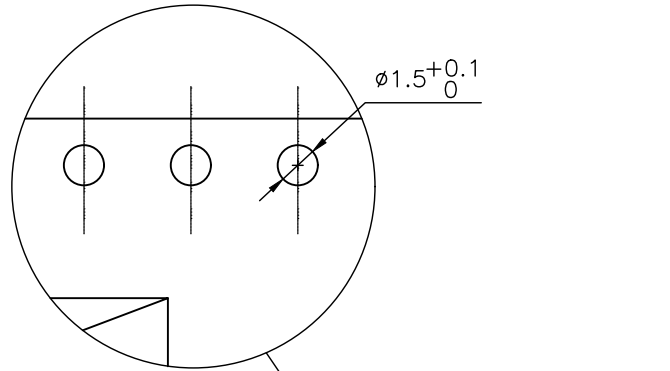


CUSTOMER COPY FOR REFERENCE ONLY

mat'l. code		surface ISO 1302 <input checked="" type="checkbox"/> ISO 406 ISO 1101		tolerance ISO 406 ISO 1101		projection 		product family MOD JACK	
ltr		ecn no		dr		date		title	
H		F05-0247		DLE		05.09.12		SMT RA JACK 4 POS NARROW INSIDE	
J		F06-0240		DLE		06.07.18			
K		F09-0070		LSA		02.07.21			
L		B-15798		JFA		13.09.09			
M		F-21888		AMA		15.09.09		dwg no	
N		F-45278		DDE		22.07.05		sheet 1 of 3	
								size	
								73327	
								A3	
								type	
								CUSTOMER Drawing	
sheet		revision		N		F		B	
index		sheet		1		2		3	

PRODUCT NUMBER
SEE SHEET 1

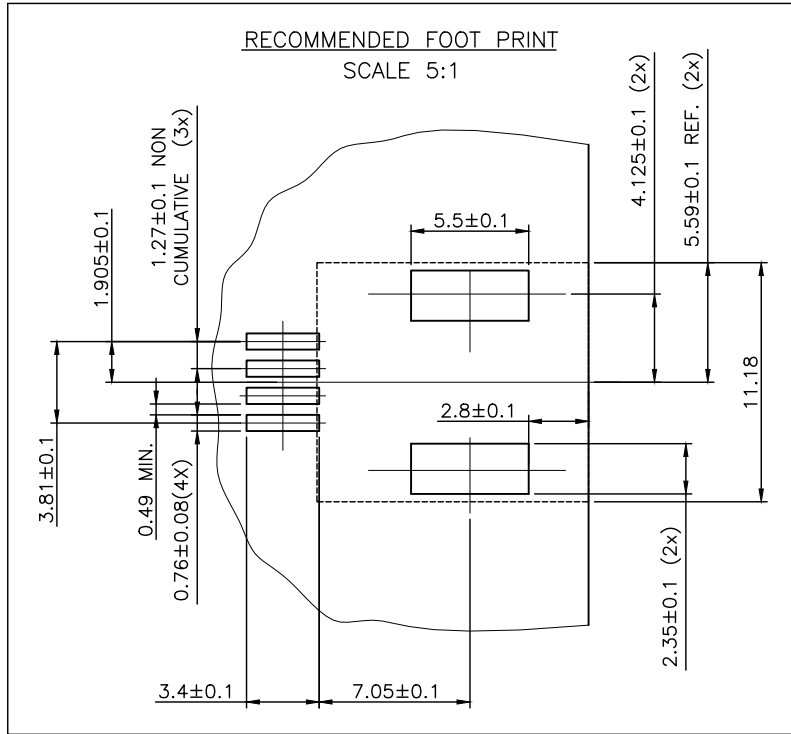
LTR	PART NAME	QTY
1	PRODUCT	280
2	TAPE	1
3	REEL	1
4	COVER TAPE	1



1- IN ACCORDANCE WITH EIA-481 AND IEC 296-3

CUSTOMER COPY FOR REFERENCE ONLY

mat'l. code		surface ISO 1302 <input checked="" type="checkbox"/>		tolerance ISO 406 <input checked="" type="checkbox"/> ISO 1101		projection 		product family MOD-JACK	
ltr		ecn no		dr		date		title	
E		F90120		DLE		99.02.01		SMT RA JACK	
F		F06-024G		DLE		06.07.18		4 POS. NARROW INSIDE	
				angles		linear		scale 1:1	
				dr		D LEGRAND		06.07.18	
				enr		P NIZZI		06.07.18	
				chr		D LE		06.07.18	
				app		P NZ		06.07.18	
sheet index		revision sheet						dwg no	
								73327	
								sheet 2 of 3	
								size A3	
								type CUSTOMER Drawing	



A
B
C

A
B
C

CUSTOMER COPY FOR REFERENCE ONLY

mat'l. code		surface	tolerance	projection	product family	
		ISO 1302 <input checked="" type="checkbox"/>	ISO 406 ISO 1101		MOD JACK	
ltr	ecn no	dr	date	tolerances unless otherwise specified	title	
A	F04-0363	DLE	04.10.18	±0.13	SMT RA JACK 4 POS NARROW INSIDE	
B	F06-0240	DLE	06.07.18	linear		
		angles		mm	scale 2:1	
		±2°				
dr	D LEGRAND		04.10.18		dwg no	
engr	P NIZZI		04.10.18		sheet 3 of - size	
chr	D LEGRAND		04.10.18		73327	A4
appd	P NZ		04.10.18		type	CUSTOMER Drawing
sheet index	revision sheet					

D