

Data sheet

Order No.: 1110639

Type: LPC 2,5/11-STF-5,08

PCB connector, Lever Push-in connection



The figure shows an 10-position version

1 Main features



- | | | | |
|---------------------------|--------------------------|------------------------|---------------------|
| • No. of pos. | 11 | • Nominal current | 16 A |
| • Conductor cross section | 2.5 mm ² | • Nominal voltage | 320 V |
| • Color | green (6021) | • Connection direction | 0 ° |
| • Pitch | 5.08 mm | • Type of packaging | packed in cardboard |
| • Connection method | Lever Push-in connection | | |

2 Your advantages

- ✓ Tool-free lever principle enables time-saving connection and release of conductors with/without ferrules
- ✓ Clear lever positions provide reliable feedback on opened or closed clamping spaces
- ✓ Time-saving push-in connection when lever is closed
- ✓ Screwable flange for superior mechanical stability
- ✓ Quick and convenient testing using integrated test option



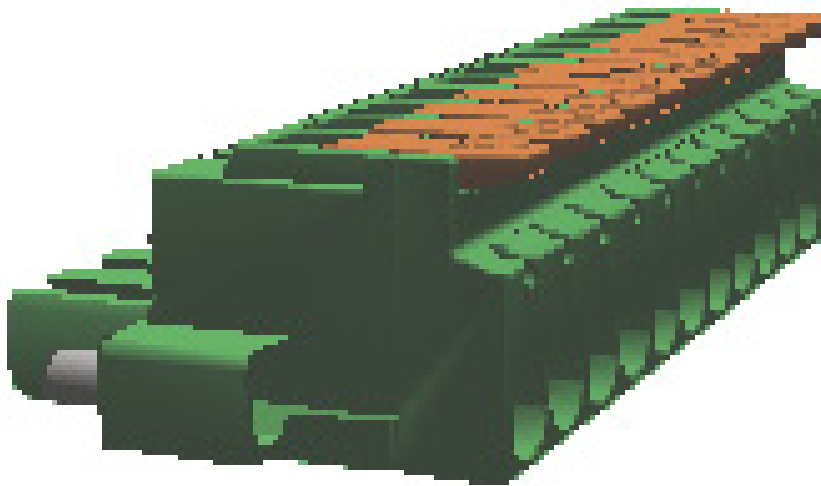
Make sure you always use the latest documentation.

It can be downloaded at: phoenixcontact.net/product/1110639

1110639 LPC 2,5/11-STF-5,08**3 Table of contents**

| | | |
|----|---|----|
| 1 | Main features..... | 1 |
| 2 | Your advantages | 1 |
| 3 | Table of contents | 2 |
| 4 | 3D model in PDF can be activated (Acrobat Reader only)..... | 3 |
| 5 | General Technical Data | 4 |
| 6 | Mounting..... | 5 |
| 7 | Conductor connection | 6 |
| 8 | Material properties..... | 7 |
| 9 | Dimensions..... | 8 |
| 10 | Series drawing..... | 9 |
| 11 | Product notes | 10 |
| 12 | Packaging information | 10 |
| 13 | Application..... | 10 |
| 14 | General tests | 11 |
| 15 | Mechanical tests..... | 11 |
| 16 | Insertion and withdrawal forces | 13 |
| 17 | Electrical tests | 14 |
| 18 | Current carrying capacity/derating curves | 15 |
| 19 | Environmental and durability tests | 16 |
| 20 | Classification for connectors..... | 16 |
| 21 | Commercial Data..... | 17 |
| 22 | Accessories..... | 17 |
| 23 | Combination tests..... | 18 |

4 3D model in PDF can be activated (Acrobat Reader only)



1110639 LPC 2,5/11-STF-5,08**5 General Technical Data****5.1 item properties**

| | |
|--|--------------------------|
| Order No. | 1110639 |
| Type | LPC 2,5/11-STF-5,08 |
| Connector system | CLASSIC COMBICON |
| Product type | PCB connector |
| Type of contact | Female connector |
| Range of articles | LPC 2,5/...-ST-LR |
| Pitch | 5.08 mm |
| Number of positions | 11 |
| Number of levels | 1 |
| Connection method | Lever Push-in connection |
| Connection direction of the conductor to plug-in direction | 0 ° |

1110639 LPC 2,5/11-STF-5,08**6 Mounting****6.1 Flange mounting**

| | |
|-----------------|---------------|
| Type of locking | Screw locking |
| Mounting flange | Screw flange |
| Torque | 0.3 Nm |

1110639 LPC 2,5/11-STF-5,08**7 Conductor connection****7.1 Connection capacity**

| | |
|--|---|
| Nominal cross section | 2.5 mm ² |
| Conductor cross section, rigid | 0.2 mm ² ... 2.5 mm ² |
| Conductor cross section, flexible | 0.2 mm ² ... 2.5 mm ² |
| Conductor cross section flexible, with ferrule without plastic sleeve | 0.25 mm ² ... 2.5 mm ² (Stripping length: 7 mm ... 12 mm) |
| Conductor cross section flexible, with ferrule with plastic sleeve | 0.25 mm ² ... 2.5 mm ² (Stripping length: 7 mm ... 12 mm) |
| 2 conductors with the same cross section flexible with TWIN ferrule and plastic sleeve | 0.5 mm ² ... 1 mm ² (Stripping length: 7 mm ... 12 mm) |
| Cylindrical gauge a x b / diameter | 2.8 mm x 2.0 mm / 2.4 mm |
| Stripping length | 10 mm |

7.2 Connection capacity AWG

| | |
|-----------------------------|-----------|
| Conductor cross section AWG | 26 ... 12 |
|-----------------------------|-----------|

1110639 LPC 2,5/11-STF-5,08**8 Material properties****8.1 Material of metal parts**

| | |
|-------------------------|---|
| Note | WEEE/RoHS-compliant, whisker-free acc. to IEC 60068-2-82/JEDEC JESD 201 |
| Contact material | Cu alloy |
| Terminal point surface | Tin (4 - 8 µm Sn) |
| Surface contact area | Tin (4 - 8 µm Sn) |
| Surface characteristics | hot-dip tin-plated |

8.2 Material of plastic parts

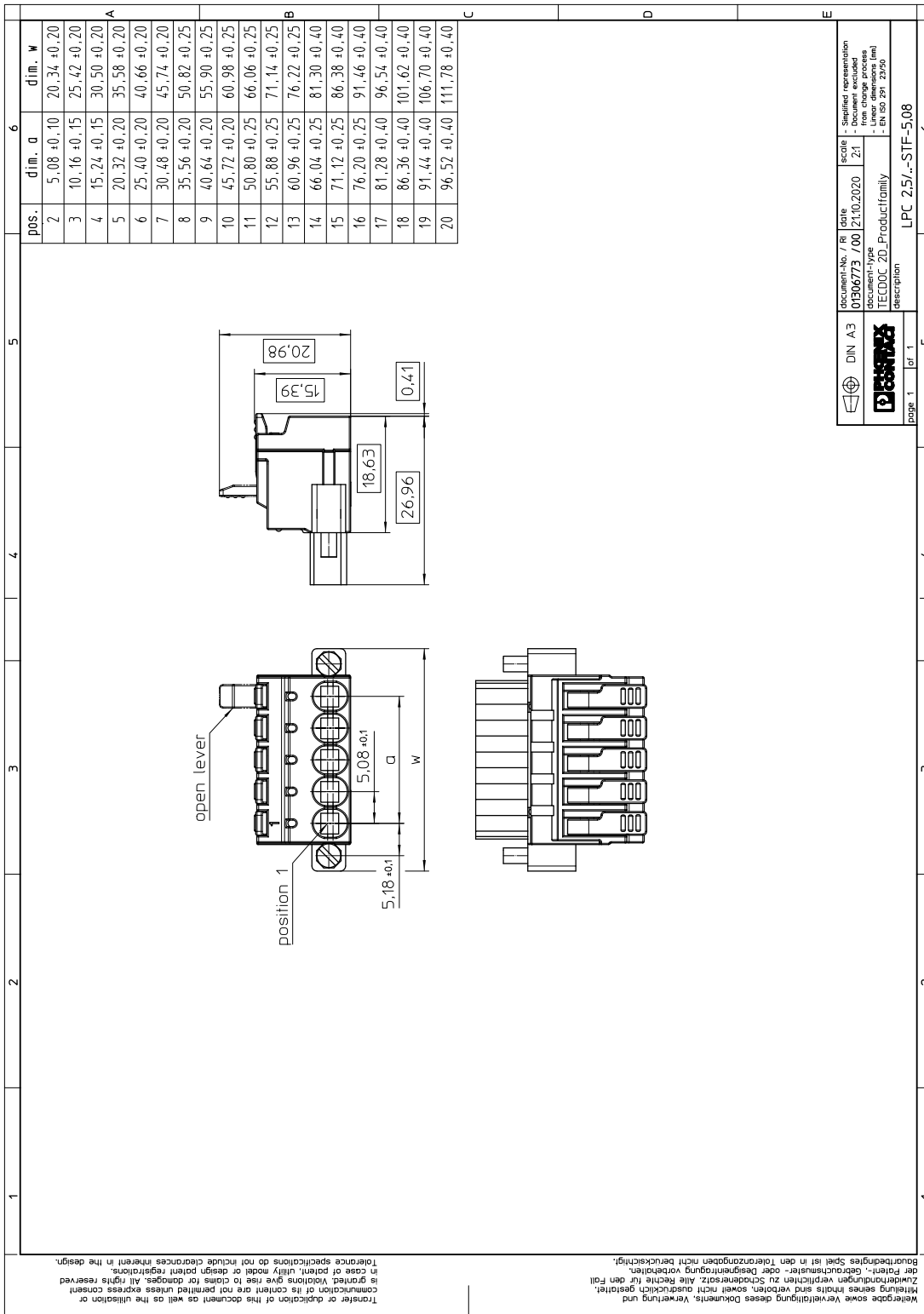
| | Housing | Actuation element |
|---|--------------|-------------------|
| Color | green (6021) | orange (2003) |
| Insulating material | PA | PA GF |
| Insulating material group | I | I |
| CTI according to IEC 60112 | 600 | 600 |
| Flammability rating according to UL 94 | V0 | V0 |
| Glow wire flammability index GWFI according to EN 60695-2-12 | 850 | |
| Glow wire ignition temperature GWIT according to EN 60695-2-13 | 775 | |
| Temperature for the ball pressure test according to EN 60695-10-2 | 125 °C | |

1110639 LPC 2,5/11-STF-5,08**9 Dimensions****9.1 Dimensions for the product**

| | |
|--------------|----------|
| Length | 27.37 mm |
| Width | 66.06 mm |
| Total height | 15.39 mm |

1110639 LPC 2,5/11-STF-5,08

10 Series drawing



Transfer or duplication of this document as well as the utilisation or communication of its content are not permitted unless express consent is granted. Violations give rise to claims for damages. All rights reserved in case of patent, utility model or design patent registrations. Tolerance specifications do not include clearances inherent in the design.

Weitergabe sowie Vervielfältigung dieses Dokuments, Verwertung und Mitteilung seines Inhalts sind verboten, soweit nicht ausdrücklich gestattet. Zuwahlungen verpflichten zu Schadenersatz. Alle Rechte für den Fall der Patent-, Gebrauchsmuster- oder Designregistrationsverletzungen vorbehalten. Bauraumtoleranzen sind in den Toleranzangaben nicht berücksichtigt.

DIN A3

| | | | |
|-------------------------|------------|-------|-----------------------------|
| document-no. / Ri | date | scale | simplified representation |
| 01306773 / 00 | 21.10.2020 | Z1 | - simplified representation |
| document-type | | | - from change process |
| TECDOC 2D_Productfamily | | | - Linear dimensions (mm) |
| | | | - EN ISO 291: 2950 |
| description | | | |
| LPC 2,5/11-STF-5,08 | | | |

page 1 of 1

1110639 LPC 2,5/11-STF-5,08**11 Product notes****11.1 General information**

| | |
|--------------------|--|
| Notes on operation | In accordance with IEC 61984, COMBICON connectors have no switching power (COC). During designated use, they must not be plugged in or disconnected when carrying voltage or under load. |
|--------------------|--|

12 Packaging information

| | |
|--------------------|---------------------|
| Type of packaging | packed in cardboard |
| Pieces per package | 50 |

13 Application**Ferrules without insulating collar, according to DIN 46228-1**

| | |
|--|--|
| Recommended crimping pliers | 1212034 CRIMPFOX 6 |
| Ferrules without insulating collar, according to DIN 46228-1 | Cross section: 0.25 mm ² ; Length: 7 mm Cross section: 0.34 mm ² ; Length: 7 mm Cross section: 0.5 mm ² ; Length: 8 mm ... 10 mm Cross section: 0.75 mm ² ; Length: 8 mm ... 10 mm Cross section: 1 mm ² ; Length: 8 mm ... 12 mm Cross section: 1.5 mm ² ; Length: 10 mm ... 12 mm Cross section: 2.5 mm ² ; Length: 10 mm ... 12 mm |

Ferrules with insulating collar, according to DIN 46228-4

| | |
|---|--|
| Recommended crimping pliers | 1212034 CRIMPFOX 6 |
| Ferrules with insulating collar, according to DIN 46228-4 | Cross section: 0.25 mm ² ; Length: 8 mm ... 10 mm Cross section: 0.34 mm ² ; Length: 8 mm ... 10 mm Cross section: 0.5 mm ² ; Length: 8 mm ... 10 mm Cross section: 0.75 mm ² ; Length: 10 mm ... 12 mm Cross section: 1 mm ² ; Length: 10 mm ... 12 mm Cross section: 1.5 mm ² ; Length: 10 mm ... 12 mm Cross section: 2.5 mm ² ; Length: 12 mm |

13.1 Temperature limit values

| | |
|---|---|
| Ambient temperature (storage/transport) | -40 °C ... 70 °C |
| Ambient temperature (assembly) | -5 °C ... 100 °C |
| Ambient temperature (operation) | -40 °C ... 105 °C (dependent on the derating curve) |

1110639 LPC 2,5/11-STF-5,08**14 General tests****14.1 Specification**

| | |
|-------------------|---------------------------------|
| Specification | IEC 61984 |
| Specification | IEC 60999-1 |
| Brief description | Printed-circuit board connector |

15 Mechanical tests**15.1 Check for damage to conductor or loosening**

| | |
|---------------|---------------------|
| Result | Test passed |
| Specification | IEC 60999-1:1999-11 |

15.2 Pull-out test

| | |
|--|---|
| Specification | IEC 60999-1:1999-11 |
| Result | Test passed |
| Conductor cross section/conductor type/tractive force actual value | 0.2 mm ² / solid / > 10 N |
| Conductor cross section/conductor type/tractive force actual value | 0.2 mm ² / flexible / > 10 N |
| Conductor cross section/conductor type/tractive force actual value | 2.5 mm ² / solid / > 50 N |
| Conductor cross section/conductor type/tractive force actual value | 2.5 mm ² / flexible / > 50 N |

15.3 Repeated connection and disconnection

| | |
|---------------|---------------------|
| Specification | IEC 60999-1:1999-11 |
| Result | Test passed |

15.4 Conductor connection

| | |
|---------------|---------------------|
| Specification | IEC 60999-1:1999-11 |
| Result | Test passed |

15.5 Visual examination

| | |
|--------------------|-----------------------|
| Specification | IEC 61984:2008-10 |
| Visual examination | Test passed |
| Specification | IEC 60512-1-1:2002-02 |

15.6 Dimensional test

| | |
|------------------|-----------------------|
| Dimensional test | Test passed |
| Specification | IEC 60512-1-2:2002-02 |

15.7 Resistance of marking

1110639 LPC 2,5/11-STF-5,08

Resistance of marking

Test passed

Specification

IEC 60068-2-70:1995-12

15.8 Polarization and coding

Polarization when inserted
Requirement >20 N

Test passed

Specification

IEC 60512-13-5:2006-02

1110639 LPC 2,5/11-STF-5,08**16 Insertion and withdrawal forces**

| Insertion and withdrawal force | |
|-------------------------------------|-------------|
| Specification | Test passed |
| No. of cycles | 25 |
| Insertion strength per pos. approx. | 8 N |
| Withdraw strength per pos. approx. | 6 N |

1110639 LPC 2,5/11-STF-5,08**17 Electrical tests**

| | |
|---|----------------------------|
| Rated current / conductor cross section | 16 A / 2.5 mm ² |
| Rated insulation voltage (III/2) | 320 V |
| Rated surge voltage (III/2) | 4 kV |
| Contact resistance | 2 mΩ |
| Degree of pollution | 2 |

17.1 Air and creepage distances

| | | | |
|---|---------------------|-------|--------|
| Component | PCB connector | | |
| Specification | IEC 60664-1:2007-04 | | |
| Mains type | unearthed mains | | |
| Insulating material group | I | | |
| Comparative tracking index (IEC 60112:2003-01) | CTI 600 | | |
| Rated insulation voltage | 250 V | 320 V | 630 V |
| Rated surge voltage | 4 kV | 4 kV | 4 kV |
| Degree of pollution | 3 | 2 | 2 |
| Overvoltage category | III | III | II |
| Minimum clearance case A (inhomogeneous field) | 3 mm | 3 mm | 3 mm |
| Minimum value of the creepage path requirement in acc. with table | 3.2 mm | 3 mm | 3.2 mm |

17.2 Electrical function

| | |
|--------------------------------------|---|
| Specification | IEC 60999-1:1999-11 |
| Result | Test passed |
| Voltage drop | Voltage drop (U) after the load ≤ 15 mV |
| Test current (minimum cross section) | 3 A AC |
| Test current (maximum cross section) | 16 A AC |
| Conductor cross section, flexible | 0.2 mm ² ... 2.5 mm ² |
| Conductor cross section, rigid | 0.2 mm ² ... 2.5 mm ² |

17.3 Temperature cycles

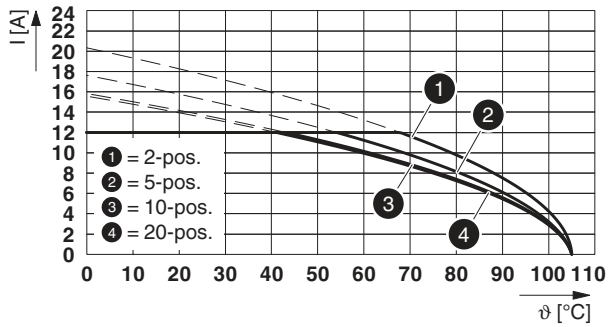
| | |
|--------------------------------------|--|
| Specification | IEC 60999-1:1999-11 |
| Result | Test passed |
| Voltage drop | Voltage drop (U) after the load ≤ 22.5 mV or 1.5 x U _{after 24 h} The small value is to be used. |
| Test current (minimum cross section) | 3 A AC |
| Test current (maximum cross section) | 16 A AC |
| Temperature cycles | 192 |
| Conductor cross section, flexible | 0.2 mm ² ... 2.5 mm ² |
| Conductor cross section, rigid | 0.2 mm ² ... 2.5 mm ² |

1110639 LPC 2,5/11-STF-5,08

18 Current carrying capacity/derating curves

| | |
|-------------------------|---|
| Specification | IEC 61984:2008-10 |
| Note | Representation based on IEC 60512-5-2:2002-02 |
| Note | For number of positions, see diagram |
| Reduction factor | 0.8 |
| Conductor cross section | 2.5 mm ² |

Type: LPC 2,5/...-STF-5,08 with MSTBV 2,5/...-GF-5,08



1110639 LPC 2,5/11-STF-5,08**19 Environmental and durability tests****19.1 Vibration test**

| | |
|------------------------|-------------------------------------|
| Specification | IEC 60068-2-6:2007-12 |
| Result | Test passed |
| Frequency | 10 - 150 - 10 Hz |
| Sweep speed | 1 octave/min |
| Amplitude | 0.35 mm (10 - 60.1 Hz) |
| Acceleration | 50 m/s ² (60.1 - 150 Hz) |
| Test duration per axis | 2.5 h |
| Test directions | X-, Y- and Z-axis |
| Note | |

19.2 Railway application, vibration test

| | |
|-----------------|---|
| Specification | IEC 61373:2010-05 |
| Result | Test passed |
| Testing | Vibration, broadband noise |
| Frequency | 5 - 150 Hz |
| Test directions | X-, Y- and Z-axis (pos. and neg.) |
| Spectrum | Service life test category 1, class B, body mounted |
| | |

19.3 Shock test

| | |
|--------------------------------|-----------------------------------|
| Specification | IEC 60068-2-27:2008-02 |
| Result | Test passed |
| Pulse shape | Semi-sinusoidal |
| Peak acceleration | 200 m/s ² |
| Shock duration | 11 ms |
| Number of shocks per direction | 3 |
| Test directions | X-, Y- and Z-axis (pos. and neg.) |

20 Classification for connectors

| | |
|-----------------------------------|--|
| Specification | IEC 61984:2008-10 |
| Main features | Connectors without switching capacity (COC) |
| Construction form | Fixed connectors |
| Strain relief elements | without strain relief |
| Connection method | Can be reconnected |
| Protection against electric shock | Not encapsulated - touch-proof when inserted |
| Protective conductor | without PE |
| Lock | no |
| Connection method | Screwless terminal points |

1110639 LPC 2,5/11-STF-5,08**21 Commercial Data**

| | |
|--------------------|--|
| Order No. | 1110639 |
| Type | LPC 2,5/11-STF-5,08 |
| Pieces per package | 50 |
| Net weight | 2.22 g |
| GTIN | 4063151027759 |
| | Information that applies locally, see link on page 1 |
| | Information that applies locally, see link on page 1 |

22 Accessories

| Description | Order No. | Type |
|--|-----------|-------------|
| Coding profile, is inserted into the slot on the plug or inverted header, red insulating material | 1734634 | CP-MSTB |
| Actuation tool, for ST terminal blocks, insulated, also suitable for use as a bladed screwdriver, size: 0.6 x 3.5 x 100 mm, 2-component grip, with non-slip grip | 1205053 | SZS 0,6X3,5 |

1110639 LPC 2,5/11-STF-5,08

23 Combination tests

**LPC 2,5/11-STF-LR**

IEC 61984

Mechanical tests (A)

Insertion/withdrawal force per position

Polarization when inserted
Requirement >20 NContact holder in insert
Requirements >20 N**Durability tests (B)**Contact resistance R₁ 1st levelContact resistance R₁ 2nd level

Insertion/withdrawal cycles

Contact resistance R₂Rated impulse voltage at sea level
Voltage waveform ≥ (1.2/50 μs)Power-frequency withstand voltage
Voltage waveform ≥ (50/60 Hz)**Thermal tests (C)**

Tested number of positions

Tested conductor cross section

Test current

Upper limiting temperature
Requirements < 100°C**Climatic tests (D)**

Test sequence 1: low temperature storage

Test sequence 2: heat storage

Test sequence 3: noxious gas storage
(ISO 6988)Rated impulse voltage at sea level
Voltage waveform ≥ (1.2/50 μs)Power-frequency withstand voltage
Voltage waveform ≥ (50/60 Hz)**Environmental and endurance tests (E)**

Specification

Degree of protection

MSTBV 2,5/11-GF

IEC 61984

approx. 8 N / 6 N

Test passed

Test passed

2 mΩ

25

2.2 mΩ

4.8 kV

2.21 kV

20

2.5 mm²

12 A

Test passed

-40 °C/2 h

105 °C/168 h

0.2 dm³ SO₂ on 300 dm³/
40 °C/1 cycle

4.8 kV

2.21 kV

IEC 61984:2008-10

Finger safety with IP20
test finger