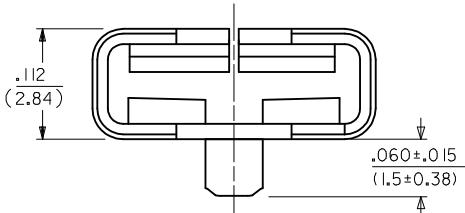
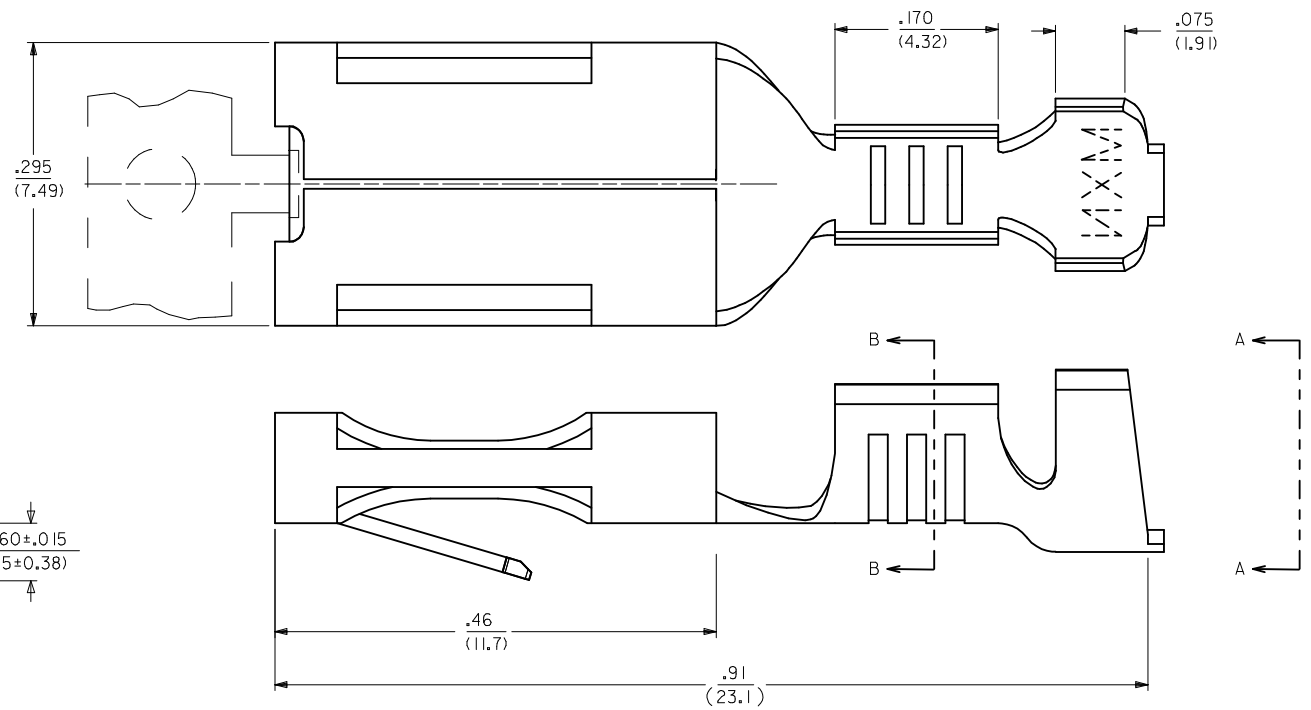


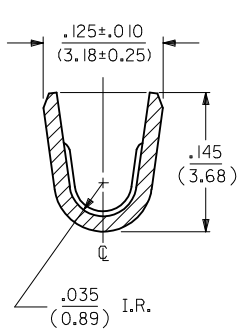
ITEM NO.	ENG. NO.
41422-5001	41422-5001

**NOTES:**

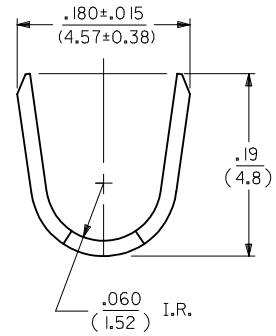
1. MATERIAL: BRASS, ALLOY \*C26000, TEMPER SPRING, .016/(.04) THICK
2. FINISH: ES-88-P901, HOT TIN DIP .00002/(0.0005) MIN.
3. PRODUCT SPECIFICATION: NONE
4. IN ANY HOUSING DESIGN USING THIS TERMINAL, ESPECIALLY WHEN LOW INSERTION FORCES ARE EXPECTED, SOME SORT OF LOCKING DEVICE SHOULD BE CONSIDERED.
5. MATES TO .250/(6.35) X .032/(0.8) NOMINAL MALE TAB TERMINAL.
6. CRIMP TO #14 THROUGH #18 AWG. WIRE WITH .031/(0.79) THK. INSULATION.



CRIMP SECTION NOT SHOWN IN THIS VIEW FOR CLARITY.



**SECTION B-B**



**VIEW A-A**

<b>FIX BLOCK TOLERANCE</b> EC NO: UCP2013-0551 DRW: AELHAG CHKD: JELL APPR: FSMITH 2012/06/12 06/12/2012 2012/08/15	QUALITY SYMBOLS	GENERAL TOLERANCES (UNLESS SPECIFIED)	DIMENSION STYLE	SCALE	DESIGN UNITS	THIRD ANGLE PROJECTION
	▽=0	mm INCH	IN/MM	10:1	INCH	
	▽=0	4 PLACES ± --- ± ---	DRAWN BY DATE	TITLE		
	▽=0	3 PLACES ± --- ± .010	MAB 08/19/94	TERMINAL, PUSH-ON CRIMP		
REV	DESCRIPTION	2 PLACES ± 0.25 ± .014	CHECKED BY DATE	MOLEX INCORPORATED		
		1 PLACE ± 0.35 ± ---	KBP 08/19/94	SD-41422-5***		
		ANGULAR ±1/2°	APPROVED BY DATE	SHEET NO.		
		DRAFT WHERE APPLICABLE MUST REMAIN WITHIN DIMENSIONS	RAS 08/19/94	1 OF 1		
			MATERIAL NO. SEE CHART	THIS DRAWING CONTAINS INFORMATION THAT IS PROPRIETARY TO MOLEX INCORPORATED AND SHOULD NOT BE USED WITHOUT WRITTEN PERMISSION		
			DOCUMENT NO.			