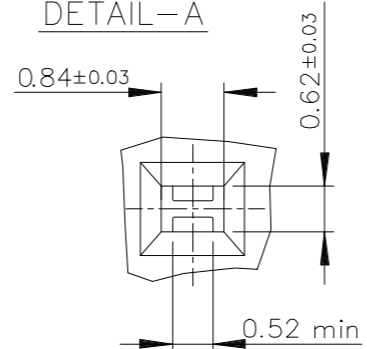
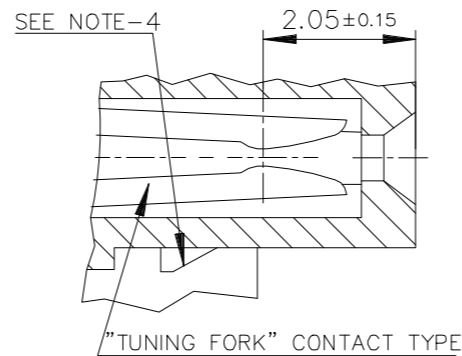


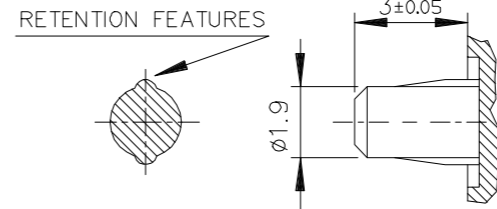
DETAIL-A



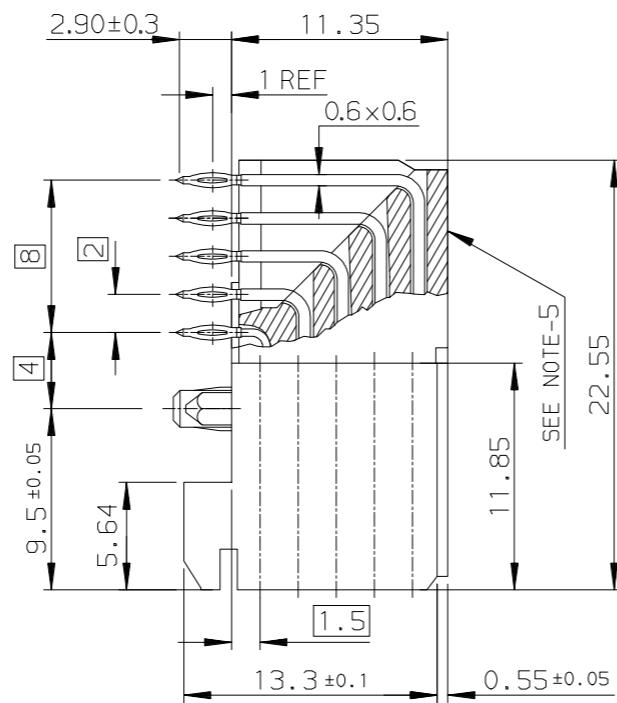
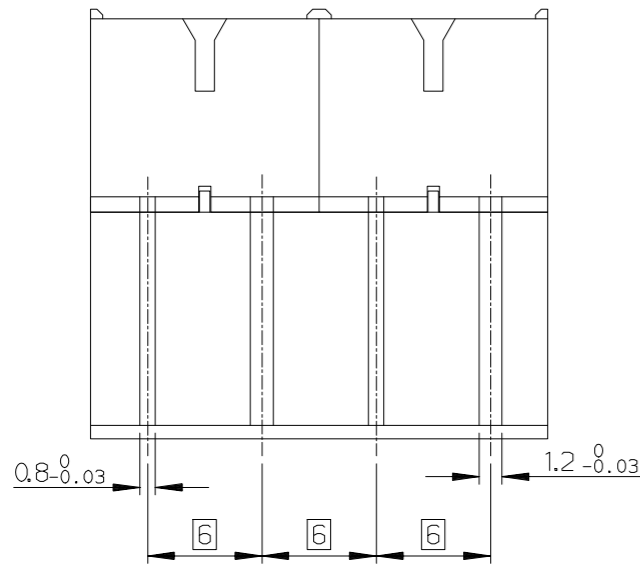
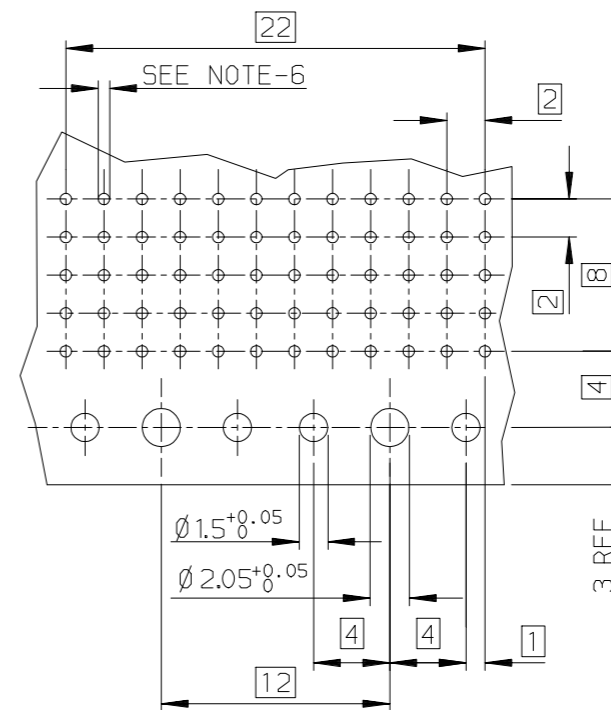
SECTION-FF



DETAIL OF PRESS-IN PEGS



LAYOUT FOR P.C.B



NOTES:

- MATERIAL : BODY : LCP UL94-V0
: CONTACT : COPPER ALLOY.
- FOR PLATING PERFORMANCE REFER DRAWING # 10159409
- CONNECTORS WITH PCB 2.4mm ARE COMPATIBLE WITH WIDE AND NARROW BODIES.
- PLUG FOR CODING KEY FIXING.
- FLAT ROCK INSERTION TOOLING IN PCB, SEE DRW REF : C-8626-1003.
- METALIZED HOLE DEFINITION , SEE GS-12-447.
- STANDARD PACKAGING IS IN TUBE , IF SUFFIX "P" IS ADDED IN P/N PACKAGING IS IN TRAYS
BUT CONNECTOR MARKING IS WITHOUT "P". EXAMPLE : HM1FXXXXXXXXHXPLF, MARKED HM1FXXXXXXXXHXLF
- THIS PRODUCT MEETS EUROPEAN UNION DIRECTIVES AND OTHER
COUNTRY REGULATIONS AS DESCRIBED IN GS-47- 0004
- A△ SYMBOL WILL BE NEXT TO ANY DIMENSION, VIEW, OR NOTE
WHICH HAS BEEN MODIFIED WITH THE CURRENT DRAWING REVISION.

X-PLATING CODE △
REF.DWG. 10159409

PART NUMBER : HM1F52FDP000HXLF

GENERAL CHARACTERISTICS AND ROHS INFORMATIONS:

See PRODUCT SPECIFICATION: GS-12-447

mat'l. code		surface	tolerance	projection	product family
		ISO 1302	ISO 406 ISO 1101		METRAL
		tolerances unless otherwise specified			title
ltr	ecn no	dr	date	MM	METRAL FEMALE 5 ROWS 60 CTS
E	LS05-004	MLE	2005-02-17		RA PRESS-FIT / PRESS-IN PEG
F	LS06-0095	LGO	2006-07-03		
G	LS06-0159	MLE	2006-10-23		
H	LS07-0266	MLE	2007-11-06	scale	
J	ELX-I-38656	MINI	2020-10-12		dwg no
K	ELX-I-42906	NIRMAL	2021-11-12		sheet 1 of 1
sheet index		revision sheet	K		size
1		1			5
					A3
					type
					Product Customer Drawing