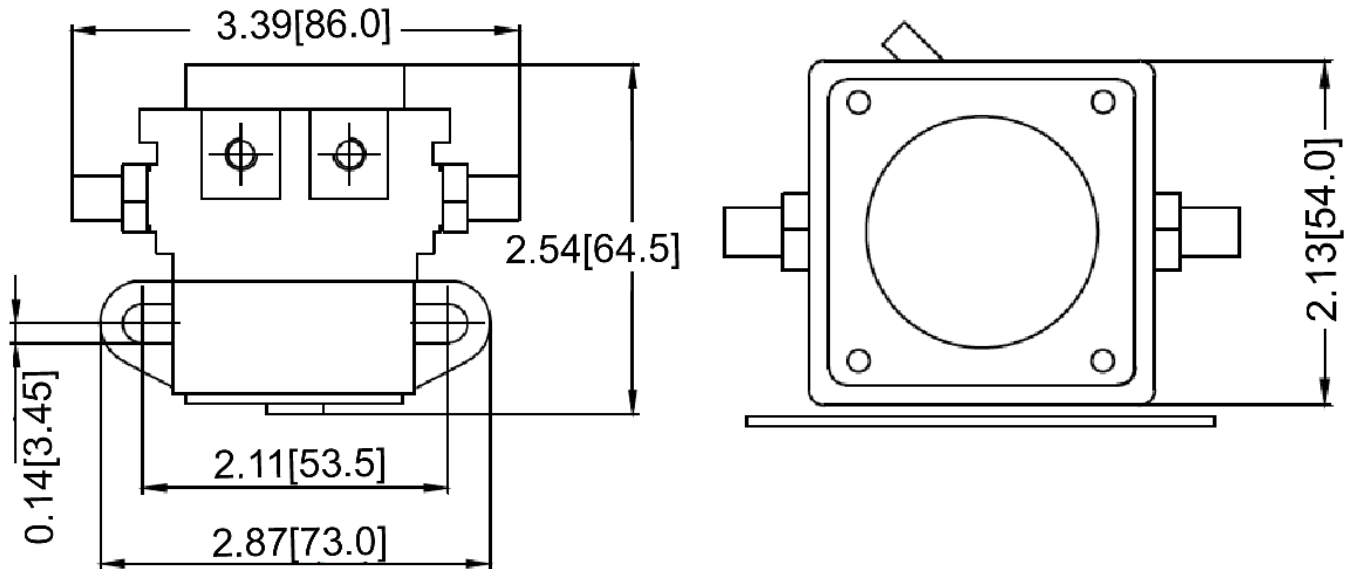


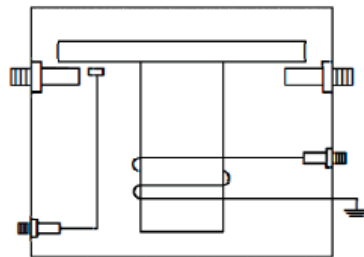
Mechanical Dimensions: Inches [mm]

Tolerances ± 0.012 [0.5] Unless Otherwise Specified



Circuit Diagram

Intermittent Duty. Grounded base



Electrical Specifications

Make and Break Rating	12VDC 200A
Coil Resistance	4 ± 0.5 Ohms
Operating Voltage	<10VDC
Release Voltage	>2.4VDC
Operation Temperature	-40°C~80°C

Material Specifications

Phenolic body	
Copper terminals	
5/16"-18 Thread terminals with lock washers	
Mechanical Life	500,000
Electrical Life	50,000

Rev	Date of issue	Revision Notes	Designed	Approved
B	03-09-2020	Initial Drawing	RC	OF