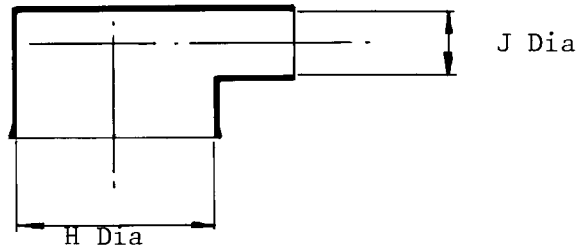


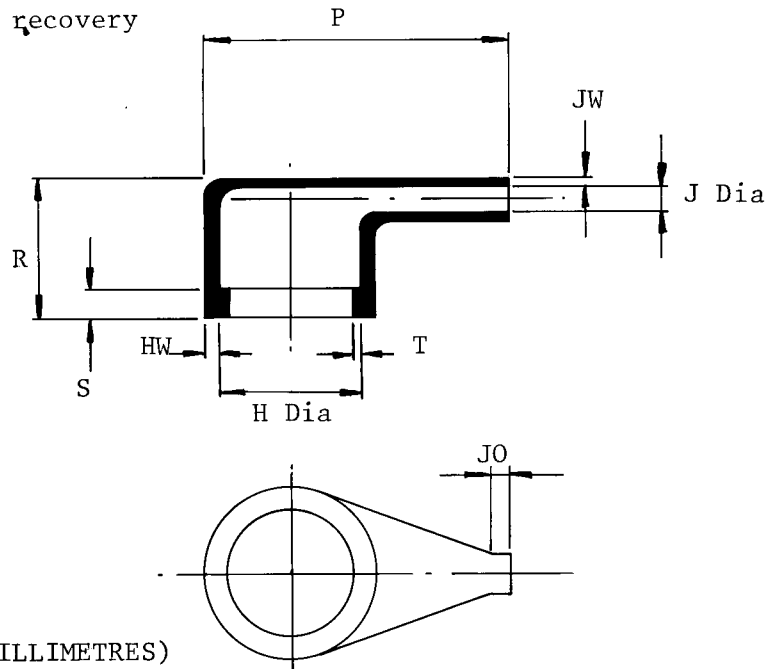
CUSTOMER MODIFIED PART

222D932-X-G01

a. Part as supplied



b. Part after unrestricted recovery



DIMENSIONS (IN MILLIMETRES)

Part Number	H		J		P	R	S	T	JO	HW	JW
	Min a	Max b	Min a	Max b	+10% b	Ref b	Ref b	Ref b	+10% b	+20% b	+20% b
222D932 -X-G01	26	19,1	8,0	2,6	40	18	3,0	1,0	7,0	1,8	1,1

Issued by

*J. Henheit*

Issue

3

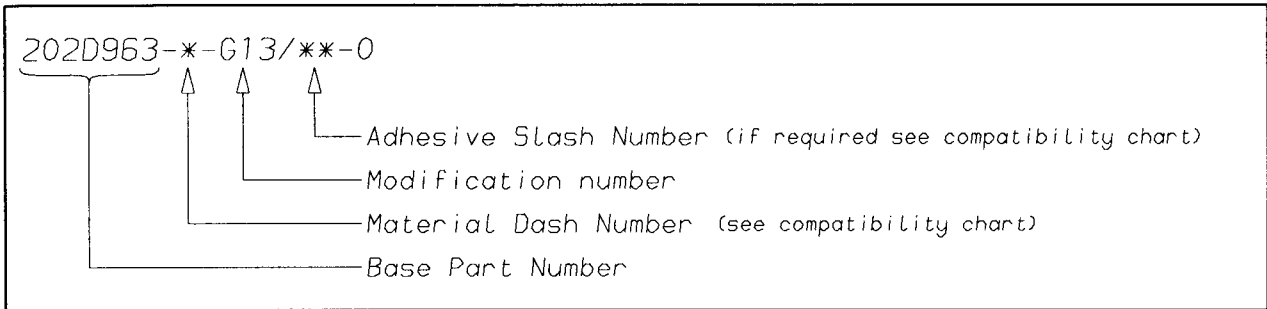
Date

April 1987

Approved by

*S. P. Smyth Roberts*

## Ordering Information



## COMPATIBILITY CHART

MATERIAL DASH NUMBER	MATERIAL DESCRIPTION	COATING SLASH NUMBER
-3	POLYOLEFIN, SEMI-RIGID	/42, /86
-4	POLYOLEFIN, FLEXIBLE	/42, /86
-25	ELASTOMER, FLUID RESISTANT	/86, /225

AS SUPPLIED DIMENSIONS ARE FOR UNCOATED PARTS,  
WHEN COATING IS ADDED, ENTRY DIAMETERS WILL REDUCE BY 1.5mm MAX.