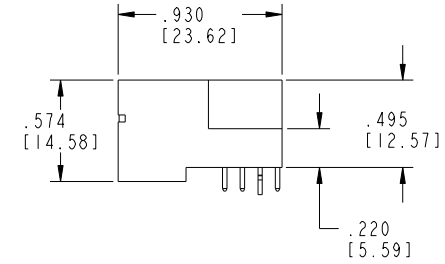
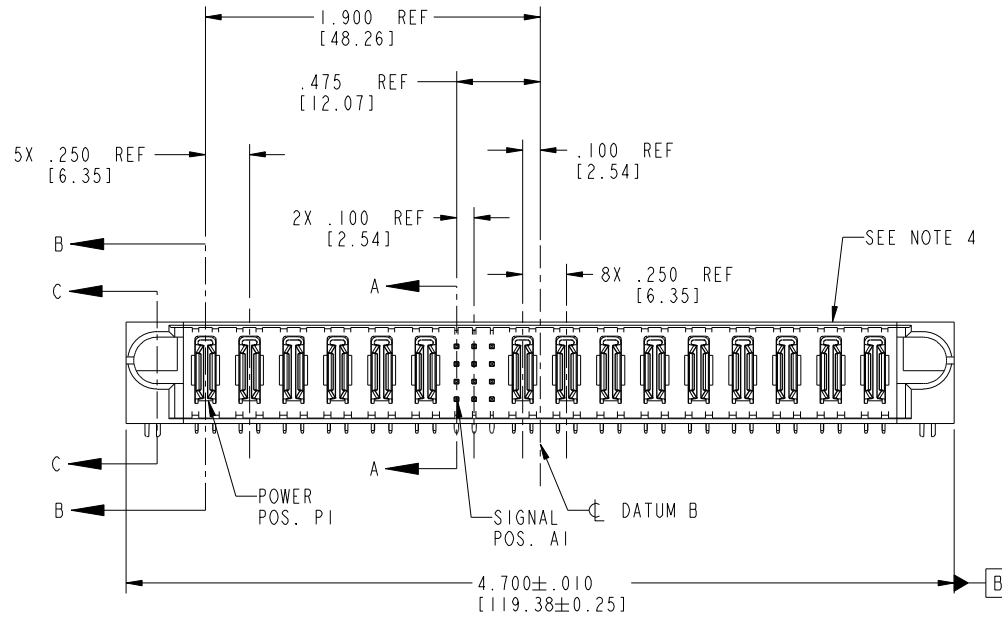


Tous droits strictement réservés. Reproduction ou communication à des tiers interdite sous quelque forme que ce soit sans autorisation écrite du propriétaire. Propriété de c.FCI. Droits de reproduction FCI.

All rights strictly reserved. Reproduction or issue to third parties in any form whatever is not permitted without written authority from the proprietor. Property of FCI. Copyright FCI.

PRODUCT NO.	ROWS	POWER					SGN			POWER					E2						
		E1	P1	P2	P3	P4	P5	P6	1	2	3	P7	P8	P9		P10	P11	P12	P13	P14	P15
51730-107 NOTE: ③	D C B A	HA	PA	PA	PA	PA	PA	PA	1	2	3	PA	PA	PA	PA	PA	PA	PA	PA	PA	HA



CODE	DIM "M" MATING LENGTH	CONTACT TYPE
U	.270 [6.86]	SIGNAL
T	.270 [6.86]	SIGNAL
S	.270 [6.86]	SIGNAL
R	.270 [6.86]	SIGNAL
PA	N/A [N/A]	POWER
HA	N/A [N/A]	HOLD-DOWN
E	.220 [5.59]	SIGNAL

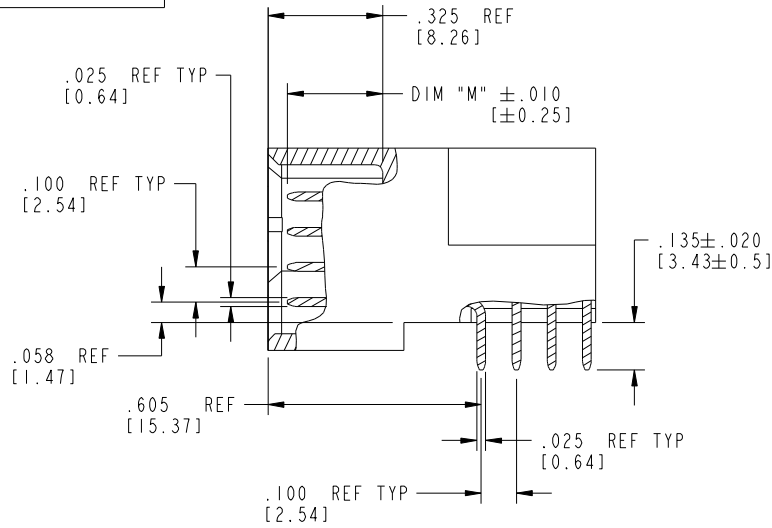
mat'l code				SEE NOTE 2		tolerances unless otherwise specified		CUSTOMER		
ltr	ecn no.	dr	date	linear	.XX±.01/0.X±0.3	projection	www.fciconnect.com			
A	DG04-0086	LH	11/24/04	angles	.XXX±.005/0.XX±0.13	INCH/MM	title 6P + 12S + 9P			
B	DG05-0227	SJ	07/15/05		.XXX±.002/0.XX±0.051	scale	RIGHT ANGLE SOLDER HEADER			
C	DG05-0463	CS	11/14/05		0°±2°	1:1	product family PwrBlade code 213			
D	DG08-0253	SH	09/13/08				size dwg no 51730-107 sheet 1 of 4			
sheet index		revision sheet		D	D	D	D	cage code 22526		
		1 2		3	4			4		

Pro/E

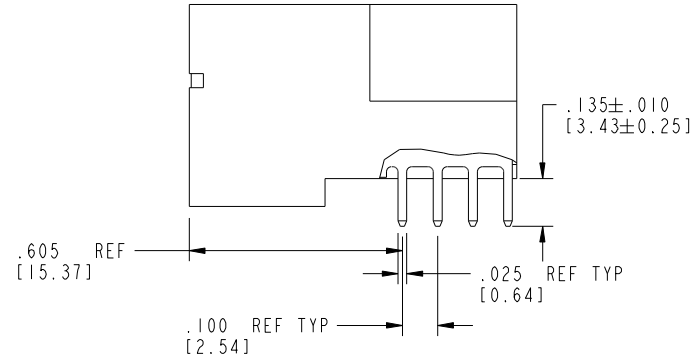
Tous droits strictement réservés. Reproduction ou communication à des tiers interdite sous quelque forme que ce soit sans autorisation écrite du propriétaire. Propriété de c FCI. Droits de reproduction FCI.

All rights strictly reserved. Reproduction or issue to third parties in any form whatever is not permitted without written authority from the proprietor. Property of FCI. Copyright FCI.

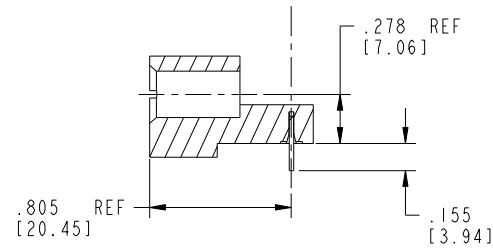
PRODUCT NUMBER  
51730-107--  
NOTE: ③



BROKEN-OUT SECTION A-A  
SCALE 2:1



BROKEN-OUT SECTION B-B  
SCALE 2:1



SECTION C-C

mat'l code				SEE NOTE 2		tolerances unless otherwise specified		CUSTOMER		FCI	
ltr	ecn no.	dr	date	linear	.XX±.01/0.X±0.3	projection	COPY		www.fciconnect.com		
D					.XXX±.005/0.XX±0.13	INCH/MM		title 6P + 12S + 9P			
				angles	.XXX±.0020/0.XXX±0.051	1:1		RIGHT ANGLE SOLDER HEADER			
				dr	0°±2°	scale		product family PwrBlade		code 213	
				enr	LH 11/24/04	A		size dwg no		sheet 2 of 4	
				chr	LH 11/24/04	A		51730-107			
				appd	VICTOR LIN 11/24/04						
					JOSEPH HSIA 11/24/04						
sheet index	revision sheet										

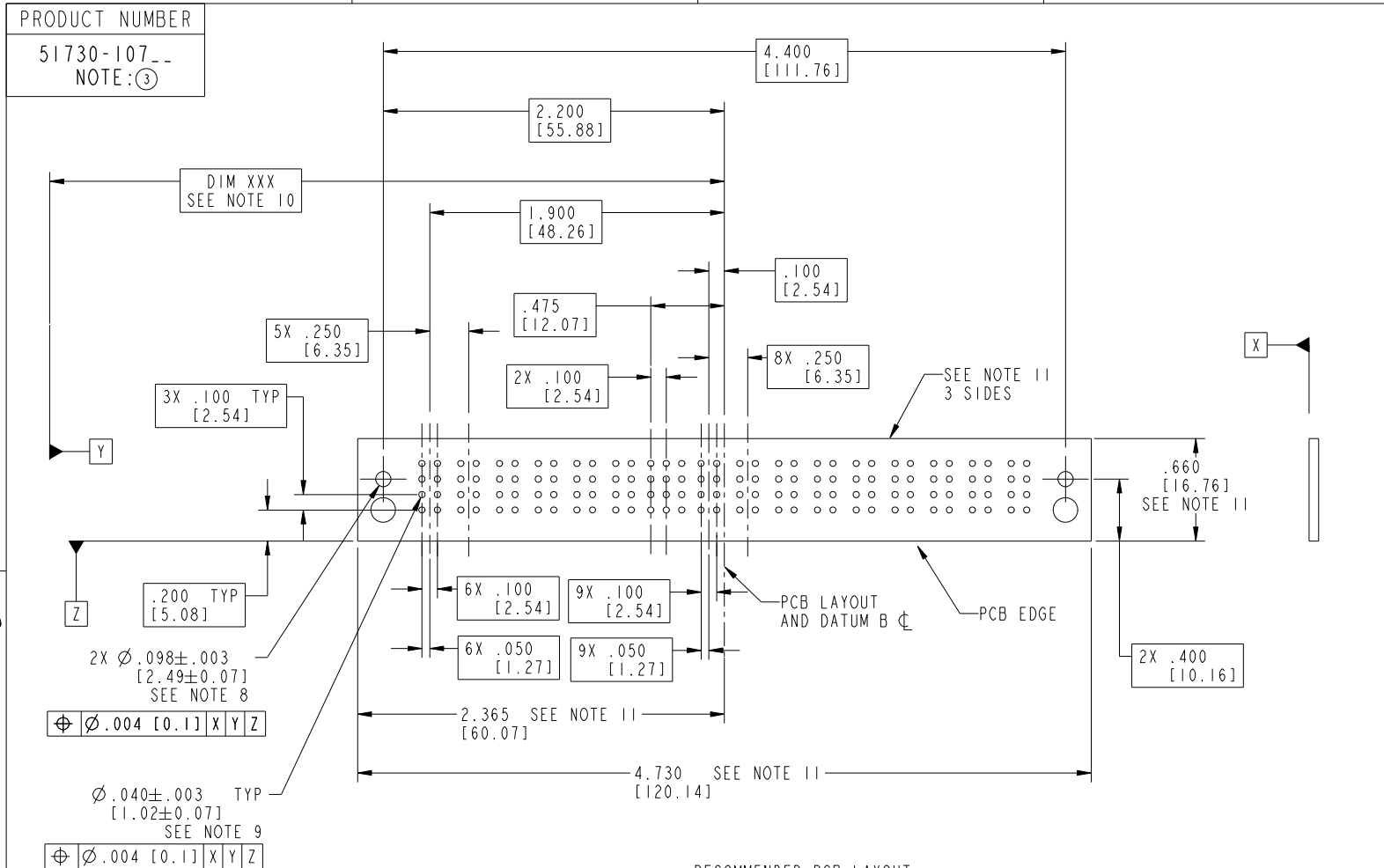
cage code 22526

Pro/E

Tous droits strictement réservés. Reproduction ou communication à des tiers interdite sous quelque forme que ce soit sans autorisation écrite du propriétaire. Propriété de c FCI. Droits de reproduction FCI.



All rights strictly reserved. Reproduction or issue to third parties in any form whatever is not permitted without written authority from the proprietor. Property of FCI. Copyright FCI.



RECOMMENDED PCB LAYOUT

mat'l code		SEE NOTE 2		tolerances unless otherwise specified		CUSTOMER		FCI		www.fciconnect.com	
ltr	ecr no.	dr	date	linear	.XX±.01/0.X±0.3	projection	COPY	title 6P + 12S + 9P			
D				angles	.XXX±.005/0.XX±0.13	INCH/MM		RIGHT ANGLE SOLDER HEADER			
				dr	.XXX±.0020/0.XXX±0.051	scale		product family PwrBlade		code 213	
				enr	0°±2°	1:1		size dwg no		sheet 3 of 4	
				chr	LH 11/24/04	A		51730-107			
				appd	LH 11/24/04						
					VICTOR LIN 11/24/04						
					JOSEPH HSIA 11/24/04						
sheet index	revision sheet							cage code 22526			

Pro/E

cage code 22526

Tous droits strictement réservés. Reproduction ou communication à des tiers interdite sous quelque forme que ce soit sans autorisation écrite du propriétaire. Propriété de c FCI. Droits de reproduction FCI.



All rights strictly reserved. Reproduction or issue to third parties in any form whatever is not permitted without written authority from the proprietor. Property of FCI. Copyright FCI.

PRODUCT NUMBER  
51730-107--  
NOTE: ③

NOTES:

1. DIMENSIONS AND TOLERANCES ARE IN ACCORDANCE WITH ASME Y14.5M, 1994 UNLESS OTHERWISE SPECIFIED.

CONNECTOR NOTES:

2. HOUSING MATERIAL: UL 94 V-0 GLASS FILLED HIGH-TEMP THERMOPLASTIC  
POWER CONTACT MATERIAL: COPPER ALLOY  
SIGNAL PIN MATERIAL: COPPER ALLOY

③ PLATING:  
△ SEE ITEM 1 & 2 IN PRINT 10064183 FOR PLATING SPEC OF 51730-107 AND 51730-107LF RESPECTIVELY

4. MANUFACTURER'S NAME, P/N, AND DATE CODE TO APPEAR ON THIS SURFACE.  
5. PRODUCT SPECIFICATION GS-12-149.  
APPLICATION SPECIFICATION BUS-20-067.

6. PACKAGED IN TRAYS.

PCB NOTES:

7. ALL HOLE DIAMETERS ARE FINISHED HOLE SIZE.  
8. MOUNTING HOLES, WHERE APPLICABLE, ARE UNPLATED.  
9.  $\varnothing .0453 \pm .0010$  [1.151  $\pm$  0.025] DRILLED HOLES PLATED WITH .0003 [0.008] MIN SnPb OVER .001 [0.03] TO .003 [0.08] Cu PLATING TO ACHIEVE  $\varnothing .040 \pm .003$  [1.02  $\pm$  .07] HOLE.  
10. "DIM XXX" TO BE DETERMINED BY THE CUSTOMER.  
11. CONNECTOR KEEP-OUT ZONE.  
12. A △ SYMBOL WILL BE NEXT TO ANY DIMENSION, VIEW, OR NOTE WHICH HAS BEEN MODIFIED WITH CURRENT DRAWING VERSION.

mat'l code		SEE NOTE 2		tolerances unless otherwise specified		CUSTOMER		FCI		www.fciconnect.com	
ltr	ecn no.	dr	date	linear	.XX±.01/0.X±0.3	COPY		projection			
D					.XXX±.005/0.XX±0.13	INCH/MM		title 6P + 12S + 9P			
				angles	.XXX±.002/0.XXX±0.051	1:1		RIGHT ANGLE SOLDER HEADER			
				dr	0°±2°	scale		product family PwrBlade		code 213	
				enr	LH 11/24/04	A		size dwg no		sheet 4 of 4	
				chr	LH 11/24/04	A		51730-107			
				appd	VICTOR LIN 11/24/04						
					JOSEPH HSIA 11/24/04						
sheet index	revision sheet										

cage code 22526

Pro/E