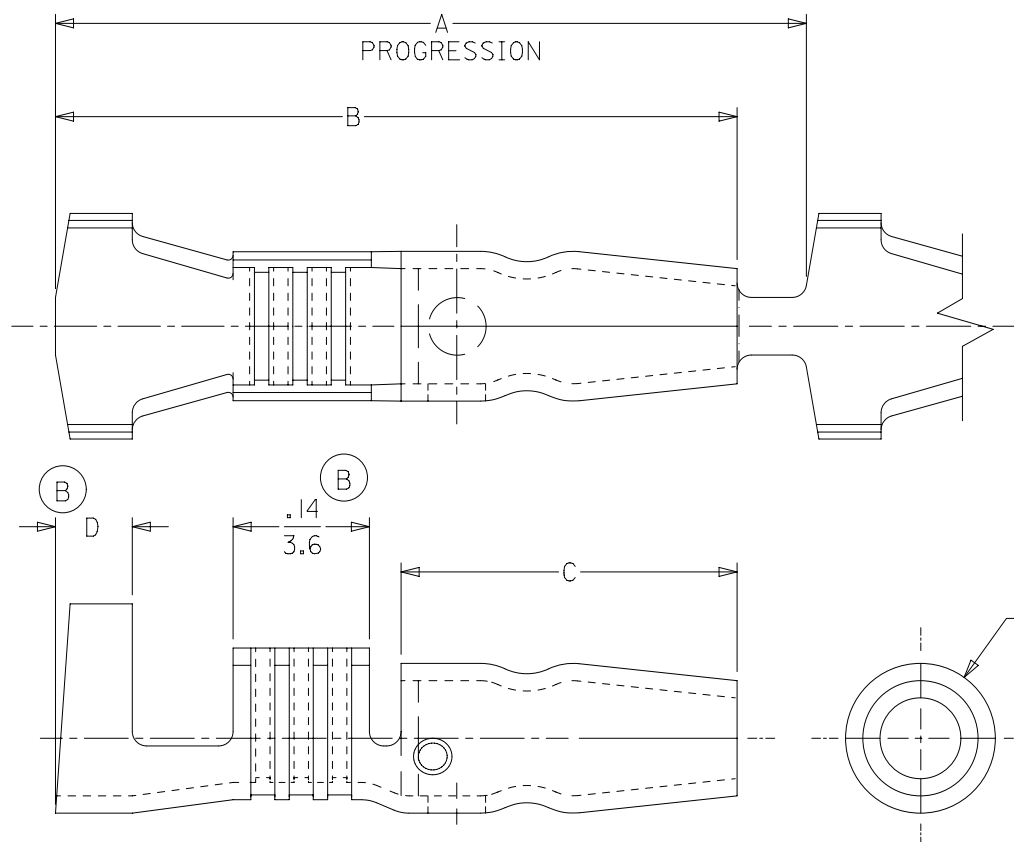


6	5	4	3	2	1			
MATERIAL NUMBER	ENG. NUMBER	DESCRIPTION	FITS RECEPT. DIAMETER.	A	B	C	D	E
197244102	19724-4102	PLATED	.156/(3.96)	.76/(19.3)	.71/(18.0)	.35/(8.9)	.08/(2.0)	.156/(3.96)
197244402	19724-4402	PLATED	.180/(4.57)	.83/(21.2)	.74/(18.8)	.44/(11.2)	.06/(1.5)	.180/(4.57)



SALES DRAWING

NOTE(S):
 1. MATERIAL: BRASS
 2. MATERIAL THICKNESS: .016/(0.41)
 3. PLATING: ELECTRO-TIN

THIS DRAWING CONTAINS INFORMATION THAT IS PROPRIETARY TO MOLEX ELECTRONIC TECHNOLOGIES, LLC AND SHOULD NOT BE USED WITHOUT WRITTEN PERMISSION										
DIMENSION UNITS IN/MM		SCALE 5:1		CURRENT REV DESC: OBSOLETE PART NO						
GENERAL TOLERANCES (UNLESS SPECIFIED)				EC NO: 628886		molex				
		MM	INCH	DRWN: VLOKESHA 2019/10/10						
4 PLACES		± 0.0	±	2019/10/10		VIBRAKRIMP SNAP PLUG 18-14 AWG, OPEN BARREL CHAIN STAMPED				
3 PLACES		±	± 0.005	2020/01/13		PRODUCT CUSTOMER DRAWING				
2 PLACES		± 0.13	± 0.01	2020/01/13		DOCUMENT NUMBER		DOC TYPE	DOC PART	REVISION
1 PLACE		± 0.25	±	2002/12/20		SD-19724-002		PSD	001	B1
0 PLACES		±	±	2002/12/20		MATERIAL NUMBER		CUSTOMER		SHEET NUMBER
ANGULAR TOL		± 0.5°		APPR: RWD		SEE CHART		GENERAL MARKET		1 OF 1
DRAFT WHERE APPLICABLE MUST REMAIN WITHIN DIMENSIONS				THIRD ANGLE PROJECTION		DRAWING		SERIES		
				A-SIZE		19724				

DOCUMENT STATUS	P1	RELEASE DATE	2020/01/13	05:55:47
-----------------	----	--------------	------------	----------