

# PRELIMINARY

## 2.45 GHz Band Pass Filter

**P/N 2450BP39C100D**

Detail Specification: 06/05/07

Page 1 of 2

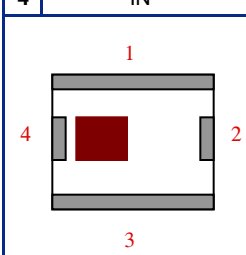
### General Specifications

<b>Part Number</b>	2450BP39C100D	
<b>Frequency (MHz)</b>	2400 - 2500	
<b>Insertion Loss</b>	2.2 dB max.	
<b>Return Loss</b>	9.5 dB min.	
<b>Attenuation (min.)</b>	880 ~ 915MHz	30 dB
<b>Attenuation (min.)</b>	1710 ~ 1785MHz	30 dB
<b>Attenuation (min.)</b>	1850 ~ 1910MHz	25 dB
<b>Attenuation (min.)</b>	2100MHz	25 dB
<b>Attenuation (min.)</b>	4800 ~ 5000MHz	25 dB
<b>Attenuation (min.)</b>	7200 ~ 7500MHz	15 dB

<b>Input Power</b>	500 mW max.
<b>Impedance</b>	50 $\Omega$
<b>Operating Temperature</b>	-40 to +85°C
<b>Storage Temperature</b>	-40 to +85°C
<b>Reel Quantity</b>	3,000
<b>MSL</b>	2

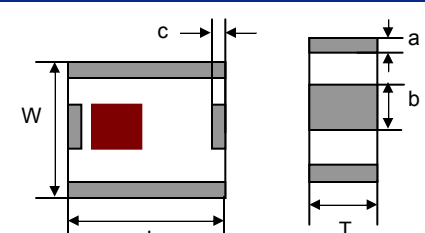
### Terminal Configuration

No.	Function
1	GND
2	OUT
3	GND
4	IN



### Mechanical Dimensions

	In	mm
<b>L</b>	0.098 ± 0.008	2.50 ± 0.20
<b>W</b>	0.079 ± 0.008	2.00 ± 0.20
<b>T</b>	0.035 ± 0.004	0.90 ± 0.10
<b>a</b>	0.012 ± 0.008	0.30 ± 0.20
<b>b</b>	0.024 ± 0.008	0.60 ± 0.20
<b>c</b>	0.012 ± 0.008	0.30 ± 0.20

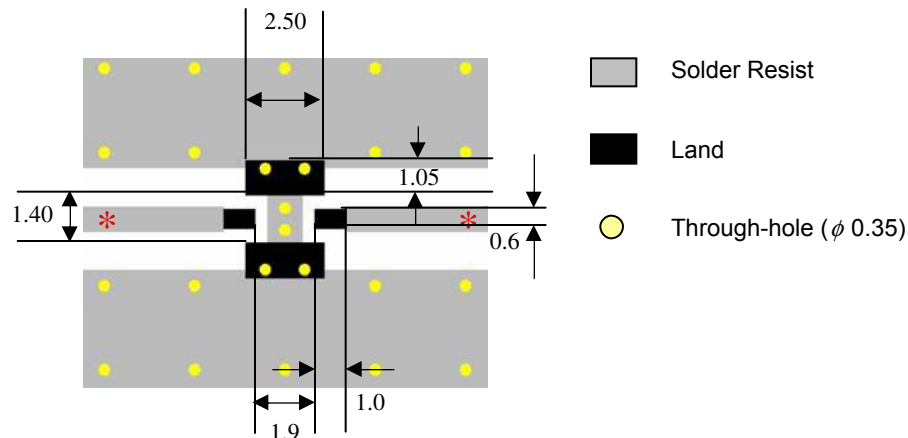


### Mounting Considerations

Mount these devices with brown mark facing up.

\* Line width should be designed to provide 50  $\Omega$  impedance matching characteristics.

Units: mm



Johanson Technology, Inc. reserves the right to make design changes without notice.

All sales are subject to Johanson Technology, Inc. terms and conditions.

# PRELIMINARY

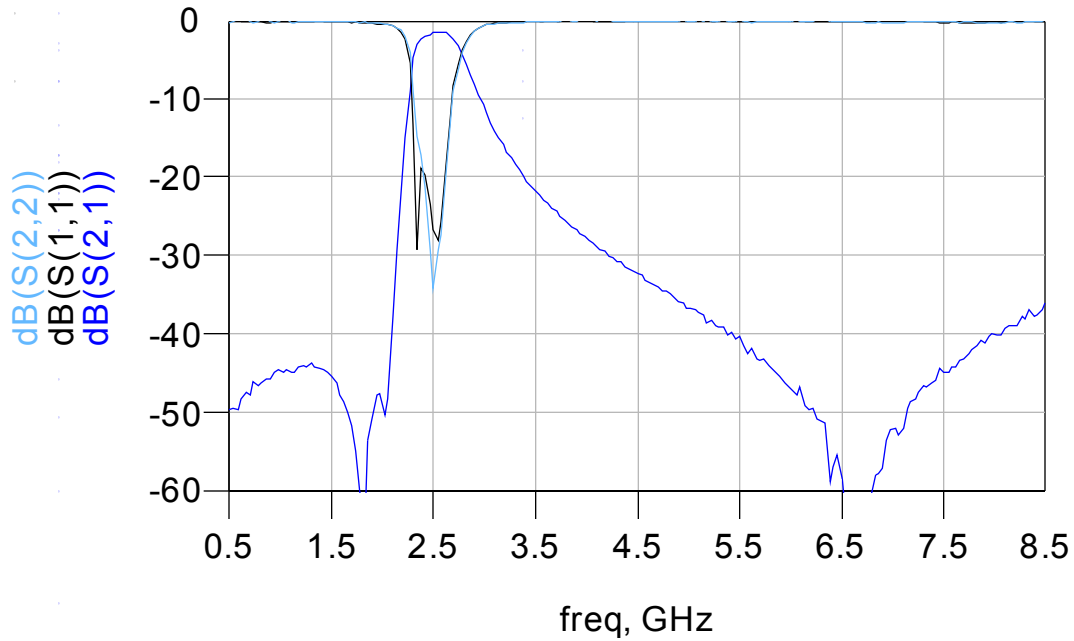
## 2.45 GHz Band Pass Filter

P/N 2450BP39C100D

Detail Specification: 06/05/07

Page 2 of 2

### Typical Electrical Performance (T=25°C)



Johanson Technology, Inc. reserves the right to make design changes without notice.

All sales are subject to Johanson Technology, Inc. terms and conditions.



[www.johansontechnology.com](http://www.johansontechnology.com)

4001 Calle Tecate • Camarillo, CA 93012 • TEL 805.389.1166 FAX 805.389.1821

2007 Johanson Technology, Inc. All Rights Reserved