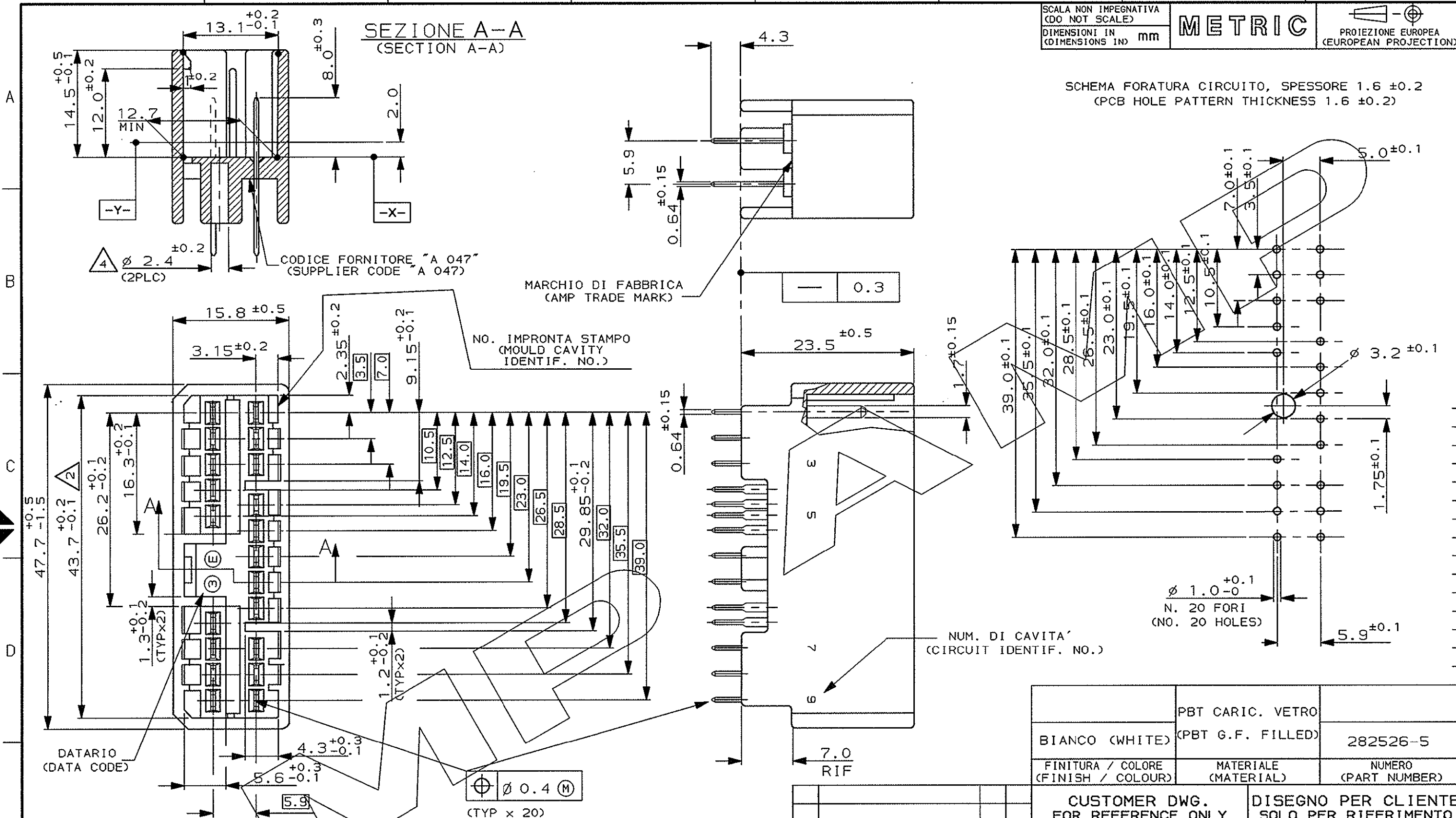


SEZIONE A-A
(SECTION A-A)

SCHEMA FORATURA CIRCUITO, SPESSORE 1.6 ± 0.2
 (PCB HOLE PATTERN THICKNESS 1.6 ± 0.2)



- 1) BLOCCHETTO ADATTO PER CONTROPARTI P/N 174952-1 E 282369-1 (20 VIE)
 (HOUSING SUITABLE FOR PLUG 20 POSITION P/N 174952-1 AND P/N 282369-1).
- 2) QUOTE MISURATE TRA I PIANI -X- E -Y-.
 (DIMENSIONS MUST BE KEEP BETWEEN -X- AND -Y-).
- 3) TAB IN OTTONE STAGNATO.
 (TAB: BRASS TIN PLATED).
- 4) FORO PER VITE AUTOFILETTANTE M3, DA APPLICARE PRIMA DELLA STAGNATURA AD ONDA.
 (HOLE FOR TAPPING SCREW M3, BEFORE SOLDER OPERATION)

| | | |
|-------------------------------------|------------------------------------|----------------------|
| BIANCO (WHITE) | PBT CARIC. VETRO (PBT G.F. FILLED) | 282526-5 |
| FINITURA / COLORE (FINISH / COLOUR) | MATERIALE (MATERIAL) | NUMERO (PART NUMBER) |

CUSTOMER DWG. FOR REFERENCE ONLY
 DISEGNO PER CLIENTE SOLO PER RIFERIMENTO

THIS DRAWING IS UNPUBLISHED
 RELEASE FOR PUBLICATION 19

© COPYRIGHT 19 BY AMP INCORPORATED, HARRISBURG, PA. ALL INTERNATIONAL RIGHT RESERVED. AMP PRODUCTS MAY BE COVERED BY U.S. AND FOREIGN PATENT AND/OR PATENT PENDING

| | | | |
|--|----------------------------------|-------------------------|---------------|
| TOLLERANZE, SE NON DIVERSAMENTE SPECIFICATO (TOLERANCES, UNLESS OTHERWISE SPECIFIED) | DIAM. ISOLANTE (INS. DIA. RANGE) | RANGO FILO (WIRE RANGE) | SCALA (SCALE) |
| ± 0.3 | | | 2:1 |

ANGOLI (ANGLES) ± 2°

AMP AMP ITALIA S.p.A.
 Corso F.lli Cervi, 15
 COLLEGNO (TORINO)

| | | | | | | | | |
|------------------|-------------------------------|-----------------------|-------------|-------------|-------------|------------------|-------------|----------------|
| REV. (REV. LTR.) | REVISIONI (REVISION RECORD) | DIS. DATA (DR) (DATE) | APP. (APP.) | LOC. (LOC.) | SIZE (SIZE) | NUMERO (DWG NO.) | REV. (REV.) | FOGLIO (SHEET) |
| C | REVISED FOR ET00-0025-04 | M.P. 23-1/04 | | I | A3 | C-282526 | C | 1 DI (OF) 4 |
| A2 | REVISED FOR ET00-0352-97 | M.P. 29-7/97 | | | | | | |
| A1 | RELEASED WITH ET00-0072-97 | M.P. 27-2/97 | | | | | | |
| A | FIRST ISSUE WITH ET00-0273-96 | M.P. 7-6/96 | | | | | | |

DISTRIBUZIONE (PRINT DIST.)

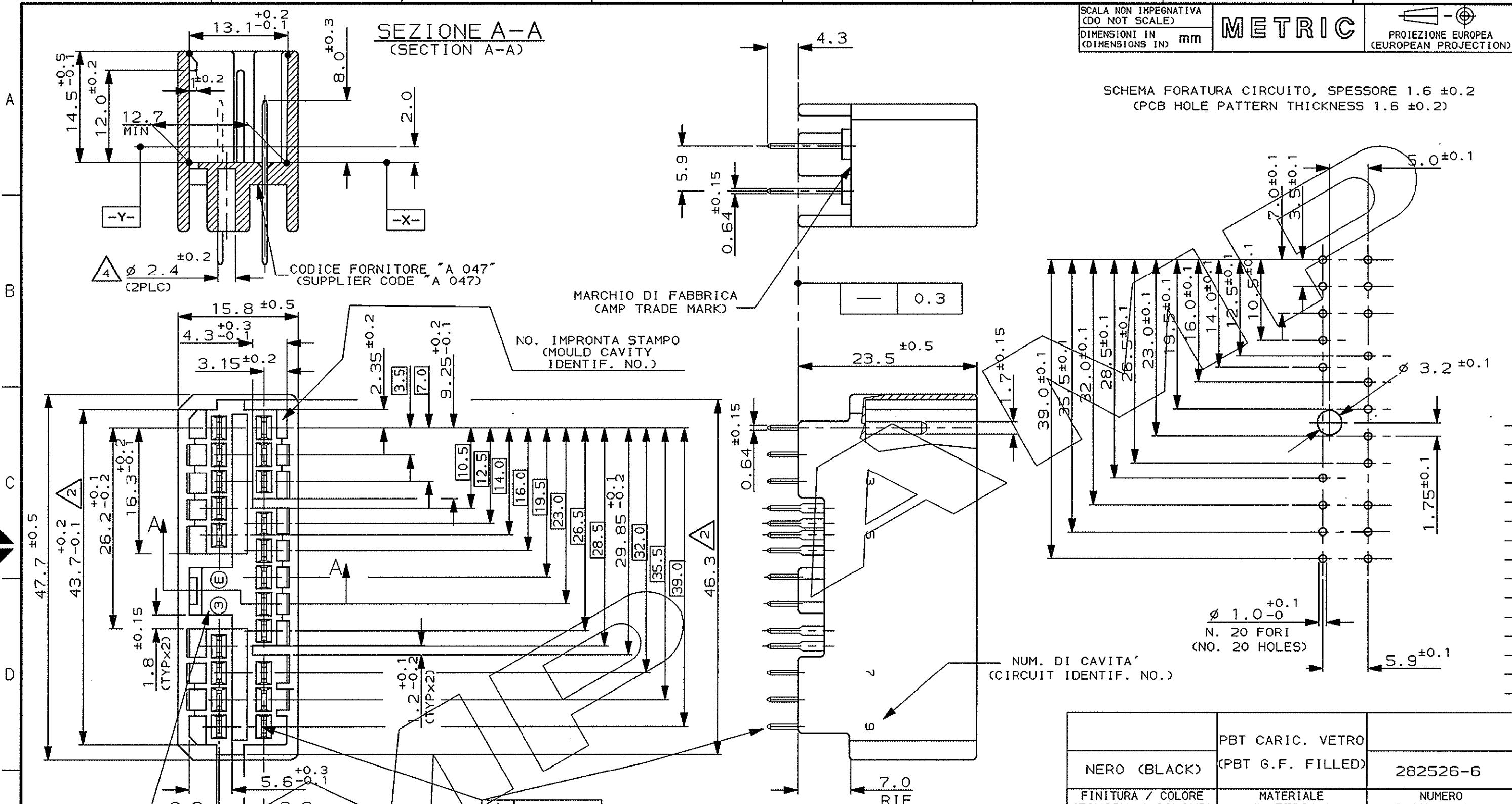
SCALA NON IMPEGNATIVA
(DO NOT SCALE)
DIMENSIONI IN mm
(DIMENSIONS IN mm)

METRIC

PROIEZIONE EUROPEA
(EUROPEAN PROJECTION)

SEZIONE A-A
(SECTION A-A)

SCHEMA FORATURA CIRCUITO, SPESORE 1.6 ± 0.2
(PCB HOLE PATTERN THICKNESS 1.6 ± 0.2)



MARCHIO DI FABBRICA
(CAMP TRADE MARK)

NO. IMPRONTA STAMPO
(MOULD CAVITY IDENTIF. NO.)

NUM. DI CAVITA'
(CIRCUIT IDENTIF. NO.)

DATARIO
(DATA CODE)

⊕ ∅ 0.4 (M)
(TYP x 20)

| | | |
|--|---------------------------------------|-------------------------|
| NERO (BLACK) | PBT CARIC. VETRO (PBT G.F. FILLED) | 282526-6 |
| FINITURA / COLORE (FINISH / COLOUR) | MATERIALE (MATERIAL) | NUMERO (PART NUMBER) |

CUSTOMER DWG. FOR REFERENCE ONLY
DISEGNO PER CLIENTE SOLO PER RIFERIMENTO

THIS DRAWING IS UNPUBLISHED RELEASE FOR PUBLICATION 19

© COPYRIGHT 19 BY AMP INCORPORATED, HARRISBURG, PA. ALL INTERNATIONAL RIGHT RESERVED. AMP PRODUCTS MAY BE COVERED BY U.S. AND FOREIGN PATENT AND/OR PATENT PENDING

| | | | |
|---|-------------------------------------|----------------------------|------------------|
| TOLLERANZE, SE NON DIVERSAMENTE SPECIFICATO (TOLERANCES, UNLESS OTHERWISE SPECIFIED) | DIAM. ISOLANTE (INS. DIA. RANGE) | RANGO FILO (WIRE RANGE) | SCALA (SCALE) |
| ± 0.3 | | | 2:1 |

ANGOLI (ANGLES) ± 2°

DIS. (DR.)
CONT. (CHK.)
DESCRIZIONE (DESCRIPTION) 070 Sr. MULTILOCK* Conn. CAP HOUSING ASS'Y 20 POSITION VERTICAL TYPE

| | | | | | | | | |
|-------------|-----------------------------|----------------------|-------------|-------------|-------------|-----------------|-------------|---------------|
| REV. (REV.) | REVISIONI (REVISION RECORD) | DIS. DATA (DR. DATE) | APP. (APP.) | LOC. (LOC.) | SIZE (SIZE) | NUMERO (DWG NO) | REV. (REV.) | FOLIO (SHEET) |
| | | | | I | A3 | C-282526 | C | 2 OF 4 |

| |
|----------------------|
| VEDERE FOGLIO 1 DI 4 |
|----------------------|

1) BLOCCHETTO ADATTO PER CONTROPARTE P/N 282369-2 (20 VIE)
(HOUSING SUITABLE FOR PLUG 20 POSITION P/N 282369-2).

2) QUOTE MISURATE TRA PIANI -X- E -Y-.
(DIMENSIONS MUST BE KEEP BETWEEN -X- AND -Y-).

3) TAB IN OTTONE STAGNATO.
(TAB: BRASS TIN PLATED).

4) FORO PER VITE AUTOFILETTANTE M3, DA APPLICARE PRIMA DELLA STAGNATURA AD ONDA.
(HOLE FOR TAPPING SCREW M3, BEFORE SOLDER OPERATION)

DISTRIBUZIONE (PRINT DIST.)

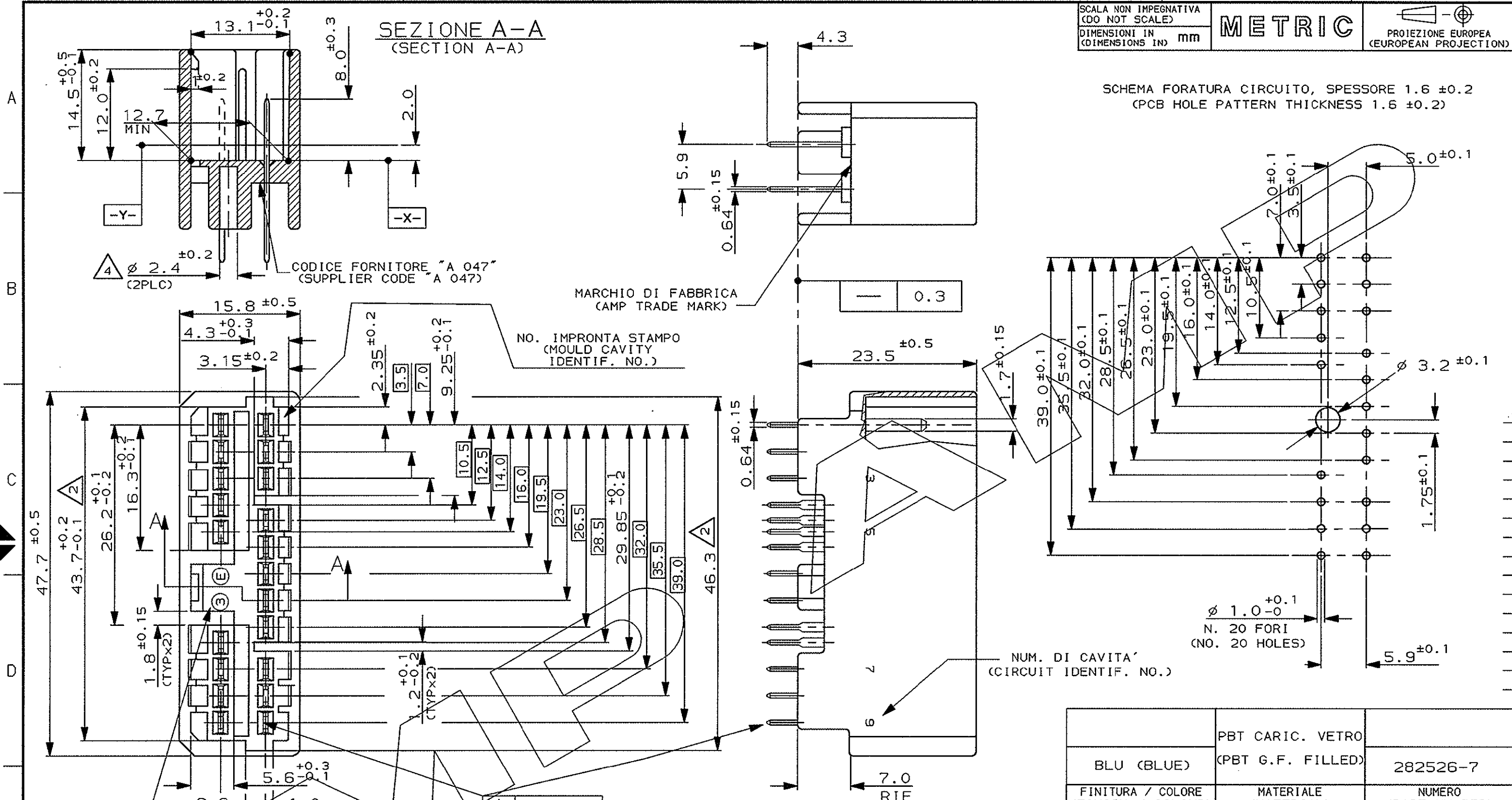
SCALA NON IMPEGNATIVA
(DO NOT SCALE)
DIMENSIONI IN mm
(DIMENSIONS IN IN)

METRIC

PROIEZIONE EUROPEA
(EUROPEAN PROJECTION)

SEZIONE A-A
(SECTION A-A)

SCHEMA FORATURA CIRCUITO, SPESSORE 1.6 ± 0.2
(PCB HOLE PATTERN THICKNESS 1.6 ± 0.2)



MARCHIO DI FABBRICA
(CAMP TRADE MARK)

NO. IMPRONTA STAMPO
(MOULD CAVITY IDENTIF. NO.)

NUM. DI CAVITA' (CIRCUIT IDENTIF. NO.)

Ø 1.0 ± 0.1
N. 20 FORI
(NO. 20 HOLES)

| | | |
|--|---------------------------------------|-------------------------|
| BLU (BLUE) | PBT CARIC. VETRO (PBT G.F. FILLED) | 282526-7 |
| FINITURA / COLORE (FINISH / COLOUR) | MATERIALE (MATERIAL) | NUMERO (PART NUMBER) |

CUSTOMER DWG. FOR REFERENCE ONLY DISEGNO PER CLIENTE SOLO PER RIFERIMENTO

THIS DRAWING IS UNPUBLISHED RELEASE FOR PUBLICATION 19

© COPYRIGHT 19 BY AMP INCORPORATED, HARRISBURG, PA. ALL INTERNATIONAL RIGHT RESERVED. AMP PRODUCTS MAY BE COVERED BY U.S. AND FOREIGN PATENT AND/OR PATENT PENDING

| | | | |
|---|-------------------------------------|----------------------------|------------------|
| TOLLERANZE, SE NON DIVERSAMENTE SPECIFICATO (TOLERANCES, UNLESS OTHERWISE SPECIFIED) | DIAM. ISOLANTE (INS. DIA. RANGE) | RANGO FILO (WIRE RANGE) | SCALA (SCALE) |
| ± 0.3 | | | 2:1 |

ANGOLI (ANGLES) ± 2°

DIS. (DR.)
CONT. (CHK.)
DESCRIZIONE (DESCRIPTION) 070 Sr. MULTILOCK* Conn. CAP HOUSING ASS'Y 20 POSITION VERTICAL TYPE

| | | | | | | | | |
|-------------|-----------------------------|----------------------|-------------|-------------|-------------|------------------|-------------|-----------------|
| REV. (REV.) | REVISIONI (REVISION RECORD) | DIS. DATA (DR. DATE) | APP. (APP.) | LOC. (LOC.) | SIZE (SIZE) | NUMERO (DWG NO.) | REV. (REV.) | FOLGIO (SHEET) |
| | | | | I A3 | | C-282526 | C | 3 DI 4 (3 OF 4) |

| |
|----------------------|
| VEDERE FOGLIO 1 DI 4 |
|----------------------|

DATARIO (DATA CODE)

Ø 0.4 (M)
(TYP x 20)

1) BLOCCHETTO ADATTO PER CONTROPARTE P/N 282369-2 (20 VIE)
(HOUSING SUITABLE FOR PLUG 20 POSITION P/N 282369-2).

2) QUOTE MISURATE TRA PIANI -X- E -Y-.
(DIMENSIONS MUST BE KEEP BETWEEN -X- AND -Y-).

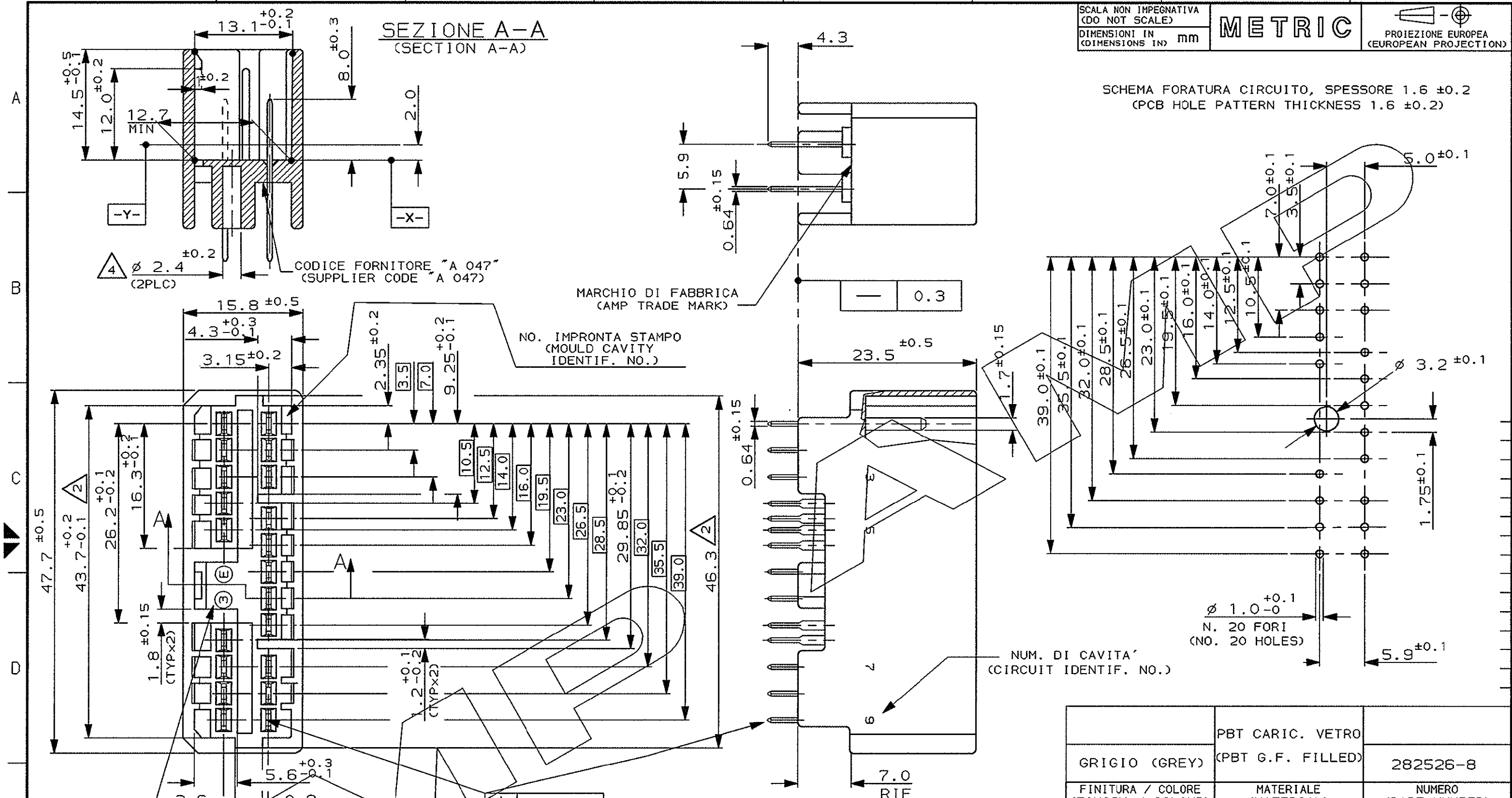
3) TAB IN OTTONE STAGNATO.
(TAB: BRASS TIN PLATED).

4) FORO PER VITE AUTOFILETTANTE M3, DA APPLICARE PRIMA DELLA STAGNATURA AD ONDA.
(HOLE FOR TAPPING SCREW M3, BEFORE SOLDER OPERATION)

DISTRIBUZIONE (PRINT DIST.)

SEZIONE A-A
 (SECTION A-A)

SCHEMA FORATURA CIRCUITO, SPESSORE 1.6 ± 0.2
 (PCB HOLE PATTERN THICKNESS 1.6 ± 0.2)



| | | |
|--|---------------------------------------|-------------------------|
| | PBT CARIC. VETRO (PBT G.F. FILLED) | |
| GRIGIO (GREY) | | 282526-8 |
| FINITURA / COLORE (FINISH / COLOUR) | MATERIALE (MATERIAL) | NUMERO (PART NUMBER) |

CUSTOMER DWG. FOR REFERENCE ONLY
 DISEGNO PER CLIENTE SOLO PER RIFERIMENTO

THIS DRAWING IS UNPUBLISHED
 RELEASE FOR PUBLICATION 19

© COPYRIGHT 19 BY AMP INCORPORATED, HARRISBURG, PA. ALL INTERNATIONAL RIGHT RESERVED. AMP PRODUCTS MAY BE COVERED BY U.S. AND FOREIGN PATENT AND/OR PATENT PENDING

| | | | |
|---|-------------------------------------|----------------------------|------------------|
| TOLLERANZE: SE NON DIVERSAMENTE SPECIFICATO (TOLERANCES: UNLESS OTHERWISE SPECIFIED) | DIAM. ISOLANTE (INS. DIA. RANGE) | RANGO FILO (WIRE RANGE) | SCALA (SCALE) |
| ± 0.3 | | | 2:1 |

ANGOLI (ANGLES) ± 2°

AMP AMP ITALIA S.p.A.
 Corso F.lli Cervi, 15
 COLLEGO (TORINO)

DESCRIZIONE (DESCRIPTION) 070 Sr. MULTILOCK* Conn. CAP HOUSING ASS'Y 20 POSITION VERTICAL TYPE

| | | | | |
|--------|---------|--------------------------|--------|-----------------------------|
| LOC. I | SIZE A3 | NUMERO (DWG NO) C-282526 | REV. C | FUOGLIO (SHEET) 4 DI (OF) 4 |
|--------|---------|--------------------------|--------|-----------------------------|

DATARIO (DATA CODE)

- BLOCCHETTO ADATTO PER CONTROPARTE P/N 282369-2 (20 VIE)
 (HOUSING SUITABLE FOR PLUG 20 POSITION P/N 282369-2).
- QUOTE MISURATE TRA I PIANI -X- E -Y-.
 (DIMENSIONS MUST BE KEEP BETWEEN -X- AND -Y-).
- TAB IN OTTONE STAGNATO.
 (TAB: BRASS TIN PLATED).
- FORO PER VITE AUTOFILETTANTE M3, DA APPLICARE PRIMA DELLA STAGNATURA AD ONDA.
 (HOLE FOR TAPPING SCREW M3, BEFORE SOLDER OPERATION)

DISTRIBUZIONE (PRINT DIST.)