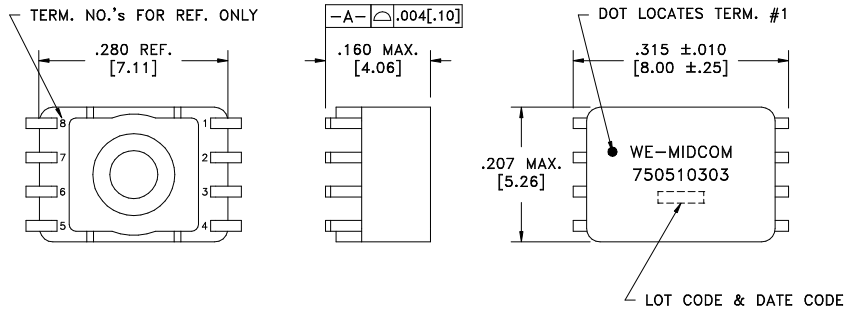


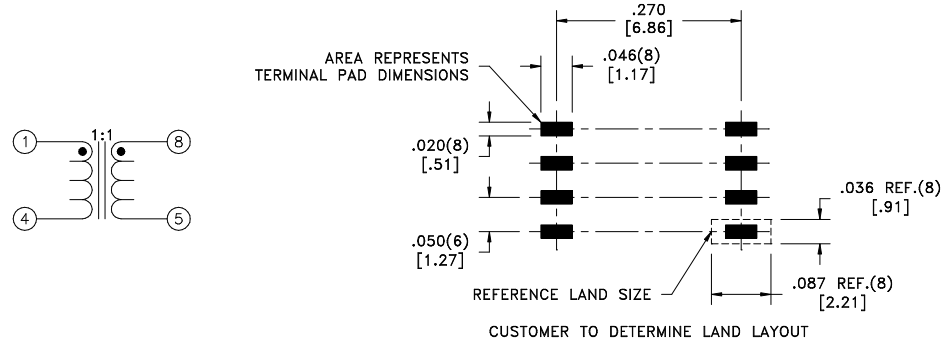
|                   |      |               |
|-------------------|------|---------------|
| CUSTOMER TERMINAL | RoHS | LEAD(Pb)-FREE |
| Sn96%, Ag4%       | Yes  | Yes           |

more than you expect



**ELECTRICAL SPECIFICATIONS @ 25°C unless otherwise noted:**

| PARAMETER               | TEST CONDITIONS         | VALUE            |
|-------------------------|-------------------------|------------------|
| D.C. RESISTANCE         | 1-4 @20°C               | 0.35 ohms max.   |
| D.C. RESISTANCE         | 8-5 @20°C               | 0.35 ohms max.   |
| INDUCTANCE              | 1-4 100kHz, 100mVAC, Ls | 20uH min.        |
| DIELECTRIC              | 1-8 600VAC, 1 second    | 500VAC, 1 minute |
| TURNS RATIO             | (1-4):(8-5)             | 1:1, ±1%         |
| COMMON MODE ATTENUATION | 1MHz                    | -50dB typ.       |
| COMMON MODE ATTENUATION | 10MHz                   | -30dB typ.       |
| COMMON MODE ATTENUATION | 125MHz                  | -15dB typ.       |



**GENERAL SPECIFICATIONS:**  
 OPERATING TEMPERATURE RANGE: -40°C to +85°C.

DETAILS SUBJECT TO CHANGE

|      |      |                                                                                                    |  |                                                                                                                                  |                                            |                              |
|------|------|----------------------------------------------------------------------------------------------------|--|----------------------------------------------------------------------------------------------------------------------------------|--------------------------------------------|------------------------------|
| REV. | DATE | Packaging Specifications<br>Method: <b>Tape &amp; Reel</b><br>PKG-0510<br>www.we-online.com/midcom |  | Tolerances unless otherwise specified:<br>Angles: ±1°      Decimals: ±.005 [.13]<br>Fractions: ±1/64      Footprint: ±.005 [.13] | DRAWING TITLE<br><b>INDUCTOR<br/>CHOKE</b> | PART NO.<br><b>750510303</b> |
| 6A   | 4/11 | SEE REVISION SHEET FOR REVISION LEVEL                                                              |  | This drawing is dual dimensioned. Dimensions in brackets are in millimeters.                                                     | eiSos p/n: 750510303                       | SPECIFICATION SHEET 1 OF 1   |